



NORTHERN VIETNAM

HOTELS



TABLE OF CONTENTS



auroratravel.asia



HANOI ACCOMMODATIONS

HALONG CRUISES

NINH BINH ACCOMMODATIONS



HANOI ACCOMMODATIONS



auroratravel.asia



THE GREAT STARTING POINT FOR YOUR VIETNAM EXPERIENCE



The Locals Know Best



Hanoi Accommodations



SOFITEL LEGEND METROPOLE HOTEL 5* LUXURY

OVERVIEW

Nestled in the heart of Hanoi's historic Old Quarter, Sofitel Legend Metropole Hanoi has been a symbol of 5-star luxury since 1901. Blending French colonial elegance with Vietnamese charm, this legendary hotel offers 364 exquisite rooms across the historic Heritage Wing and modern Opera Wing. Just steps from Hoan Kiem Lake and the Hanoi Opera House, the hotel enchants guests with its lush courtyard, award-winning spa, and world-class dining experiences. A haven of history, sophistication, and timeless elegance, it remains Hanoi's most cherished retreat.

LOCATION

15 Ngo Quyen Street, Hoan Kiem District, Hanoi, Vietnam

CAPACITY: 364 ROOMS

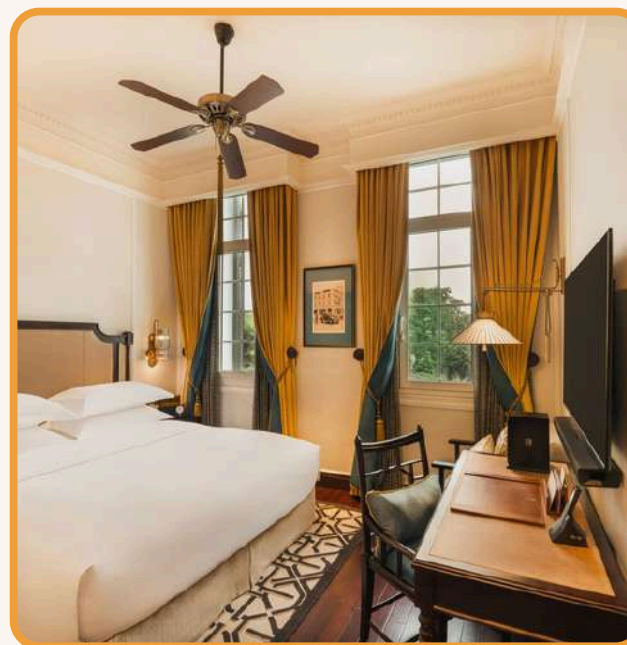
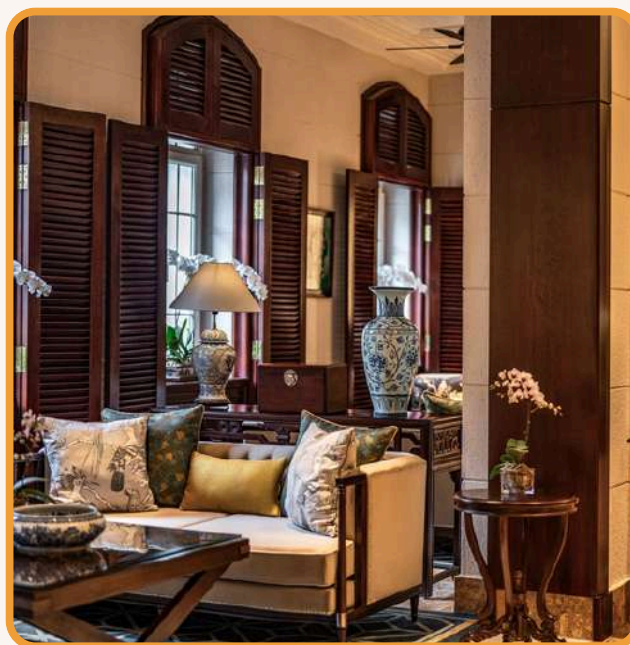
Heritage Wing – Timeless Elegance (106 Rooms)

- Luxury Rooms – 32m² | 50 units
- Grand Luxury Rooms – 37m² | 30 units
- Metropole Suites – 69m² | 10 units
- Legendary Suites – 70m² | 6 units

Opera Wing – Contemporary Sophistication (258 Rooms)

- Premium Rooms – 32m² | 120 units
- Grand Premium Rooms – 48m² | 80 units
- Prestige Suites – 64m² | 40 units
- Grand Prestige Suites – 176m² | 18 units

Hanoi Accommodations



SOFITEL LEGEND METROPOLE HOTEL 5* LUXURY

F&B OUTLETS

- Le Beaulieu Restaurant – French cuisine, open for lunch & dinner | 80 seats
- Le Club Bar – All-day dining with American, French, Vietnamese, and international cuisine | 100 seats
- Angelina Restaurant – International cuisine, open for lunch & dinner | 60 seats
- Spice Garden Restaurant – À la carte & Chef's Tasting Menu, open for lunch & dinner | 80 seats

MEETING & EVENT

Sofitel Legend Metropole Hanoi offers sophisticated venues for meetings and events, equipped with modern amenities and a refined ambiance:

- Thang Long Room – 185m² | Theater style: 150 seats
- The Veranda Room – 184m² | Theater style: 70 seats
- Dong Do Room – 48m² | Theater style: 32 seats



Hanoi Accommodations



JW MARRIOTT 5* LUXURY

OVERVIEW

Perched gracefully above Hanoi's dynamic Central Business District and conveniently located next to the Vietnam National Convention Center, JW Marriott Hotel Hanoi stands as a 5-star luxury accommodation. Showcasing contemporary design, it delivers world-class services, complemented by wonderful green outdoor spaces, a diverse array of dining and meeting venues, and spacious, stylish rooms designed for ultimate comfort.

LOCATION

No. 8 Do Duc Duc Road, Me Tri, Nam Tu Liem, Ha Noi

CAPACITY: 450 ROOMS

- 2 Accessible Lake King
- 293 Deluxe Rooms: 48 sq.m
- 92 Executive Rooms: 48 sq.m
- 7 Balcony Rooms: 48 sq.m
- 20 Deluxe Suites: 65 sq.m
- 24 Executive Suites: 90 sq.m
- 2 Balcony Suites: 90 sq.m
- 1 Family Suite: 110 sq.m
- 6 Grand Suites: 120 sq.m (R 682, R 592, R 590, R 296, R 247), 150 sq.m (R 602)
- 2 Chairman Suite: 250 sq.m (R 399, R 601)
- 1 Presidential Suite: 320 sq.m (R 501)
- 18 Connecting Rooms

Hanoi Accommodations



JW MARIOT 5* LUXURY

F&B OUTLETS

- Kumihimo: Modern Japanese dining & bar, dinner only.
- JW Café: All-day international cuisine with lakeside views.
- John Anthony: Cantonese grill & dim sum, lunch & dinner.
- French Grill: Fine French dining by Jean-François Nulli, dinner only.

MEETING & EVENT

17 Meeting Rooms

2 Grand Ballrooms:

- Grand Ballroom: 1,000m², accommodates 700 guests (banquet style).
- Fansipan Ballroom: 480m², accommodates 300 guests (banquet style).
- The Studio: 6 boardrooms surrounding a stylish social lounge



Hanoi Accommodations



INTERCONTINENTAL WESTLAKE 5* LUXURY

OVERVIEW

Nestled on the serene waters of West Lake, InterContinental Hanoi Westlake offers a luxurious escape beside the 800-year-old Golden Lotus Pagoda. Just minutes from the Old Quarter, the hotel features 293 elegantly designed rooms and suites, many set in overwater pavilions. Each boasts rich wooden flooring, Vietnamese furnishings, and private balconies with stunning views of West Lake, the pool, or Hanoi's skyline.

LOCATION

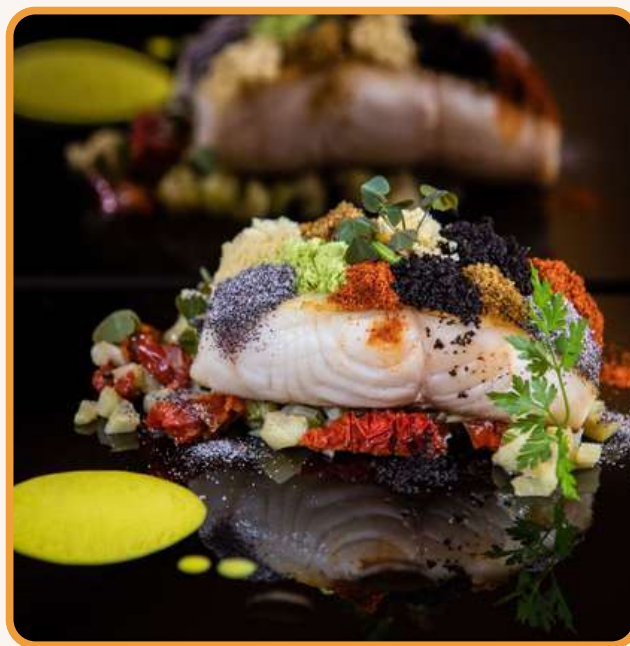
5 Tu Hoa Street, Tay Ho District, Hanoi

CAPACITY: 293 ROOMS

- Classic City view: 68 units
- Classic overwater City view: 88 units
- Classic Lake view: 20 units
- Classic overwater Lake view: 40 units
- Classic Club Assess Lake View: 15 units
- Classic Junior Suite Club Access City view: 11 units
- Classic Junior Suite Club Access Lake view: 7 units



Hanoi Accommodations



INTERCONTINENTAL WESTLAKE 5* LUXURY

F&B OUTLETS

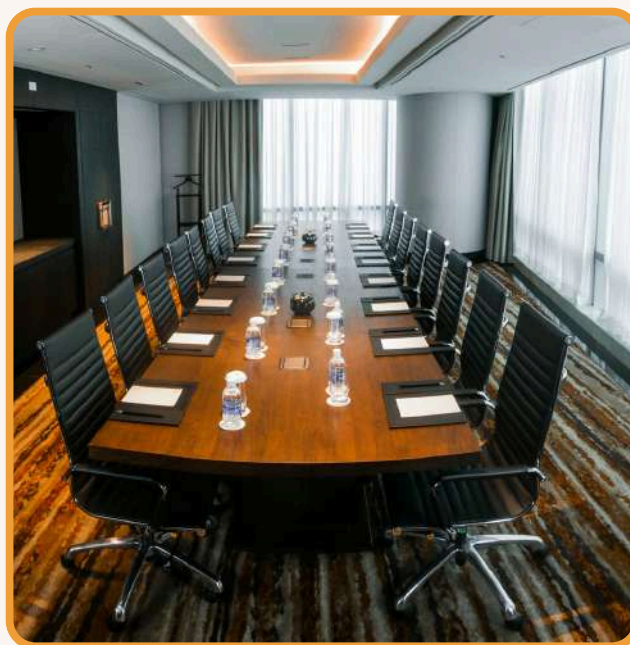
- Café Du Lac – Scenic lakeside, all-day dining
- Saigon Restaurant – Authentic Vietnamese cuisine | 120 guests
- Milan Restaurant – Elegant Western dining | 120 guests
- Milan & Saigon – Combined Western & Vietnamese | 240 guests
- Sunset Bar – Lakeside cocktails & group dining | 100 guests

MEETING & EVENT

- Grand Ballroom – Banquet setup | Capacity: 25 guests
- Ballroom 1, 2, 3 (with stage) – Banquet setup | Capacity: 240 guest



Hanoi Accommodations



LOTTE HOTEL 5* LUXURY

OVERVIEW

Perched atop one of Hanoi's tallest skyscrapers, Lotte Hotel Hanoi epitomizes luxury with its elegant design, world-class amenities, and exceptional hospitality. Situated within the iconic Lotte Center, the hotel boasts breathtaking panoramic views of the city's dynamic skyline. Its crown jewel is the stunning rooftop bar, offering an exclusive vantage point where guests can savor 360-degree views of Hanoi's mesmerizing cityscape.

LOCATION

59 Lieu Giai, Ba Dinh District, Ha Noi, Viet Nam

CAPACITY: 318 ROOMS

- Deluxe Rooms (42m²): 221 units
- Club Deluxe (42m²): 14 units
- Club Junior Suite (61m²): 73 units
- Deluxe suite (99m²): 06 units



Hanoi Accommodations



LOTTE HOTEL 5* LUXURY

F&B OUTLETS

- **Top of Hanoi** – One of Vietnam's top 7 rooftop bars, offering breathtaking 360-degree panoramic views of Hanoi's skyline through its stunning glass walls. | Capacity: 124 seats
- **Grill 63** – A refined fine-dining grill restaurant on the 63rd floor, serving exquisite dishes throughout the day. | Capacity: 122 seats
- **Red River** – A distinguished Chinese restaurant, perfect for an authentic dining experience with lunch and dinner service. | Capacity: 104 seats
- **Tim Ho Wan** – The renowned Michelin-starred dim sum house from Hong Kong, now in Hanoi, offering freshly made, delectable dim sum in a casual setting for lunch and dinner. | Capacity: 104 seats

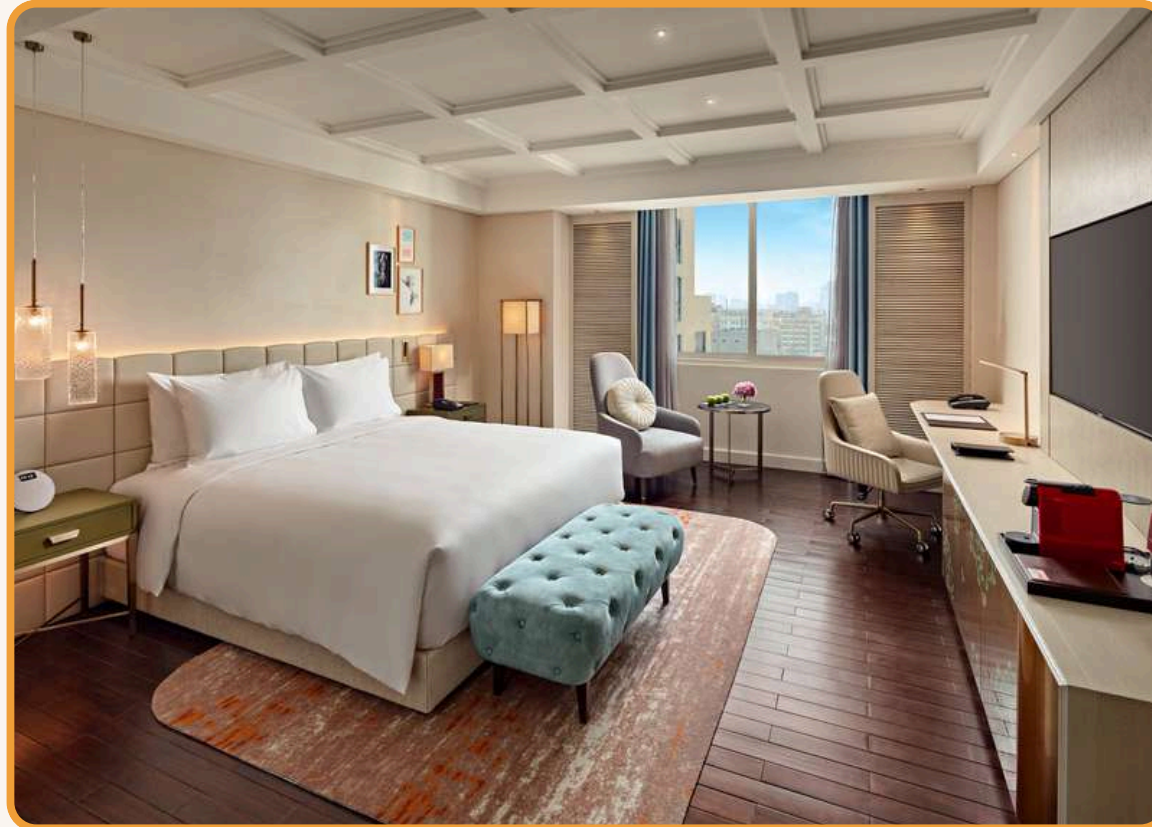
MEETING & EVENT

14 stylish function rooms with state-of-the-art sound and lighting systems.

- **Crystal Grand Ballroom:** 800m2| Capacity 600 pax, banquet-style
- **Emerald Room:** 304m2| Capacity 150 pax, banquet-style
- **Charlotte Room:** 140m2| Capacity 80 pax, banquet-style



Hanoi Accommodations



MÖVENPICK HOTEL HANOI CENTRE 5* LUXURY

OVERVIEW

Experience 5-star luxury in the heart of Hanoi, where French-style architecture blends seamlessly with Vietnamese charm. Designed for both business and leisure travelers, Mövenpick Hotel Hanoi Centre offers 155 stylish, non-smoking rooms and suites, featuring plush beds, eco-friendly amenities, smart TVs, free Wi-Fi, and exclusive comforts like espresso machines and a personalized pillow menu.

LOCATION

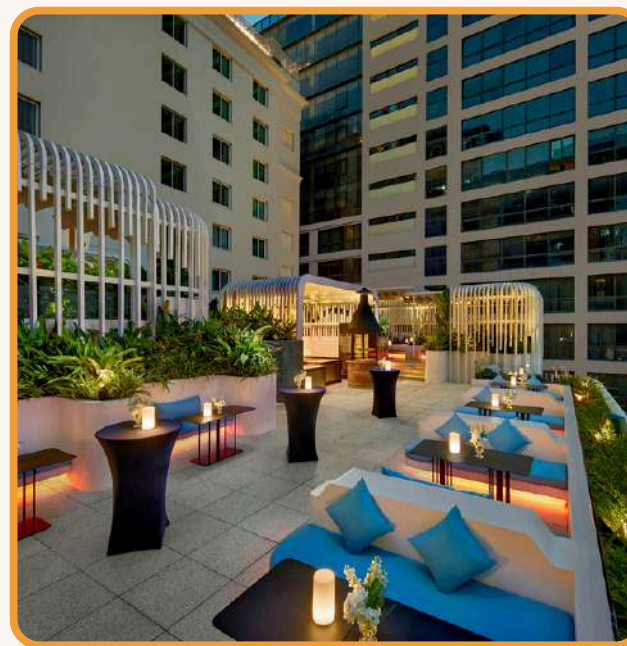
83A Ly Thuong Kiet Street, Cua Nam Ward, Hoan Kiem District, Hanoi, Vietnam

CAPACITY: 155 ROOMS

- 155 Elegant Non-Smoking Rooms & Suites
- Classic Room (32m²) – 89 units
- Premium Room (32m²) – 36 units
- Executive Room (32m²) – 24 units
- Executive Deluxe Room (35m²) – 4 units
- Executive Suite (62m²) – 2 unit



Hanoi Accommodations



MÖVENPICK HOTEL HANOI CENTRE 5* LUXURY

F&B OUTLETS

- O Macanese Restaurant – Cantonese-Portuguese cuisine, open for lunch & dinner | 63 seats
- Mangosteen Restaurant – All-day dining with Asian & Western cuisine | 110 seats

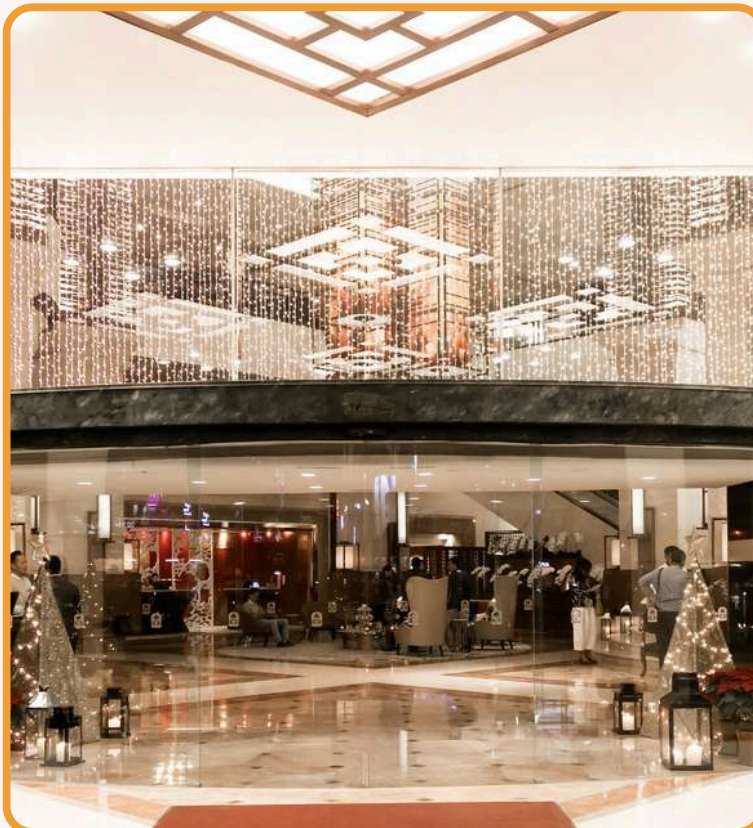
MEETING & EVENT

Host seamless events with two modern meeting rooms and a stunning ballroom, featuring high ceilings, natural lighting, professional catering, and state-of-the-art equipment:

- Long Bien Ballroom – 236m² | Up to 280 guests
- Đồng Xuân Meeting Room – 105m² | Up to 90 guests
- Quang Ba Meeting Room – 91m² | Up to 100 guests



Hanoi Accommodations



PAN PACIFIC 5* DELUXE

OVERVIEW

The hotel boasts an impressive collection of 272 guestrooms and 56 exquisitely designed serviced suites. Nestled just minutes from the historic Old Quarter, it commands breathtaking panoramic views of West Lake, Truc Bach Lake, and the majestic Red River. Its prime central location also provides seamless access to the bustling business district, blending convenience with stunning scenery.

LOCATION

1 Thanh Nien Road, Ba Dinh District, Hanoi, Vietnam.

CAPACITY: 328 ROOMS

Deluxe Room (35m²): 95 units (King rooms) | 37 units (Twin rooms)
Deluxe Lakeview Room (35m²): 29 units (King rooms) | 11 units (Twin rooms)
Premier Lakeview Room (35m²): 27 units (King rooms) | 6 units (Twin rooms)
Pacific Club Room (35m²): 28 units (King rooms) | 3 units (Twin rooms)
Pacific Club Lakeview Room (35m²): 13 units (King rooms)
Studio Suite (48m²): 10 units



Hanoi Accommodations



PAN PACIFIC 5* DELUXE

F&B OUTLETS

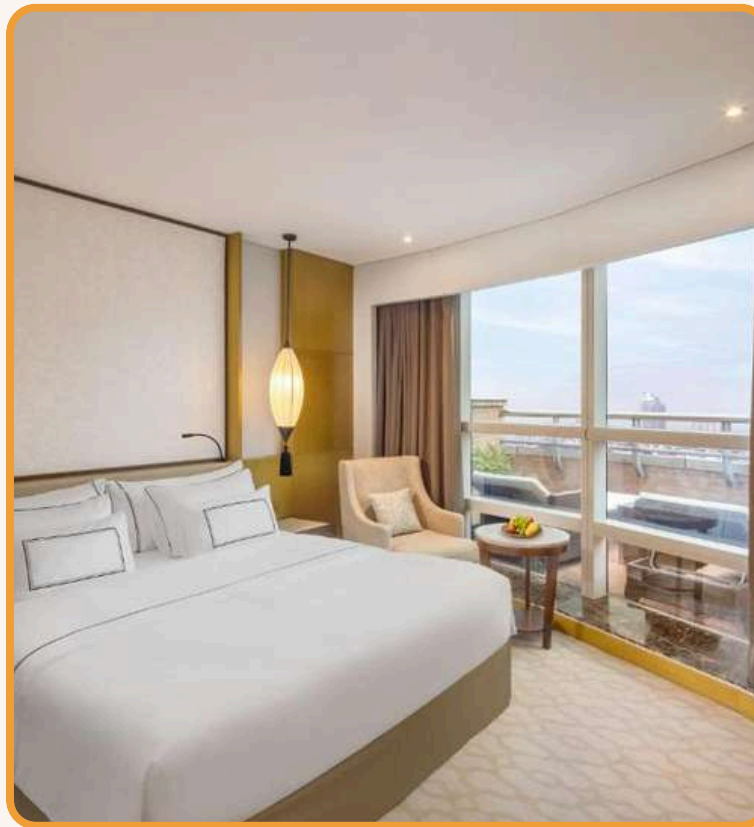
- Pacific Restaurant: A vibrant all-day dining venue with a seating capacity of 126 guests.
- Ming Restaurant: A refined destination for lunch and dinner, accommodating up to 168 guests.
- The Summit Bar: A stylish spot for afternoon tea, cocktails, and an À La Carte menu, with a capacity of 97 guests.

MEETING & EVENT

- Pacific Ballroom: 420 m², accommodates up to 360 guests in banquet style.
- Hoi An Room: 128 m², ideal for up to 80 guests in banquet style.
- Saigon & Da Nang Room: 130 m², perfect for gatherings of up to 60 guests in banquet style.
- Westlake Room (19th floor): 380 m², featuring a breathtaking panoramic view of Hanoi's skyline, accommodates up to 170 guests in banquet style.



Hanoi Accommodations



MELIÁ HANOI 5* DELUXE

OVERVIEW

The hotel enjoys a prime location near Hoan Kiem Lake, the Old Quarter, and the Hanoi Opera House, offering the perfect blend of modern elegance and Vietnamese charm. Featuring 306 stylish rooms and suites, the hotel boasts a luxurious spa, outdoor pool, state-of-the-art fitness center, and one of Vietnam's largest conference centers, making it an ideal destination for both business travelers and memorable events.

LOCATION

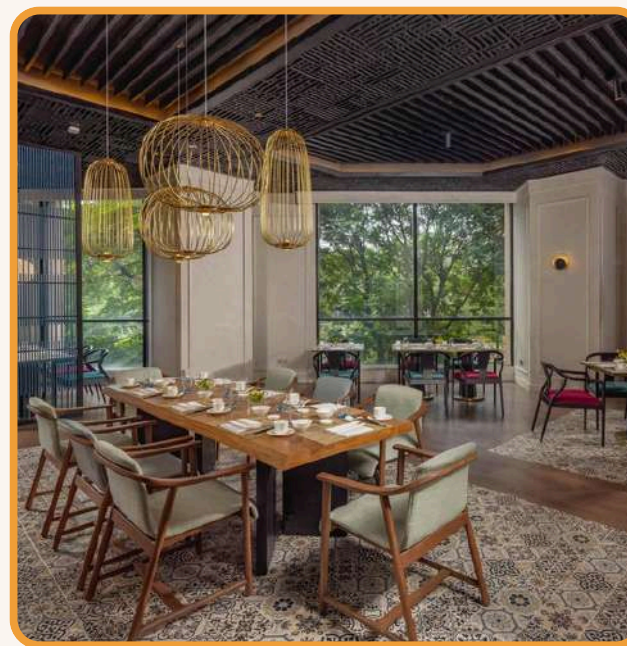
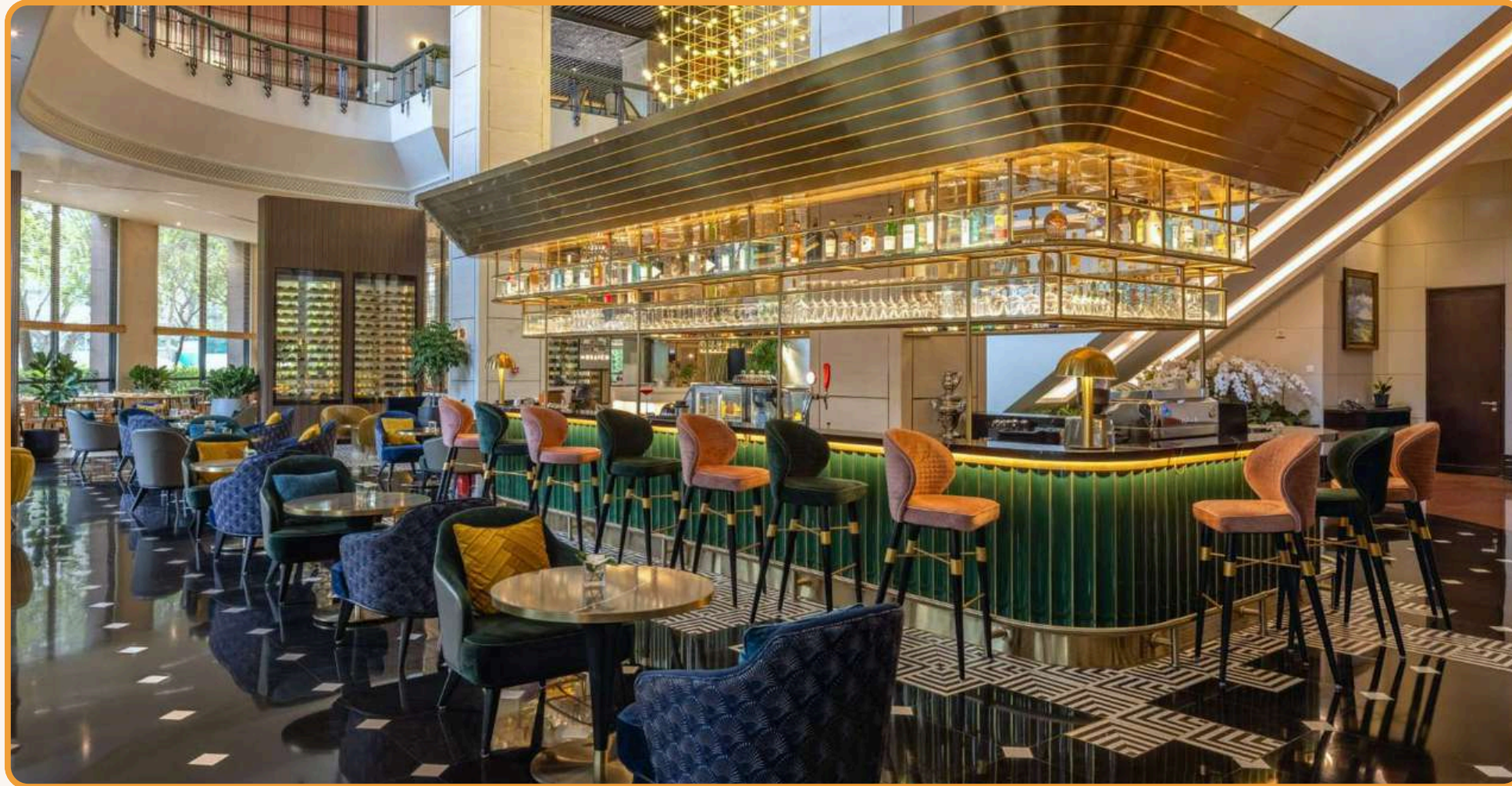
1 Thanh Nien Road, Ba Dinh District, Hanoi, Vietnam.

CAPACITY: 306 ROOMS

Deluxe Room (35m²): 95 units (King rooms) | 37 units (Twin rooms)
Deluxe Lakeview Room (35m²): 29 units (King rooms) | 11 units (Twin rooms)
Premier Lakeview Room (35m²): 27 units (King rooms) | 6 units (Twin rooms)
Pacific Club Room (35m²): 28 units (King rooms) | 3 units (Twin rooms)
Pacific Club Lakeview Room (35m²): 13 units (King rooms)
Studio Suite (48m²): 10 units



Hanoi Accommodations



MELIÁ HANOI 5* DELUXE

F&B OUTLETS

- Mosaico Restaurant: An all-day dining venue offering a relaxed yet refined Mediterranean culinary experience.
- Cham – Fine Street Food Restaurant: Located on the first floor, Cham brings the vibrant flavors of authentic Asian street food to life in a stylish setting.

MEETING & EVENT

Meliá Hanoi offers versatile meeting spaces designed for small to medium-sized gatherings, equipped with state-of-the-art conference technology to elevate any event—whether it's a grand celebration or a high-impact business meeting.

- Grand Ballroom: 980m², accommodates up to 840 guests, banquet style
- Thang Long Ballroom: 531m², accommodates up to 360 guests, banquet style



Hanoi Accommodations



GRAND MERCURE HANOI 5* DELUXE

OVERVIEW

Step into a world where contemporary sophistication blends seamlessly with authentic Vietnamese culture. A proud 5-star Accor hotel, Grand Mercure Hanoi offers an exceptional stay with two exquisite restaurants, a stylish lobby lounge, a breathtaking rooftop bar with a glass-walled pool, a serene luxury spa, and an exclusive executive lounge. Designed for both leisure and business travelers, our versatile event spaces provide the perfect setting for any occasion. With genuine hospitality and a deep appreciation for Vietnam's rich heritage, we promise an unforgettable experience in the heart of Hanoi.

LOCATION

9 Cat Linh Street, Quoc Tu Giam Ward, Dong Da District, Hanoi, Vietnam

CAPACITY: 181 ROOMS

- Deluxe room (27 – 32m²): 97 units
- Grand Deluxe room (27 – 32m²): 35 units
- Executive room (27 – 32m²): 38 units
- Deluxe Suite room (75m²): 10 units
- Presidential Suite (116m²): 01 units



Hanoi Accommodations



GRAND MERCURE HANOI 5* DELUXE

F&B OUTLETS

- Loc – Ally Restaurant – A vibrant all-day dining venue serving local and international cuisines.
- Cat Vi Restaurant – A refined lunch and dinner destination offering Asian fusion cuisine.

MEETING & EVENT

Grand Mercure Hanoi provides flexible, elegantly designed venues for meetings and events:

- Trang An Grand Ballroom – 327m² | Accommodates 250 guests
- Trang An 1 – 204m² | Accommodates 120 guests
- Trang An 2 – 120m² | Accommodates 60 guests



Hanoi Accommodations



NOVOTEL HANOI THAI HA 5* DELUXE

OVERVIEW

Ideally located in central Hanoi, Novotel Hanoi Thai Ha provides seamless access to residential areas, universities, offices, shopping centers, and cultural hotspots. The hotel boasts 343 stylish rooms, suites, and apartments, designed with spacious layouts, abundant natural light, and distinctive wall art. With 11 flexible function spaces, it is the perfect venue for meetings, conferences, and events, accommodating up to 399 guests.

LOCATION

2 Thai Ha Street, Dong Da District, Hanoi, Vietnam

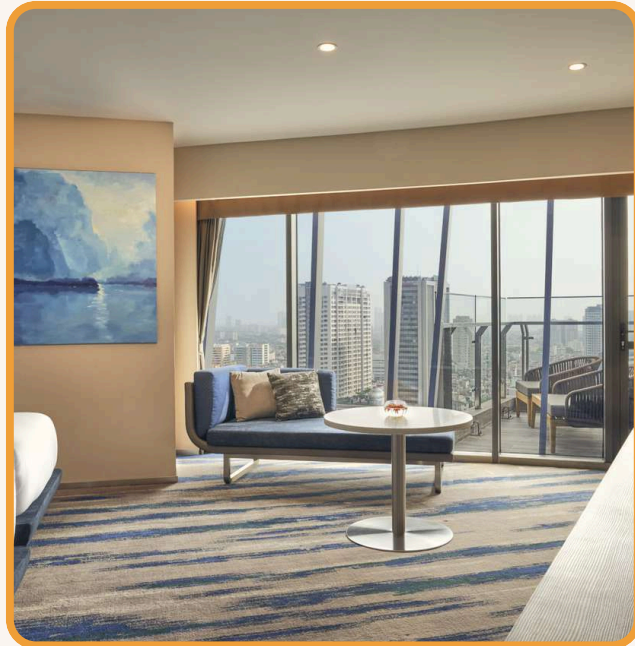
CAPACITY: 343 ROOMS

343 Modern Rooms, Suites & Apartments

- Superior Room (31–45m²) – 233 units
- Deluxe Studio Room (48–53m²) – 56 units
- Executive Apartment (55–94m²) – 46 units
- Suite Room (81m²) – 8 units



Hanoi Accommodations



NOVOTEL HANOI THAI HA 5* DELUXE

F&B OUTLETS

- Food Exchange – All-day dining with 278 seats and 4 VIP rooms
- Premier Lounge – Top-floor all-day dining with 134 seats, offering exclusive comfort and stunning views

MEETING & EVENT

Novotel Hanoi Thai Ha offers 10 meeting rooms and a grand ballroom, accommodating up to 399 guests, perfect for conferences, corporate events, and special occasions.

- Thai Ha Ballroom – 567m² | Up to 399 guests
- Jasmine Grand – 100m² | Up to 64 guests
- Orchid Grand – 114m² | Up to 60 guests
- FE Grand 1 – 131m² | Up to 92 guests



HALONG ACCOMMODATIONS



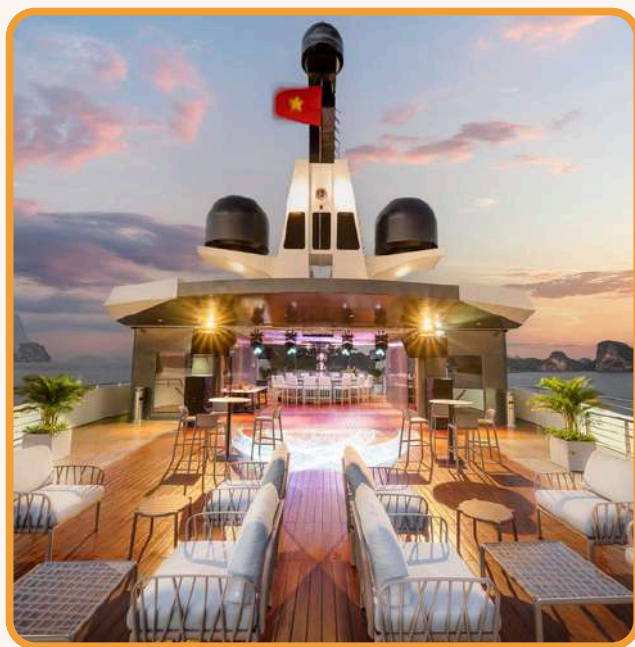
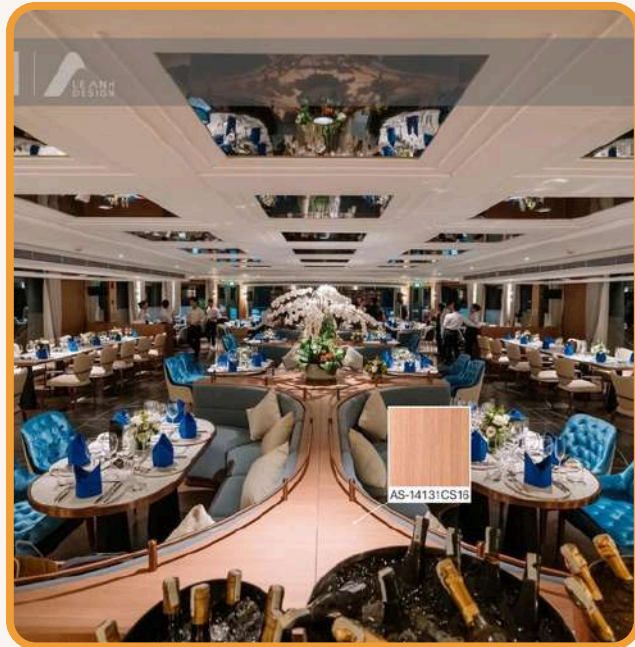
auroratravel.asia



THE BREATHTAKING UNESCO WORLD HERITAGE SITE



HALONG Accommodations



Grand Pioneer cruise 5* Luxury

OVERVIEW

Grand Pioneers Cruise, launched in 2022, redefines luxury with eco-friendly voyages through the enchanting Halong Bay. This impressive vessel features 55 elegantly appointed suites across six decks, including Ocean, Veranda, Executive, and the exclusive Owner's Suite with its private hot tub. Guests are treated to a wealth of onboard amenities, from exquisite fine dining and a refreshing saltwater pool to a chic sky bar, rejuvenating spa, state-of-the-art fitness center, karaoke and poker rooms, a dedicated kid's club, and even a 3D golf simulator for endless entertainment. Committed to sustainability without compromising luxury, the cruise utilizes advanced eco-friendly technologies such as chiller air conditioning and sophisticated water filtration systems to reduce emissions. Experience the perfect fusion of opulence and environmental responsibility aboard Grand Pioneers Cruise.

LOCATION

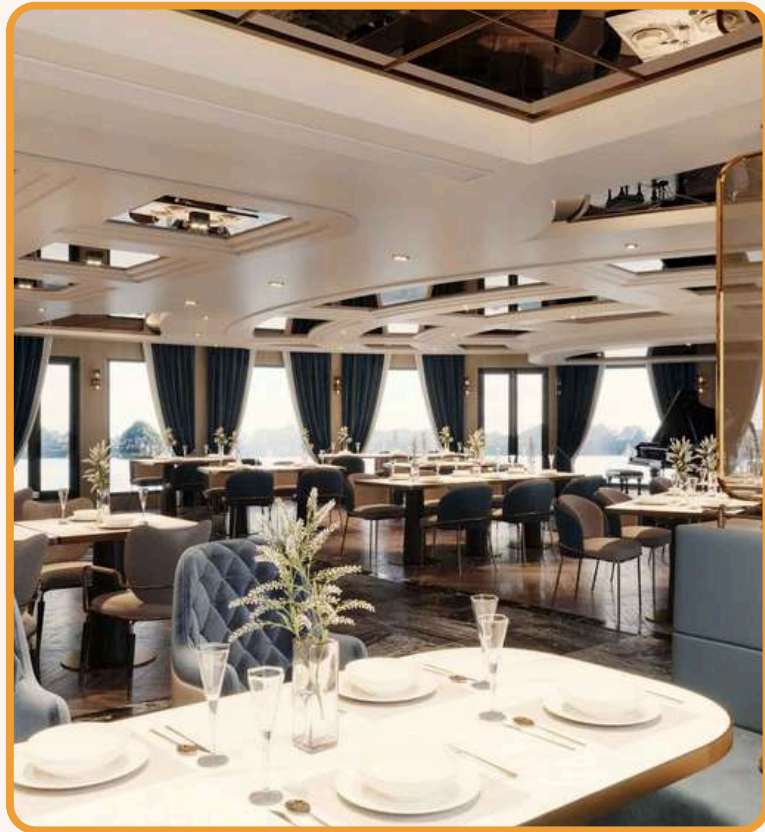
Ha Long Bay

CAPACITY: 55 CABINS

- Ocean Suite: 2 cabins| 1st floor| 30m2| Large window with ocean view
- Ocean Suite triple: 4 cabins| 1st floor| 43m2| Large window with ocean view
- Ocean Balcony Suite: 12 cabins| Floor 2-3-4| 40m2| Private balcony, partial Ocean view



HALONG Accommodations



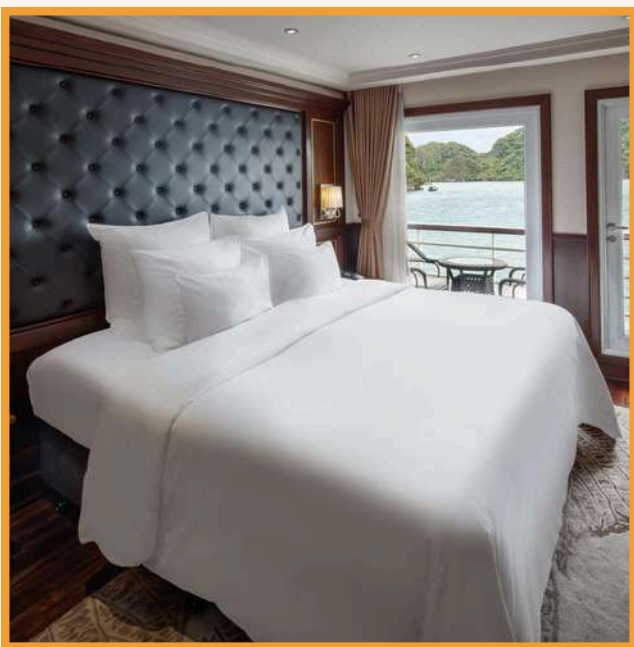
Grand Pionier cruise 5* Luxury

F&B OUTLETS

Dining By The Bay: 5th floor| 160 guests



HALONG Accommodations



Paradise Elegance 5*

OVERVIEW

Paradise Elegance is a modern luxury cruise vessel launched in 2017, offering refined journeys through Vietnam’s iconic Halong Bay—a UNESCO World Heritage site. This meticulously designed steel boat harmoniously blends contemporary styling with Vietnamese design elements, creating an elegant setting for exploration. The cruise features 31 spacious cabins, each with a private balcony that provides uninterrupted views of the bay’s breathtaking landscapes. With a range of options including Deluxe Balcony, Executive Balcony, and the Elegance Balcony Suite, every cabin is equipped with modern amenities to ensure a comfortable and memorable stay.

LOCATION

Ha Long Bay

CAPACITY: 31 CABINS

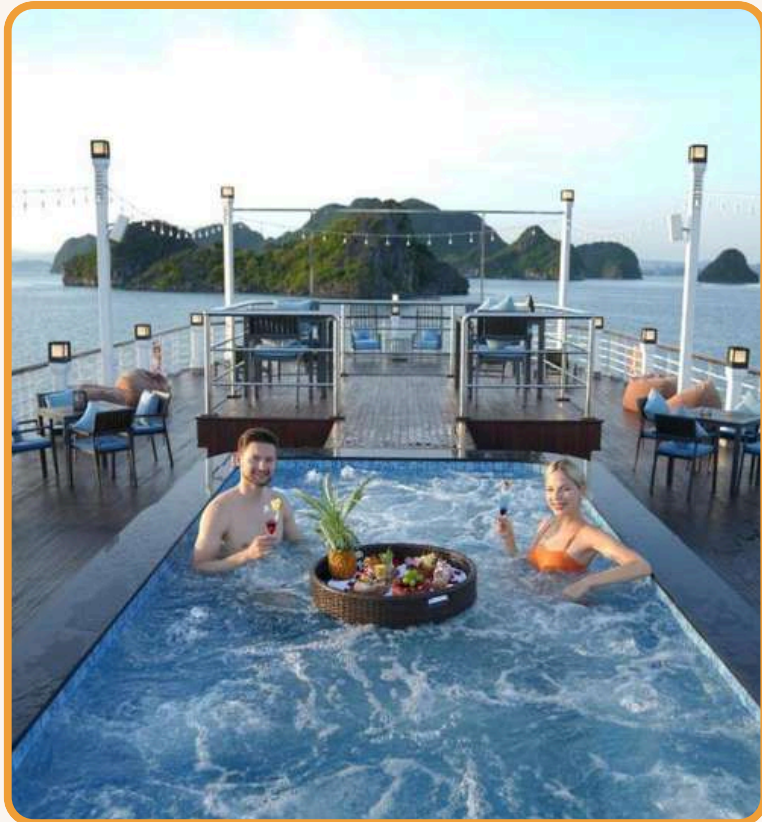
- Deluxe Balcony: 14 cabins| 25m2
- Executive Balcony: 12 cabins| 25m2
- Elegance Balcony Suite: 02 cabins| 35m2
- Captain’s View Terrace Suite : 02 cabins| 35m2

F&B OUTLETS

Le Marin restaurant: 90 seats
Le Piano lounge: 40 seats



HALONG Accommodations



Paradise Grand 5*

OVERVIEW

Paradise Grand is the pinnacle of luxury cruising in Lan Ha Bay, building on the legacy of Paradise Elegance. Voted the most luxurious floating destination, it offers Michelin-starred dining and world-class amenities. The vessel features 39 lavish suites with private balconies for breathtaking views, fine cuisine, an innovative sundeck, open-air cinema, indulgent spa, and personalized butler service. Curated itineraries include kayaking, village explorations, Cat Ba hiking, tai chi sessions, and live music for an immersive experience.

LOCATION

Lan Ha Bay

CAPACITY: 39 CABINS

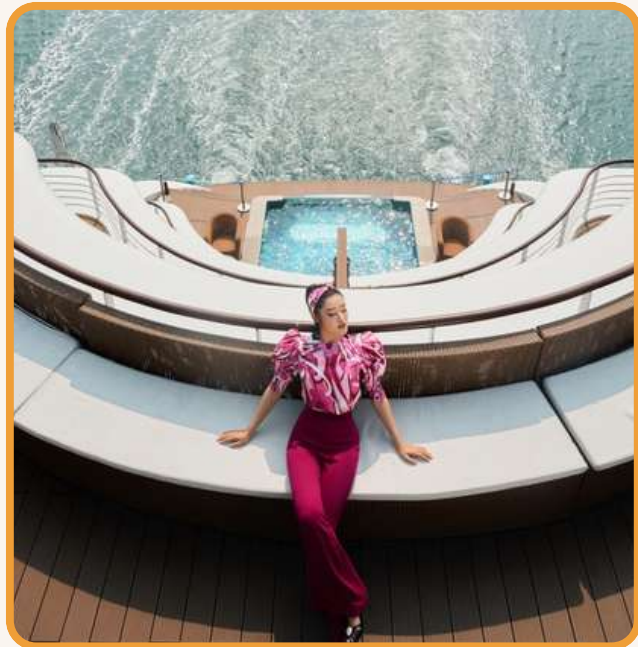
- Grand balcony: 18 cabins| 28m2
- Executive Grand balcony: 17 cabins| 28m2
- Grand balcony suite: 02 cabins| 35m2
- Captain's View Terrace Suite: 02 cabins| 35m2

F&B OUTLETS

Sundeck: 450m2| 120 guests
La Espacia restaurant: 80 guests
Piano Lounge: 40 guest



HALONG Accommodations



Capella Cruise 5*

OVERVIEW

Launched in August 2020, Capella Cruise is a luxury superyacht that offers overnight journeys through Halong and Lan Ha Bays. Merging modern design with Indochinese elegance, the vessel features 33 spacious cabins and suites complete with private balconies and ocean-view bathtubs. Guests enjoy premium amenities including dual infinity pools, a jacuzzi, water slide, mini-golf, spa, Nordic-style outdoor sauna, lounge, and a Cigar & Poker Club. The diverse dining options cater to all tastes, while the itinerary explores off-the-beaten-path spots like Ao Ech Area and Dark & Bright Cave, with activities such as kayaking, swimming, and Vietnamese cooking demonstrations.

LOCATION

1Lan Ha Bay

CAPACITY: 33 CABINS & SUITE

Oasis Suite: 11 cabins| 1st floor| 32m2| private balcony, ocean-view

Harmony Suite: 05 cabins| 2nd floor| 32m2| private balcony, ocean-view

Sky Suite: 07 cabins| 3rd floor| 32m2| private balcony, ocean-view

Sky Terrace Suite: 02 cabins| 3rd floor| 45m2| private terrace with sunbeds, ocean-view

La Suite De Capella: 02 cabins| 2nd floor| 57m2| private terrace, ocean-view

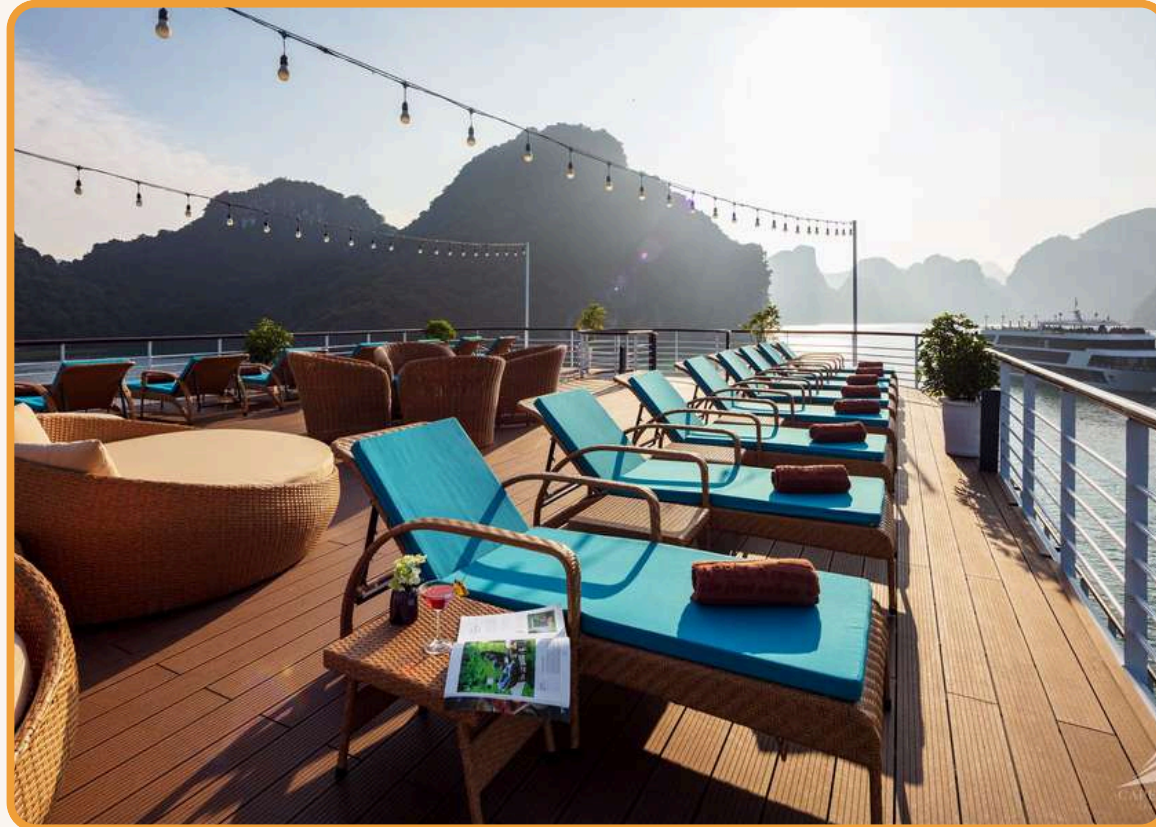
The owner Suite: 01 cabin| 3rd floor| 92m2| private sundeck, panorama view

Harmony family suite: 01 cabin| 2nd floor| 48m2| private balcony, ocean-view

Sky family suite: 01 cabin| 3rd floor| 43m2| private balcony, ocean-view



HALONG Accommodations



Capella Cruise 5*

F&B OUTLETS

- Harmony Of The Sea Restaurant: 2nd floor| up to 80 guests
- Open Sky Sundeck: 5th floor (Top deck)
- Spirit Of The Sea Lounge: 4th deck



HALONG Accommodations



La Regina Royal 5*

OVERVIEW

The cruise boasts elegantly designed cabins featuring expansive windows or private balconies that showcase breathtaking views of Halong Bay. The Royal and Princess Suites seamlessly blend modern comforts with traditional charm, offering a culturally immersive and luxurious experience.

LOCATION

Ha Long Bay

CAPACITY: 26 CABINS

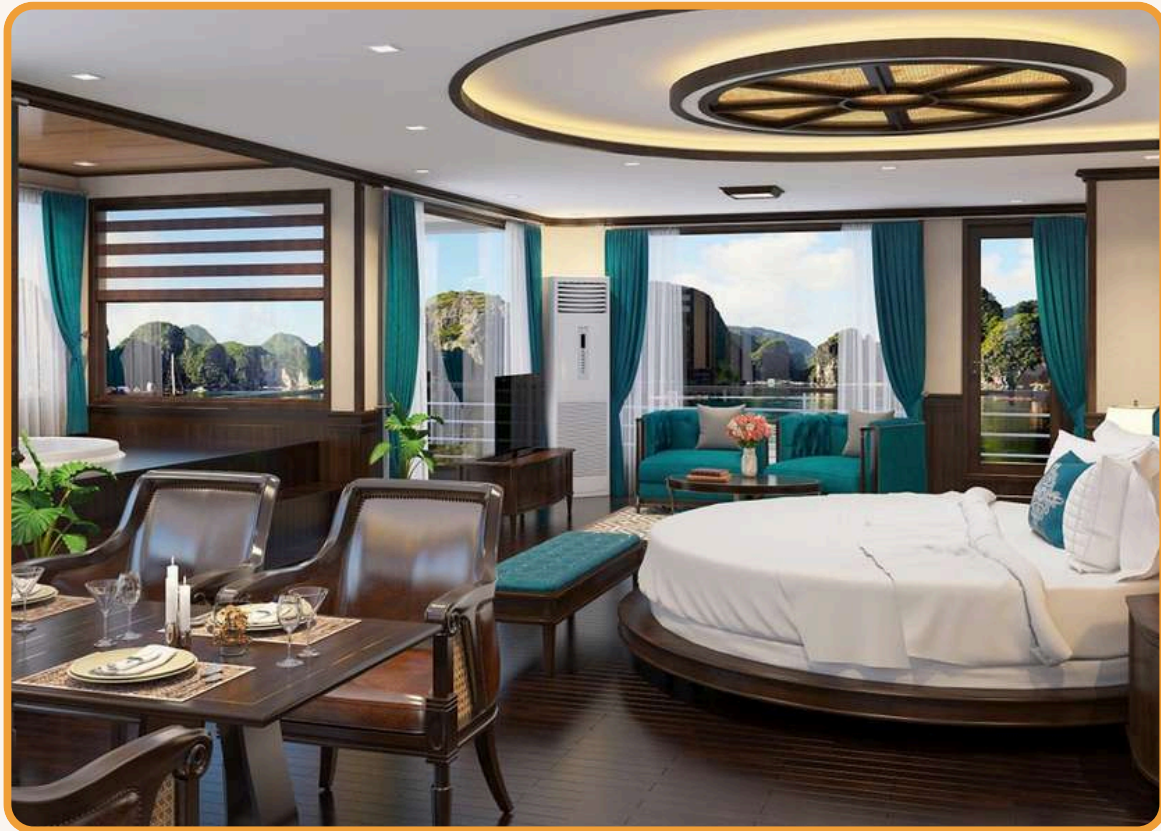
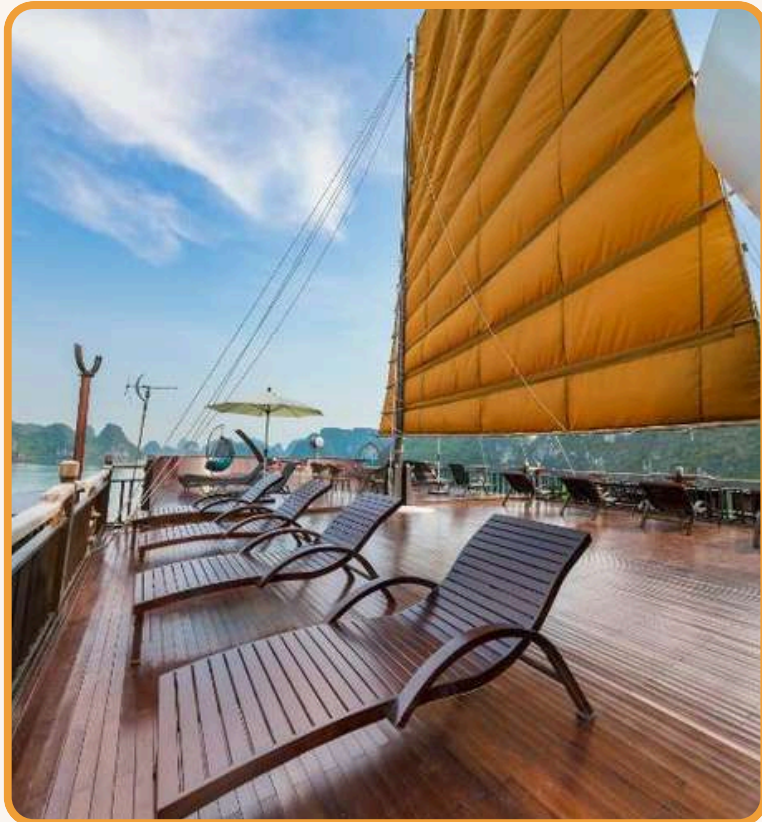
Noble Suite: 12 cabins| 1st deck| 26m2
Imperial Suite: 08 cabins| 2nd deck| 26m2
Royal Suite : 02 cabins| 2nd deck| 35m2
Family Suite connecting : 04cabins| floor 1, 2| 52m2

F&B OUTLETS

- The Grace restaurant: 2nd deck| 60 guests
- Top deck bar: Top deck| 60 guests



HALONG Accommodations



La Regina Legend 5*

OVERVIEW

La Regina Legend exudes elegance by seamlessly blending the timeless charm of classic ocean liners—with exquisite wood detailing and brass fixtures—with modern luxury. Its 27 suites feature expansive private balconies and offer breathtaking bay views, ensuring a truly immersive experience. Every detail speaks of sophistication, from the intricately decorated paintings of Vietnamese queens in the restaurant to the rich wood-paneled library. With four decks of refined beauty, meticulous craftsmanship and thoughtful design invite you to explore hidden gems at every turn, making each space a delightful discovery and the perfect retreat on board.

LOCATION

Lan Ha Bay

CAPACITY: 27 CABINS

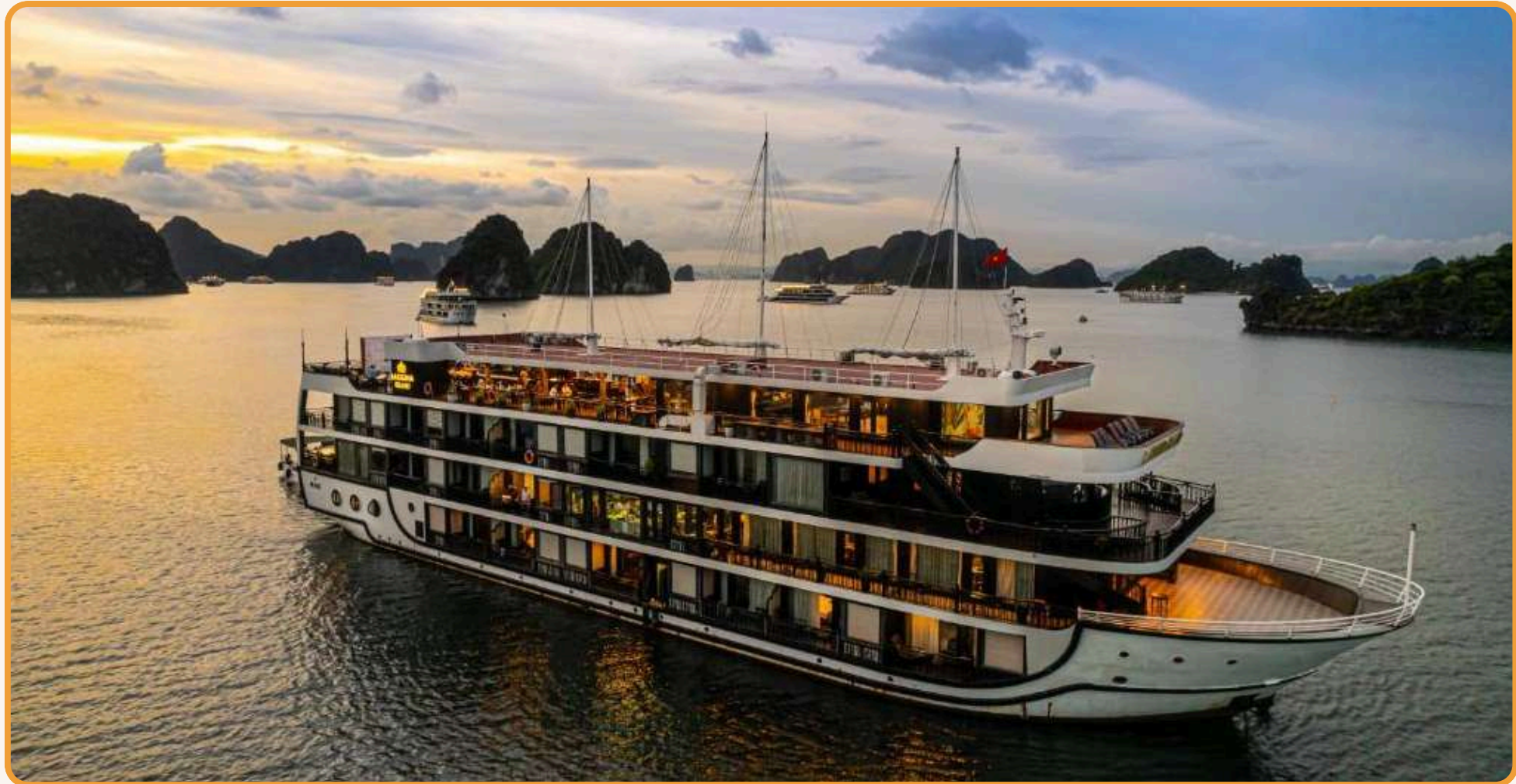
Princess Suite: 22 cabins| Floor 1, 2, 3| 45m2
Queen triple Suite: 04 cabins| Floor 2, 3| 54m2
Queen Regent: 01 cabin| 2nd floor| 135m2

F&B OUTLETS

- La Corona restaurant : 2nd deck| 100 guests
- Le Magia cafe : 2nd deck| 50 guests



HALONG Accommodations



La Regina Grand 5*

OVERVIEW

La Regina Grand, The Queen of the Bays, evokes the colonial elegance of 1930s Indochina with timeless sophistication. Boasting 27 spacious suites adorned with floor-to-ceiling windows and private balconies, each room offers spectacular panoramic views of Lan Ha Bay. Every suite serves as a serene retreat, seamlessly blending classic elegance with modern luxury, all complemented by impeccable, personalized service.

LOCATION

Lan Ha Bay

CAPACITY: 27 CABINS

- Bai Tu Long Suite: 12 cabins| 1st floor| 45m2
- Ha Long Suite: 05 cabins| 2nd floor| 45m2
- Lan Ha Suite: 05 cabins| 3rd floor| 45m2
- Lan Ha Suite: 01 cabin| 3rd floor|54m2
- Lan Ha Junior Grand Suite: 02 cabins| 3rd floor|60m2
- Lan Ha Duplex Suite: 01 cabin| 2nd & 3rd floor|90m2
- Lan Ha Grand Suite: 01 cabin| 3rd floor|135m2



HALONG Accommodations



La Regina Grand 5*

F&B OUTLETS

- Ha Long Restaurant: 2nd deck| 100 guests
- Cat Ba Oasis sundeck: top deck| 50 guests



HALONG Accommodations



Indochine Premium Cruise 5* Luxury

OVERVIEW

Indochine Premium Ha Long (Indochine II), the intimate sister ship of Indochine Lan Ha (Indochine I), encapsulates colonial elegance on a smaller scale. Spanning four decks, it offers 37 cabins with private balconies and freestanding bathtubs. Guests enjoy a range of amenities—including a restaurant, bar, lounge, spa, sundeck, and kids’ club—with standout features such as a gym, mini golf course, swimming pool, and a wine and cigar cellar, ensuring an active yet indulgent cruise experience amid the breathtaking beauty of Halong Bay.

LOCATION

Ha Long Bay

CAPACITY: 37 CABINS

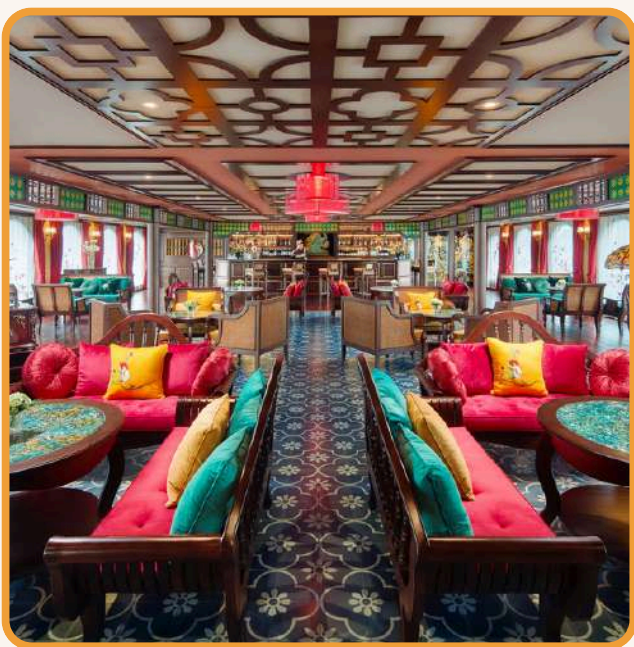
Junior Suite: 02 cabins| 34m2
Suite: 14 cabins| 46m2
Executive Suite: 02 cabins| 56m2
President Suite: 01 cabin| 115m2

F&B OUTLETS

- Indochine restaurant: 350m2| 100 guests
- Cochinchine Lounge: 350m2| 80 guests
- Sky Lounge: 350m2| 100 guests
- Sundeck: 1,100m2



HALONG Accommodations



Indochine Lan Ha Cruise 5*

OVERVIEW

Redesigned in 2023, Indochine Lan Ha Cruise redefines luxury on Lan Ha Bay with 45 elegantly crafted cabins that seamlessly merge heritage charm with modern sophistication. Sail through the bay and indulge in an array of world-class amenities—from a sprawling sundeck and exclusive lounges to exquisite fine dining experiences where tradition meets contemporary comfort. What truly sets Indochine Lan Ha Cruise apart is its commitment to handcrafted elegance and premium leisure. Each oak-crafted cabin boasts floor-to-ceiling windows and a private balcony that offers breathtaking panoramic views of Lan Ha Bay, ensuring an unforgettable journey.

LOCATION

Lan Ha Bay

CAPACITY: 45 CABINS

Junior Suite: : 34 cabins| 1st & 2nd deck| 32m2| private balcony
Suite: 08 cabins| 3rd deck| 42m2| private balcony
Executive Suite: 02 cabins| 2nd deck| 56m2| panorama view, private balcony
President Suite: 01 cabin| 3rd deck| 80m2| bedroom & living room, private balcony

F&B OUTLETS

Tonkin Restaurant: 350m2| 100 guests
An Nam Restaurant: 150m2| 70 guests
Cochinchine Lounge: 350m2| 100 guests
Sky Lounge: 250m2| 80 guests
Sundeck: 1,100m2



HALONG Accommodations



Indochine Lan Ha Cruise 5* Luxury

OVERVIEW

Introducing Indochine Grand, the newest addition to our fleet, launched in February 2025. This steel-hulled cruise features 32 opulent cabins, meticulously crafted with high-quality natural wood, nostalgic elegance, and exquisite detailing. Each cabin offers a private balcony and panoramic windows that frame breathtaking views of Lan Ha Bay. Blending Vietnam’s colonial charm with modern luxury, Indochine Grand promises an intimate and refined voyage—where timeless design meets contemporary sophistication for an exclusive and unforgettable escape.

LOCATION

Lan Ha Bay

CAPACITY: 32 CABINS

Junior Suite: 28 cabins| 1st & 2nd floor| 28m2| private balcony, sea view
Suite: 02 cabins| 1st floor| 36m2| private balcony, lacquer wall, sea view
Executive Suite: 01 cabin| 2nd floor| 40m2| panorama Bay View, Private balcony
President Suite: 01 cabin| 2nd floor| 58m2| panorama Bay View, private living room, bedroom, private balcony

F&B OUTLETS

Restaurant: 180m2| 70 pax
Lounge: 200m2| 70 pax
Infinity deck: 300m2| 100 pax



HALONG Accommodations



Au Co cruise 5*

OVERVIEW

One of Halong’s most elegant vessels, the steel-hulled Au Co glides gracefully through Halong and Lan Ha Bays. In June 2024, the twin Au Co ships underwent a complete renovation that harmoniously blends modern elegance with the timeless Vietnamese legend of Princess Au Co and the Dragon Lord. Returning guests will be delighted to experience the same sophisticated ambiance, now enhanced with refreshed cabins featuring modern Asian design accents.

LOCATION

Lan Ha Bay

CAPACITY: 32 CABINS

- Deluxe: 14 cabins| main deck| 20m2
- Executive: 12 cabins| Upper deck| 20m2
- Grand deluxe: 02 cabins| Upper deck| 20m2
- Long Quan Suite: 02 cabins| Upper deck afterward| 40m2
- Au Co Suite: 02 cabins| Upper deck forward| 36m2

F&B OUTLETS

- The Terrace Deck Restaurant:
- Sundeck
- Bar



NINH BINH ACCOMMODATIONS



auroratravel.asia



THE BREATHTAKING UNESCO WORLD HERITAGE SITE



NINH BINH Accommodations



Emeralda Ninh Binh

NUMBER OF ROOMS

- 116 Superior Room (50m2)
- 36 Deluxe Room (77m2)
- 20 Duplex Room (107m2)

LOCATION

- Located on the edge of Van Long Nature Reserve, a primeval tropical forest in Ninh Binh

BALLROOM

- Can arrange up to 450 people



NINH BINH Accommodations



Emeralda Ninh Binh Restaurant & Bar

RESTAURANT & BAR

- Sen Restaurant: Vietnamese Cuisine
- Organic Restaurant: Asian and Western Cuisine



NINH BINH Accommodations



Emeralda Tam Coc

NUMBER OF ROOMS

- Superior Room (36m2)
- Deluxe Room (50m2)
- Premium Deluxe Room (66m2)
- Imperial Room (88m2)

LOCATION

- Set in Village Van Lam, Ninh Hai Commune, Hoa Lu District, Ninh Binh, 24 km from Bai Dinh Temple...

BALLROOM

- Can arrange up to 100 people in the restaurant



NINH BINH Accommodations



Emeralda Tam Coc Restaurant & Bar

RESTAURANT & BAR

- Com Restaurant: From Asian to Western dishes
- Jade Bar: Snacks and Drinks





Thank You



Head Office: VINARE Building, Le Duan St., Hoan Kiem, Hanoi, Vietnam

Tel: +84 24 3747 2597 | www.auroratravel.asia | mice@auroratravel.asia