



# NORTHERN VIETNAM

## HOTELS

# TABLE OF CONTENTS



auroratravel.asia



**HANOI ACCOMMODATIONS**

**MAI CHAU ACCOMMODATIONS**

**SAPA ACCOMMODATIONS**

**NINH BINH ACCOMMODATIONS**

**HALONG CRUISES**



# HANOI ACCOMMODATIONS



auroratravel.asia



**THE GREAT STARTING POINT FOR YOUR VIETNAM EXPERIENCE**



# Hanoi Accommodations



## MELIA HOTEL 5\* DELUXE

### OVERVIEW

The hotel offers a prime location in the heart of the city, with 306 elegant rooms and suites, combines contemporary sophistication with Vietnamese charm, featuring a spa, outdoor pool, fitness center, and one of the country's largest conference venues—perfect for both business and special events.

### LOCATION

44B Ly Thuong Kiet Street, Ha Noi. City center.

### CAPACITY

306 Rooms & Suites | 32m<sup>2</sup> - 168m<sup>2</sup>

### F&B OUTLETS

- Mosaico Restaurant | Mediterranean dining | 06:00 - 23:00 | 191 seats
- Cham Restaurant | Asian cuisine | 18:00 - 22:00 | 92 seats
- Garbo Gastro Bar | Light bites & drinks | 07:00 - 00:00<sup>+1</sup> | 64 seats

### MEETING & EVENT

Boasting 2 gorgeous ballrooms and a range of stately meeting rooms:

- Grand Ballroom (Hanoi's largest) | 988m<sup>2</sup> | 7m height | 840 guests banquet
- Long Ballroom | 531m<sup>2</sup> | 5.8m height | 360 guests banquet



# Hanoi Accommodations



## PAN PACIFIC HOTEL 5\* DELUXE

### OVERVIEW

The hotel boasts an impressive collection of 272 guestrooms and 60 exquisitely designed serviced suites. Nestled just minutes from the historic Old Quarter, it commands breathtaking panoramic views of West Lake, Truc Bach Lake, and the majestic Red River. Its prime central location also provides seamless access to the bustling business district, blending convenience with stunning scenery.

### LOCATION

01 Thanh Nien Road, Ha Noi. City center, 10 minutes to the Old Quarter.

### CAPACITY

332 Rooms & Suites | 35m<sup>2</sup> - 287m<sup>2</sup>

### F&B OUTLETS

- Pacifica Restaurant | 06:00 - 22:00 | 126 seats
- Ming Restaurant | 11:00 - 22:00 | 168 seats
- Song Hong Bar & Pastry Corner | 07:00 - 21:00 | 72 seats
- The Summit Bar | 14:00 - 00:00 | 97 seats (Westlake view)

### MEETING & EVENT

- Pacific Ballroom | 420m<sup>2</sup> | 4.6m-5.7m height | 360 guests banquet
- Hanoi & Hai Phong Room | 163m<sup>2</sup> | 2.5m height | 80 guests banquet
- Saigon & Da Nang Room | 130m<sup>2</sup> | 2.5m height | 60 guests banquet
- Westlake Room (19th floor) | 380m<sup>2</sup> | 170 guests banquet



# Hanoi Accommodations

## JW MARRIOTT HOTEL HANOI

### 5\* LUXURY

#### OVERVIEW

Set in Hanoi's new Central Business District beside the Vietnam National Convention Center, the hotel offers a striking architectural design inspired by Vietnam's dragon legend and coastline, creating a memorable arrival experience. Surrounded by tropical greenery and lakeside gardens, it features luxurious suites and versatile event spaces ideal for destination weddings, corporate meetings, and mindful retreats.

#### LOCATION

08 Do Duc Duc Road, Ha Noi. Central business district.

#### CAPACITY

450 Rooms & Suites | 48m<sup>2</sup> - 320m<sup>2</sup>

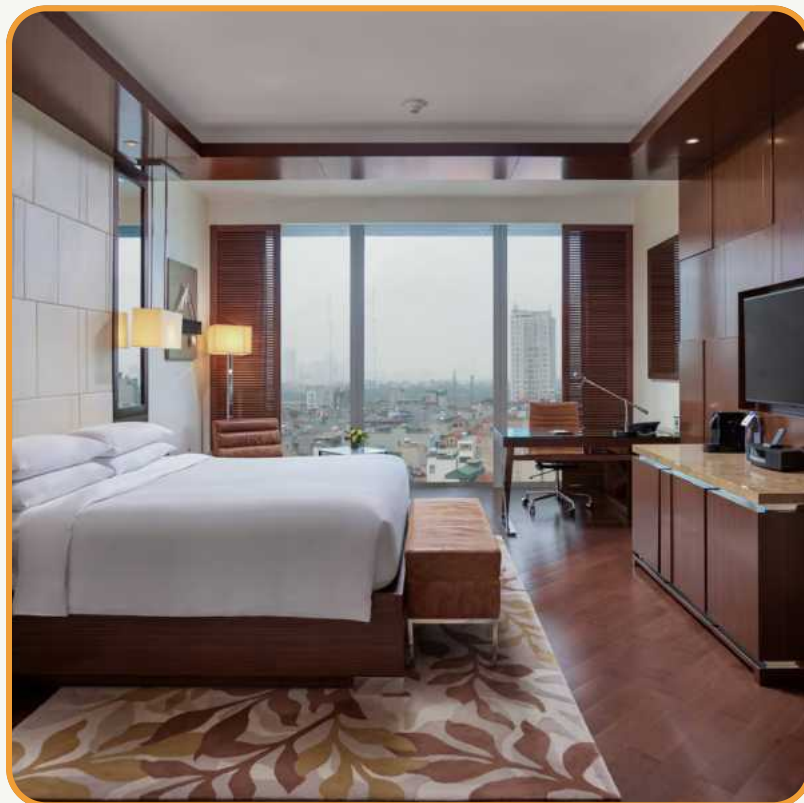
#### F&B OUTLETS

- Kumihimo Modern Japanese Restaurant & Bar | Lunch & Dinner | 56 seats
- JW Café | All-day Dining | 250 seats | scenic lakeside views
- John Anthony Cantonese Grill & Dim Sum | Dinner | 134 seats
- French Grill By Jean-François Nulli | Dinner | 82 seats
- Chinese Restaurant Wong Chi Ming | Lunch & Dinner

#### MEETING & EVENT

Variety of meeting spaces with the latest technology all located on one floor:

- 17 Meeting Rooms
- 2 Ballrooms:
  - + Grand Ballroom | 1000m<sup>2</sup> | 7m height | 950 guests theater, 700 guests banquet
  - + Fansipan Ballroom | 480m<sup>2</sup> | 7m height | 378 guests theater, 300 guests banquet
- The Studio - 06 boardrooms set around sociable living room area



# Hanoi Accommodations



## LOTTE HOTEL HANOI 5\* LUXURY

### OVERVIEW

Lotte Hotel Hanoi stands as the Lotte Group's first five-star property in Vietnam's capital, blending Korean elegance with Vietnamese heritage in a striking Ao Dai-inspired tower. Offering 318 upscale rooms and 14 dynamic event spaces for up to 1,200 guests, it's a premier venue for top-tier meetings, conventions, and celebrations.

### LOCATION

59 Lieu Giai Street, Ha Noi. Easy access to the central business district and the Old Quarter (15-minute drive each)

### CAPACITY

318 Rooms & Suites | 42m<sup>2</sup> - 99m<sup>2</sup>

### F&B OUTLETS

- Top Of Hanoi Sky Bar (Rooftop) | 17:00 - 24:00 | 124 seats
- Grill 63 (Fine Dining & Grill) | All-day Dining | 122 seats
- Pharaoh's Bar & Upper | 17:30 - 24:00 | 86 seats
- Red River Chinese Restaurant | Lunch & Dinner | 104 seats
- Tim Ho Wan Dim Sum | 11:30 - 22:00 | 86 seats
- The Lounge Sky | 08:00 - 22:00 | 73 seats

### MEETING & EVENT

14 stylish function rooms with state-of-the-art sound and lighting systems:

- Crystal Grand Ballroom | 800m<sup>2</sup> | 6.5m height | 600 guests banquet
- Emerald Room | 305m<sup>2</sup> | 3.5m height | 150 guests banquet
- Charlotte Room | 143m<sup>2</sup> | 3.5m height | 80 guests banquet



# Hanoi Accommodations



## INTERCONTINENTAL WESTLAKE 5\* LUXURY

### OVERVIEW

InterContinental Hanoi Westlake offers a serene lakeside escape on the shores of West Lake, adjacent to the historic Golden Lotus Pagoda, set at the core of the city's emerging business hubs. With 293 refined guest rooms and suites—many set in overwater pavilions—the hotel features Vietnamese-inspired interiors, wooden flooring, and private balconies overlooking the lake, pool, or city skyline.

### LOCATION

05 Tu Hoa Street, Ha Noi. Emerging business hubs' center.

### CAPACITY

293 Rooms & Suites | 43m<sup>2</sup> - 172m<sup>2</sup>

### F&B OUTLETS

- Saigon Restaurant (closed Mon & Wed) | 18:00 - 22:30 | 120 seats
- Cafe Du Lac Restaurant | All-day Dining
- Milan Restaurant | 18:00 - 22:30 | 120 seats
- Sunset Bar | 16:00 - 00:00 | 100 seats
- Penfolds Lounge (private dining venue upon request)

### MEETING & EVENT

- Grand Ballroom | 364m<sup>2</sup> | 5m height | 288 guests banquet
- Westlake Meeting Rooms | 33m<sup>2</sup> - 132m<sup>2</sup> | 2.65m height | 70 guests theater
- Saigon & Milan Restaurant | 108 guests banquet each



# Hanoi Accommodations



## GRAND MERCURE HANOI 5\* DELUXE

### OVERVIEW

Grand Mercure Hanoi is a five-star Accor property located at the cultural and economic crossroads of the capital, offering sophisticated luxury and contemporary style in the heart of the city. With 181 elegant rooms, diverse dining options, a rooftop sky bar, glass pool, spa, and discerning event spaces—including the naturally lit Trang An ballroom—it's an ideal venue for both leisure and high-end MICE experiences.

### LOCATION

09 Cat Linh Street, Ha Noi. City center, few minutes away from local attractions (Temple of Literature, Ho Chi Minh Mausoleum, Fine Arts Museum,...)

### CAPACITY

181 Rooms & Suites (Deluxe, Grand Deluxe, Executive, Deluxe Suites) | 27m<sup>2</sup> - 116m<sup>2</sup>

### F&B OUTLETS

- Loc-ally Restaurant (2<sup>nd</sup> floor) | All-day Dining
- Cat Vi Signature Restaurant (15<sup>th</sup> floor) | 17:00 - 23:00
- VIVU Rooftop Sky Bar (Rooftop) | 16:00 - 00:00

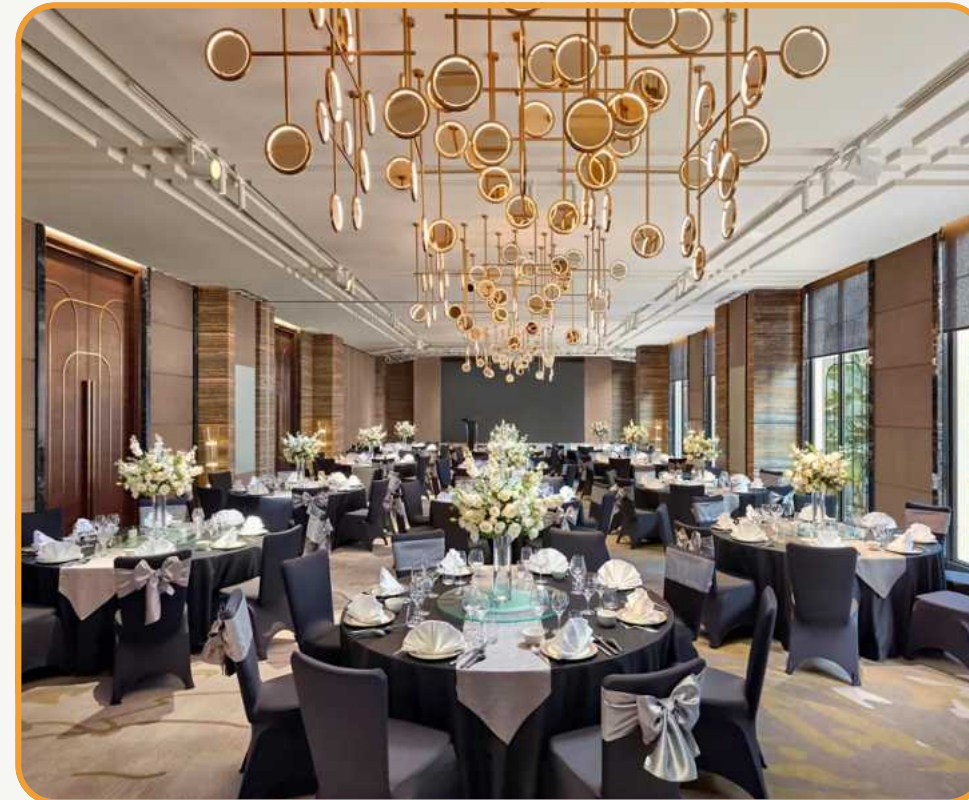
### MEETING & EVENT

Sophisticated and flexible meeting rooms, highlighted by the natural-light ballroom:

- Trang An Grand Ballroom | 324m<sup>2</sup> | 3.2m height | 240 guests banquet
- Dong Do Room | 72m<sup>2</sup> | 3.2m height | 30 guests banquet



# Hanoi Accommodations



## MÖVENPICK HOTEL HANOI CENTRE 5\* LUXURY

### OVERVIEW

Located in Hanoi's central district, Mövenpick Hotel Hanoi Centre blends timeless French architecture with warm Vietnamese accents, offering a refined residential ambiance for both business and leisure travelers. With 155 thoughtfully appointed rooms, and gorgeous meeting venues for up to 200 guests—the hotel delivers upscale comfort and tailored event experiences in the heart of the capital.

### LOCATION

83A Ly Thuong Kiet Street, Ha Noi. City center.

### CAPACITY

155 Rooms (Classic, Premium, Deluxe, Executive) | 32m<sup>2</sup> - 62m<sup>2</sup>

### F&B OUTLETS

- Mangosteen Restaurant | All-day Dining | 110 seats
- O Macanese | Lunch & Dinner | 63 seats
- Lounge 83 | 07:00 - 23:30

### MEETING & EVENT

Satisfies intimate and private as well as indulgent and grand events:

- Long Bien Room | 238m<sup>2</sup> | 200 guests theater
- Dong Xuan Room | 105m<sup>2</sup> | 90 guests theater
- Quang Ba Room | 91m<sup>2</sup> | 80 guests theater



# Hanoi Accommodations



## NOVOTEL HANOI THAI HA 5\* DELUXE

### OVERVIEW

Ideally situated in central Hanoi, Novotel Hanoi Thai Ha provides seamless access to residential neighborhoods, academic institutions, business hubs, shopping districts, and cultural venues. Featuring 343 modern rooms and 11 flexible event spaces accommodating up to 400 guests, the hotel is a dynamic choice for conferences, corporate gatherings, and stylish social events.

### LOCATION

02 Thai Ha Street, Ha Noi. City center.

### CAPACITY

343 Rooms & Suites (Superior, Deluxe, Executive) | 31m<sup>2</sup> - 94m<sup>2</sup>

### F&B OUTLETS

- Food Exchange Restaurant | All-day Dining | 278 seats
- Premier Lounge | 06:00 - 22:30 | 134 seats
- The Rooftop Bar | 12:00 - 00:00 | 58 seats

### MEETING & EVENT

Ideal venues for MICE operations thanks to its modern infrastructure and strategic central location, with 10 meeting rooms and 01 grand ballroom:

- Thai Ha Grand Ballroom | 567m<sup>2</sup> | 5.1m height | 300 guests banquet
- FE Grand 1 | 131m<sup>2</sup> | 3m height | 69 guests banquet



# Hanoi Accommodations

## SOFITEL LEGEND METROPOLE

### 5\* LUXURY



#### OVERVIEW

Sofitel Legend Metropole Hanoi is a storied five-star luxury hotel in the heart of the Old Quarter, blending French colonial elegance with Vietnamese charm across 358 rooms in its Heritage and Opera Wings. Steps from Hoan Kiem Lake and the Opera House, it offers lush courtyards, an award-winning spa, and gourmet dining for travelers seeking timeless sophistication.

#### LOCATION

15 Ngo Quyen Street, Ha Noi. City center, steps away from the Old Quarter.

#### CAPACITY

358 Rooms & Suites including:

- Heritage Wing (relaunched 2023) | 103 Rooms & Suites | 32m<sup>2</sup> - 70m<sup>2</sup>
- Opera Wing | 255 Rooms & Suites | 32m<sup>2</sup> - 176m<sup>2</sup>

#### F&B OUTLETS

- Le Beaulieu Restaurant | Lunch & Dinner | 80 seats
- Le Club Bar | All-day Dining | 120 seats
- Angelina Restaurant | Lunch, Dinner, Happy-hour & late-night Bar | 60 seats
- Spice Garden Restaurant | All-day Dining | 80 seats
- La Terrasse | 07:00 - 22:00
- Bamboo Bar | 06:00 - 23:00

#### MEETING & EVENT

- Thang Long Room | 185m<sup>2</sup> | 3m height | 120 guests banquet
- La Veranda | 184m<sup>2</sup> | 2.8m height | 70 guests banquet
- Dong Do Room | 48m<sup>2</sup> | 2.8m height | 24 guests banquet
- Le Balcon (outdoor) | 87m<sup>2</sup> | 36 guests banquet



# MAI CHAU ACCOMMODATIONS



[auroratravel.asia](http://auroratravel.asia)



**A PEACEFUL VALLEY OF GREEN RICE FIELDS, STILT HOUSES, AND AUTHENTIC ETHNIC CHARM.**



# Mai Chau Accommodations



## AVANA RETREAT 5\*

### OVERVIEW

Avana Retreat—a luxury mountain resort, set across lush valleys and rice terraces—offers 36 elegant villas, four heated infinity pools, and one of Vietnam’s most scenic natural settings—ideal for high-end incentive travel and intimate corporate retreats. Unique experiences like private waterfall dining or yoga and meditation in ethnic cottages add to the immersive value. The resort stands out as a soulful, eco-conscious destination. seeking authenticity and exclusivity

### LOCATION

Panh Village, Mai Chau. Secluded, nature-immersed area.

### CAPACITY

36 Bungalows, Suites and Pool Villas | 98m<sup>2</sup> - 229m<sup>2</sup>

### F&B OUTLETS

- Green Chili Restaurant | All-day Dining | 138 seats
- Cloud Pool Bar | 07:00 - 22:00 | 56 seats
- Private dining options by the Pung Waterfall or Hidden Spring Lagoon

### MEETING & EVENT

No formal conference rooms. Avana offers bespoke event settings including private waterfall decks and hillside spaces.



# SAPA ACCOMMODATIONS



auroratravel.asia



**A HIGHLAND ESCAPE OF MISTY MOUNTAINS, VIBRANT HILL TRIBES, AND UNFORGETTABLE ADVENTURES.**



*Locals Know Best*



# Sapa Accommodations



## TOPAS ECOLODGE 5\*

### OVERVIEW

Topas Ecolodge is a serene mountain retreat nestled 900m high in Hoang Lien National Park, just 18km from Sapa, offering panoramic views of lush valleys and peaks. With its unique fusion of Scandinavian minimalism and ethnic charm, handcrafted granite bungalows, and a strong commitment to sustainable tourism—from organic gardens to plastic-free rooms and community-driven practices—it's a haven for eco-conscious travelers seeking comfort in nature.

### LOCATION

Lech Dao Village, Ban Ho Commune, Sa Pa. 45-minute drive to Sa Pa town.

### CAPACITY

50 Bungalows and Villas | 28.5m<sup>2</sup> - 60m<sup>2</sup> | built of white granite in the Tay people's traditional stilt house.

### F&B OUTLETS

- Restaurant 360° | Steakhouse | Breakfast & Dinner | 80 seats | 360° panoramic view
- Stilt House Restaurant | Vietnamese cuisine | All-day Dining | 100 seats
- Pavilion Restaurant | Grilled skewer menu | 18:00 - 21:00 | 20 seats
- Infinity Pool Bar | Light bites & drinks | 12:00 - 20:00
- Inn Bar | All kinds of drinks | 07:00 - 22:00

### MEETING & EVENT

This is a leisure-forward lodge, with minimal formal event infrastructure. Guests enjoy private hillside dinners.



# Sapa Accommodations

## HOTEL DE LA COUPOLE M GALLERY 5\*

### OVERVIEW

Hotel de la Coupole – MGallery brings 1920s French Indochine opulence to the heart of Sa Pa, where acclaimed architect Bill Bensley's bold design fuses vintage fashion with vibrant hill tribe motifs across 249 lavish rooms and suites. Located steps from the Fansipan cable car, it's a premier choice for luxury escapes, gourmet indulgence, and tailor-made events, complete with signature dining, rooftop cocktails, wellness retreats, and elegant banqueting spaces.

### LOCATION

01 Hoang Lien Street, Sa Pa. Sapa town center.

### CAPACITY

249 Rooms & Suites (Classic, Superior, Deluxe, Executive, President) | 33m<sup>2</sup> – 180m<sup>2</sup>

### F&B OUTLETS

- Chic Restaurant | French cuisine | All-day Dining
- Absinthe Bar (Rooftop) | 11:00 – 23:00
- Cacao Patisserie | Pastries & drinks | 10:00 – 18:00 (Fri-Sun)

### MEETING & EVENT

Biggest ballroom in town with high-tech facilities:

- Salon Des Grand Couturiers (10<sup>th</sup> floor) | 435m<sup>2</sup> | 8m height | 336 guests banquet | pilar less
- Meeting Room 3 (9<sup>th</sup> floor) | 218m<sup>2</sup> | 3.5m height | 168 guests banquet
- 02 boardrooms | 31-34m<sup>2</sup> | 3.5m height | 12-14 guests
- Outdoor venues upon requests: Chic Terrace, Hotel Courtyard



# NINH BINH ACCOMMODATIONS



[auroratravel.asia](http://auroratravel.asia)



**A JOURNEY THROUGH VIETNAM'S LIVING LEGACY**



# Ninh Binh Accommodations



## Emeralda Ninh Binh 4\*

### OVERVIEW

Set in Van Long Nature Reserve, Emeraldalda Ninh Binh blends lush landscapes with eco-luxury and Tonkin village charm. Its sustainable Vietnamese architecture offers modern comfort and serene surroundings. Ideal for corporate retreats, it features meeting spaces, custom catering, and vast outdoor lawns. Perfect for team-building or starlit gala dinners in nature's embrace.

### LOCATION

Van Long Nature Reserve, Gia Van, Ninh Binh.

### CAPACITY

172 Villas (Superior, Deluxe, Family Duplex) | 50m<sup>2</sup> - 107m<sup>2</sup>

### F&B OUTLETS

- Organic Restaurant | 10:00 - 22:00 | 120 seats
- Sen Restaurant | 06:00 - 22:00 | 250 seats
- Pool Bar | 09:00 - 22:00

### MEETING & EVENT

- Van Long Hall | 592m<sup>2</sup> | 450 guests banquet, high ceiling, pillar less
- Van Trinh Meeting Room | 220m<sup>2</sup> | 150 guests banquet
- Van Giang Hall | 100m<sup>2</sup> | 80 guests banquet



# Ninh Binh Accommodations



## Emeralda Tam Coc 4\*

### OVERVIEW

Located near Trang An Complex, the resort boasts stunning river views and direct access to Vietnam's iconic scenery. Its architecture reflects a luxurious Tonkin Maison, with high wooden ceilings and detailed carvings. Balanced symmetry and elegant design evoke the charm of aristocratic heritage. This is definitely a serene blend of cultural richness and natural beauty.

### LOCATION

Trang An Scenic Landscape Complex, Van Lam, Ninh Binh.

### CAPACITY

86 Rooms (Superior, Deluxe, Premium Deluxe) | 36m<sup>2</sup> - 88m<sup>2</sup>

### F&B OUTLETS

- Com Restaurant | Asian-Western dishes | All-day Dining | 250 seats
- Jade Bar | Light bites & snacks | 50 seats

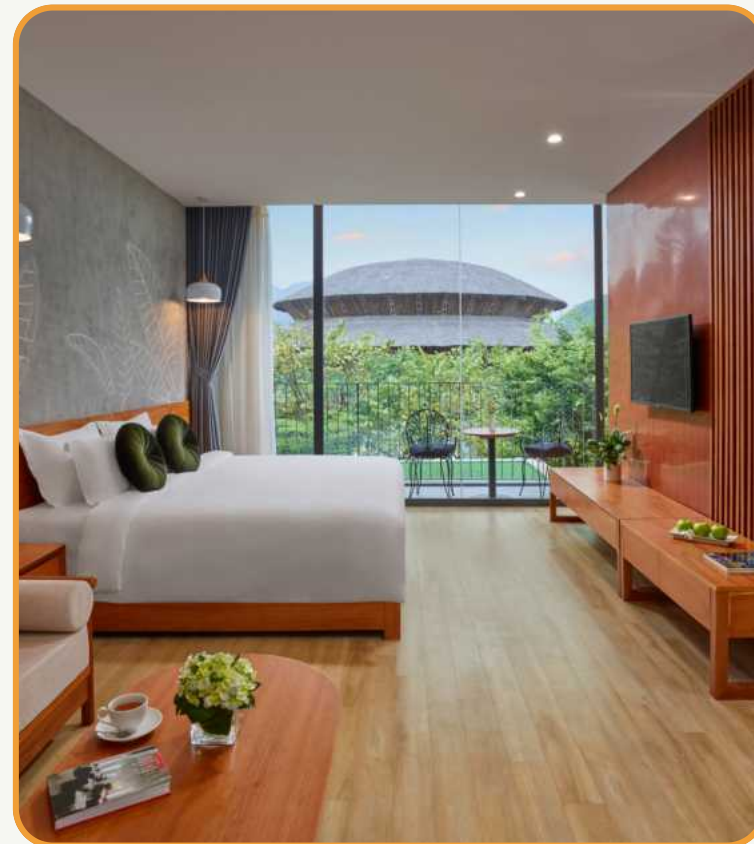
### MEETING & EVENT

05 spaces with the largest being:

- Hoa Lu Ballroom | 240m<sup>2</sup> | 120 guests banquet
- Wu Tong Meeting Room | 102m<sup>2</sup> | 60 guests banquet
- Poolside Area | 200m<sup>2</sup> | Up to 100 guests banquet



# Ninh Binh Accommodations



## Wyndham Grand Vedana Ninh Binh 5\*

### OVERVIEW

Nestled in Cuc Phuong Commune, the resort is framed by serene lakes, limestone peaks, and lush greenery. Its standout Bamboo Restaurant—crafted from 70,000 bamboo pieces—blends artistry with eco-luxury. Get ready to unwind in Vietnam's first lakefront bungalows or elegant villas, and seek for a tranquil escape where nature and design live in perfect harmony.

### LOCATION

Dong Tam Village, Cuc Phuong Commune, Ninh Binh.

### CAPACITY

173 Bungalows, Suites & Villas | 32m<sup>2</sup> - 250m<sup>2</sup>

### F&B OUTLETS

- Bamboo Restaurant | International cuisine | All-day Dining
- The Tre Café | 07:30 - 23:00 | 80 seats
- Melody Club | 08:30 - 23:00 | 40 seats

### MEETING & EVENT

03 conference rooms with the largest being 1,000m<sup>2</sup> | Up to 600 guests banquet | pillar less



# HA LONG ACCOMMODATIONS



auroratravel.asia



**THE BREATHTAKING UNESCO WORLD HERITAGE SITE**



*Locals Know Best*



# HA LONG Accommodations



## Capella Cruise 5\*

### OVERVIEW

Capella Cruise, a luxury superyacht blending modern design with Indochinese elegance, offers 30 spacious cabins with private balconies as well as ocean-view bathtubs, plus amenities like infinity pools, spa, mini-golf, and a Cigar & Poker Club. Opt to join diverse dining and activities including kayaking, swimming, and cooking demos. The itinerary highlights hidden gems like Ao Ech and Dark & Bright Cave for a more exclusive experience.

### CRUISE ROUTE

Lan Ha Bay

### CAPACITY

30 Suite cabins | 32m<sup>2</sup> - 92m<sup>2</sup>

### F&B OUTLETS

- Harmony Of The Sea Restaurant | 2<sup>nd</sup> floor | Up to 80 seats
- Spirit Of The Sea Lounge | 4<sup>th</sup> deck
- Open Sky Sundeck | 5<sup>th</sup> floor (top deck)



# HA LONG Accommodations



## Grand Pioneers Cruise 5\* Luxury

### OVERVIEW

Launched in 2022, Grand Pioneers Cruise offers eco-luxury voyages through Ha Long Bay with 55 elegant suites and top-tier amenities including a saltwater pool, spa, sky bar, and 3D golf. Sustainably designed, it features advanced green technology like Chiller air systems and water filtration for a guilt-free indulgent experience.

### CRUISE ROUTE

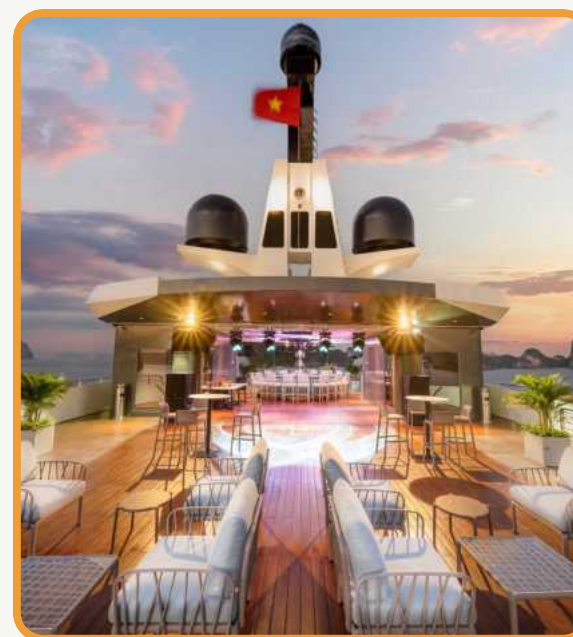
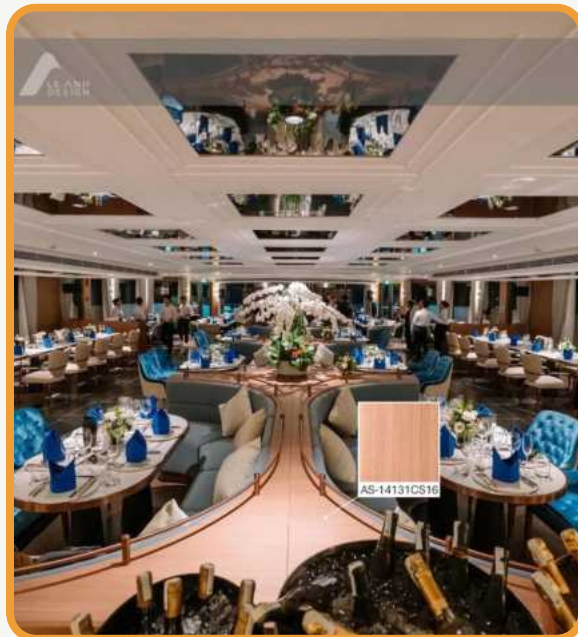
Ha Long Bay

### CAPACITY

55 Suite cabins | 30m<sup>2</sup> - 150m<sup>2</sup>

### F&B OUTLETS

- Dining By The Bay Restaurant | 06:30 - 22:00 | 160 seats
- Rhythm Of The Bay Bar | 16:00 - 23:00 | 160 seats
- Panorama Dining Room | 06:30 - 23:00 | 18 seats
- Four Seasons Pool Bar | 06:30 - 21:30
- Voyage Wine & Cigar Lounge | 08:00 - 24:00 | 05-07 seats



# HA LONG Accommodations



## Paradise Elegance Cruise 5\*

### OVERVIEW

Paradise Elegance is a modern luxury cruise launched in 2017, blending contemporary design with Vietnamese charm for refined journeys through Ha Long Bay. It features 31 spacious cabins with private balconies and upscale amenities, offering panoramic views of this UNESCO-listed landscape.

### CRUISE ROUTE

Ha Long Bay

### CAPACITY

31 Cabins & Suite | 25m<sup>2</sup> - 35m<sup>2</sup>

### F&B OUTLETS

- L' Odyssée Sundeck | 360m<sup>2</sup> | 60 seats
- Le Marin Restaurant | 07:00 - 22:00 | 90 seats
- Le Piano Lounge | 07:00 - 23:00 | 40 seats



# HA LONG Accommodations



## Paradise Grand Cruise 5\*

### OVERVIEW

Paradise Grand is Lan Ha Bay's premier luxury cruise, offering 39 elegant suites with private balconies, Michelin-starred dining, and top-tier amenities like a spa, sundeck, and open-air cinema. Its curated itineraries feature kayaking, Cat Ba hiking, village visits, Tai Chi, and live music for a rich cultural escape.

### CRUISE ROUTE

Lan Ha Bay

### CAPACITY

39 Cabins & Suite | 28m<sup>2</sup> - 35m<sup>2</sup>

### F&B OUTLETS

- La Espacia Restaurant | Eurasian culinary | 15:00 - 22:00 | 80 seats
- Piano Lounge | Drinks, Canapé | 10:00 - 22:00 | 40 seats
- Sundeck | 450m<sup>2</sup> | 120 seats



# HA LONG Accommodations



## La Regina Royal Cruise 5\*

### OVERVIEW

The cruise features beautifully crafted cabins with expansive windows or private balconies, offering panoramic views of Halong Bay. Royal and Princess Suites combine contemporary luxury with timeless Vietnamese aesthetics for a rich cultural experience.

### CRUISE ROUTE

Ha Long Bay

### CAPACITY

26 Suite cabins | 26m<sup>2</sup> - 52m<sup>2</sup>

### F&B OUTLETS

- The Grace Restaurant | 60 seats
- Top Deck Bar | 60 seats



# HA LONG Accommodations



## La Regina Legend Cruise 5\*

### OVERVIEW

La Regina Legend blends classic ocean liner elegance with modern luxury, featuring 27 suites with private balconies and sweeping bay views. From regal artwork to a wood-paneled library, every detail across its four decks invites guests to discover refined beauty and serene retreat.

### CRUISE ROUTE

Lan Ha Bay

### CAPACITY

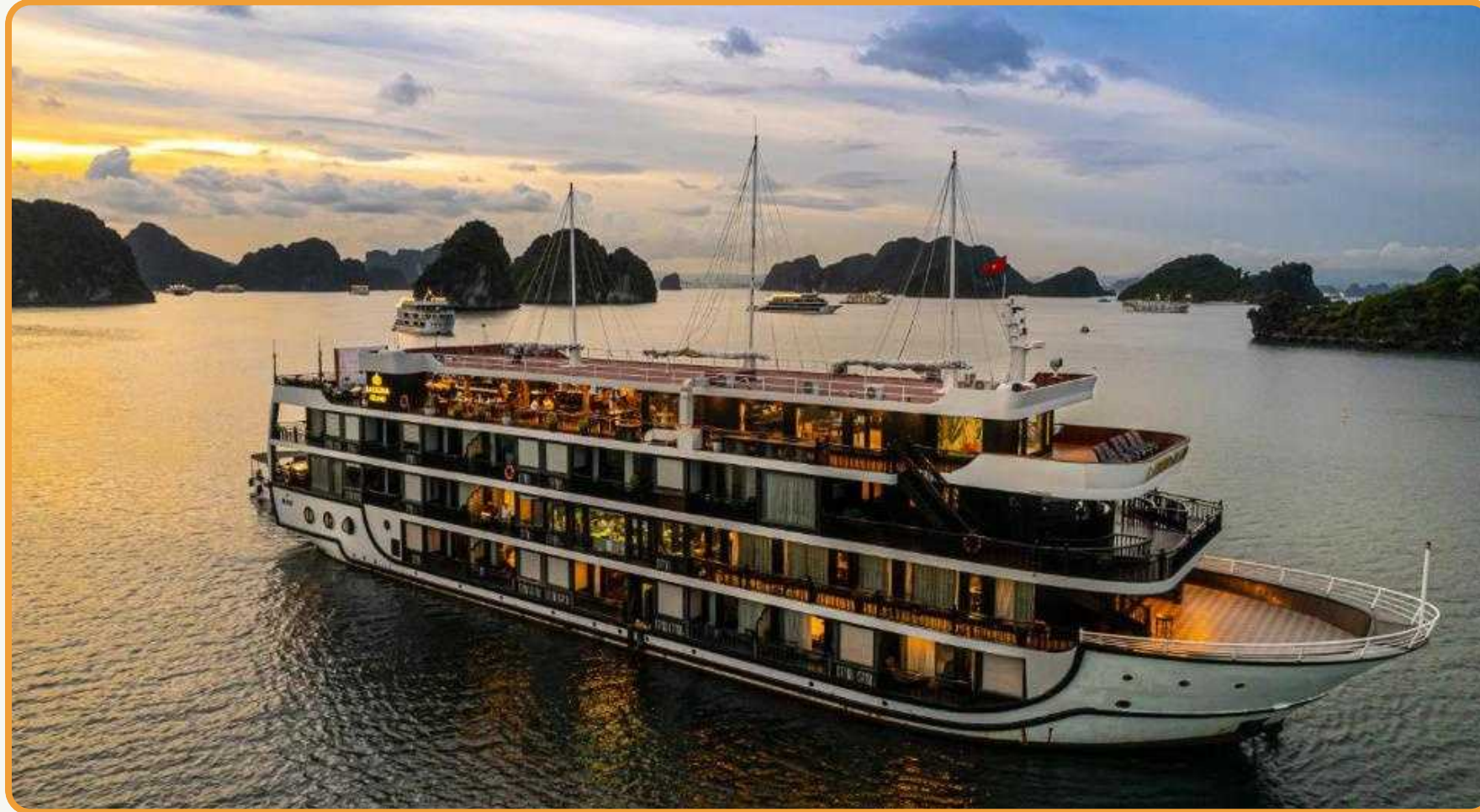
27 Suite cabins | 45m<sup>2</sup> - 135m<sup>2</sup>

### F&B OUTLETS

- La Corona Restaurant | 100 seats
- Le Magia Café | 50 seats



# HA LONG Accommodations



## La Regina Grand Cruise 5\*

### OVERVIEW

La Regina Grand evokes 1930s Indochina charm with 27 elegant suites featuring floor-to-ceiling windows and private balconies overlooking Lan Ha Bay. Each suite offers a serene blend of classic design and modern luxury, enhanced by personalized, impeccable service.

### CRUISE ROUTE

Lan Ha Bay

### CAPACITY

27 Suite cabins | 45m<sup>2</sup> - 135m<sup>2</sup>

### F&B OUTLETS

- Ha Long Restaurant | 100 seats
- Cat Ba Oasis Sundeck | 50 seats



# HA LONG Accommodations

## Indochine Premium Cruise 5\* Luxury



### OVERVIEW

Indochine Premium Ha Long offers colonial elegance across four decks with 37 intimate cabins featuring private balconies and freestanding bathtubs. Luxury amenities include a spa, gym, mini golf, pool, and a wine and cigar cellar—perfect for relaxing amid Ha Long Bay's stunning scenery.

### CRUISE ROUTE

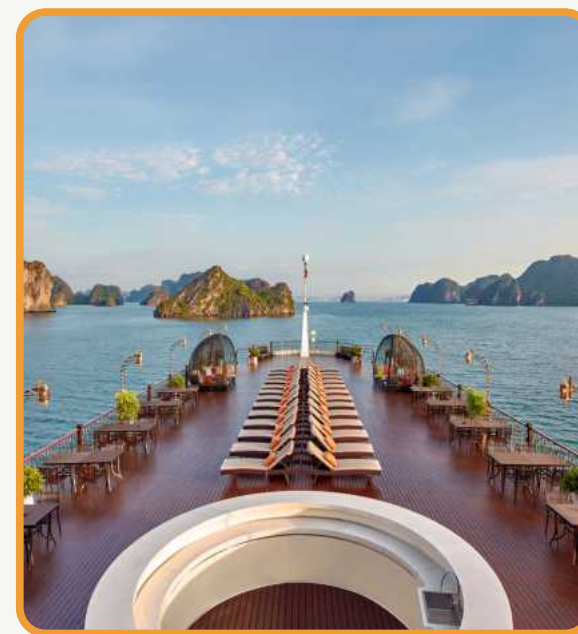
Ha Long Bay

### CAPACITY

37 Suite cabins | 34m<sup>2</sup> - 115m<sup>2</sup>

### F&B OUTLETS

- Indochine Restaurant | 350m<sup>2</sup> | 100 seats
- Cochinchine Lounge | 350m<sup>2</sup> | 80 seats
- Sky Lounge | 350m<sup>2</sup> | 100 seats
- Sundeck | 1,100m<sup>2</sup>



# HA LONG Accommodations



## Indochine Lan Ha Cruise 5\*

### OVERVIEW

Redesigned in 2023, Indochine Lan Ha Cruise features 45 oak-crafted cabins with private balconies and floor-to-ceiling windows, blending heritage charm with modern luxury. Guests enjoy a spacious sundeck, fine dining, exclusive lounges, and premium amenities while sailing through the scenic Lan Ha Bay.

### CRUISE ROUTE

Lan Ha Bay

### CAPACITY

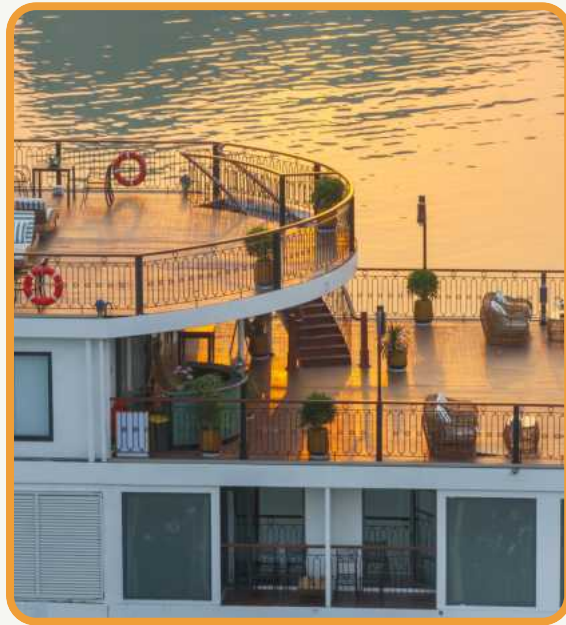
45 Suite cabins | private balcony | 32m<sup>2</sup> - 80m<sup>2</sup>

### F&B OUTLETS

- Tonkin Restaurant | 350m<sup>2</sup> | 100 seats
- An Nam Restaurant | 150m<sup>2</sup> | 70 seats
- Cochinchine Lounge | 350m<sup>2</sup> | 100 seats
- Sky Lounge | 250m<sup>2</sup> | 80 seats
- Sundeck | 1,100m<sup>2</sup>



# HA LONG Accommodations



## Indochine Grand Cruise 5\* Luxury

### OVERVIEW

Launched in February 2025, Indochine Grand offers 32 elegant cabins with natural wood finishes, private balconies, and panoramic windows for stunning Lan Ha Bay views. Blending colonial charm with modern luxury, this steel-hulled cruise delivers an intimate, artfully crafted escape backed by decades of expertise.

### CRUISE ROUTE

Lan Ha Bay

### CAPACITY

32 Suite cabins | private balcony | 28m<sup>2</sup> - 58m<sup>2</sup>

### F&B OUTLETS

- Restaurant | 180m<sup>2</sup> | 70 seats
- Lounge | 200m<sup>2</sup> | 70 seats
- Sky Deck | 450m<sup>2</sup> | 150 seats
- Infinity Deck | 300m<sup>2</sup> | 100 seats



# HA LONG Accommodations



## The Au Co Cruise 5\*

### OVERVIEW

Refurbished in June 2024, the steel-hulled Au Co Cruise sails gracefully through Halong and Lan Ha Bays, blending modern elegance with the legend of Princess Au Co. Its twin ships offer refreshed cabins with contemporary Asian design, preserving the vessel's signature sophistication.

### CRUISE ROUTE

Lan Ha Bay

### CAPACITY

32 cabins & Suite | 20m<sup>2</sup> - 40m<sup>2</sup>

### F&B OUTLETS

- The Terrace Deck Restaurant | 80 seats
- Sundeck | 80 seats
- Bar | 40-50 seats



Thank You



**Head Office:** VINARE Building, Le Duan St., Cua Nam ward, Hanoi, Vietnam  
Tel: +84 24 3747 2597 | [www.auroratravel.asia](http://www.auroratravel.asia) | [mice@auroratravel.asia](mailto:mice@auroratravel.asia)