



CAMBODIA

HOTELS



TABLE OF CONTENTS



auroratravel.asia



SIEM REAP ACCOMMODATIONS

PHOM PENH ACCOMMODATIONS

SIHANOUK-VILLE ACCOMMODATIONS



SIEM REAP ACCOMMODATIONS



auroratravel.asia



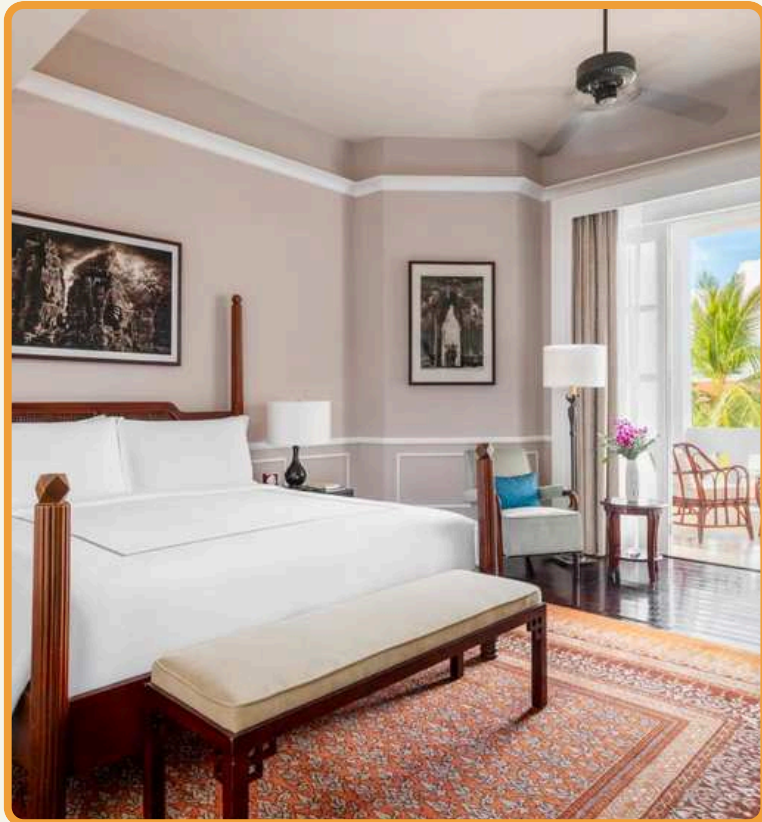
THE BLEND OF ANCIENT HISTORY, RICH CULTURE, AND BUSTLING MARKETS



The Locals Know Best



Siem Reap Accommodations



RAFFLES GRAND HOTEL D' ANGKOR 5* LUXURY

OVERVIEW

Opened in 1932, Raffles Grand Hotel d'Angkor is one of Southeast Asia's most storied hotels, blending colonial-era elegance with modern luxury. Located just moments from Angkor Wat and the Old Market, the property offers 119 spacious rooms and suites featuring high ceilings, classic hardwood floors, and period furnishings.

LOCATION

Vithei Charles de Gaulle, Khum Svay Dang Kum, Angkor, 1010 Siem Reap, Cambodia

NUMBER OF ROOMS: 119 ROOMS

- State Rooms – Elegant spaces with garden or pool views.
- Landmark Rooms – Preserving original 1930s charm with restored vintage touches.
- Suites – Expansive layouts with separate living areas, ideal for longer stays.
- Villas – Private accommodations with enhanced luxury and exclusivity.



Siem Reap Accommodations



RAFFLES GRAND HOTEL D' ANGKOR 5* LUXURY

F&B OUTLETS

- 1932 – Fine dining with a focus on Khmer and French fusion cuisine.
- Café d'Angkor – All-day dining with international and local flavors.
- Elephant Bar – Iconic colonial-style bar known for signature cocktails.
- Poolside Terrace – Light bites and refreshments by the pool.

MEETING & EVENT

- Le Grand Meeting Room (~861 sq ft / 80 m²)
 - Theater: 120
- Café d'Angkor (~1,206 sq ft / 112 m²)
 - Theater setup for up to 100 guests

Outdoor & Terrace Venues

- Apsara Terrace (~3,315 sq ft / 308 m²)
 - Capacity: 250
- Poolside Terrace (~5,038 sq ft / 468 m²)
 - Capacity: 450
- Royal Garden – Intimate outdoor space
 - Capacity: 250 guests



Siem Reap Accommodations



ZANNIER PHUM BAITANG

OVERVIEW

Nestled in 20-acres of lush gardens and rice paddy fields, the hotel and “green village” sits on the threshold of UNESCO World Heritage Site Angkor Wat. Inspired by Khmer architecture, 45 private terrace and pool villas are styled like traditional stilted farmhouses, while Spa Temple treatment menus embrace centuries-old local wellness practices.

LOCATION

44 Sothearos Blvd, Daun Penh, Phnom Penh

CAPACITY: 45 PRIVATE STILTED VILLAS

- 25 Terrace Villas (~60 sqm) with spacious outdoor terraces
- 20 Pool Villas (~72 sqm) with private 20 sqm plunge pools and garden salas



Siem Reap Accommodations



ZANNIER PHUM BAITANG

F&B OUTLETS

- Bay Phsar: All-day dining with panoramic views of rice paddies; offers Khmer specialties and Western dishes
- Hang Bay: Evening fine-dining restaurant with a fusion of international and Cambodian dishes (e.g. turmeric tofu, sea bass, river prawn)
- Sunset Lounge: A restored colonial-style farmhouse offering cocktails, vintage liqueurs, and scenic views at dusk
- Pool Bar: Casual drinks and light bites beside the 50 m infinity pool

MEETING & EVENT

Indoor Meeting Room:

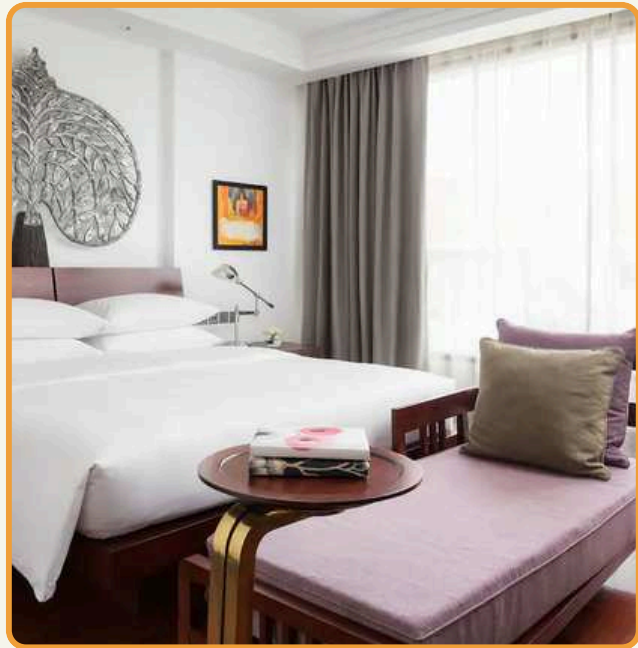
- Capacity: ~20–30 people (boardroom/classroom setup)
- Private, air-conditioned, suitable for intimate or high-level discussions.

Outdoor Event Areas:

- Capacity: Up to 80 guests
- Venues include areas near the infinity pool, garden, and restaurant terrace, suitable for receptions or networking dinners.



Siem Reap Accommodations



PARK HYATT SIEM REAP 5* LUXURY

OVERVIEW

Nestled in 20-acres of lush gardens and rice paddy fields, the hotel and “green village” sits on the threshold of UNESCO World Heritage Site Angkor Wat. Inspired by Khmer architecture, 45 private terrace and pool villas are styled like traditional stilted farmhouses, while Spa Temple treatment menus embrace centuries-old local wellness practices.

LOCATION

Sivutha Boulevard, Siem Reap, Cambodia

CAPACITY: 104 ROOMS

- Park Room – 35 m², king or twin beds, garden/city views.
- Park Deluxe – 54 m², larger living space, garden/pool views.
- Park Suite – 71 m², separate living room, garden views.
- Park Executive Suite – 120 m², dining & living areas, courtyard views.
- Rooftop Garden Suite – 152 m², private terrace, plunge pool, city views.
- Two-Bedroom Pool Suite – 182 m², private pool, two bedrooms, spacious living/dining.



Siem Reap Accommodations



PARK HYATT SIEM REAP 5* LUXURY

F&B OUTLETS

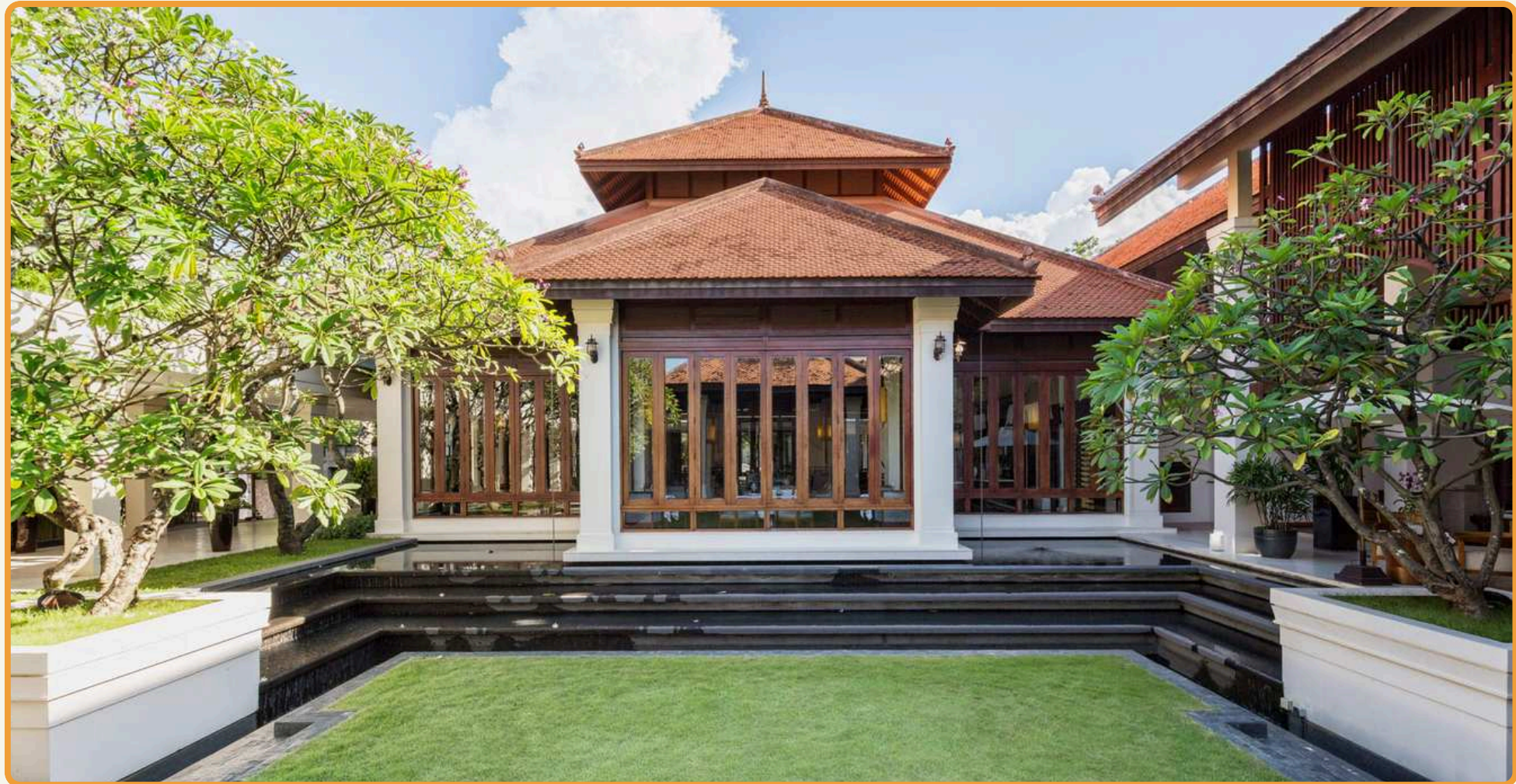
- The Dining Room: Signature restaurant serving French-Indochine cuisine and elegant Khmer-inspired set menus.
- The Living Room: Lounge and bar perfect for evening cocktails, light lunches, and high tea.
- The Glasshouse Deli-Patisserie: Delightful café for artisan pastries, teas, and casual light fare.

MEETING & EVENT

- The Gallery I (~98 m² / 70 theatre) and Gallery II (~36 m² / boardroom 14) — ideal for small to medium gatherings. These venues offer natural light and modern tech support.
- The Boardroom: A refined space in dark-wood décor, fitted with advanced AV equipment—perfect for executive sessions.
- Outdoor Events: The serene courtyard is perfect for open-air receptions, cultural performances, or themed dinners like temple evenings.



Siem Reap Accommodations



ANANTARA ANGKOR RESORT

F&B OUTLETS

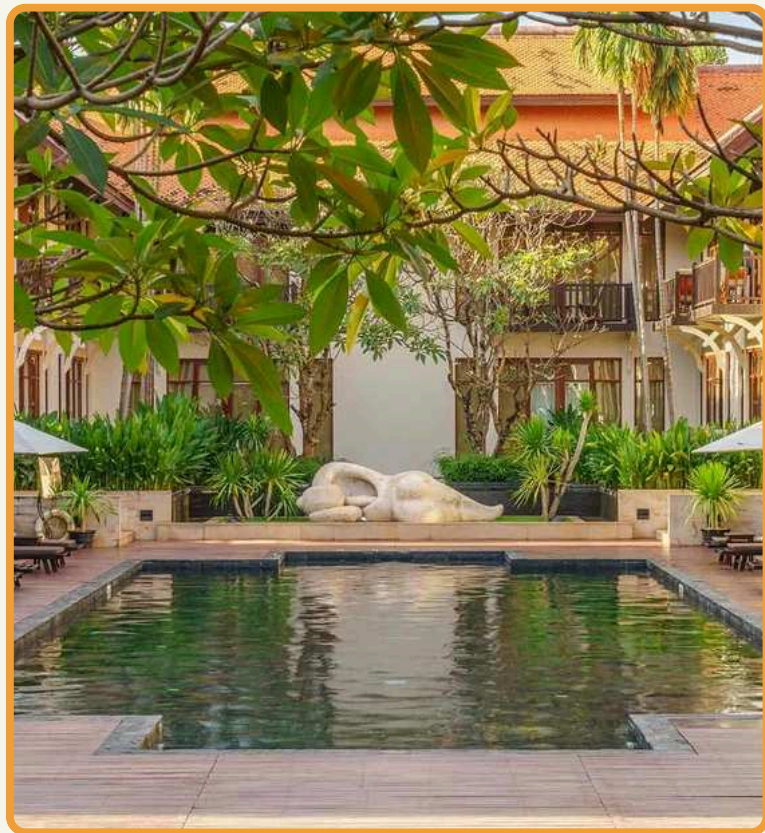
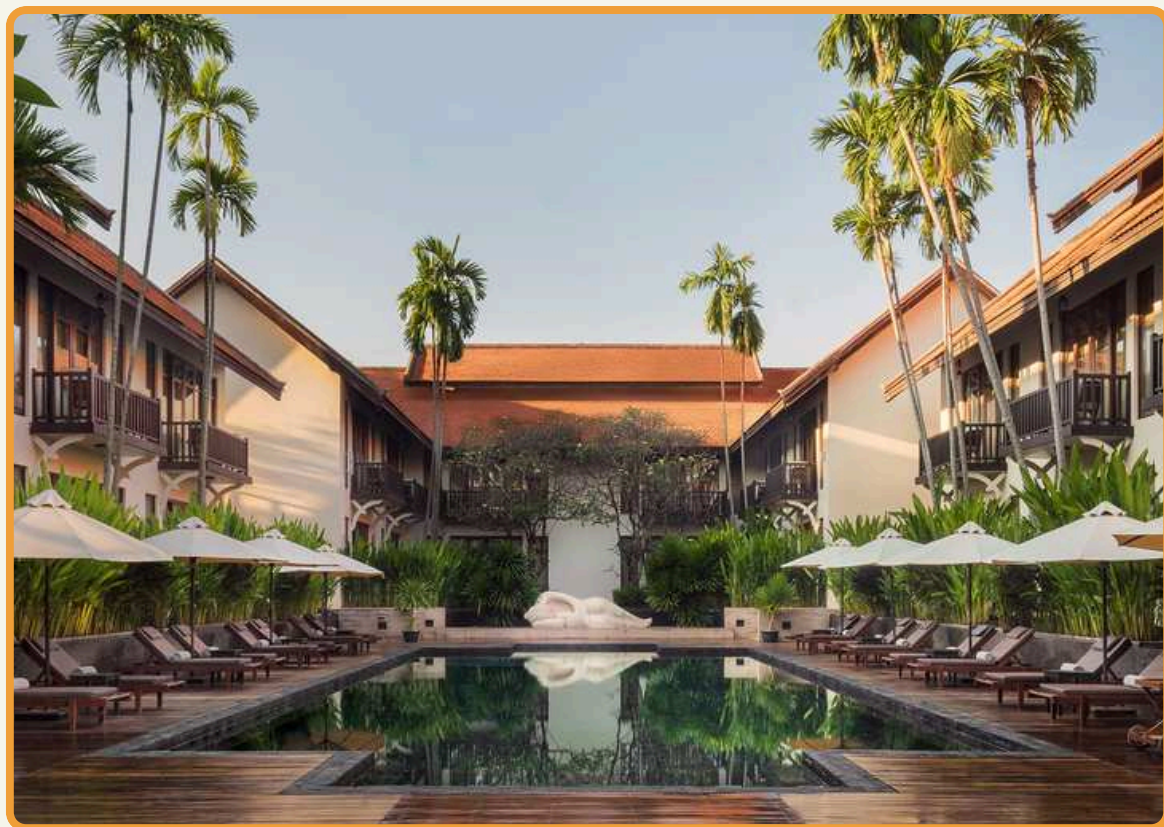
- Chi Restaurant & Bar – Serving elevated Khmer and global fusion cuisine for breakfast, lunch, and dinner in an elegant setting overlooking the garden
- L Lounge & Salt Pool Bar – Light meals, signature cocktails and snacks by the pool area, serving until late afternoon
- Dining by Design – Bespoke private dining experiences arranged in unique locations on site upon request
- In-room Dining, Cooking Classes (Spice Spoons) and local culinary experiences available

MEETING & EVENT

- Chi Restaurant – Indoor venue for meetings or private functions
- Capacity: up to 90 guests (theatre), 60 (classroom/banquet)
- Road 6 Bar/Lounge – Ideal for small social gatherings or casual sessions
- Capacity: up to 30 guests (theatre), 20 (cocktail), 16 (banquet)
- Conference Room – Private boardroom for small meetings
- Capacity: up to 25 guests (theatre), 12 (classroom/boardroom)
- Courtyard – Outdoor setting for cocktail receptions
- Capacity: up to 80 guests
- Pool Terrace – Scenic outdoor area
- Capacity: up to 60 guests (cocktail setup)



Siem Reap Accommodations



ANANTARA ANGKOR RESORT

OVERVIEW

Anantara Angkor is a boutique all-suite luxury retreat situated about 15 minutes from Angkor Wat and 10 minutes from Siem Reap town center. The resort features 39 individually designed suites arranged around a serene courtyard pool, blending classic Khmer architecture with modern comforts. Upon arrival, guests are greeted with traditional Khmer foot rituals, refreshing welcome drinks, and a special Krama scarf by a dedicated Experience Butler.

LOCATION

ity, Phum Krous, Anantara Angkor Resort, 64 National Road 06, 17252, Campuchia

NUMBER OF ROOMS:39 SUITES

- Suite (6 King, 3 Twin) (46m2)
- Premier Suite (4 King, 4 Twin) (51m2)
- Terrace Suite (6 King, 2 Twin) (54m2)
- Premier Terrace Suite (4 King, 4 Twin) (58m2)
- Anantara Suite (2 King) (78m2)
- Sothea Suite (2 King) (112m2)
- Anantara Explorer Suite (1 King) (178m2)
- Henri Mouhot Two Bedroom Suite (2 King) (253m2)
- Family Suite (1 King, 1 Twin) (163m2)
- Family Pool Suite (2 King) (253m2)



Siem Reap Accommodations



SOFITEL ANGKOR PHOKEETHRA GOLF & SPA - ACCOR GROUP 5* LUXURY

OVERVIEW

Sofitel Angkor Phokeethra is a luxurious five-star resort in the heart of Siem Reap, Cambodia, renowned for its French colonial elegance, serene gardens, and world-class service. It blends Khmer heritage with contemporary sophistication, offering upscale accommodation, fine dining, spa and golf facilities, and extensive MICE amenities

LOCATION

Vithei Charles de Gaulle, Khum Svay Dang Kum, Angkor, 1010 Siem Reap, Cambodia

NUMBER OF ROOMS: 238 ROOMS

- 136 Superior (Twin, King, Triple) (36m2)
- 88 Luxury (Twin, King, Triple) (46m2)
- 6 Junior Suite (Twin, King) (70m2)
- 8 Prestige Suite (Twin, King) (90m2)
- 1 Opera Suite (1 King & 1 Twin) (140m2)



Siem Reap Accommodations



SOFITEL ANGKOR PHOKEETHRA GOLF & SPA - ACCOR GROUP 5* LUXURY

F&B OUTLETS

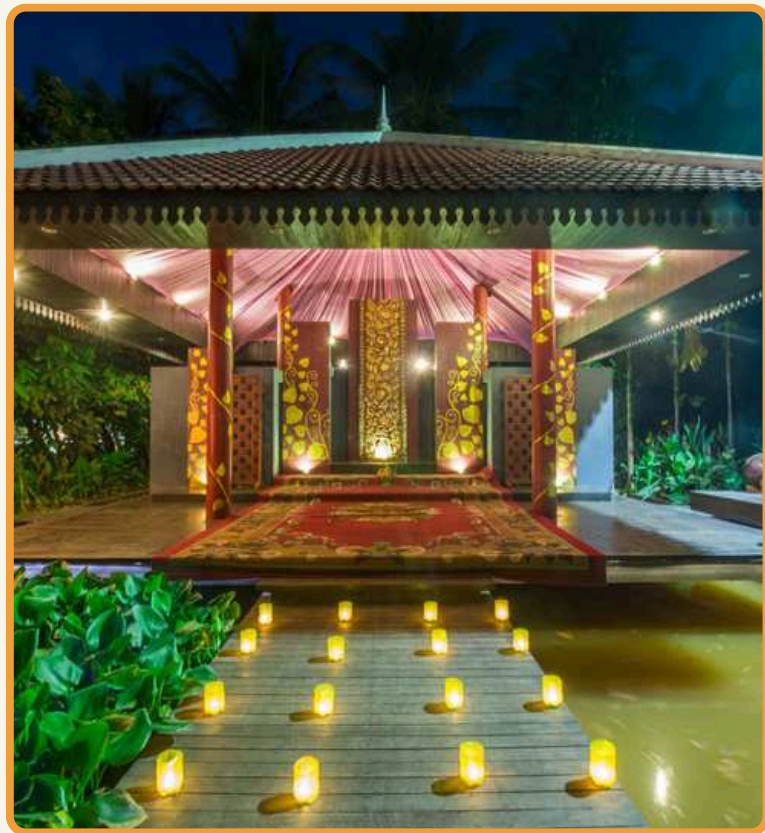
- The Citadel – Garden-view restaurant serving eclectic Western and Asian cuisine buffet-style, with occasional Khmer dance performances
- Mouhot's Dream – Romantic lakeside French fine-dining, ideal for an upscale evening or wine dinner
- Explorer's Tales Bar – Colonial-style lobby lounge offering cocktails, spirits, and light fare—all-day operation.
- Serpent Bar – Poolside bar for light meals and diverse cocktails, relaxing daytime
- The Sanctuary (Wine Room) – Intimate venue next to the Lobby Bar with curated wine selections and canapé menus, ideal for private dinners and business gatherings

MEETING & EVENT

- Phokeethra Ballroom (450 m²):
- Up to 600 guests (cocktail), 240 (banquet), with high ceilings and full AV setup. Ideal for large conferences or gala dinners.
- Naga & The Rainbow Rooms (100 m² each):
- Flexible mid-size spaces with natural light, suitable for 30–50 pax in various setups. Can be combined.
- The W Room (76 m²):
- Elegant space for small seminars or private dining (up to 60 pax theatre-style).
- Executive Boardroom (28 m²):
- Private, fully equipped for high-level meetings (up to 12 pax).
- Sofitel Poolside (Outdoor Venue):
- Lush garden setting for banquets (up to 400) and cocktails (up to 500).



Siem Reap Accommodations



ANGKOR PALACE RESORT & SPA 5* DELUXE

OVERVIEW

A luxury five-star retreat set on National Road 6, approximately 7 km from Siem Reap Airport and Angkor Wat, nestled in the former royal capital of Cambodia. Embraces royal Khmer hospitality, blending classic Angkorian architecture with modern comfort across 188 guestrooms and suites.

LOCATION

0369 NR6, Krong Siem Reap 17252, Campuchia

NUMBER OF ROOMS: 188 ROOMS

- Deluxe (28 double, 18 twin) (40m2)
- Landmark (65 double, 46 twin, 7 triple) (47m2)
- Junior Suite (50m2)
- Club Suite (65m2)
- Borei Suite (65m2)
- Royal Suite (188m2)



Siem Reap Accommodations



ANGKOR PALACE RESORT & SPA 5* DELUXE

F&B OUTLETS

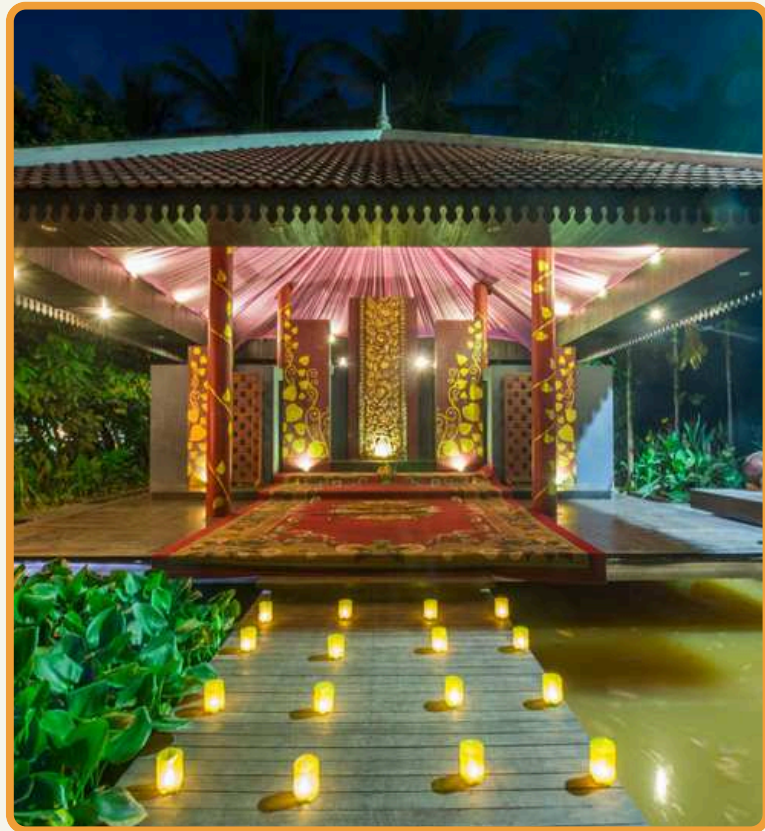
- Bakan Restaurant: Pool- and garden-facing venue serving Khmer and international cuisine; available for buffet and à la carte meals
- Ox Club Siem Reap: Fine-dining restaurant specializing in Cambodian haute cuisine (reservation required)
- Borei Café: Casual daytime café offering light bites and drinks
- Aha Rosil: Poolside restaurant with alfresco menu and snacks (weather-permitting)

MEETING & EVENT

- Grand Ballroom (435 sqm): Accommodates up to 400 guests – ideal for conferences, gala dinners, and large-scale events.
- Bokor Ballrooms I & II (171–204 sqm): Flexible spaces for 60–150 guests, suitable for workshops, seminars, and banquets.
- Breakout Rooms: Smaller meeting spaces for 12–20 participants, ideal for private board meetings or support functions.
- Outdoor Spaces: Garden and pool terrace available for cocktail receptions up to 80 guests.
- Event Services: Full AV support, staging, customizable catering, and a dedicated planning team.
- Unique Offerings: Curated Temple Dining experiences within the Angkor complex for luxury or incentive groups.



Siem Reap Accommodations



BOREI ANGKOR RESORT & SPA 5* DELUXE

OVERVIEW

A luxury five-star retreat set on National Road 6, approximately 7 km from Siem Reap Airport and Angkor Wat, nestled in the former royal capital of Cambodia. Embraces royal Khmer hospitality, blending classic Angkorian architecture with modern comfort across 188 guestrooms and suites.

LOCATION

0369 NR6, Krong Siem Reap 17252, Campuchia

NUMBER OF ROOMS:188 ROOMS

- Deluxe (28 double, 18 twin) (40m2)
- Landmark (65 double, 46 twin, 7 triple) (47m2)
- Junior Suite (50m2)
- Club Suite (65m2)
- Borei Suite (65m2)
- Royal Suite (188m2)



Siem Reap Accommodations



BOREI ANGKOR RESORT & SPA 5* DELUXE

F&B OUTLETS

- Bakan Restaurant: Pool- and garden-facing venue serving Khmer and international cuisine; available for buffet and à la carte meals
- Ox Club Siem Reap: Fine-dining restaurant specializing in Cambodian haute cuisine (reservation required)
- Borei Café: Casual daytime café offering light bites and drinks
- Aha Rosil: Poolside restaurant with alfresco menu and snacks (weather-permitting)

MEETING & EVENT

- Grand Ballroom (435 sqm): Accommodates up to 400 guests – ideal for conferences, gala dinners, and large-scale events.
- Bokor Ballrooms I & II (171–204 sqm): Flexible spaces for 60–150 guests, suitable for workshops, seminars, and banquets.
- Breakout Rooms: Smaller meeting spaces for 12–20 participants, ideal for private board meetings or support functions.
- Outdoor Spaces: Garden and pool terrace available for cocktail receptions up to 80 guests.
- Event Services: Full AV support, staging, customizable catering, and a dedicated planning team.
- Unique Offerings: Curated Temple Dining experiences within the Angkor complex for luxury or incentive groups.



PHOM PENH ACCOMMODATIONS



auroratravel.asia



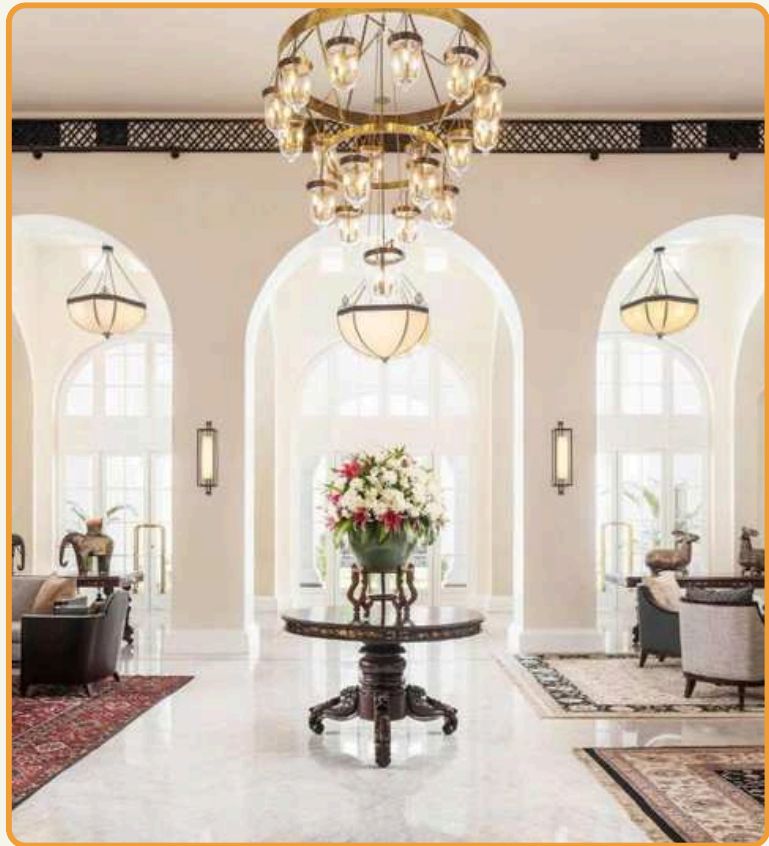
THE BLEND OF ANCIENT HISTORY, RICH CULTURE, AND BUSTLING MARKETS



The Locals Know Best



PHOM PENH Accommodations



RAFFLES HOTEL LE ROYAL 5* LUXURY

OVERVIEW

Founded in 1929 and reimagined by Raffles in 1997, Raffles Hotel Le Royal is a historic landmark blending French colonial, Khmer, and Art Deco influences. It stands as Phnom Penh's most iconic luxury hotel, offering elegant hospitality in the city center near the Royal Palace and riverfront

LOCATION

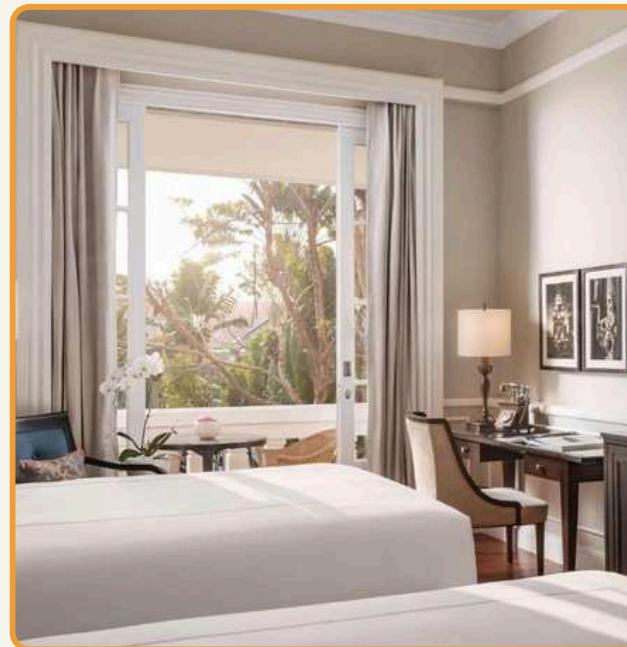
92 Rukhak Vithei Daun Penh, Sangkat Wat Phnom, Phnom Penh, Cambodia

NUMBER OF ROOMS: 175 ROOMS

- State & Landmark Rooms: ~32–33 m², colonial charm, marble bathrooms, garden or pool views.
- Colonial/Balcony Suites: ~40 m², living area, vintage design, private balcony.
- Personality Suites: ~48 m², themed after famous guests (e.g., Jackie Kennedy).
- Executive & Royal Suites: Up to 228 m², multiple rooms, premium service, historic décor.



PHOM PENH Accommodations



RAFFLES HOTEL LE ROYAL 5* LUXURY

F&B OUTLETS

Restaurant Le Royal

- Located under a stunning hand-painted ceiling, this elegant dining venue serves Royal Khmer recipes decreed by the Cambodian Royal Palace alongside modern Khmer cuisine. Tableside guéridon service adds to the refined experience
- Dinner: Tuesday–Sunday, 18:30–22:30 | Sunday Brunch: 12:00–15:00.

Le Phnom 1929

- French-style brasserie offering an open kitchen, signature cocktails, and the “Around the World in 80 Wines” program. Perfect for brunch, casual lunch, or drinks in a lively setting

Elephant Bar

- Iconic cocktail lounge known for its Femme Fatale cocktail (created for Jacqueline Kennedy, 1967) and one of Asia’s largest gin collections. Live piano music every evening, with Happy Hour daily, 17:00–19:00

Poolside Terrace

- A shaded oasis under frangipani trees beside the pool, serving cocktails, light meals, and tapas—ideal for relaxed afternoons or informal refreshments .

MEETING & EVENT

- Royal Ballroom: ~500 m², theatre-style seating for up to 440, banquet for 200 guests.
- Empress Room: ~222 m², cinema-style for 110, banquet for 150 guests.
- Restaurant Le Royal: ~345 m², capacity ~100, ideal for private dining.
- Crystal Room: ~95 m², capacity 40 (theatre), 50 (reception), for meetings up to 30 guests



PHOM PENH Accommodations



ROSEWOOD PHNOM PENH 5* LUXURY

OVERVIEW

Occupying the top 14 floors of Vattanac Capital Tower, Rosewood Phnom Penh delivers unparalleled views, ultra-luxurious venues, and bespoke service for high-profile meetings and incentives. From sleek boardrooms to glamorous ballrooms and sky lounges, every space is designed for impact. With award-winning dining, curated cultural experiences, and a prime central location, it sets the stage for extraordinary corporate gatherings in Cambodia’s capital.

LOCATION

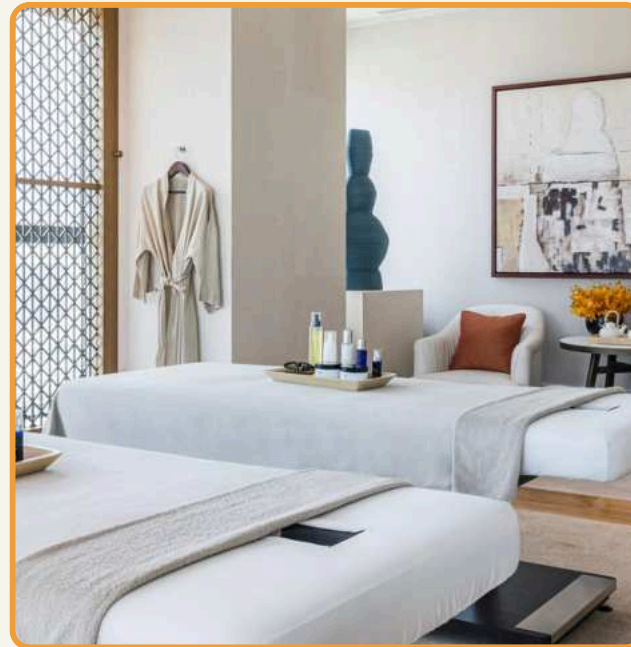
Vattanac Capital Tower, 66 Monivong Boulevard, Phnom Penh

NUMBER OF ROOMS: 175 ROOMS

- Executive Room 60 units
- Premier River Room 64 units
- Grand Premier Room 14 units
- Mekong Suite 13 units
- Manor Suite 14 units
- Rosewood Suite 8 units
- Monivong House 1 unit
- Norodom House 1 unit



PHOM PENH Accommodations



ROSEWOOD PHNOM PENH 5* LUXURY

F&B OUTLETS

- * Brasserie Louis restaurant: All-day dining, located on level 35
- * Living Room: breakfast only
- * Iza restaurant: Located on level 37, the izakaya-style dining space
- * Cuts restaurant: Located on level 38, the high-energy steak and seafood restaurant
- * Zhan Liang: Chinese restaurant

MEETING & EVENT

- Salons (Floor 36)
- Salon I (282 m²): 270 pax
- Salon II (227 m²): 230 pax
- Salon III (111 m²): 94 pax



PHOM PENH Accommodations



SOFITEL PHNOM PENH PHOKEETHRA

OVERVIEW

Nestled on Sothearos Boulevard by the riverside in the Old Quarter of Phnom Penh, Sofitel Phnom Penh Phokeethra blends French-colonial architecture with modern luxury in lush tropical surroundings. It's just a short walk from the Royal Palace, National Museum, Independence Monument, and AEON Mall. The property features 201 rooms and 35 suites, surrounded by landscaped gardens over several hectares.

LOCATION

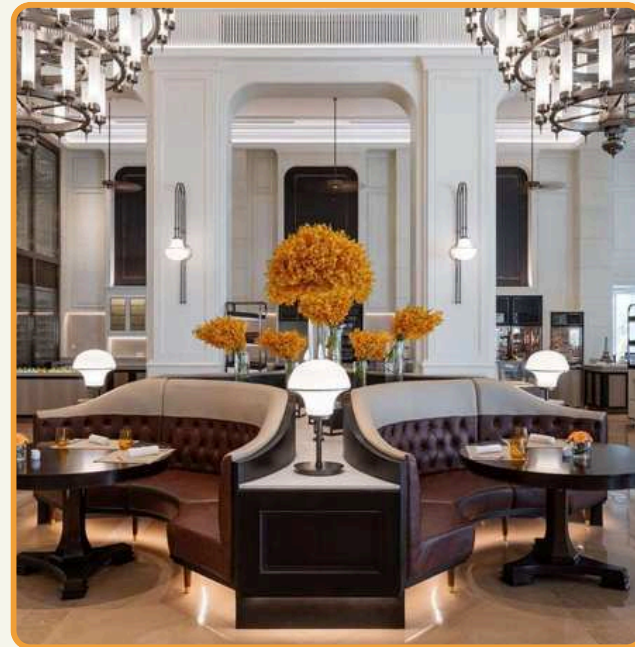
26 Old August Site, Sothearos Boulevard,
Sangkat Tonle Bassac, Phnom Penh 12301, Cambodia

NUMBER OF ROOMS: 201 ROOMS

- Superior Room (~40 m²): City or river views, Nespresso machine, Lanvin toiletries
- Luxury Room (~47 m²): Spacious with balcony, river or garden views.
- Club Millésime & Suites: Includes Junior Family, Prestige, Opera suites—ideal for families and luxury travelers with access to Club lounge



PHOM PENH Accommodations



SOFITEL PHNOM PENH PHOKEETHRA

F&B OUTLETS

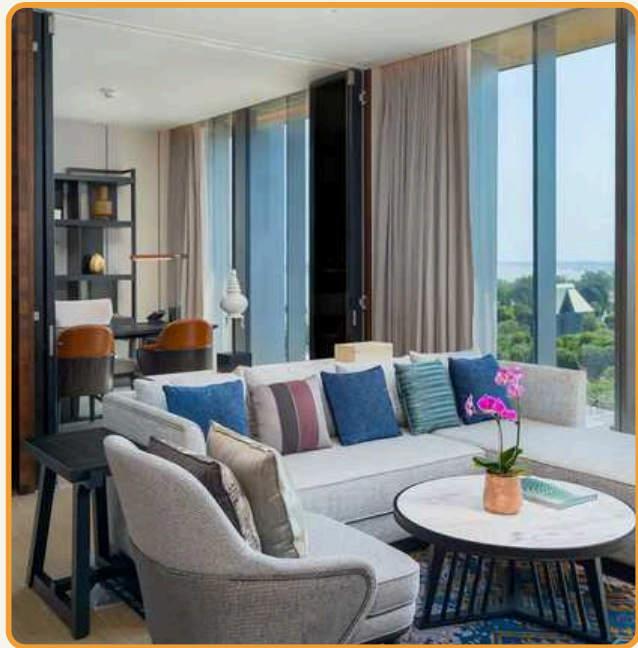
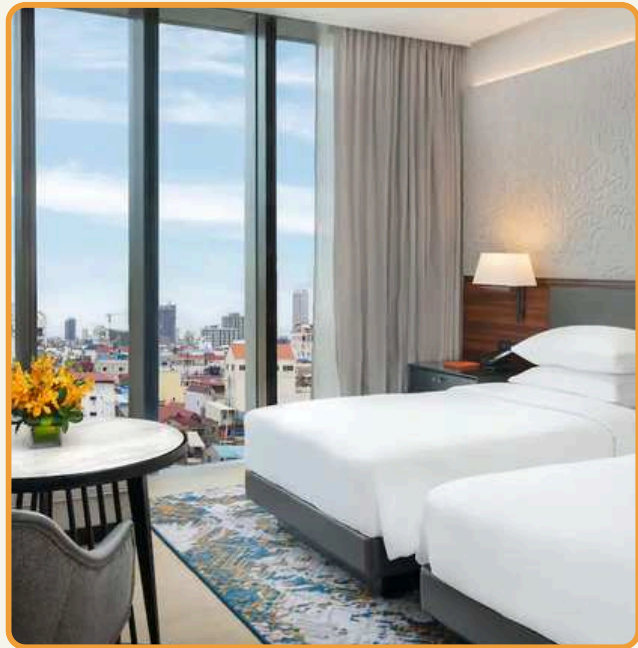
- La Coupole: French brasserie with live cooking stations and Sunday brunch featuring seafood and lobster.
- Do Forni: Intimate Italian dining with open kitchen.
- Fu Lu Zu: Elegant Chinese cuisine and dim sum.
- Hachi: Japanese restaurant serving sushi and fusion dishes.
- Le Bar: Cocktail bar for pre-dinner drinks in refined ambiance.
- Club Millésime: Exclusive lounge for club-level guests.
- Phokeethra Sports Bar: Post-workout healthy meals and drinks.
- Champagne Boutique & Cigar Chamber: Luxe experiences for connoisseurs

MEETING & EVENT

- Grand Ballroom: 1,430 m² space for up to 1,600 guests (theatre), or 1,100 banquet; 9 m ceiling and full LED wall-screen (5×9 m) technology
- Ballroom One (~855 m²): Suitable for 650 in theatre, 370 banquet.
- Ballroom Two (~575 m²): Capacity 500 theatre, 400 banquet
- Phokeethra Meeting Rooms 1–5 (34–147 m²): Ideal for board meetings, training, breakout sessions. Phokeethra One (~147 m²) fits up to 126 in theatre; Phokeethra Five (~34 m²) fits 24 theatre or 14 boardroom
- Phokeethra Sky: On 12th floor, city-view meeting/dining room for up to ~70 guests



Phnom Penh Accommodations



HYATT REGENCY PHNOM PENH 5* DELUXE

OVERVIEW

Hyatt Regency Phnom Penh is an ideal venue for upscale corporate events or luxury leisure stays. It blends modern amenities with heritage charm, offers extensive and versatile meeting spaces, excellent dining options, and sustainable hospitality in a central location.

LOCATION

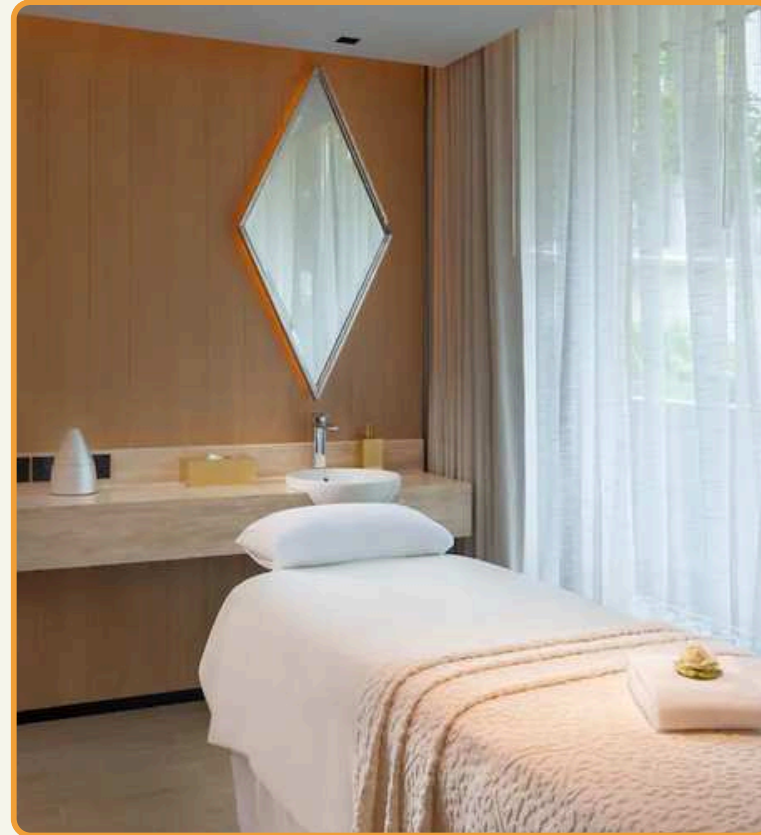
No. 55, Street 178, Sangkat Chey Chumnas, Khan Doun Penh, Phnom Penh, Cambodia

NUMBER OF ROOMS: 247 ROOMS

- Standard Rooms: King or Twin beds, 35–40 m², city/courtyard views
- Deluxe Rooms: Larger layout, higher floors, enhanced views
- Regency Club Rooms: Includes lounge access, breakfast, evening drinks
- Suites:
 - 1-Bedroom, Balcony, and Colonial Suites
 - 2-Bedroom Executive Suite (up to 135 m²)



Phom Penh Accommodations



HYATT REGENCY PHNOM PENH 5* DELUXE

F&B OUTLETS

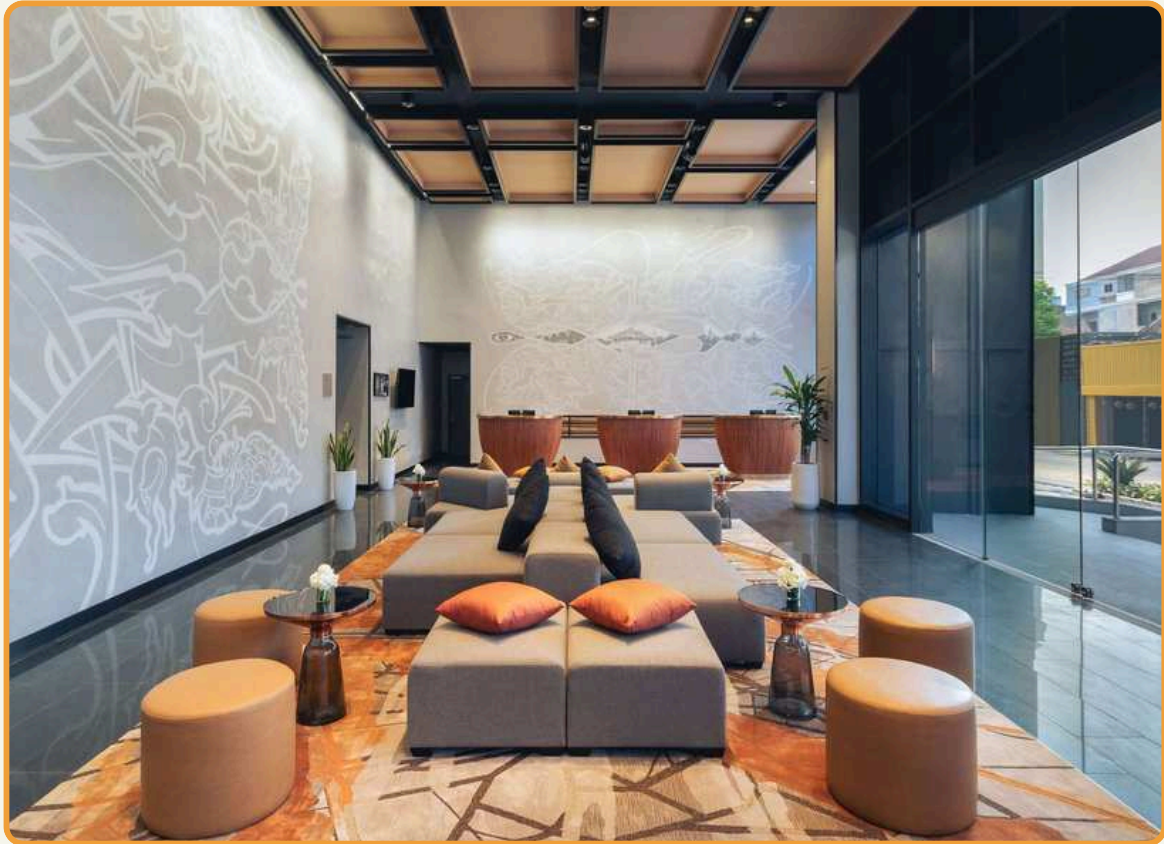
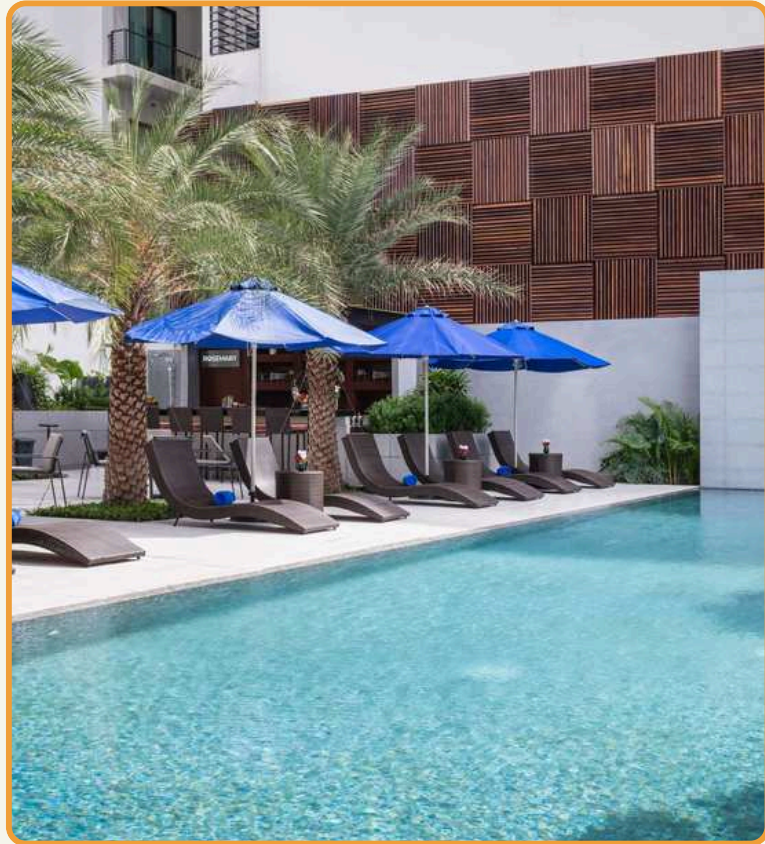
- Afternoon tea, and à la carte menu for up to 136 guests.
- FiveFive Rooftop Restaurant & Bar (level 14): Seats ~125, offers panoramic views, signature cocktails, rooftop dining, resident DJs.
- The Attic: Speakeasy bar tucked in the original colonial villa, seating up to 44 guests.
- Metropole Underground: Metro-themed basement bar for up to 157 guests, with live entertainment.
- Poolside Bar: Casual snacks and drinks beside landscaped outdoor pool on the 3rd floor.

MEETING & EVENT

- Regency Ballroom: ~4,941 sq ft (~460 m²), pillarless, full-color LED screen (9.5 × 4 m), natural daylight, street access. Capacity up to 490 theatre / 450 banquet / 312 classroom.
- Meeting Suites: Nine flexible rooms ranging 46 – 204 m², suitable for boardroom (14 pax) to receptions of up to 200 attendees.
- Pre-function areas: Over 1,000 m² with open kitchen access for catering and receptions. Poolhouse Outdoor Venue: Terrace & BBQ areas accommodating up to 70 guests for seaside-style or networking events.



PHOM PENH Accommodations



NOVOTEL PHNOM PENH BKK 1 4* DELUXE

OVERVIEW

Nestled in the dynamic BKK1 district, Novotel Phnom Penh BKK1 offers sleek, contemporary venues ideal for professional gatherings. Beyond business, the hotel impresses with thoughtful amenities: an Executive Lounge, “Calm Corner” for unwinding, Basque-inspired dining, rooftop wellness areas, and striking city or river views—all within walking distance of Phnom Penh’s cultural and business hubs

LOCATION

Boeung Keng Kang 1, Phnom Penh

NUMBER OF ROOMS: 254 ROOMS

- Superior Rooms (27 sqm)
- Deluxe Rooms (34 sqm)
- Executive Rooms
- Executive Suites (45 sqm)



PHOM PENH Accommodations



NOVOTEL PHNOM PENH BKK 1

F&B OUTLETS

- * Above Eleven Rooftop Bar: located on 28th floor, offer stunning city view
- * Makila Restaurant: all-day dining

MEETING & EVENT

- * The Square Ballroom (272sqm): 180 pax, 5 m ceiling height, full AV support
- * Meeting Room ABCD (168sqm): 100 pax



SIHANOUK-VILLE ACCOMMODATION



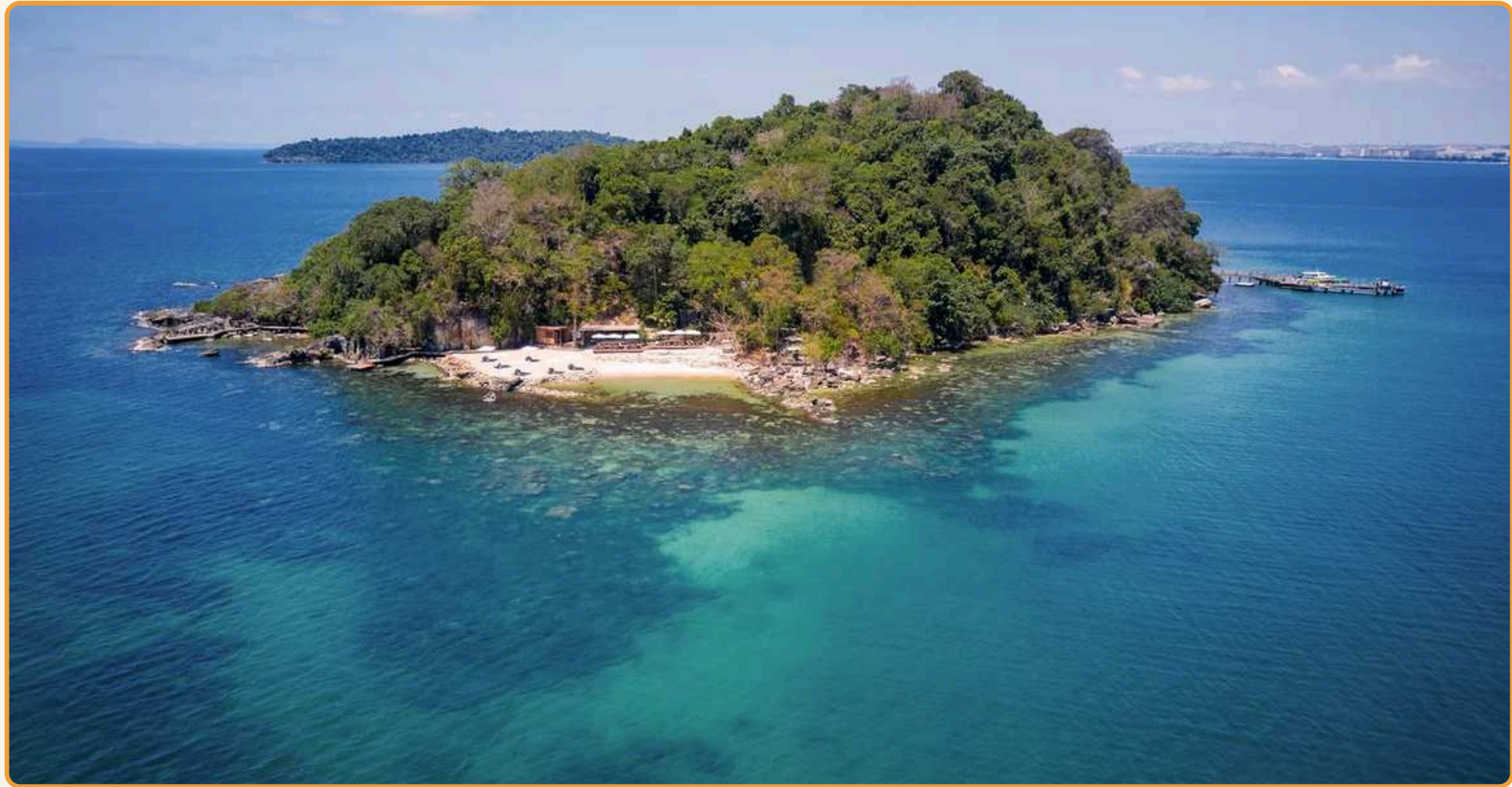
auroratravel.asia



LUXURIOUS PRIVATE ISLAND RESORT OFFERS AN IDYLIC RETREAT SURROUNDED BY TURQUOISE WATERS



Sihanouk-ville Accommodation



SIX SENSES KRABEY ISLAND 5* LUXURY

OVERVIEW

Six Senses Krabey Island is a luxurious eco-resort located on a private island off Cambodia's southern coast, near Sihanoukville. The resort features 40 private pool villas surrounded by tropical jungle and ocean views. It offers holistic wellness programs, a 2,000sqm spa, multiple dining venues, a beach, and sustainable experiences like organic farming, Khmer cooking classes, and open-air cinema.

LOCATION

Preah Sihanouk, Cambodia

NUMBER OF ROOMS: 40 PRIVATE POOL VILLAS

- Hideaway Pool Villa Suite (21 units) – 118 m², tropical jungle setting, separate air-conditioned living area.
- Ocean Pool Villa (2 units) – 77 m², elevated sea views, no internal living room.
- Ocean Pool Villa Suite (9 units) – 120 m², indoor living area + ocean-facing sundeck.
- Oceanfront Pool Villa Suite (5 units) – 120 m², front-row ocean views, living area + pool deck.
- Oceanfront Two-Bedroom Pool Villa (2 units) – 200 m² duplex layout, ideal for up to 6 guests.
- The Beach Retreat (1 unit) – 188 m², two separate adjoining villas, private beach cove, ideal for families/groups



Sihanouk-ville Accommodation



SIX SENSES KRABEY ISLAND 5* LUXURY

F&B OUTLETS

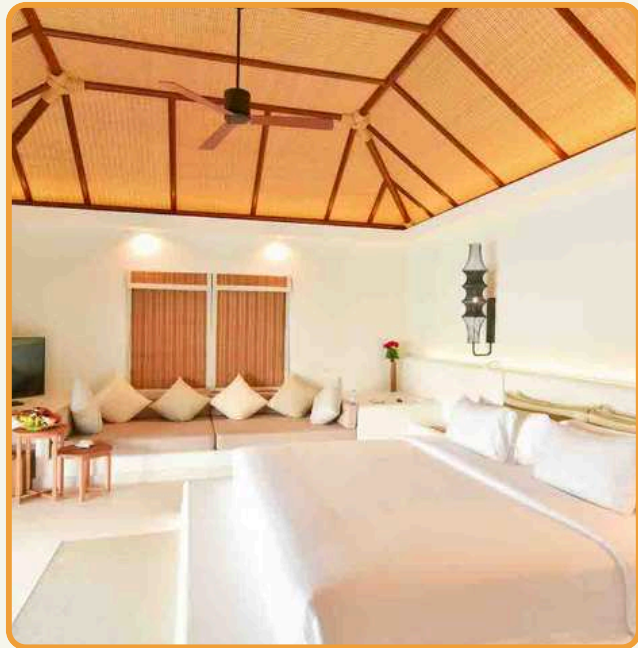
- AHA Restaurant: All-day dining offering healthy international and pan-Asian dishes overlooking pool and ocean WBP.
- Tree Restaurant: Elevated jungle-view restaurant featuring Khmer and Southeast Asian cuisine with sustainable-local sourcing
- Sunset Bar: Clifftop split-level bar offering panoramic views and cocktails at dusk
- Double-Dip Hangout / Ice-Cream Parlour: Poolside café serving light bites and complimentary homemade gelato and sorbet

MEETING & EVENT

Island-wide exclusive-use options: Reserved private island for up to 86 guests for multi-night stays, inclusive of customized wellness, dining, and team activities (e.g. cooking, beach BBQ, cinema, sunset drinks, massages, mixology)



Sihanouk-ville Accommodation



THE ROYAL SANDS KOH RONG 5* LUXURY

OVERVIEW

Set along 550 meters of pristine white-sand beach, The Royal Sands Koh Rong combines barefoot luxury with modern comfort, offering elegant villas, oceanfront dining, and a serene spa for high-end meetings and incentives. Accessible via a short boat transfer, this exclusive resort provides inspiring coastal scenery, personalized service, and bespoke group activities—ideal for creating unforgettable corporate experiences.

LOCATION

Sok San Beach, Koh Rong Island, ~60-minute boat ride from Sihanoukville

NUMBER OF ROOMS: 67 STANDALONE VILLAS

- * Oceanview Villa (King): 29 units
- * Beachfront Villa (King): 8 units
- * Oceanview Pool Villa (King): 17 units
- * Beachfront Pool Villa (King): 10 units
- * 2 Bedrooms Oceanview Pool Villa (2 King beds): 2 units
- * 3 Bedroom Beachfront Pool Villa (3 King beds): 1 unit



Sihanouk-ville Accommodation



THE ROYAL SANDS KOH RONG 5* LUXURY

F&B OUTLETS

- * Ocean Restaurant: All-day dining
- * The Chill Lounge & Beach Bar

MEETING & EVENT

The resort doesn't have formal event halls but offer romantic beach dinners and bonfire setups, live music, fireworks by the beach



Sihanouk-ville Accommodation



SOKHA BEACH RESORT

OVERVIEW

Situated on Sokha Beach, about 5 minutes by car from Sihanoukville town center and 30 minutes from Sihanoukville International Airport. The resort spans 23.5 hectares with 1.5km of private white sandy beach, beautifully landscaped gardens, and Khmer-inspired architecture blending tradition with modern comfort.

LOCATION

Koh Russey (Bamboo Island), Cambodia

NUMBER OF ROOMS: 188 ROOMS + 10 VILLAS

- Superior Room (Garden view) (~44 m²)
- King or twin beds, garden-facing balcony.
- Deluxe Room (Ocean view) (~44 m²)
- Same layout with ocean-facing balcony.
- Club Suite (~48 m²)
- Elevated bedding (circular bed), panoramic garden/ocean views.
- Junior Suite (~88 m²)
- Spacious living area, larger balcony with sea views.
- Villas (10 units)
- Private villas with living areas and kitchenettes for enhanced privacy and flexibility



Sihanouk-ville Accommodation



SOKHA BEACH RESORT

F&B OUTLETS

- Lotus Restaurant: Indoor signature restaurant for international buffets and Asian cuisine (~100 pax).
- Lemongrass Restaurant: Upscale seafront dining with seafood, Khmer, and Chinese dishes (capacity ~150).
- Champa Café & Bar: Garden-side lounge for light meals and beverages (~50 pax).
- Sokha Wine Bar: Evening bar with wines, entertainment (~50 pax).
- Pool Bar & Dolphin Bar: Swim-up bars adjacent to lagoon and kids' pools.
- Beach Bar: Cocktails and snacks right on the beach; ideal for private gatherings.

MEETING & EVENT

Grand Ballroom

- Size: 1,232 m² (56 × 22 m), height 6 m
- Capacity: up to 1,400 (theater), 820 (classroom), 960 (banquet); divisible into 4 individual ballrooms (~308 m² each, capacity ~350 theater)

Board & Meeting Rooms

- Board Room I & II: 120 m² each, seating ~135 theater and ~80 classroom.
- Meeting Rooms I–III: 80–90 m² each, up to 55 theater depending on layout.
- Function Rooms I & II: 372 m² (~400 theater) and 260 m² (~270 theater) respectively.
- VIP Lounge: 91 m² for private consultations or VIP arrival.



Sihanouk-ville Accommodation



SOKHA BEACH RESORT 5* DELUXE

OVERVIEW

Spanning 1.5 kilometers of private white-sand beach in Sihanoukville, Sokha Beach Resort offers expansive event venues, from grand ballrooms to scenic outdoor spaces, ideal for conferences, incentives, and gala celebrations. Delegates can enjoy multiple dining options, a full-service spa, and resort-style leisure facilities, all within a setting that blends tropical beauty with professional service for seamless corporate gatherings.

LOCATION

5-minute drive from Sihanoukville town center

NUMBER OF ROOMS: 969 ROOMS

- ROH Superior & deluxe: 44sqm
- Club suite: 48sqm
- Junior suite: 88sqm
- Executive suite: 132sqm
- Apsara suite: 176sqm
- Royal Sokha Suite: 308sqm
- Villa: 44-53sqm
- Grand villa: 73sqm
- Chalet: 101sqm



Sihanouk-ville Accommodation



SOKHA BEACH RESORT 5* DELUXE

F&B OUTLETS

- Lotus Restaurant: International buffet breakfast and dinner
- Lemongrass restaurant: Khmer and seafood with seafront dining
- The Deck Tapas Bar: Beachfront tapas and cocktails
- Champa Café & Bar, China House, Turmeric – Spread across beachfront, poolside, and garden locations
- Multiple bars including Pool Bar, Dolphin Bar, and Beach & Sunset Bar, offering light bites and drinks in leisure settings

MEETING & EVENT

- Total indoor meeting space: 4,856sqm across 15 rooms
- Grand Ballroom (1,232 sqm): up to 1,400 pax
- Four partitioned ballrooms (each ~308 sqm) allowing flexible setups





Thank You



Head Office: VINARE Building, Le Duan St., Cua Nam ward, Hanoi, Vietnam
Tel: +84 24 3747 2597 | www.auroratravel.asia | mice@auroratravel.asia