



THAILAND

HOTELS



TABLE OF CONTENTS



auroratravel.asia



BANGKOK ACCOMMODATIONS

CHIANGMAI ACCOMMODATIONS

PHUKET ACCOMMODATIONS

SAMUI ACCOMMODATIONS

PATTAYA ACCOMMODATIONS



BANGKOK ACCOMMODATIONS



auroratravel.asia



THE BLEND OF ANCIENT TRADITIONS AND MODERNITY



Bangkok Accommodations



MANDARIN ORIENTAL HOTEL 5* LUXURY

OVERVIEW

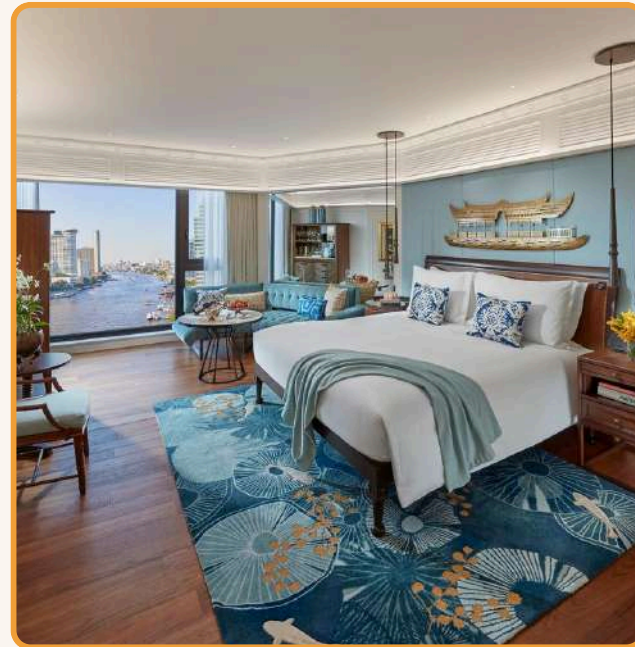
Mandarin Oriental, Bangkok – “Grand Dame of the River” for 149+ years, reimagined in 2019. Riverside rooms blend Thai elegance with modern luxury. Guests enjoy 12 acclaimed restaurants and bars, private teakwood boat access to The Oriental Spa, wellness, IconSiam, Skytrain, and riverside dining. Iconic venues and legendary service make it Bangkok’s premier luxury hotel.

NUMBER OF ROOMS: 331 ROOMS

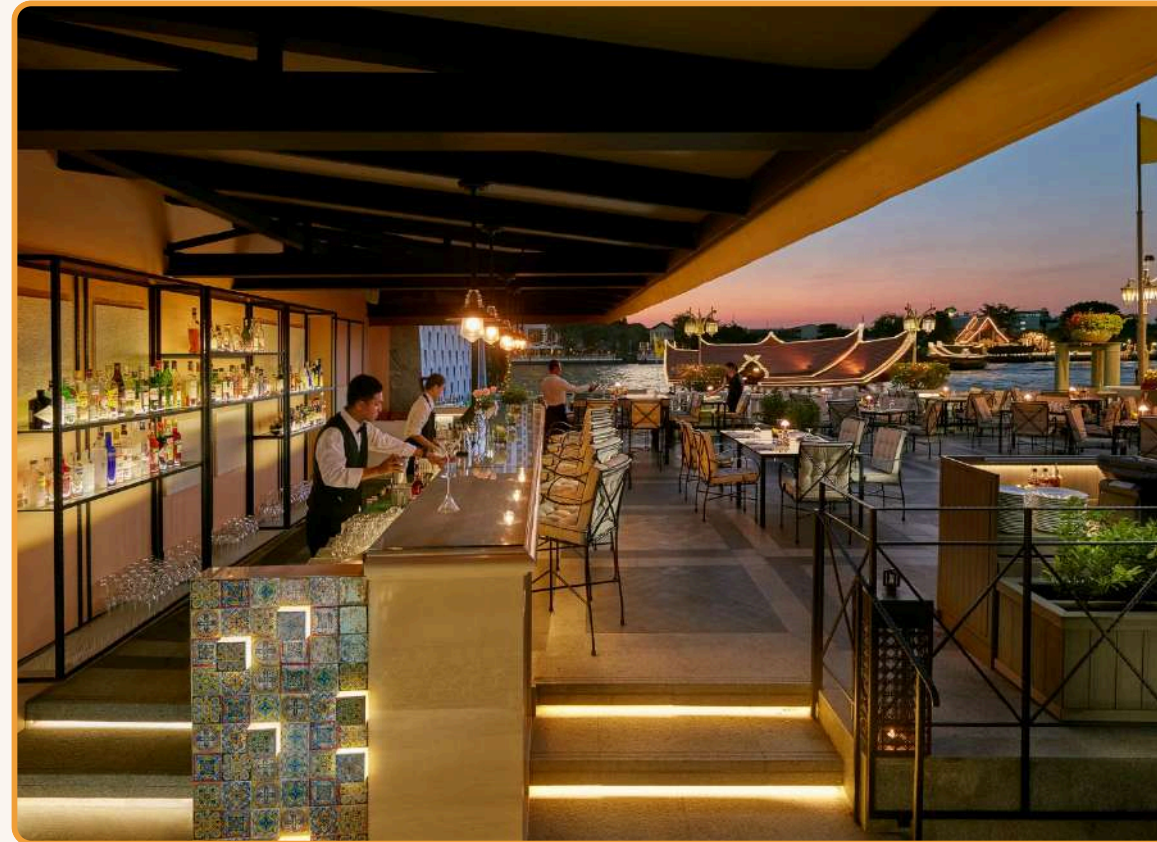
- Rooms: Deluxe Premier (43 m²), Mandarin Room (63 m²), family-friendly Connecting Rooms (86 m²).
- Suites: Authors’ (92 m²), Chao Phraya (80–83 m²), Siam (107 m²), Selandia (169–185 m²).
- Prestige Suites: Ambassador (173 m²), Oriental (295 m²), Royal (306–326 m²).

LOCATION

48 Oriental Avenue, Bangkok, riverside, direct boat link to BTS Saphan Taksin.



Bangkok Accommodations



MANDARIN ORIENTAL HOTEL 5* LUXURY

F&B OUTLETS

12 restaurants & bars, from Michelin-starred to authentic Thai:

- Signature: Lord Jim's (seafood/meats), Kinu by Takagi (Kaiseki), Authors' Lounge (Afternoon Tea), Bamboo Bar (jazz & cocktails)
- Under renovation: Le Normandie & The China House (2025)
- Al fresco: The Verandah, Riverside Terrace (BBQ), Ciao Terrazza (Italian)
- Across the river: Sala Rim Naam, Terrace Rim Naam, Baan Phraya (Thai cultural dining)

MEETING & EVENT

- Total venues: ~20 (indoor + outdoor), ~3,399 m² total space
- Largest: Royal Ballroom (510 m²) – up to 800 guests
- Mid-size: Chao Phya, Ta-Jeen, Maeklong rooms (can combine)
- Small: Embassy Room (~80 pax), Boardrooms (10–18 pax)
- Unique/social: Authors' Lounge, Riverside Terrace, Sala Rim Naam, etc.



Bangkok Accommodations



CAPELLA BANGKOK HOTEL 5* LUXURY

OVERVIEW

Voted The World's Best Hotel 2024, Capella Bangkok redefines riverside luxury with just 101 keys, each offering uninterrupted views of the Chao Phraya River. Nestled along historic Charoenkrung Road, the hotel blends refined modern design with rich local heritage, creating an atmosphere that is both intimate and inspiring. With Michelin-starred dining, award-winning event spaces accommodating up to 500 guests, and bespoke cultural experiences curated by Capella Culturists, this urban sanctuary sets the stage for extraordinary meetings, incentives, and celebrations in Bangkok.

NUMBER OF ROOMS: 101 ROOMS

- Riverfront & Riverfront Premier Rooms – 61 sqm, balcony, pool or river views
- Courtyard Suite – 101 sqm, pool view
- River Suite – 95 sqm, living room, river-view balcony
- River Premier Suite – 110 sqm, river-view balcony
- Capella Suite – 153 sqm, living/dining, wrap-around river balcony
- Veranda – 137 sqm, terrace, sala & jacuzzi pool, river-facing
- Veranda Suite – 209 sqm, living room, terrace & jacuzzi pool, river-facing
- Villas (7 total) – riverside, private balcony or terrace with jacuzzi plunge pool

LOCATION

Situated on the east bank of the Chao Phraya River in Bangkok's historic Sathon district.

Just a 10-minute walk from Old Town, with convenient shuttle-boat access to ICONSIAM and BTS Saphan Taksin



Bangkok Accommodations



CAPELLA BANGKOK HOTEL 5* LUXURY

F&B OUTLETS

- Cote by Mauro Colagreco, A two-MICHELIN-star, Mediterranean-inspired fine dining
- Phra Nakhon: A Thai kitchen, all-day dining
- Stella – Boutique cocktail bar
- Tea Lounge with panoramic riverview

MEETING & EVENT

Ballroom

- Capacity: Up to 728 seated or 650 standing.

Atelier I

- Ideal for medium-sized gatherings: around 80 seated or 110 standing.

Courtyard (Outdoor Lawn)

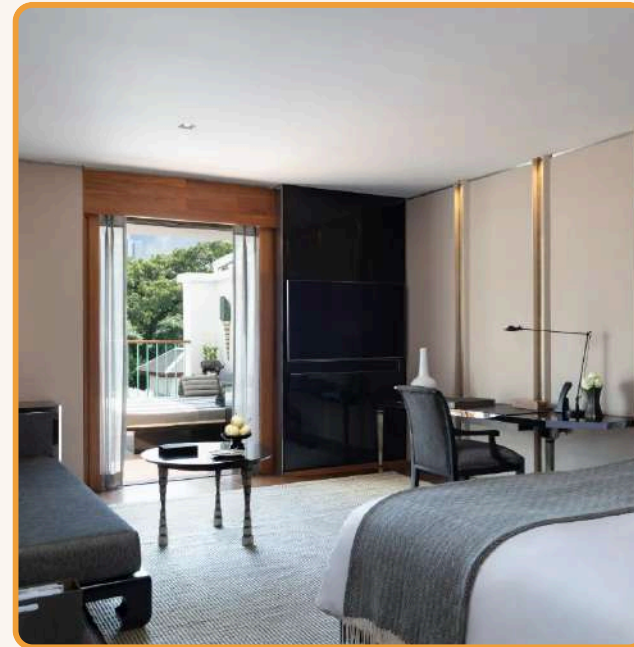
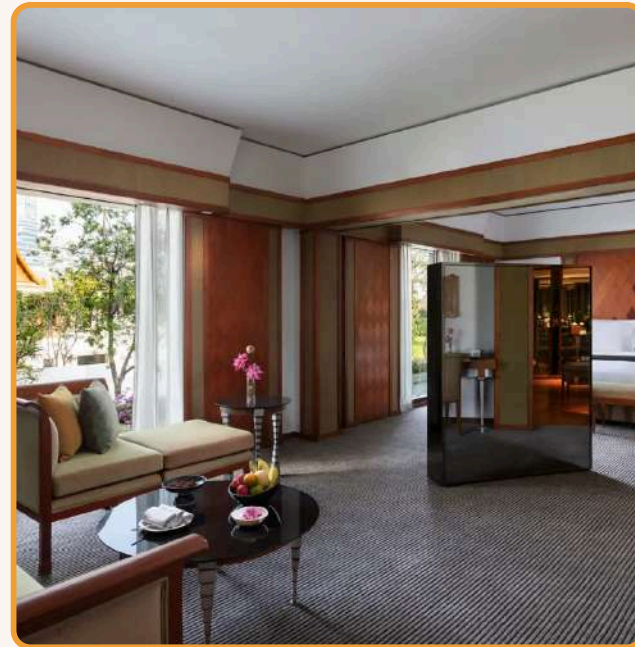
- Perfect for open-air events: up to 200 guests (standing) or 160 seated, with scenic river views.

Additional Ateliers (II, III, IV)

- Versatile smaller meeting rooms for charming and tailored experience



Bangkok Accommodations



SUKHOTHAI BANGKOK HOTEL 5* LUXURY

OVERVIEW

Set amid lush gardens in the heart of downtown Sathorn, The Sukhothai Bangkok invites MICE audiences to experience elevated gatherings infused with Thai elegance. With 210 exquisitely designed rooms, a revered spa, and seven refined F&B venues—including Michelin-caliber La Scala and iconic Celadon—this designed sanctuary blends sophistication with serenity. From intimate boardroom sessions to grand events for up to 300 guests, its natural-light ballrooms and outdoor courtyards inspire creativity and cultivate success.

NUMBER OF ROOMS: 210 ROOMS

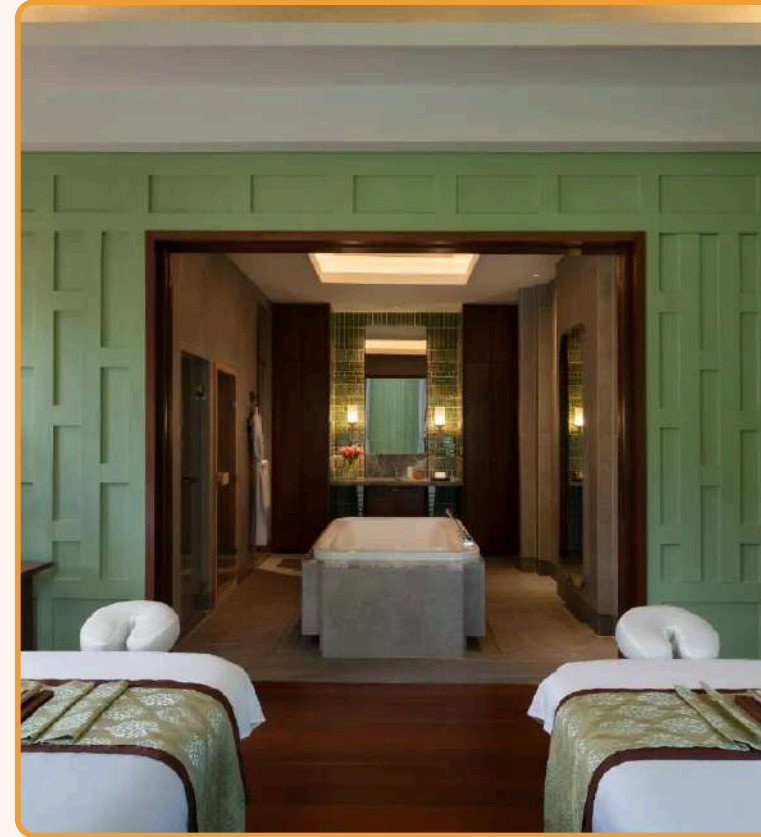
- Superior Room (38 m²): Classic Thai style with teak and silk.
- Deluxe Studio Room (45 m²): Pool view, modern Thai design.
- Executive Suite (76 m²): Open-plan, teak floors, city/courtyard view.
- Deluxe Suite (76 m²): Spacious, refined décor, luxury bath.
- Garden Suite (76 m²): High ceiling, sun terrace, garden/pond view.
- Deluxe Terrace Suite (66 m²): Balcony, rustic-contemporary Thai charm.
- Deluxe Residence Suite (98 m²): Apartment-style with living, dining, bedroom, and walk-in closet.
- The Sukhothai Suite (138–198 m²): Signature suite with lounge, dining, study, kitchen, grand bath, private terrace.

LOCATION

Sathorn downtown district, Bangkok



Bangkok Accommodations



SUKHOTHAI BANGKOK HOTEL 5* LUXURY

F&B OUTLETS

seven venues, including standout favorites:

* Celadon: Renowned for authentic Thai cuisine, often accompanied by classical dance performances.

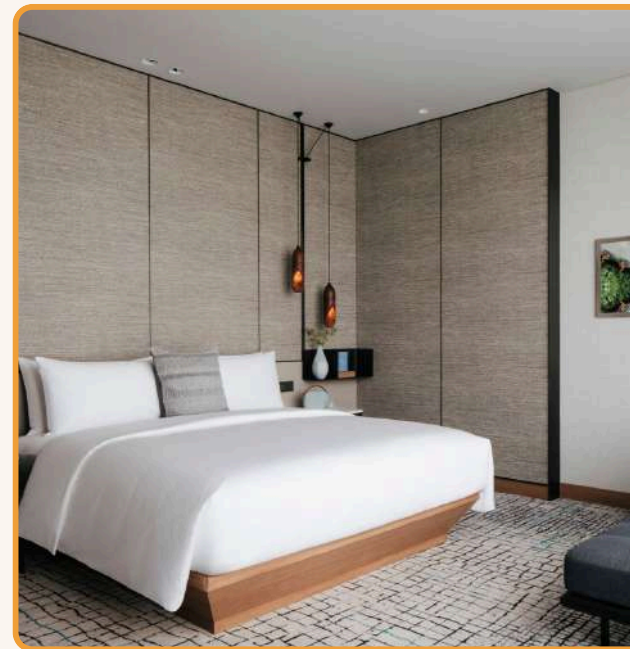
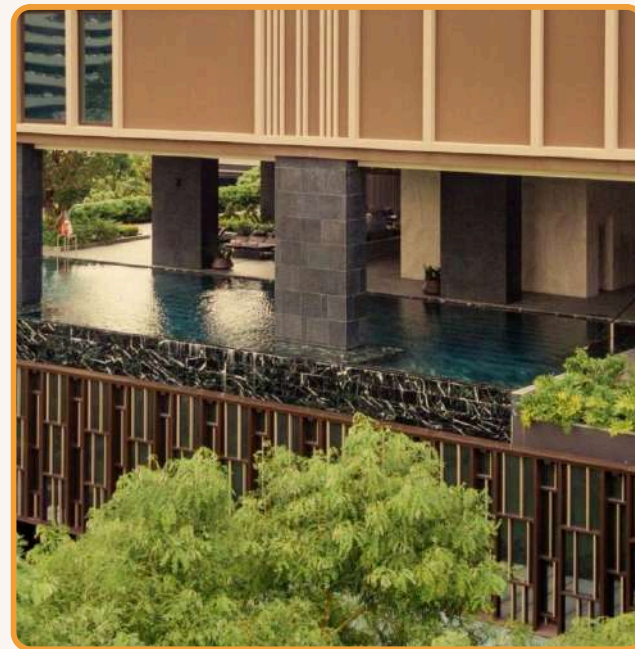
* La Scala: A Michelin-star-level Italian restaurant.

MEETING & EVENT

- Sukhothai Ballroom – 266 m², up to 350 guests (cocktail).
- Ballroom II – 70 m², ~60 guests.
- Private Room – 55 m², ~40 guests.
- Bussabong Rooms (1-4) – 37 m² each; combined up to 273 m², ~110 guests.
- Courtyard Garden – intimate outdoor space, ~80 guests.
- Sukhothai Garden – large outdoor venue, up to 600 guests.



Bangkok Accommodations



KIMPTON MAA-LAI BANGKOK BY IHG 5* LUXURY

OVERVIEW

Kimpton Maa-Lai Bangkok by IHG combines stylish, pet-friendly luxury with sweeping park views in the heart of Sindhorn/Langsaan. With six vibrant dining and entertainment venues—including a lively 40th-floor rooftop bar—the hotel offers built-in social energy and exclusive buyout options. Bright, garden-facing meeting rooms and the unique Urban Oasis provide versatile indoor-outdoor event spaces, making it an inspired choice for both business and leisure gatherings.

NUMBER OF ROOMS: 360 KEYS, 40 FLOORS

- Guest Rooms: Essential (~48 m²), Premium (~67 m²), Grand Premium (~83 m²).
- Suites: Maa-Lai Suite (~83 m²), Junior Suite (87–108 m²), Kimpton/Executive Suite (~108 m²), Embassy Suite (1BR ~124 m², 2BR ~171 m²), Family Suite (2BR ~167 m²), The Bill Kimpton Suite (~320 m², signature suite with jacuzzi & bar).
- Residences (long stays): 1BR (55–97 m²), 2BR (95–167 m²), 3BR (~175 m²) with full kitchen.

LOCATION

Langsaan/Tonson address at the doorstep of Lumpini Park in the central city



Bangkok Accommodations



KIMPTON MAA-LAI BANGKOK BY IHG 5* LUXURY

F&B OUTLETS

- * Stock.Room: market-style all-day dining
- * Ms.Jigger: Italian restaurant
- CRAFT: café/bar
- * Bar.Yard: 40F rooftop oasis with great tunes and tiki bar vibes

MEETING & EVENT

- Studios 1-6 + Boardroom - Flexible indoor meeting rooms (33-167 m²), capacity 11-150 guests, all with natural light and modern tech.
- Grand Studio - Largest indoor space, up to 150 guests.
- Urban Oasis (Garden) - Outdoor green space, up to 250 guests
- Private venues:
 - Bar.Yard (rooftop bar) - up to 250 guests
 - Stock.Room (627 m² lifestyle space) - up to 200 guests
 - Ms.Jigger (Italian lounge) - up to 82 guests
 - Maa-Lai Library - up to 70 guests



Bangkok Accommodations



ANANTARA SIAM HOTEL 5* LUXURY

OVERVIEW

Anantara Siam Bangkok is a heritage urban sanctuary on Ratchadamri Road, blending colonial grandeur with Thai artistry, from hand-painted silk murals to frescoed ceilings. Its prestigious central location in Pathum Wan places guests steps away from the BTS, Lumpini Park, luxury shopping, and Bangkok's business hubs. With a legacy shaped by its past as a Four Seasons and Peninsula, the hotel now stands as Anantara's flagship showcase of timeless elegance and world-class hospitality.

NUMBER OF ROOMS: 354 ROOMS

- * Deluxe Room: 42sqm
- * Premier Room: 42sqm
- * Siam Suite: 72sqm
- * Garden Terrace Room: 52sqm

LOCATION

155 Rajadamri Road, Bangkok, a most central location



Bangkok Accommodations



ANANTARA SIAM HOTEL 5* LUXURY

F&B OUTLETS

08 dining venues ranging from signature Thai to bespoke Western cuisine:

- The Lobby: All-day dining with live entertainment.
- Spice Market: Thai classics in a market-inspired layout.
- Biscotti: Open-kitchen Italian fare.
- Madison: Tony Chi-designed steakhouse.
- Plus Shintaro, among others

MEETING & EVENT

- Grand Ballroom – 814 m², up to 875 guests (largest venue).
- Pimarnman Room – 237 m², up to 228 guests.
- Montathip Rooms (I–IV + Boardroom) – 53–152 m², flexible spaces for 12–154 guests.
- Ratana / Kosin / Amorn – ~60 m², up to 40 guests.
- Busaba / Napa / Suriyan / Chandra / Suriyanchandra – 60–158 m², up to 140 guests.



Bangkok Accommodations



CARLTON HOTEL BANGKOK SUKHUMVIT 5* LUXURY

OVERVIEW

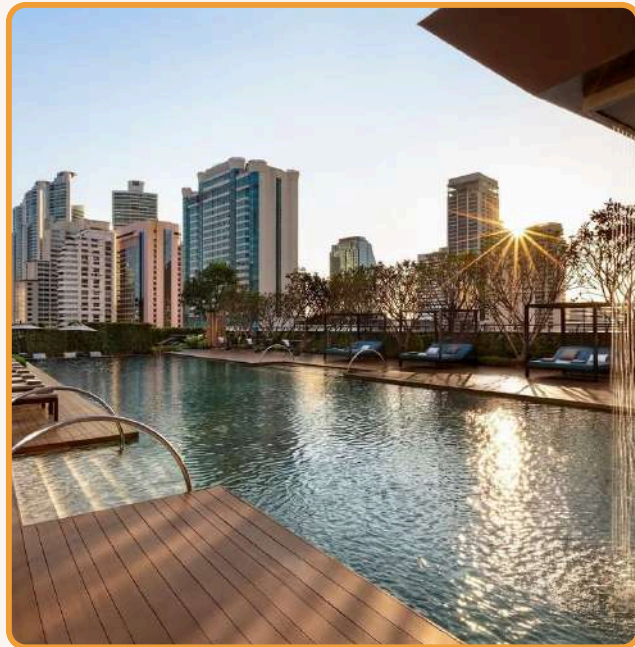
Carlton Hotel Bangkok Sukhumvit blends stylish contemporary design and Michelin-class dining with unmatched urban convenience. Ideally located between Asoke and Phrom Phong BTS stations, it offers 338 elegantly appointed rooms, a celebrated Cantonese restaurant (Wah Lok), a rooftop bar with sweeping views, and 1,200 sqm of flexible MICE-ready event space—including a grand ballroom for up to 600 guests.

NUMBER OF ROOMS: 338 ROOMS

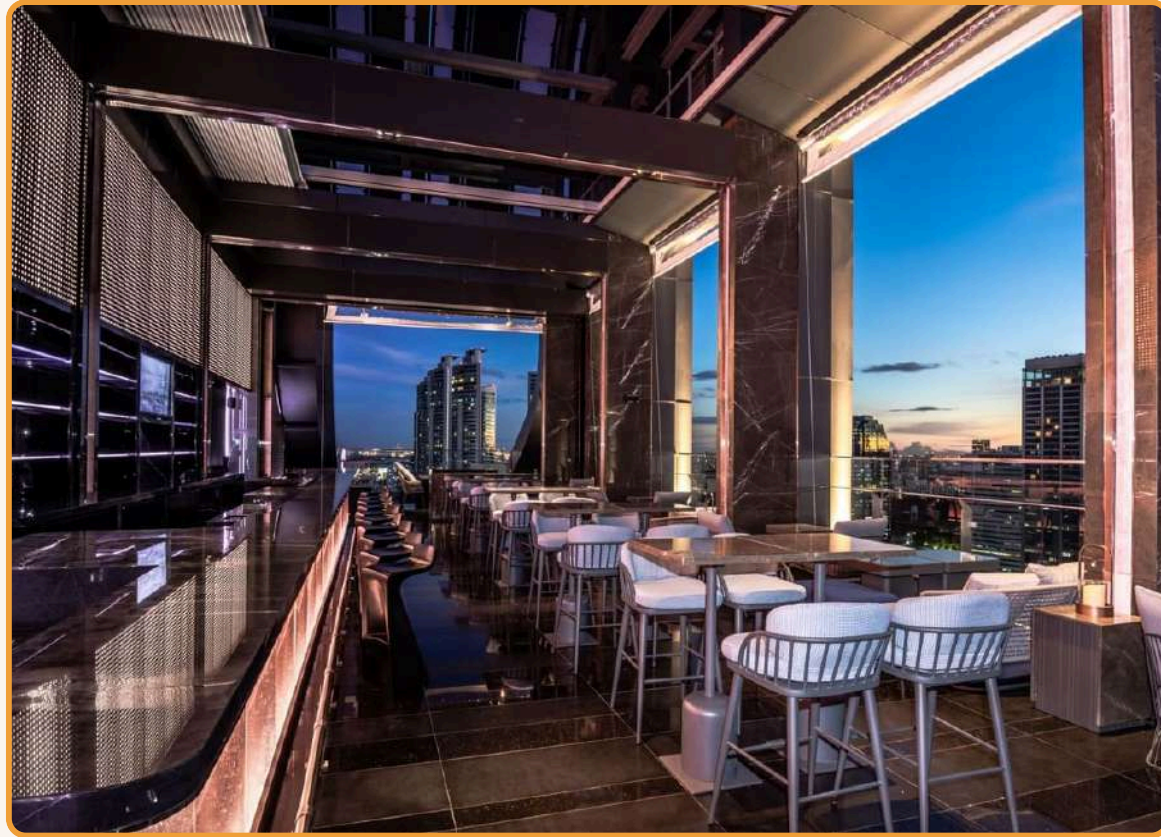
- * Deluxe Room: 37sqm
- * Executive Room: 37sqm
- * Carlton Club room: 37sqm
- * Executive suite: 64sqm

LOCATION

491 Sukhumvit Road, Bangkok. Most central location



Bangkok Accommodations



CARLTON HOTEL BANGKOK SUKHUMVIT 5* LUXURY

F&B OUTLETS

Wah Lok: A Michelin Guide-listed, Cantonese restaurant

Plate Restaurant: All-day dining serving international, Thai, and Peranakan dishes.

Cooling Tower Rooftop Bar: Panoramic city views, cocktails, and bar bites.

Tuxedo Espresso Bar: Casual café and lounge for afternoon tea

MEETING & EVENT

- Carlton Grand Ballroom – up to 600 guests, ideal for large conferences, weddings, and banquets.
- Sukhumvit Meeting Room (470 m²) – divisible into 4 rooms, capacity up to 480 (cocktail) or 380 (theatre/banquet).
- Ballroom 1 & 2 – each holds up to 300 guests (theatre).
- Sukhumvit Rooms 1-4 – medium-sized, up to 120 guests.
- Small Rooms (Brass, Bronze, Copper 1 & 2) – 10-20 guests, perfect for board meetings or small gatherings.



Bangkok Accommodations



THE PENINSULA BANGKOK HOTEL 5*

OVERVIEW

The Peninsula Bangkok is a riverside icon combining architectural grace with modern Thai elegance. With 367 luxurious rooms and suites offering sweeping Chao Phraya views, a curated selection of refined dining venues, an award-winning spa, and 1,450 m² of sophisticated event space—culminating in the impressive Sakuntala Ballroom—the hotel delivers seamless, high-impact MICE experiences with a touch of exclusivity (including helipad access for VIP arrivals).

NUMBER OF ROOMS: 370 ROOMS

- * Deluxe room: 45 – 47 sqm, river view
- * Grand deluxe room: 45 – 47 sqm, river view
- * Deluxe suite: 74 sq m, river view
- * Premier suite: 84 sq m, river view
- * Thai suite: 150 sq m, river view
- * Terrace Suite: 190 sq m, river view

LOCATION

Khlong San, Bangkok, Thailand



Bangkok Accommodations



THE PENINSULA BANGKOK HOTEL 5*

F&B OUTLETS

05 restaurants & two bars, including:

- River Café & Terrace: all-day dining
- Mei Jiang: refined Cantonese dining and renowned dim sum.
- Thiptara: romantic Thai cuisine set beside the river with charming lantern-lit decor.
- The Lobby: elegant afternoon tea
- Pool Bar: relaxed cocktails and bites by the poolside

MEETING & EVENT

- Total Meeting Space: ~1,200 m² across 10 rooms, capacity 10–600 guests.
- Carlton Grand Ballroom – up to 600 guests, ideal for large conferences, weddings, and banquets.
- Sukhumvit Meeting Room (470 m²) – divisible into 4 rooms, up to 480 guests (cocktail) or 380 (theatre/banquet).
- Additional Rooms – Ballrooms 1 & 2 (~300 guests each), Sukhumvit Rooms 1–4 (~120 guests), and small boardrooms (Brass, Bronze, Copper: 10–20 guests).



Bangkok Accommodations



SHANGRI-LA BANGKOK HOTEL

5*

OVERVIEW

Shangri-La Bangkok stands as a riverside beacon of luxury and connectivity. With 802 elegantly appointed rooms across two wings, multiple celebrated dining outlets, and more than 7,900 sqm of event space—including a stunning 1,360 sqm Grand Ballroom and verdant garden venues—the hotel effortlessly blends convenience, versatility, and elegance. Seamlessly linked by direct BTS and river access, it's the perfect choice for elevated meetings, incentives, conferences, and high-profile social events.

NUMBER OF ROOMS: 802 ROOMS

- * Shangri-La Wing: 673 rooms
- * Krungthep Wing: 129 rooms, including some serviced apartments

LOCATION

89 Soi Wat Suan Plu, in Bangrak district, Chao Phraya riverside setting



Bangkok Accommodations



SHANGRI-LA BANGKOK HOTEL

5*

F&B OUTLETS

- Angelini: renowned Italian cuisine.
- Salathip: classic Thai dishes in a tranquil riverside pavilion.
- Shang Palace: spacious, upscale Cantonese restaurant seating over 300.
- NEXT2 Café: modern market-style all-day dining.

MEETING & EVENT

Over 7,961 sqm of meeting space, across 20–31 function rooms

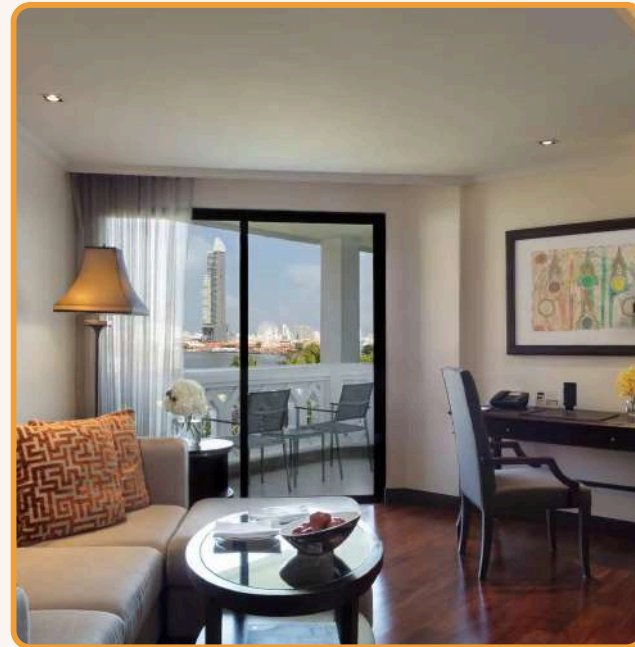
* Grand Ballroom: 1,360 sqm, max 1000 seats

* Smaller ballrooms: fit for groups of 300–450 pax

* Garden and riverside outdoor spaces: ideal for cocktail receptions, and team-building formats.



Bangkok Accommodations



ANANTARA RIVERSIDE HOTEL

5*

OVERVIEW

Set on the Chao Phraya River amid lush tropical gardens, Anantara Riverside offers a serene sanctuary just steps from Bangkok's fast-paced urban tapestry. With 376 Thai-inspired rooms, a comprehensive spa, and immersive local experiences, the resort completes its allure with nine varied dining venues and versatile event spaces—including a 600-guest riverside ballroom. Efficient boat access to city transport ensures it's the perfect destination for MICE events that blend immersive relaxation with high-impact hosting.

NUMBER OF ROOMS: 376 ROOMS

- * 148 Deluxe Room: 38sqm, balcony
- * 37 Deluxe Junior Suite: 46sqm, balcony
- * 97 Deluxe River View Room: 38sqm, balcony
- * 36 Deluxe River Front Room: 38sqm, balcony
- * 46 Junior River View Suite; 46sqm, balcony
- * 25 Anantara River Front Suite: 108sqm, balcony

LOCATION

Charoen Nakhon Road, Thonburi, Bangkok



Bangkok Accommodations



ANANTARA RIVERSIDE HOTEL

5*

F&B OUTLETS

- The Market – buffet-style international cuisine
- Benihana – Japanese teppanyaki
- Trader Vic's – Polynesian steakhouse
- Riverside Terrace – BBQ with riverside Thai dance
- Loy Nam Bar – poolside drinks
- Numero Uno Café – pastries and tea
- Longtail Bar – pier-side drinks
- Elephant Bar – colonial-style lounge
- Manohra Dining Cruise – Thai cuisine on a heritage rice barge

MEETING & EVENT

- Total Meeting Space: Approximately 1,353 m² across 9 versatile venues.
- Chaophraya Ballroom: The largest venue, offering a capacity of up to 600 guests. Ideal for grand conferences, weddings, and banquets.
- Additional Meeting Rooms: The resort provides several smaller meeting rooms, suitable for board meetings, workshops, and breakout sessions. These rooms can host varying capacities, tailored to specific event requirements.



Bangkok Accommodations



AVANI+ RIVERSIDE HOTEL 5*

OVERVIEW

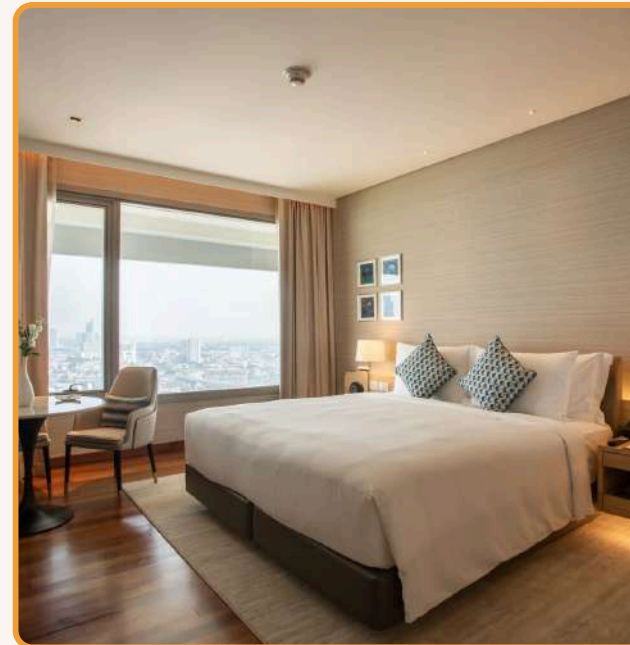
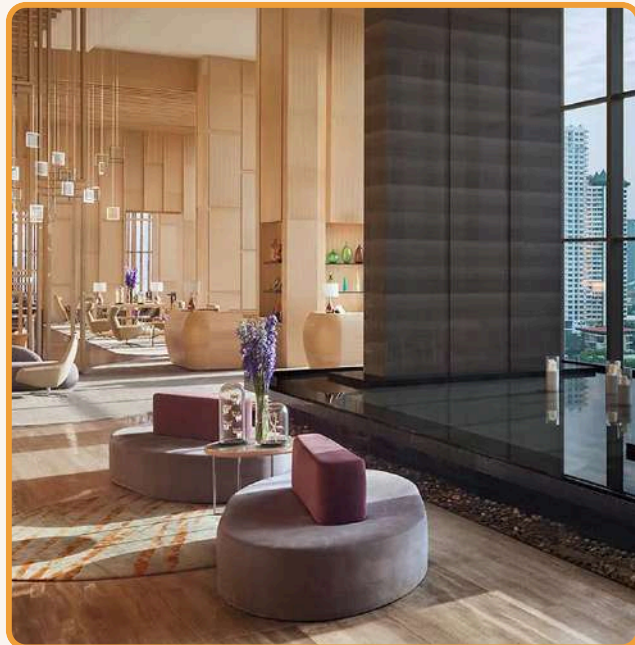
Avani+ Riverside Bangkok Hotel offers dynamic riverside sophistication for events that demand both scale and ambiance. With roughly 626 stylish rooms, the standout Grand Riverside Ballroom (spanning 1,152 sqm), rooftop venues, and around 3,630 sqm of event space across 19 venues, it flexes between large-scale conventions and intimate meetings. Positioned away from the city center yet integrated into the Riverside Convention Complex, it delivers both tranquility and practicality—making it a top pick for versatile, high-impact MICE programming in Bangkok.

NUMBER OF ROOMS: 626 ROOMS

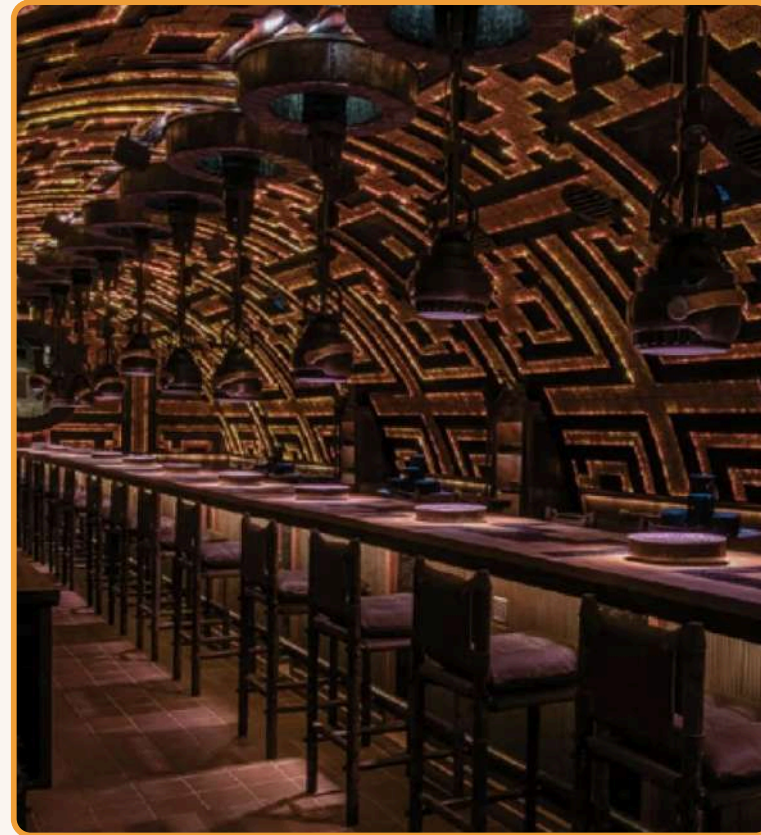
- * 75 Avani River View Room: 30sqm
- * 151 Avani Panorama River View Room: 30sqm
- * 10 Avani River View Junior Suite: 62sqm
- * 10 Avani Panorama Rive rooms: 62sqm

LOCATION

257 Charoennakhon Road, Thonburi, Bangkok



Bangkok Accommodations



AVANI+ RIVERSIDE HOTEL 5*

F&B OUTLETS

- * Seen Restaurant & Bar: modern Portuguese-Brazilian cuisine with skyline ambience.
- * Attitude by Seen: rooftop bar
- * Skyline: all-day dining restaurant
- * The Long Bar
- * The Pantry: deli-style casual fare.

MEETING & EVENT

- Total of 19 meeting venues within over 3,630 sqm:
- * Grand Riverside Ballroom (1152sqm): size 40 x 29 x 11, max 720 seats
 - * Lunar/Moon/Galaxy meeting room (385sqm): size 13.3 x 29 x 11, max 210 seats



Bangkok Accommodations



LANDMARK HOTEL BANGKOK 5*

OVERVIEW

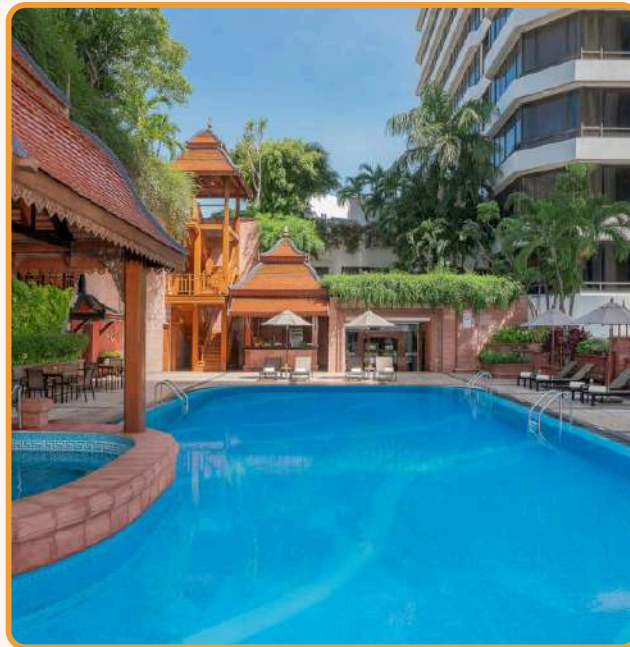
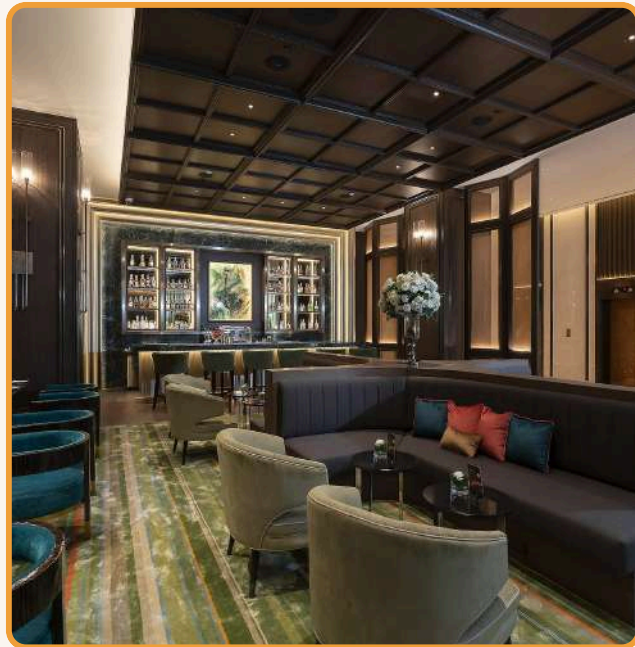
The Landmark Bangkok stands as a modern urban gem on Sukhumvit, offering 399 stylish guestrooms and panoramic rooftop dining, perfectly positioned above Nana BTS. Its 2,200 sqm of elegant event space—including a grand ballroom, stylish breakout rooms, and a striking outdoor sundeck—paired with multiple award-winning F&B outlets, make it an inspired choice for MICE events that balance city convenience with refined hospitality.

NUMBER OF ROOMS: 399 ROOMS

- Premium Room: 30 - 40sqm
- Premium Club Room: 30sqm, club benefit included
- Deluxe Suite: 50sqm
- Executive Suite: 80sqm

LOCATION

138 Sukhumvit Road, Bangkok, centrally located.



Bangkok Accommodations



LANDMARK HOTEL BANGKOK 5*

F&B OUTLETS

Nine diverse dining and bar venues, including:

- Rib Room & Bar Steakhouse: rooftop dining with panoramic views and the largest wine cellar in Bangkok.
- Atrium: all-day buffet with live cooking theaters.
- Sui Sian: well-loved Cantonese cuisine with private dining.
- Rendezvous Bar, Huntsman Pub, Club Lounge on the 31st floor.

MEETING & EVENT

Approximately 2,196 sqm of event space.

- * Landmark Ballroom (~788 sqm): max 450 seats
- * Sukhumvit Rooms (Level 3): 11 modern meeting rooms with capacities 80 banquet.
- * Additional breakout spaces: Landmark Rooms, Conservatory Room, Sundek (outdoor for up to 200 banquet style).



Bangkok Accommodations



GRANDE CENTRE POINT SURAWONG 5*

OVERVIEW

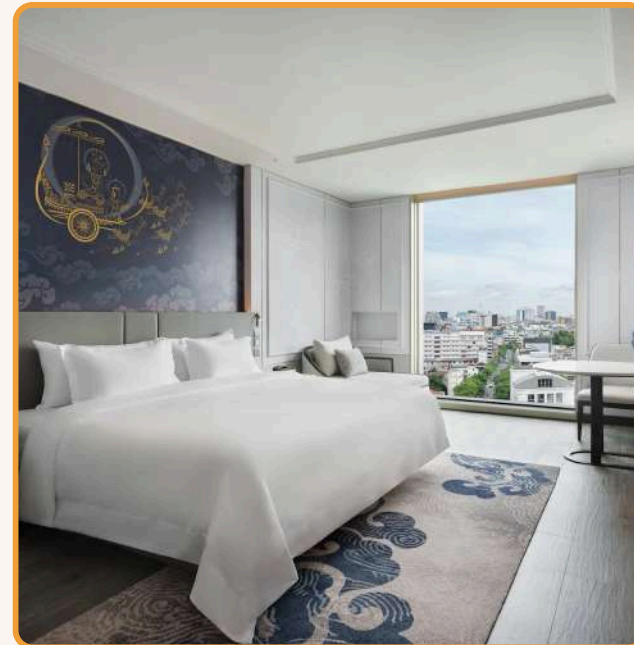
Located in Bangkok's lively Bangrak - Bangkok's central business district, Grande Centre Point Surawong blends cultural charm with modern luxury. The hotel offers 399 spacious rooms, alongside a sky pool, spa, fitness and games areas, and diverse dining—from all-day HUA Restaurant to the rooftop Bangrak Grill with river and skyline views. With Surasak BTS and river transport nearby, plus easy access to Silom, it suits both business and leisure. Its Mekha Ballroom, flexible meeting rooms, and professional event support make it ideal for boutique events, executive retreats, or stylish gatherings.

NUMBER OF ROOMS: 399 ROOMS

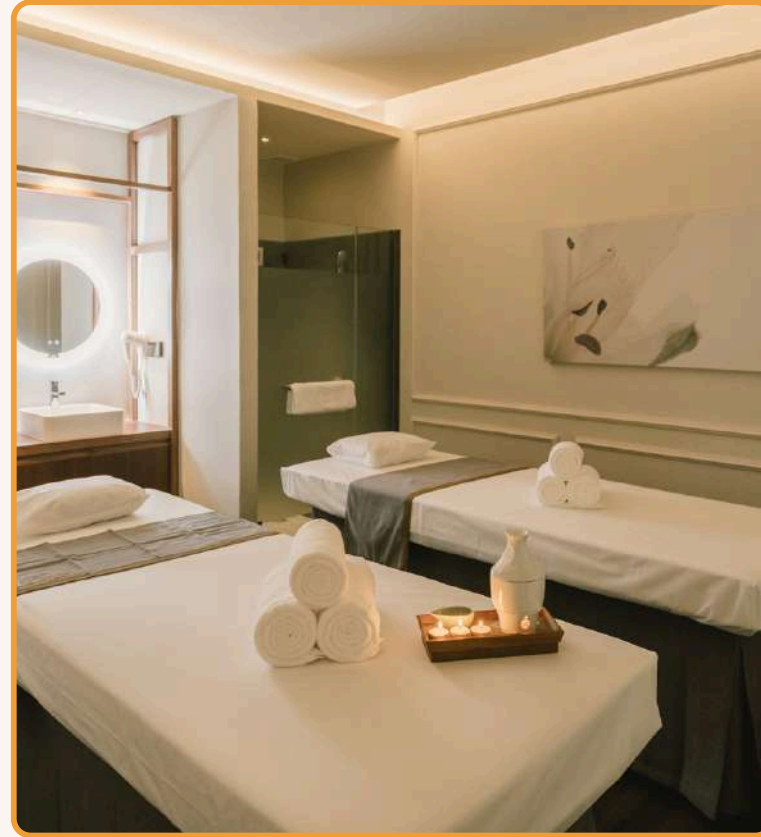
- Deluxe room (44 sqm): city view
- Premium room (44 sqm): city view
- Executive room (62 sq.m): City view

LOCATION

299 Surawong Road, Bangrak, Bangkok
~ 550 m walk to Surasak BTS and river transport,



Bangkok Accommodations



GRANDE CENTRE POINT SURAWONG 5*

F&B OUTLETS

HUA Restaurant: All-day dining

Bangrak Grill: Sleek rooftop American steakhouse offering sweeping city and Chao

Phraya River views

MEETING & EVENT

5 spaces with natural daylight, all on one floor with a communal pre-function area and dedicated coffee station:

Mekha Ballroom (262 sqm): 150 seats

Mekha 1 (100 sqm): 60 seats

Mekha 2 (162 sqm): 90 pax

Dara & Napha (each 53 sqm): 40 pax

Tiva (107 sqm): 80 pax



Bangkok Accommodations



HOLIDAY INN BANGKOK SILOM BY IHG 4*

OVERVIEW

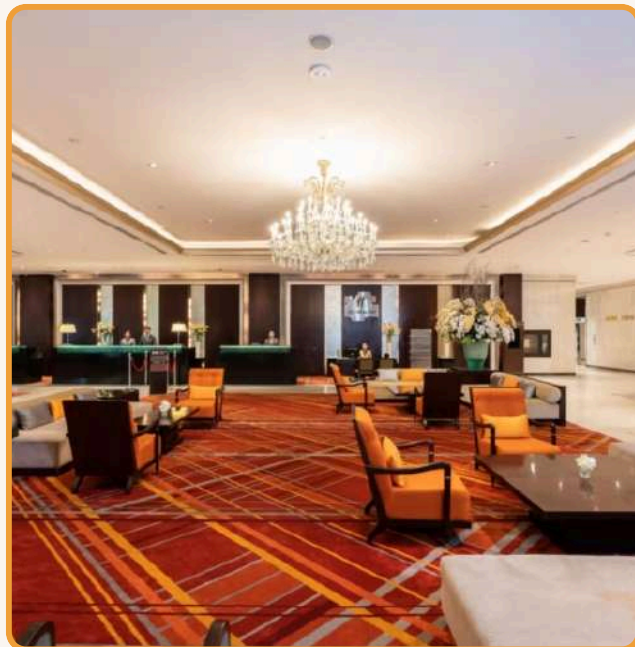
Set in the heart of Silom's Jewelry District, Holiday Inn Bangkok Silom delivers scale and convenience for groups with 684 rooms, easy BTS access, and a versatile events portfolio featuring two ballrooms (up to 550 banquet / 850 cocktail). Guests enjoy a well-rounded F&B lineup—from The Brasserie's all-day buffets to a lively lobby bar—plus leisure perks like an outdoor pool and tennis court, making it a practical, value-driven base for conferences, incentives, and city programs

NUMBER OF ROOMS: 684 ROOMS

- Standard room: 30-32sqm, city view
- Premium room: 36sqm, city view
- Suite room: 57sqm, city view

LOCATION

981 Silom Rd, Bangkok, city central located.
~7-minute walk to BTS Surasak station.
Nearby: Jewelry Trade Center next door



Bangkok Accommodations



GRANDE CENTRE POINT SURAWONG 5*

F&B OUTLETS

- The Brasserie: all-day dining, 160 seats.
- Hari's Bar: cocktails, bar bites, live music, daily Happy Hour
- Aqua Terraza Pool Bar – 6th-floor pool deck

MEETING & EVENT

11 meeting rooms, 2 grand ballrooms:

* Silom Ballroom (867sqm): size (45/49/3), 550 seats

* Crystal Ballroom (355sqm): size (29.95/11.85/4.5), 250 seats



CHIANG MAI ACCOMMODATIONS



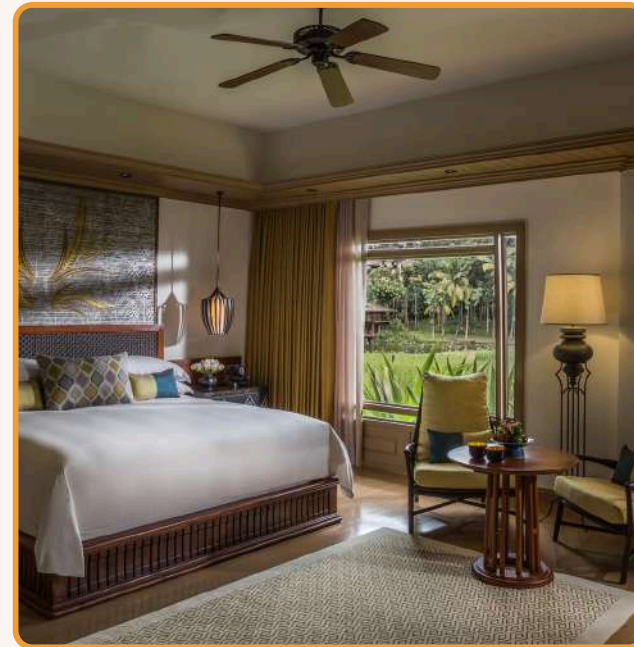
auroratravel.asia



THE MIX OF CULTURAL HERITAGE AND PICTURESQUE SCENERY



CHIANG MAI Accommodations



FOUR SEASONS RESORT CHIANG MAI 5* LUXURY

OVERVIEW

Set in Chiang Mai's picturesque Mae Rim Valley, Four Seasons Resort offers 98 elegant villas and residences surrounded by rice fields. Blending luxury with authentic Lanna heritage, the resort delivers exceptional service, wellness journeys, and cultural experiences. With stunning indoor and outdoor venues, it is the perfect destination for weddings, celebrations, and exclusive retreats.

NUMBER OF ROOMS: 98 ROOMS

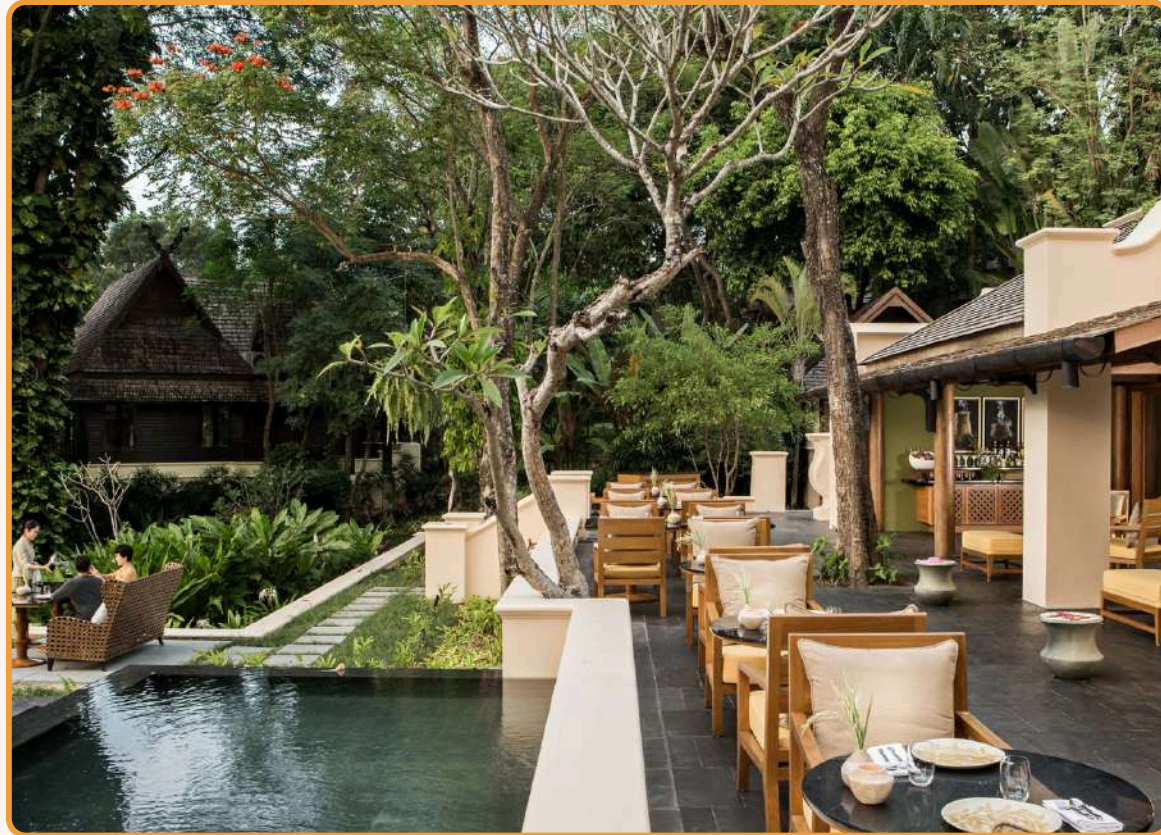
- 99 spacious rooms
- 64 Pavilions
- 12 Pool Villas
- 23 Private Residences

LOCATION

Mae Rim-Samoeng Old Road, Mae Rim, Chiang Mai
30 minutes from city center



CHIANG MAI Accommodations



FOUR SEASONS RESORT CHIANG MAI 5* LUXURY

F&B OUTLETS

- Rim Tai Kitchen: A lush, open-air dining space, 120 seats
- Terraces: the finest Italian cuisine, served al fresco
- Ratre Bar and Lounge: A spacious lounge area (~450 m²)
- In-Pavilion Dining, served around the clock

MEETING & EVENT

- 455 sqm focused in two unique indoor meeting spaces
- Outdoor terraces and gardens for receptions and dinners



CHIANG MAI Accommodations



ANANTARA CHIANG MAI RESORT 5* LUXURY

OVERVIEW

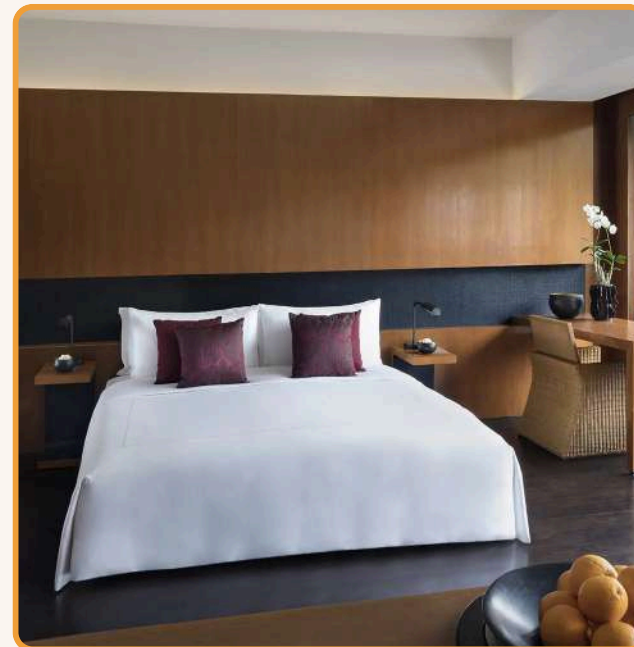
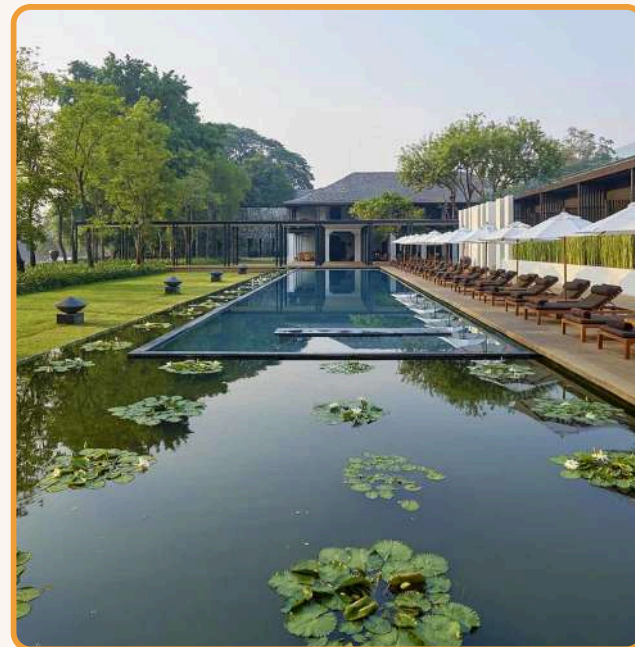
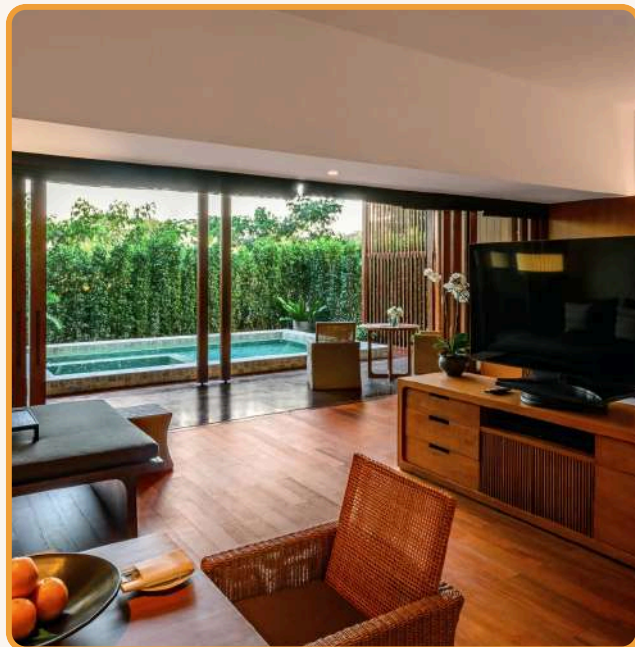
Set in the cultural heart of Chiang Mai, Anantara Chiang Mai Resort features 84 refined rooms and suites. Blending colonial heritage with Kerry Hill's serene design, the resort offers riverside dining at Bodhi Terrace, signature experiences at Service 1921, and elegant event spaces. Just minutes from temples, markets, and the airport, it is your gateway to luxury and discovery.

NUMBER OF ROOMS: 84 ROOMS

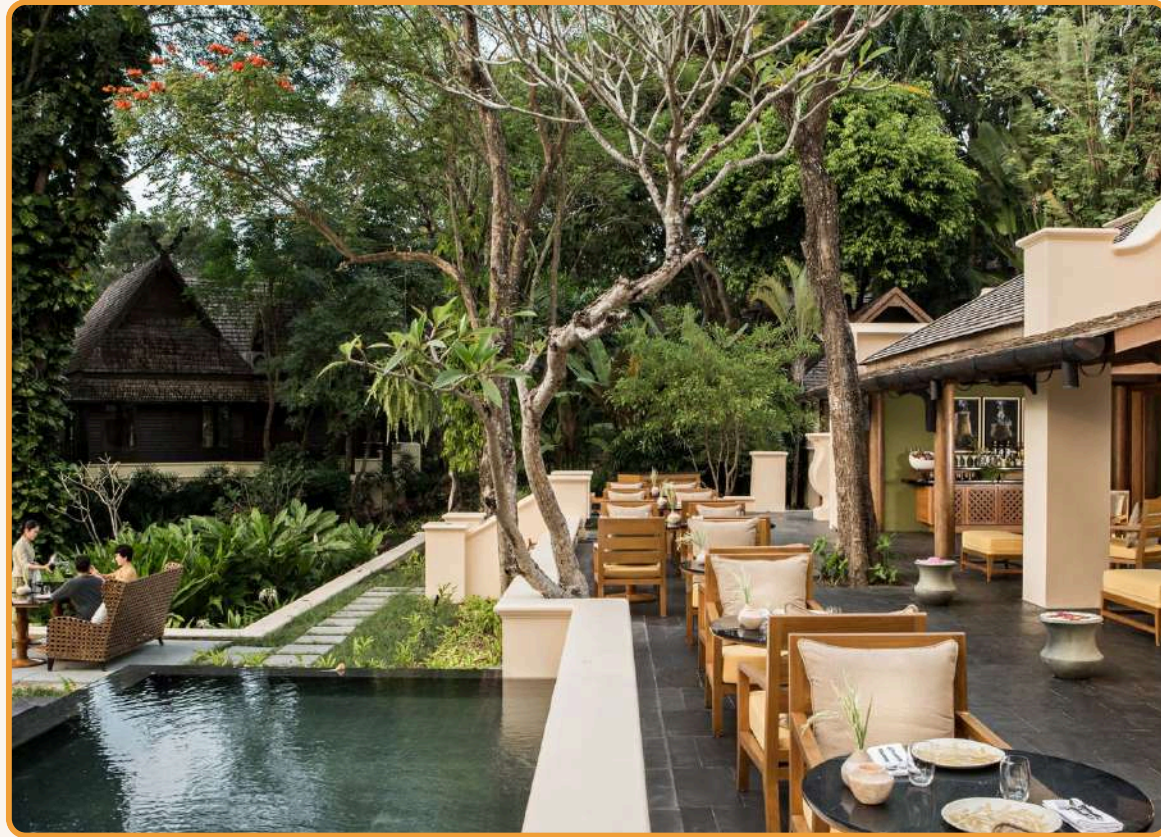
- total 84 rooms:
- * 52 Deluxe Rooms: 50sqm
 - * 32 Kasara Suites: 105sqm

LOCATION

Mae Ping River's banks, in central Chiang Mai



CHIANG MAI Accommodations



ANANTARA CHIANG MAI RESORT 5* LUXURY

F&B OUTLETS

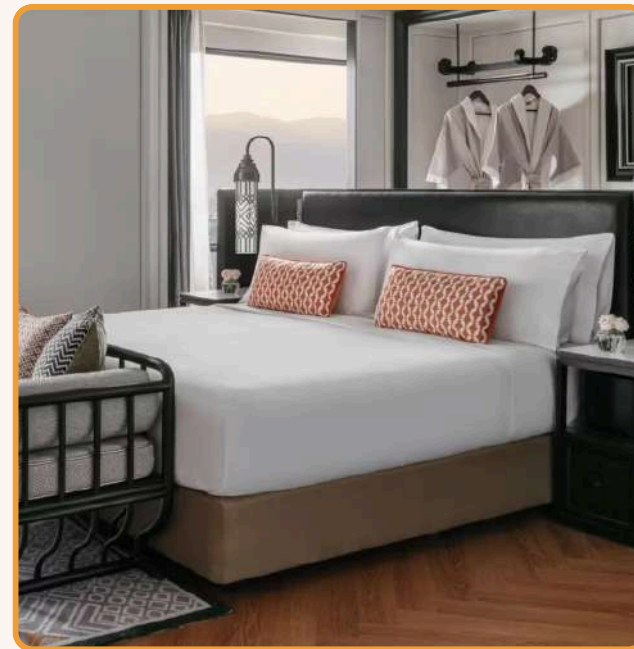
- * The Restaurant: all-day dining
- * The Service 1921 Restaurant & Bar: An old Colonial House, capacity 110 seats| cuisine: Thai, Chinese Szechuan, and Vietnamese

MEETING & EVENT

- * The Meeting Room (114sqm): size (10.55 x10.8 x 3.0), max 56 seats



CHIANG MAI Accommodations



INTERCONTINENTAL CHIANG MAI THE MAE PING - IHG 5* LUXURY

OVERVIEW

InterContinental Chiang Mai The Mae Ping offers 240 elegant rooms and suites, diverse dining from Gad Lanna to the rooftop Sky Bar, and 24,000 sq ft of event space including a grand ballroom and heritage garden. Located in the historic quarter near temples, markets, and just minutes from the airport, it's ideal for stylish stays, meetings, and celebrations.

NUMBER OF ROOMS: 240 ROOMS

Total: 240 guest rooms and suites

- * Classic room: 30 – 43 sqm
- * Premium room: 30 – 44 sqm
- * Ambassador Suite: 114 sqm
- * Presidential Suite: 165 sqm

LOCATION

153 Sridonchai Road, Chang Khlan, Chiang Mai
heart of the historic district, within walking distance to night markets, temples

F&B OUTLETS

2 Dining venues including Chinese Cuisine and Northern Thai Grilled

- Lobby Lounge, Poolside Bar
- A rooftop bar:boasting dramatic views of Chiang Mai and surrounding hills

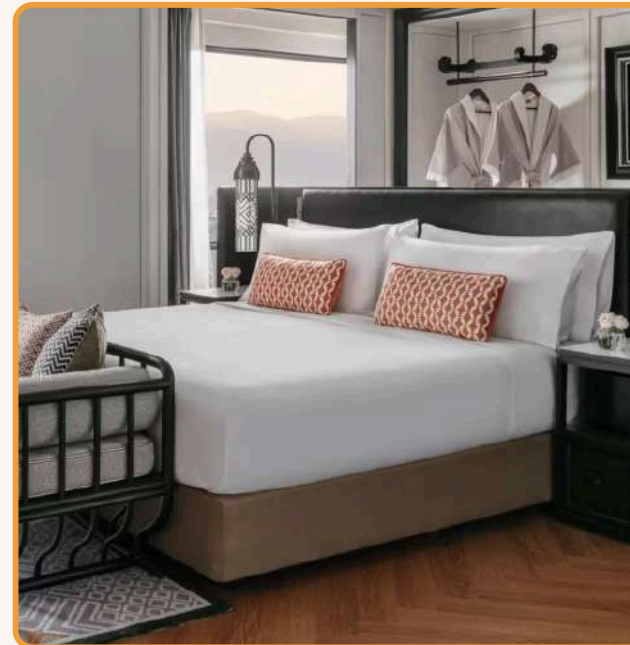
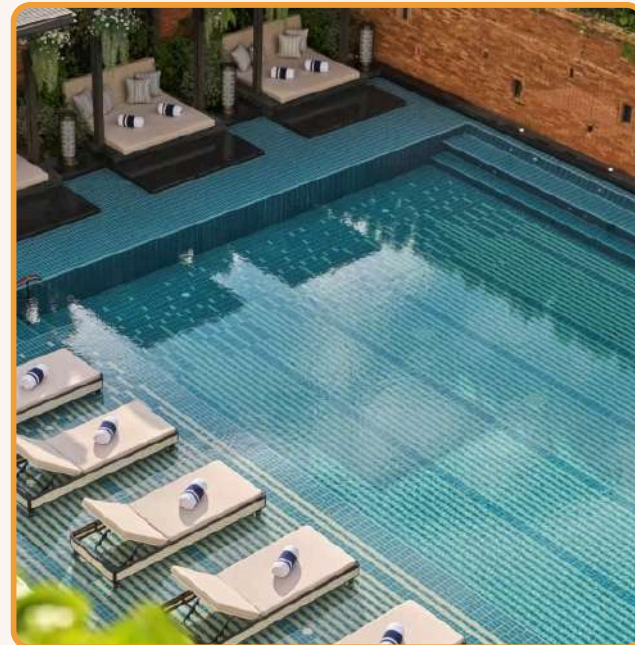
MEETING & EVENT

Total 6 indoor spaces and an outdoor lawn

- * Grand Ballroom: 300 seats
- * The Lawn: 120 seats



CHIANG MAI Accommodations



SHANGRI-LA CHIANG MAI 5* LUXURY

OVERVIEW

An urban resort steps from Chiang Mai's Night Bazaar, Shangri-La Chiang Mai delivers big-hotel muscle with resort ease: 277 rooms and suites, the city's largest free-form pool, four dining venues, and one of the North's most capable event complexes—including a dramatic 9-metre-high ballroom and a 99-seat purpose-built auditorium

NUMBER OF ROOMS: 281 ROOMS

- total: 281 rooms & suites
- * 188 deluxe room: 43sqm
- * 28 premier room: 58sqm
- * 4 executive suite: 86sqm

LOCATION

89/8 Chang Klan Road, Muang, Chiang Mai
walking distance to the Night Bazaar & old city

F&B OUTLETS

- * Kad Kafé: All-day dining| 248 seats
- * China Kitchen: Chinese cuisine| 97 seats
- * Silapa Thai: Thai cuisine|144 seats

MEETING & EVENT

- * Grand Lanna Ballroom (1,115sqm): size (59 × 25 m x 9.0 m)| 900 seats
- * Lanna Ballroom I-III (505 sqm/each): 320 seats
- * Sukhothai Room *425sqm): size (24.5 × 17.3 m x 4m)| 220 seats



CHIANG MAI Accommodations



SHANGRI-LA CHIANG MAI 5* LUXURY

F&B OUTLETS

- * Kad Kafé: All-day dining| 248 seats
- * China Kitchen: Chinese cuisine| 97 seats
- * Silapa Thai: Thai cuisine|144 seats

MEETING & EVENT

- * Grand Lanna Ballroom (1,115sqm): size (59 × 25 m x 9.0 m)| 900 seats
- * Lanna Ballroom I-III (505 sqm/each): 320 seats
- * Sukhothai Room *425sqm): size (24.5 × 17.3 m x 4m)| 220 seats



CHIANG MAI Accommodations



RATILANNA RIVERSIDE SPA RESORT CHIANG MAI 5*

OVERVIEW

Nestled serenely on the tranquil banks of the Ping River, Ratilanna Riverside Spa Resort is a boutique Lanna-inspired retreat just minutes from Chiang Mai's famed Night Bazaar and Old City. With 75 artfully designed rooms and suites, riverside dining, an award-winning spa, and flexible meeting event spaces.

NUMBER OF ROOMS: 75 ROOMS

- 75 units in total:
- * 56 Deluxe rooms
- * 17 Deluxe Suite
- * 1 Riverside Garden Suite
- * 1 Riverside Pool Suite

LOCATION

3 Chang Klan Road, Chiang Mai
5-minute drive is Chiang Mai Night Bazaar, Old city

F&B OUTLETS

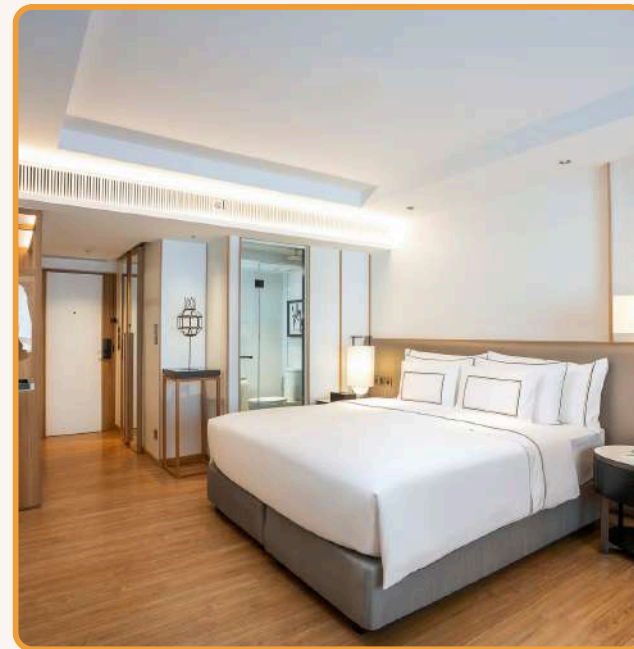
- * Mira Terrace: a charming all-day dining riverside restaurant| 110 seats
- * Marlin Pavillion Lounge: 36 seats

MEETING & EVENT

- * 03 meeting rooms, the large's capacity is 90 seats
- * Riverside lawn: capacity 90 seats for dinner



CHIANG MAI Accommodations



MELIA CHIANG MAI HOTEL & RESORT 5*

OVERVIEW

Overlooking the Ping River and Night Bazaar, Meliá Chiang Mai features 254 rooms and suites, a rooftop bar, diverse dining, and event facilities including a ballroom for 400 guests—blending Spanish flair with Northern Thai charm for business and leisure.

NUMBER OF ROOMS: 245 ROOMS

239 rooms + 6 suite in total:

- * Melia room: 30 sqm
- * Deluxe room: 35 sqm
- * Premium room: 45 sqm

LOCATION

46–48 Charoen Prathet Road, Chang Khlan, Chiang Mai
Overlooks the Ping River, close to night Bazaar, Old City

F&B OUTLETS

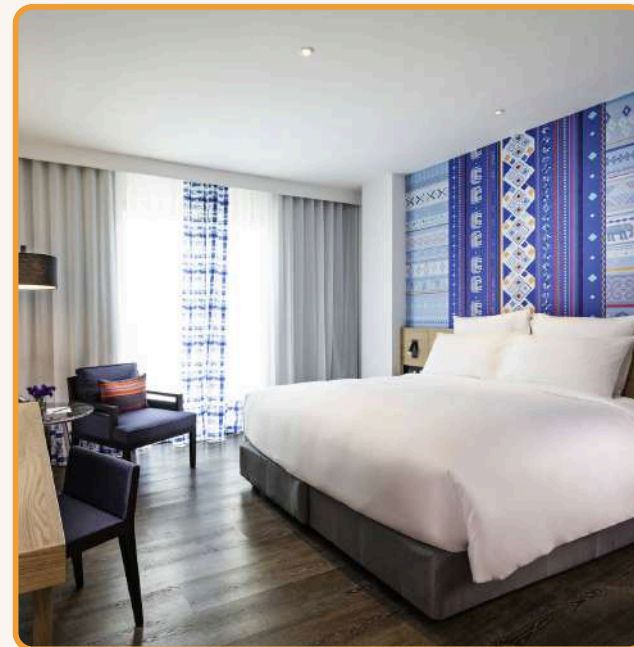
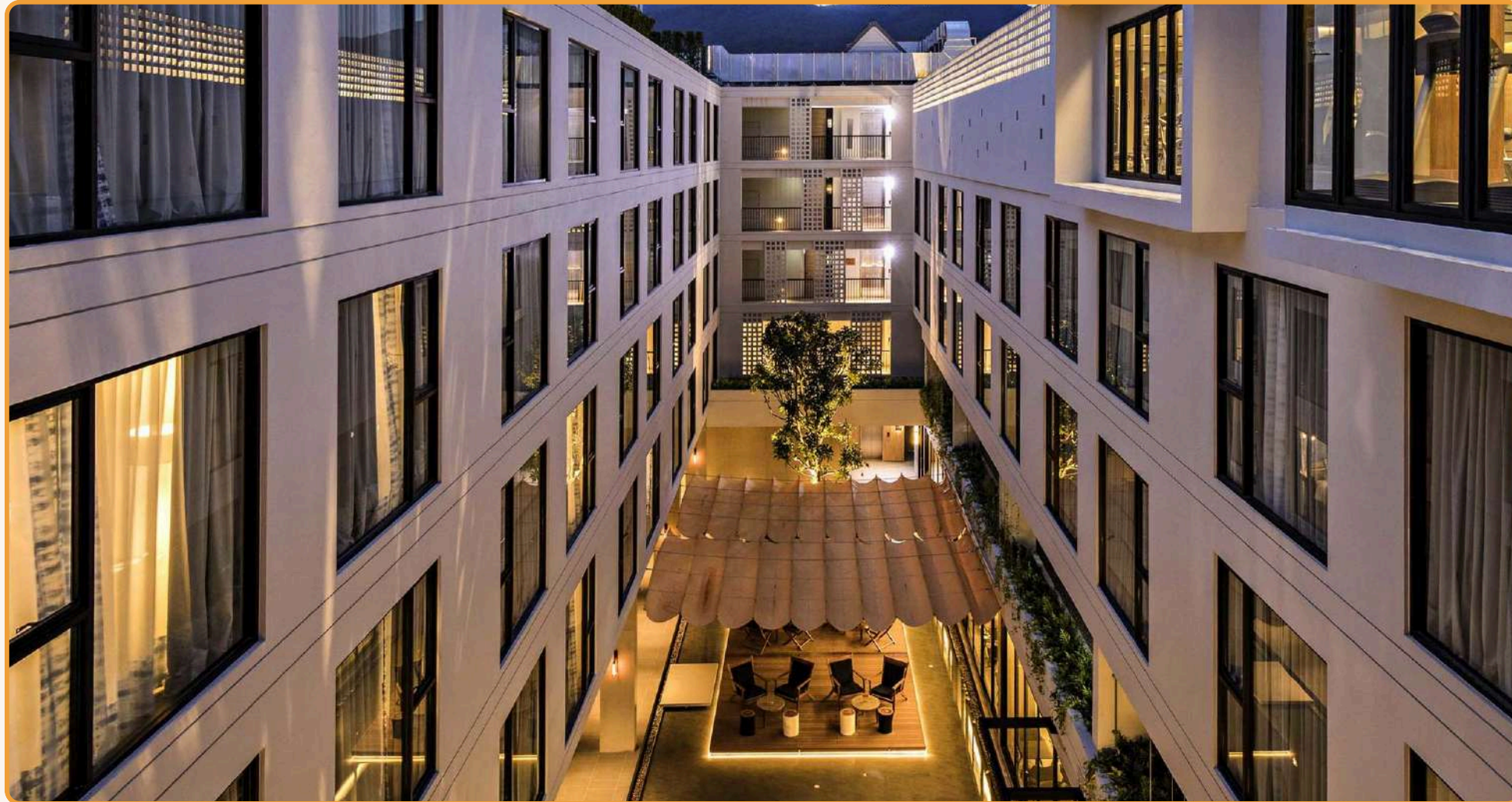
- * Laan Na Kitchen: all-day buffet
- * Mai Restaurant & Bar: on 21st floor, Thai & Mediterranean cuisine
- * Mai The Sky Bar: on 22nd floor, panoramic views of the city and the Ping River

MEETING & EVENT

- * Yi Peng Grand Ballroom (358 m²): 250 seats
- * Khom Room (185 sqm): 120 seats



CHIANG MAI Accommodations



NOVOTEL NIMMAN HOTEL CHIANG MAI 4*

OVERVIEW

Located in Nimman's creative district, Novotel Chiang Mai Nimman Journeyhub offers 202 modern rooms, a rooftop pool with city views, vibrant dining, and event spaces up to 300 m²—perfect for business travelers, families, and boutique events.

NUMBER OF ROOMS: 202 ROOMS

- * Superior room: 28 sqm
- * Deluxe room: 28 sqm
- * Deluxe terrace: 28 sqm
- * Executive Corner Room: 32 sqm

LOCATION

- Moo 2, Huay Kaew Road, Soi Sreesud, Chiang Mai
- * 2-minute walk to Nimmanhaemin lifestyle district
- * 5-minute walk to Maya Mall

F&B OUTLETS

- * Food Exchange: All-day dining
- * Gourmet Bar: The lively social hub

MEETING & EVENT

- * Meeting Room 1 (75 sqm), 40 seats
- * Meeting Rooms 2–3 (225 m²): 80 seats
- * Meeting Rooms 1–4 (300 m²): 120 seats



CHIANG MAI Accommodations



MÖVENPICK SURIWONGSE CHIANG MAI HOTEL 4*

OVERVIEW

Located near the Night Bazaar, Mövenpick Suriwongse Chiang Mai combines Lanna-inspired design with modern Swiss comfort. With 262 rooms, a rooftop oasis, diverse dining, and flexible event spaces, it's an ideal urban retreat for business and leisure travelers alike.

NUMBER OF ROOMS: 262 ROOMS

- * Deluxe room: 30 sqm
- * Superior room: 32 sqm
- * Classic room: 30 sqm
- * Premium king: 45 sqm
- * Junior Suite: 45 sqm

LOCATION

110 Chang Klan Road, Muang, Chiang Mai
close to Night Bazaar

F&B OUTLETS

- * Fueng Fah Restaurant: all-day dining
- * Le Bistrot & Terrace: Italian-Thai fusion set on a terrace overlooking the Night Bazaar
- * Wine Bar: A chic terrace bar with world-beat DJs

MEETING & EVENT

- 4 meeting rooms
- * Navarat Ballroom (193 sqm): capacity 160 pax



PHUKET ACCOMMODATIONS



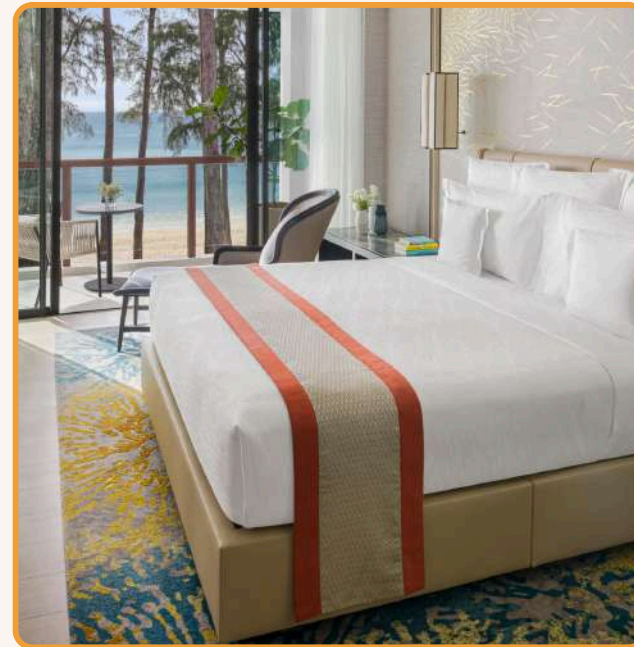
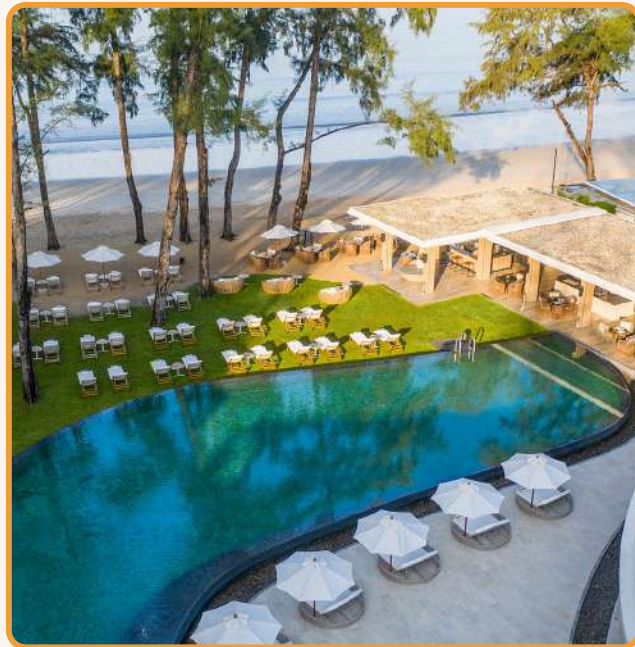
auroratravel.asia



THE FUSE OF COASTAL BEAUTY AND BUSTLING NIGHTLIFE



Phuket Accommodations



INTERCONTINENTAL PHUKET

NUMBER OF ROOMS

- Classic/ Pool View/ Mountain View Rooms (43m²)
- Classic Pool/ Premium Pool Access Rooms (43/ 46m²)
- Premium Ocean View Club Lounge Access Rooms (46m²)
- Lagoon Villa Club Lounge Access (104m²)
- Beachside Suite Ocean View Club Lounge Access (60m²)
- One/ Two/ Three Bedroom Pool Villa Club Lounge Access (210/ 260/ 360m²)

LOCATION

Nestled amidst the forested hills of Kamala Bay with panoramic views of the Andaman Sea

BALLROOM

- Capacity for up to 220 people
- Ceiling height up to 4.2 meters



Phuket Accommodations



INTERCONTINENTAL PHUKET RESTAURANTS & BARS

RESTAURANT & BAR

- Jaras Restaurant: International cuisine
- Pine Beach Bar: Brunch
- Malin Pavillion: Cocktail and wine



Phuket Accommodations



ANGSANA LAGUNA PHUKET

NUMBER OF ROOMS

- 199 Laguna Room
- 45 Laguna Grand Room
- 16 Laguna Poolside Room
- 47 Laguna Premier Room
- 35 Angsana One Bedroom Loft
- 22 Two Bedroom Island Duplex
- 21 Two bedroom Island Suite
- 1 Grand Angsana Suite
- 6 Two Bedroom Pool Suite Lagoon View
- 3 Two Bedroom Pool Suite Beach View
- 3 Three Bedroom Pool Suite Beachfront

LOCATION

Located on Bang Tao Bay and the blue waters of the Andaman Sea.

BALLROOM

- Capacity for up to 1500 people



Phuket Accommodations



ANGSANA LAGUNA PHUKET RESTAURANTS & BARS

RESTAURANT

- Azura Restaurant: Italian cuisine
- XANA: Fusion cuisine and drinks
- Market Place: Thai cuisine
- Bodega & Grill: Fusion cuisine

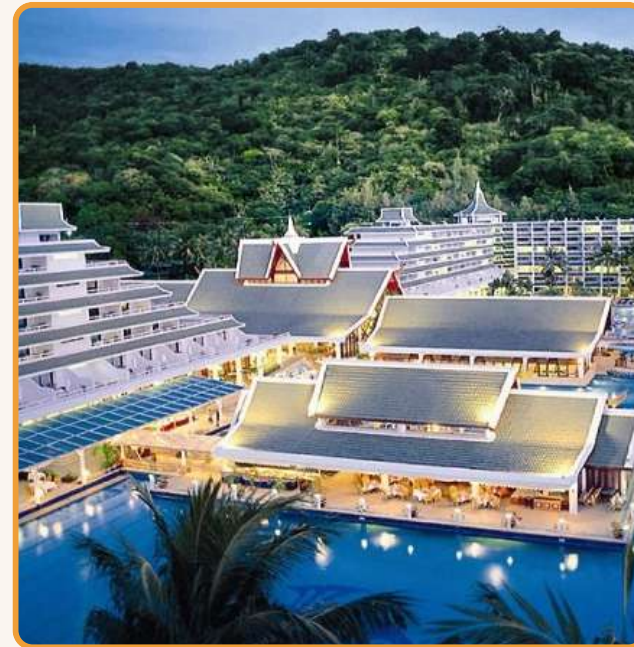


BAR & LOUNGE

- Poolside: Snacks and drinks
- Loy Krathong Bar: Snacks and drink



Phuket Accommodations



LE MERIDIEN PHUKET BEACH

NUMBER OF ROOMS

- Deluxe Garden/ Pool View Rooms (37m²)
- Deluxe Ocean View Rooms (38m²)
- Junior Suites (47m²)

LOCATION

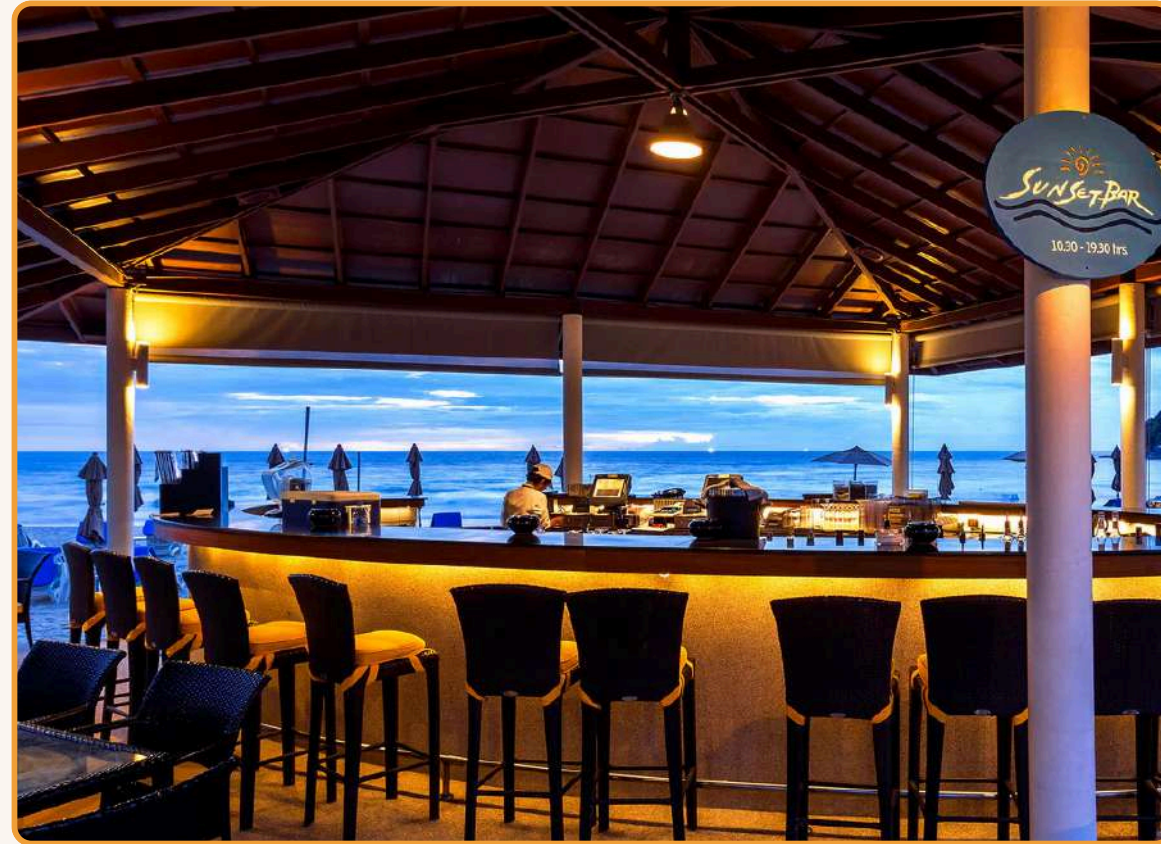
The Resort is located on a lush cove on a secluded, It is more privacy free from usual tourist distractions

BALLROOM

- Capacity for up to 1500 people



Phuket Accommodations



LE MERIDIEN PHUKET BEACH RESTAURANTS & BARS

RESTAURANT

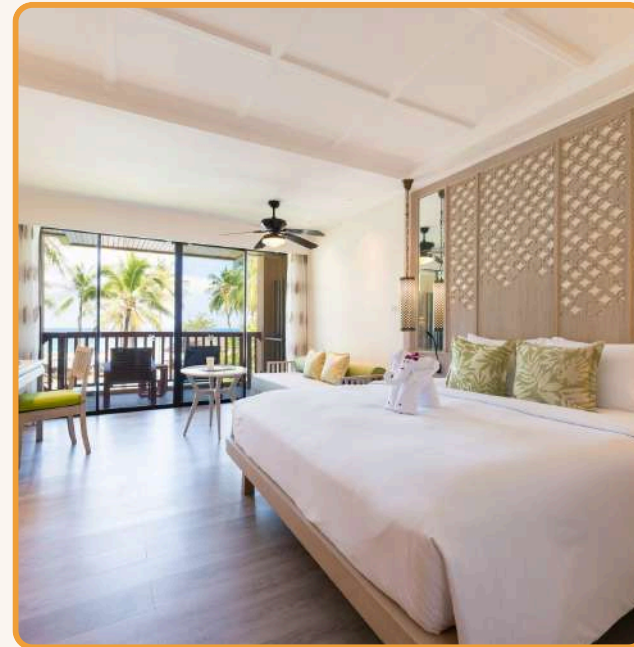
- Ariake Japanese: Japanese cuisine
- Beach BBQ: Seafood and Grill
- La Fiamma: Pizza menu
- Latest Recipe: International cuisine
- Pakarang Restaurant: International cuisine
- Portofino: Italian cuisine
- Wang Warin: Thai cuisine

BAR & LOUNGE

- Poolside: Snacks and drinks
- Loy Krathong Bar: Snacks and drink



Phuket Accommodations



KATATHANI PHUKET BEACH

NUMBER OF ROOMS

- Deluxe Room (40m2)
- Deluxe Pool (40m2)
- Grand Deluxe (50m2)
- Junior Suite – Thani Wing (45m2)
- Junior Suite Oceanfront – Thani Wing (50m2)

LOCATION

The Resort is located on a lush cove on a secluded, It is more privacy free from usual tourist distractions

BALLROOM

- Capacity for up to 980 people
- Ceiling height up to 16.4 meters



Phuket Accommodations



KATATHANI PHUKET BEACH RESTAURANTS & BARS

RESTAURANT

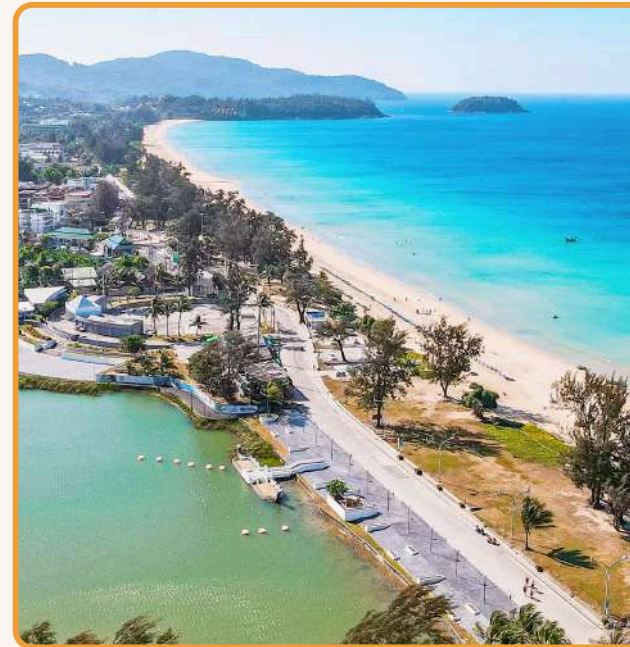
- Chom Talay: Thai and Western cuisine
- Fisherman's Wharf: Seafood
- La Scala: Western cuisine
- Chanadda: Thai cuisine
- Seaside: Italian cuisine
- Seacret: Phuket-styled cuisine
- Wang Warin: Thai cuisine

BAR & LOUNGE

- Coconut Bar: Snacks and drinks
- Mango Bar: Snacks and drinks
- Pineapple Bar: Snacks and drinks
- Palm Bar: Snacks and drinks
- Beach Club Bar: Snack and drinks
- Lobby Lounge: Drinks: Snacks and drinks



Phuket Accommodations



HOLIDAY INN RESORT PHUKET KARON BEACH

NUMBER OF ROOMS

- 1 Bedroom Villa Plunge Pool (60m²)
- 1 Bedroom Villa (52m²)
- 1 Bedroom Suite (52m²)
- 1 King 1 Bunk Family Suite (38m²)
- 1 King 1 Bunk Premium (33m²)
- 1 King Premium (33m²)
- 1 King Standard Plunge Pool Central Building (28m²)
- 2 Twin Standard Bathtub Central Building (28m²)
- 1 King Standard Central Building (28m²)
- 2 Twin Standard Central Building (28m²)
- 1 King Standard (28m²)
- 2 Twin Standard (28m²)

LOCATION

60-minute drive from Phuket International Airport

BALLROOM

- Capacity for up to 36 people



Phuket Accommodations



HOLIDAY INN RESORT PHUKET KARON BEACH RESTAURANTS & BARS

RESTAURANT

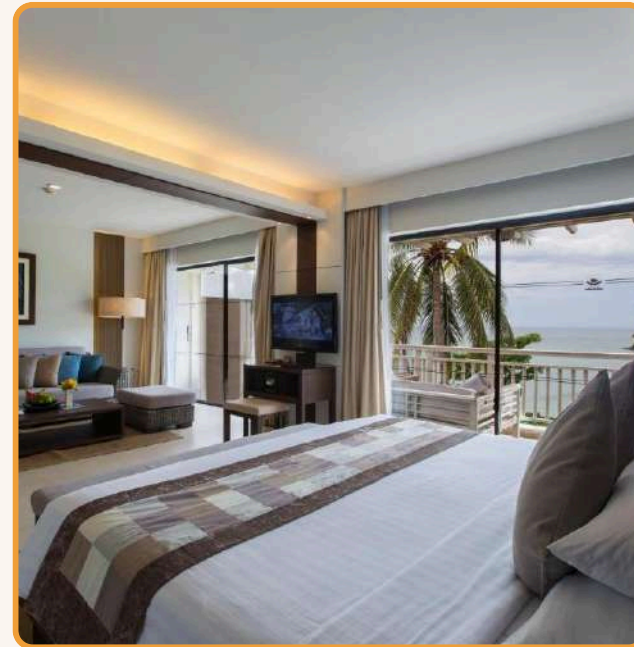
- Horizon Restaurant: International cuisine
- Chef's Table: Thai cuisine

BAR & LOUNGE

- Joe Kool's Pool Bar: Snacks and drinks
- Pool Bar: Snacks and drinks
- Champions Bar: Snacks and drinks



Phuket Accommodations



CAPE PANWA HOTEL PHUKET

NUMBER OF ROOMS

- 55 Junior Suite (53m²)
- 126 Cape Suite (78m²)
- 2 Cape Signature Corner Suite (127m²)
- 12 Family Suite (114m²)
- 6 Pool Villa (138m²)
- 1 Panwa Lodge (154m²)
- 1 The Cape Absolute Suite (530m²)

LOCATION

Located on the quiet southern tip of the east coast of Phuket Island.

BALLROOM

- Capacity for up to 200 people



KO SAMUI ACCOMMODATIONS



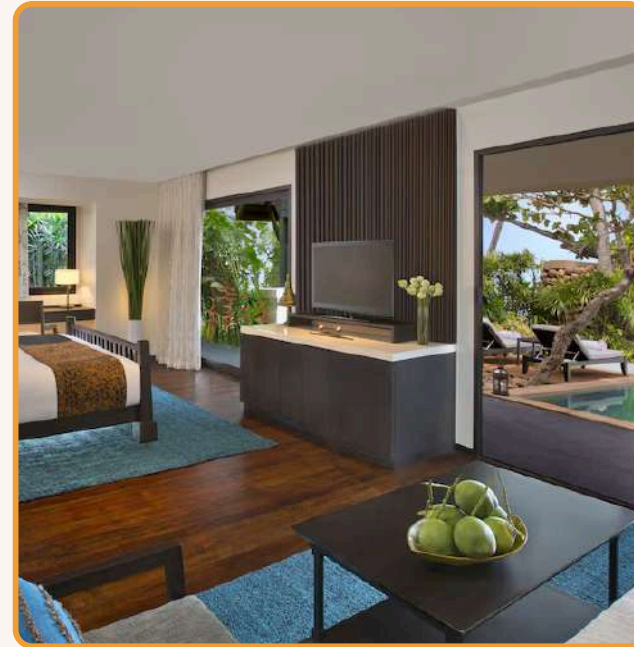
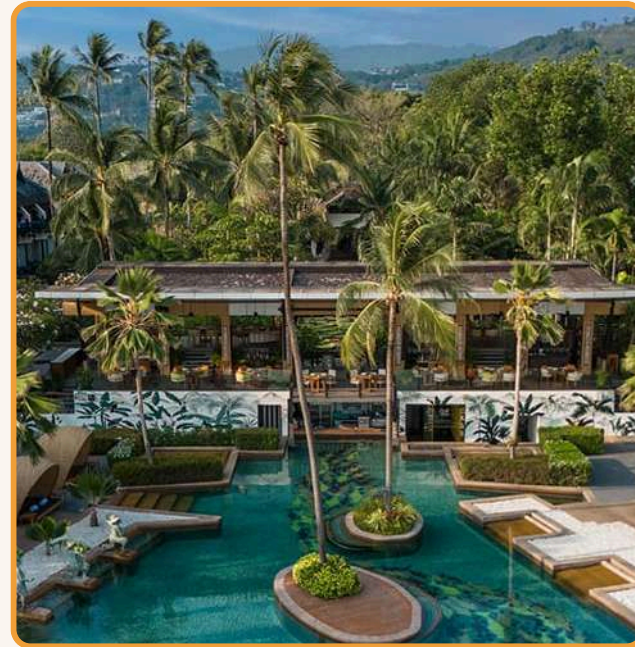
auroratravel.asia



AN UNFORGETTABLE TROPICAL ESCAPE FOR ALL



Ko Samui Accommodations



ANANTARA BOPHUT KOH SAMUI RESORT

NUMBER OF ROOMS

- 26 Premier Garden View (32m²)
- 26 Deluxe Garden View (36m²)
- 8 Deluxe Sea View (36m²)
- 22 Junior Garden Suite (44m²)
- 8 Garden View Suite (64m²)
- 6 Garden Pool Suite (64m²)
- 4 Sea View Suite (64m²)
- 4 Luxury Beach Front View Suite (80m²)
- 2 Luxury Beach Front Pool Suite (80m²)
- 1 Two Bedroom Pool Suite (114m²)

LOCATION

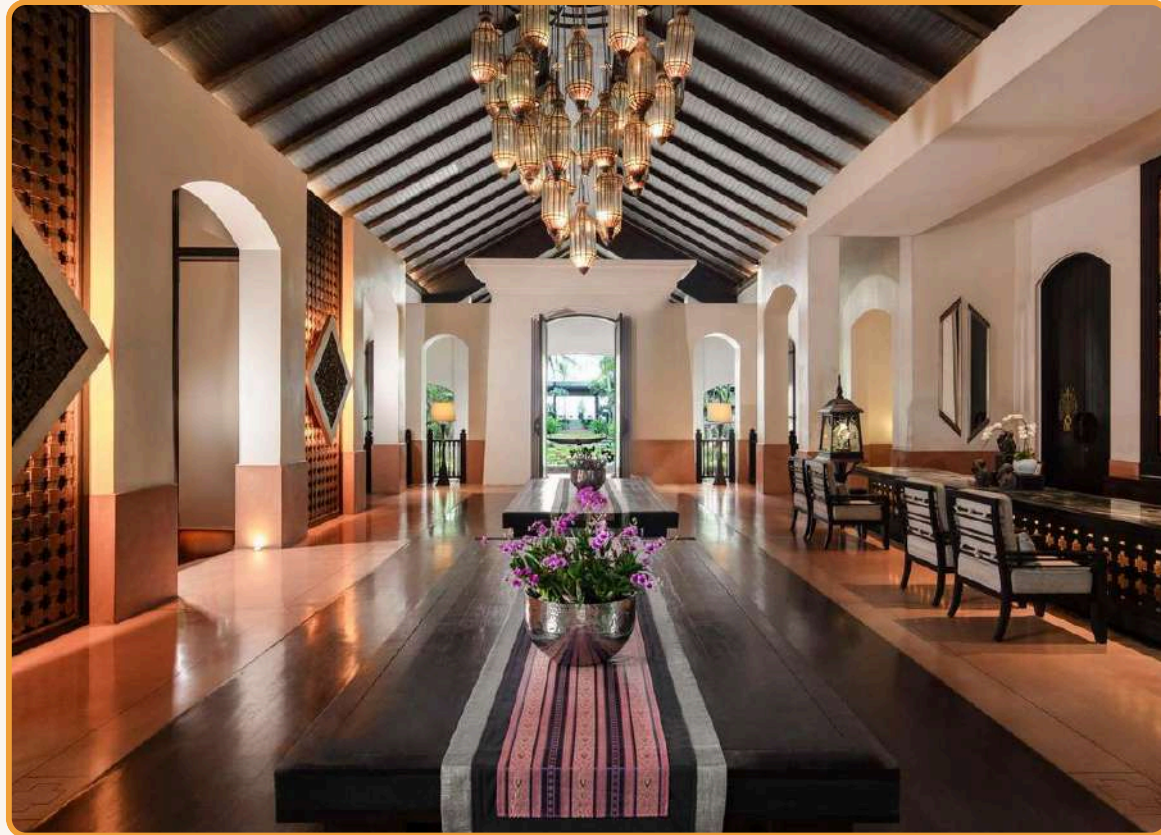
Located near Fisherman's Village, and the island airport is a 15-minute drive

BALLROOM

- Capacity for up to 200 people
- Ceiling height up to 12 meters



Ko Samui Accommodations



ANANTARA BOPHUT KOH SAMUI RESORT RESTAURANTS & BARS

RESTAURANT

- Guilty Samui: Peruvian cuisine
- Thin Tai: Southern Thai cuisine
- Spice Spoons: Thai cooking class and cuisine

BAR & LOUNGE

- TĀN Beach Lounge: Light dining and drink



Ko Samui Accommodations



MELATI BEACH RESORT & SPA

NUMBER OF ROOMS

- 26 Premier Garden View (32m2)
- 26 Deluxe Garden View (36m2)
- 8 Deluxe Sea View (36m2)
- 22 Junior Garden Suite (44m2)
- 8 Garden View Suite (64m2)
- 6 Garden Pool Suite (64m2)
- 4 Sea View Suite (64m2)
- 4 Luxury Beach Front View Suite (80m2)
- 2 Luxury Beach Front Pool Suite (80m2)
- 1 Two Bedroom Pool Suite (114m2)

LOCATION

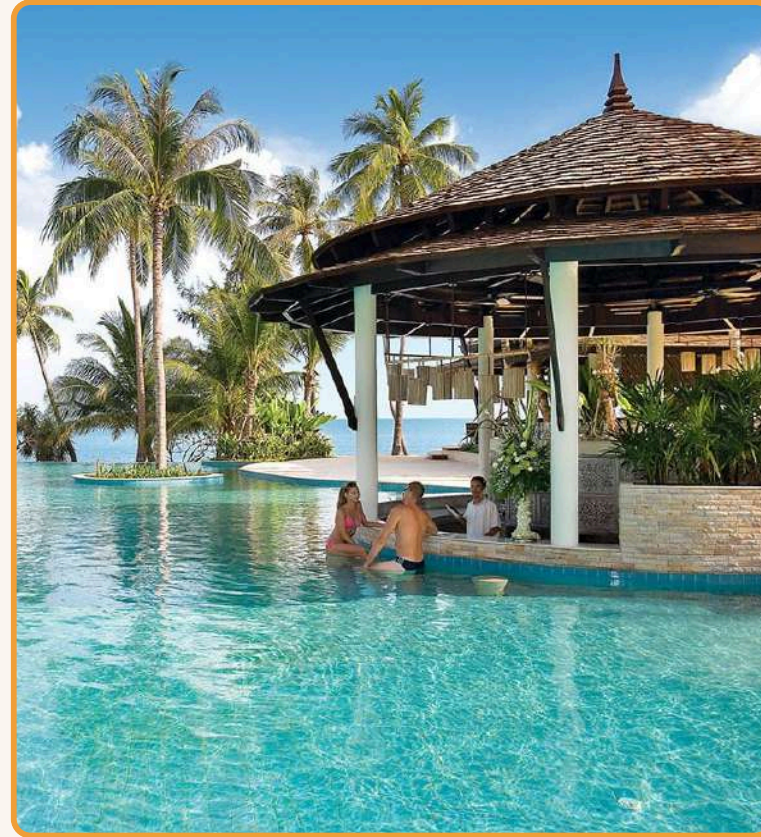
Conveniently located just 15 minutes away from the vibrant nightlife of Chaweng Beach and a short drive from Samui Airport

BALLROOM

- Capacity for up to 80 people
- Ceiling height up to 12 meters



Ko Samui Accommodations



MELATI BEACH RESORT & SPA RESTAURANTS & BARS

RESTAURANT

- The View Restaurant: International, Thai cuisine and seafood
- Kan Sak Thong Restaurant: Fusion cuisine
- Private In Villa BBQ: Grill with a personal chef

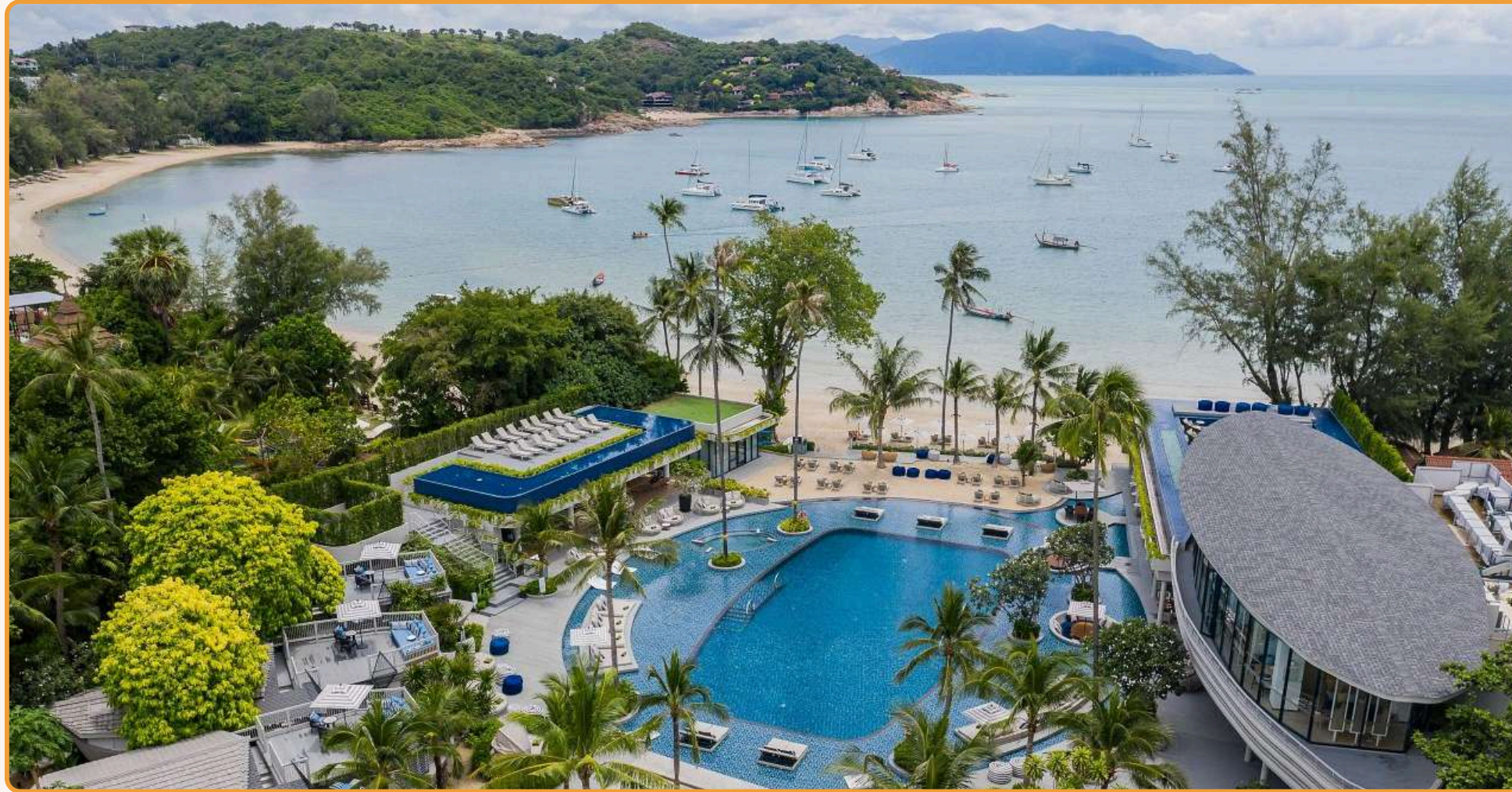


BAR & LOUNGE

- Sea View Bar: Snacks and drinks



Ko Samui Accommodations



MELIA KOH SAMUI

NUMBER OF ROOMS

- Deluxe One/ Two Bedroom (51m²)
- Premium One/ Two Bedroom (52m²)
- Premium Pool Access Room (58m²)
- Premium Pool Side Room (58m²)
- Grand Suite (104m²)
- Duplex Boat Suite (91m²)

LOCATION

Just 5km from the airport, Meliá Koh Samui features highly original and surrounded by wild and lush vegetation

BALLROOM

- Capacity for up to 200 people
- Ceiling height up to 2.75 meters



Ko Samui Accommodations



MELIA KOH SAMUI RESTAURANTS & BARS

RESTAURANT

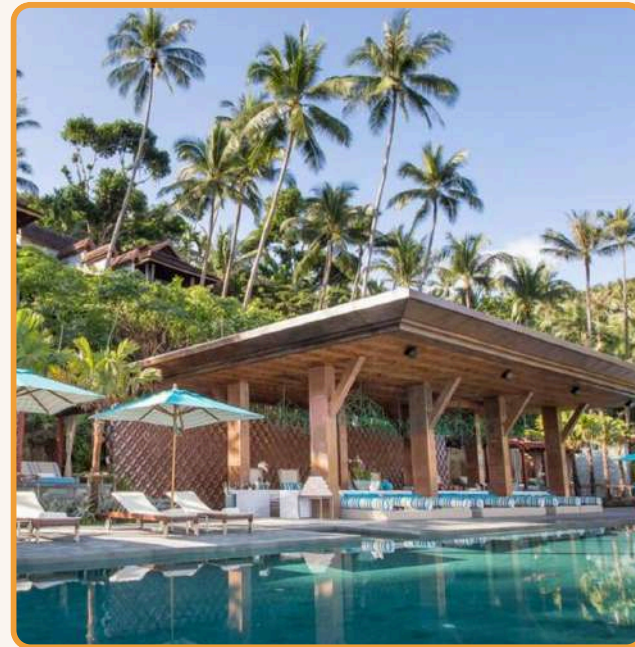
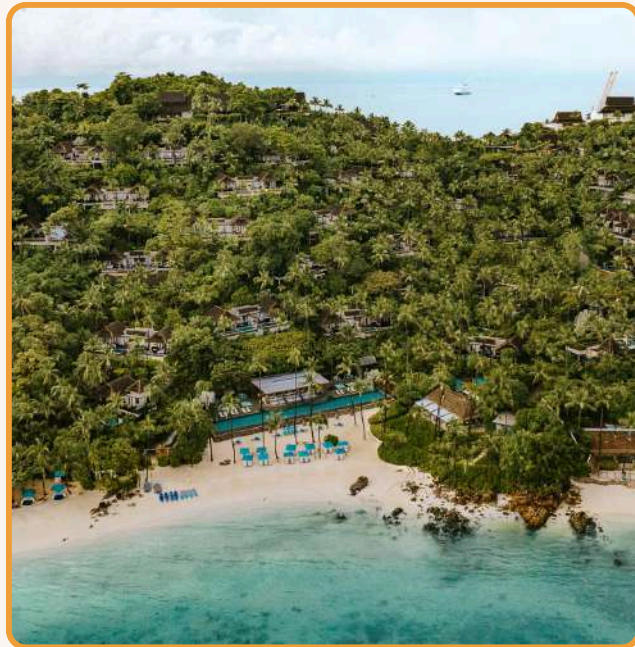
- Koko Kitchen: Thai cuisine
- The Breeza Beach Restaurant & Bar: Thai and Spanish cuisine

BAR & LOUNGE

- Boat's Bar: Coffe and Tea
- Pool Bar: Fresh juices, smoothies and cocktails



Ko Samui Accommodations



FOUR SEASONS RESORT SAMUI

NUMBER OF ROOMS

- Beach Villa with Pool (125m²)
- Ocean Pool Villa (102m²)
- Family Pool Villa (118m²)
- Panoramic Ocean View Pool Villa (103m²)
- Premier Ocean View Pool Villa (103m²)
- Island Ocean Pool Villa (103m²)
- Serenity Pool Villa (103m²)
- Two/ Three/ Four/ Five Bedroom Residence Villa with Pool (757/ 1130/ 1210/ 1503m²)
- Three Bedroom Family Residence Villa with Pool (1130m²)
- Island Residence with Pool (660m²)

LOCATION

Located near main attractions, including historic temples, are a half-hour drive, and Santiburi Samui Country Club is just a 15-minute drive.

BALLROOM

- Capacity for up to 200 people



Ko Samui Accommodations



FOUR SEASONS RESORT SAMUI RESTAURANTS & BARS

RESTAURANT

- Koh Thai Kitchen: Southern Thai cuisine
- Pla Pla: Seafood
- In-Villa Dining: Privat Grill

BAR & LOUNGE

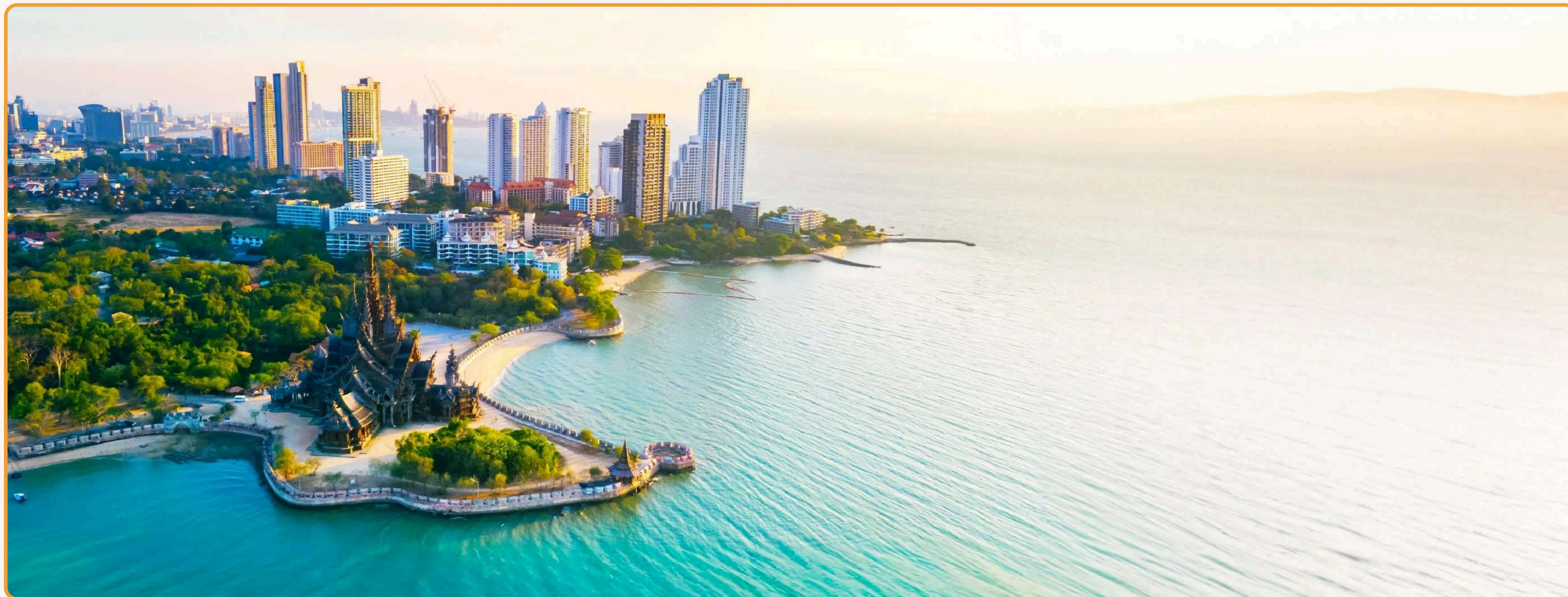
- Koh Bar: Wines and cocktails
- Cocorum: Cocktails and spirits
- Rum Vault: Rum



PATTAYA ACCOMMODATIONS



auroratravel.asia



THE DIVERSE RANGE OF ATTRACTIONS AND ACTIVITIES



Pattaya Accommodations



CENTARA GRAND MIRAGE BEACH RESORT PATTAYA

NUMBER OF ROOMS

- 145 Deluxe Ocean Facing (38m²)
- 128 Deluxe Family (38m²)
- 136 Premium Deluxe (38m²)
- 69 Deluxe Spa (38m²)
- 76 Club Mirage (38m²)
- 18 Club Mirage Suite (84 - 150m²)
- 31 Club Mirage Family Residence Suite (52m²)
- 1 Club Grand Mirage Suite (130m²)
- 5 Club Grand Mirage Duplex Suite (130m²)
- 1 Club Mirage The Royal Suite (197m²)

LOCATION

Set in a multifaceted city with an array of good restaurants and shopping malls

BALLROOM

- Capacity for up to 988 people
- Ceiling height up to 6 meters



Pattaya Accommodations



CENTARA GRAND MIRAGE BEACH RESORT PATTAYA RESTAURANTS & BARS

RESTAURANT

- Oasis: International cuisine
- Acqua: Italian cuisine
- Waves: Coastal and noodle dishes
- In-room dining: International cuisine

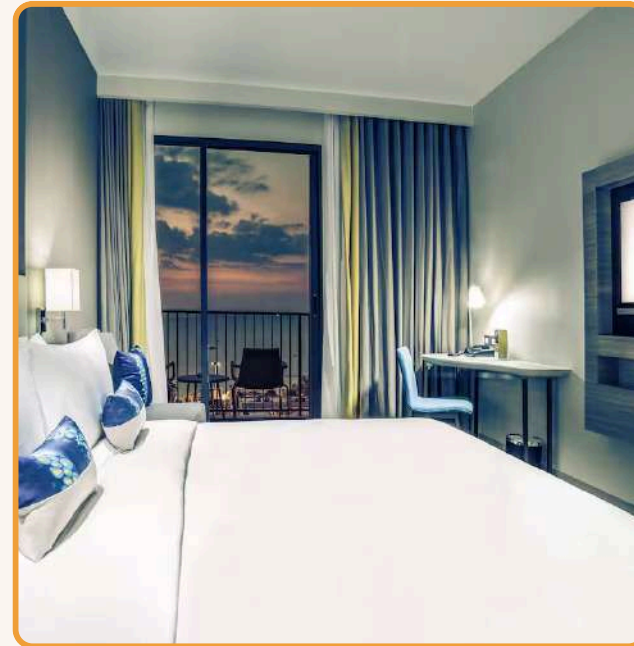


BAR & LOUNGE

- COAST Beach Club & Bistro: Coastal and cocktails
- Vistas: Snacks and drinks



Pattaya Accommodations



MERCURE PATTAYA OCEAN

NUMBER OF ROOMS

- Superior King (26m²)
- Superior Twin (26m²)
- Superior Ocean View King (26m²)
- Deluxe Ocean View King (26m²)
- Deluxe Ocean View Twin (26m²)
- Executive Family Suite (66m²)
- Ocean View Suite (40m²)

LOCATION

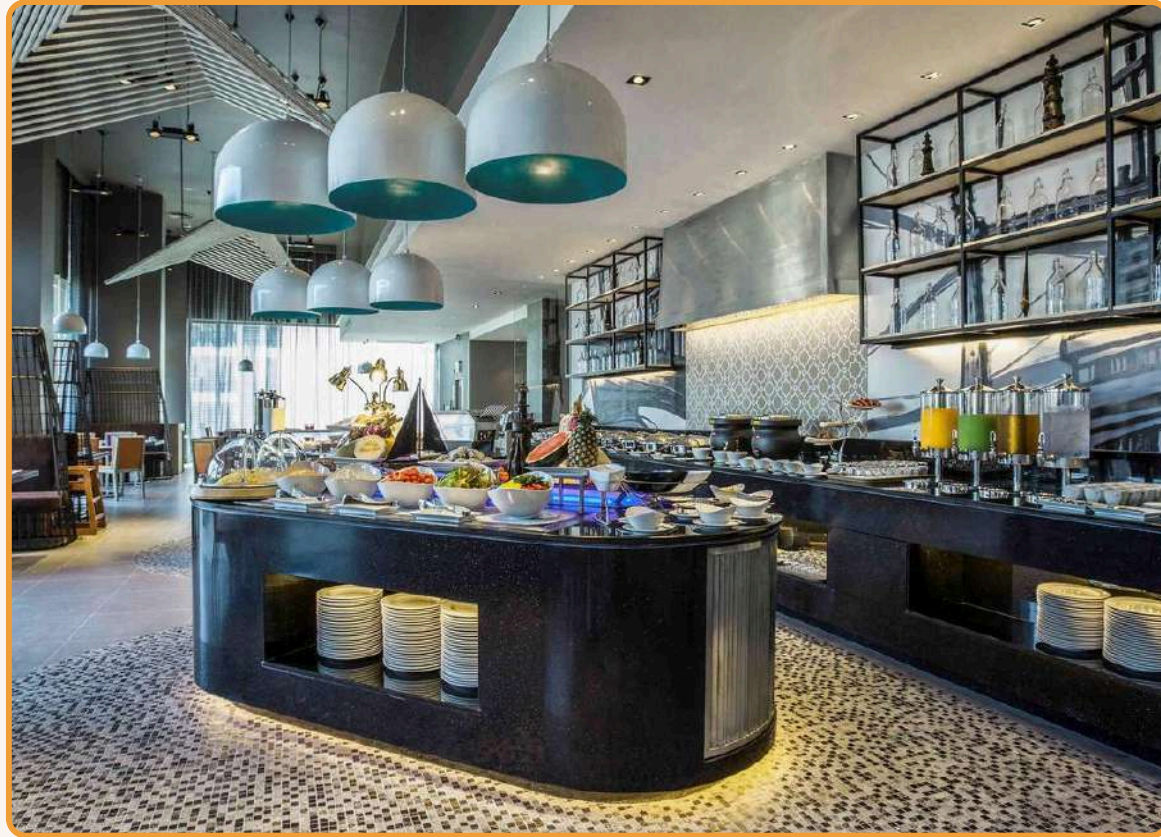
The hotel is located in Northern Pattaya, 2-minute walk from the beach and close to Terminal 21 Pattaya, Central Marina, BigC Supercenter, and Walking Street.

BALLROOM

- Capacity for up to 60 people
- Ceiling height up to 6 meters



Pattaya Accommodations



MERCURE PATTAYA OCEAN RESTAURANTS & BARS

RESTAURANT

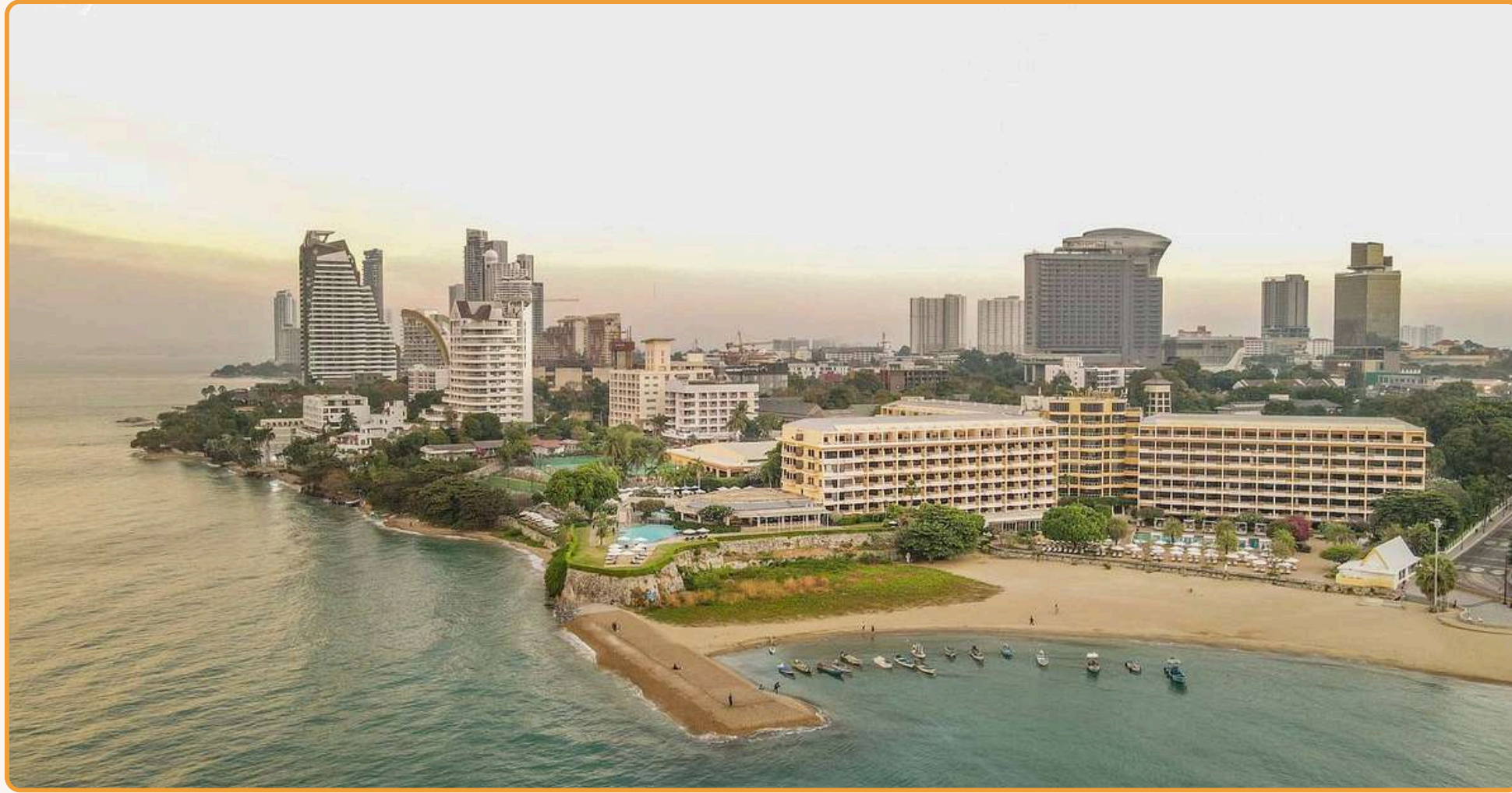
- Molten: Thai and international cuisine

BAR & LOUNGE

- M Lounge: Snacks and drinks
- Pool Bar: Snacks and drinks



Pattaya Accommodations



DUSIT THANI PATTAYA

NUMBER OF ROOMS

- Deluxe Room (40m²)
- Premium Garden View Room (40m²)
- Premium Sea View Room (40m²)
- Club Room (40m²)
- One Bedroom Suite (80m²)
- Club Grand Room (80m²)
- Two Bedroom Suite (120m²)
- Royal Princess Suite (160m²)

LOCATION

Conveniently located near the shopping and dining hotspots of Pattaya City

BALLROOM

- Capacity for up to 2,500 people



Pattaya Accommodations



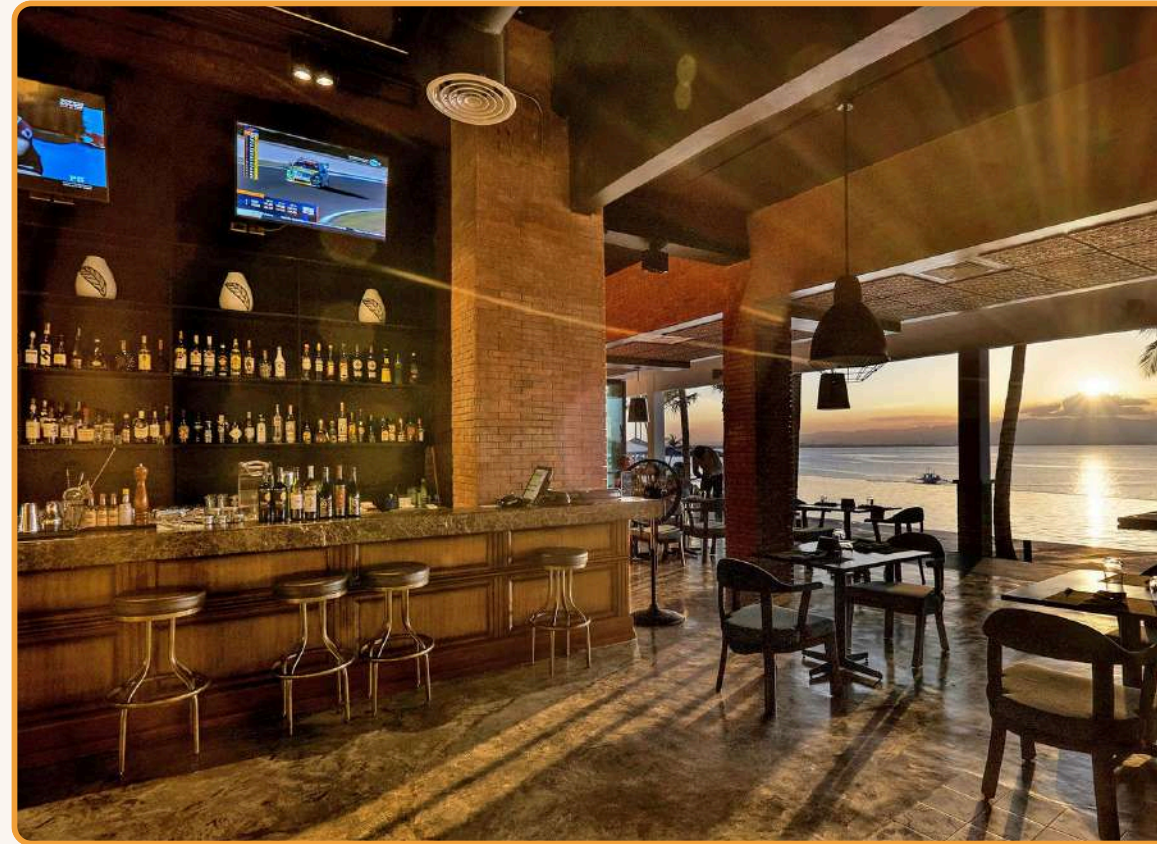
DUSIT THANI PATTAYA RESTAURANTS & BARS

RESTAURANT

- The Cascade Restaurant: Thai cuisine
- The Bay Restaurant: Seafood

BAR & LOUNGE

- Lagoon Pool Bar: Snacks and drinks
- Dusit Gourmet: Cakes and afternoon tea
- The Lobby Lounge: Snacks and drinks



Thank You



Head Office: VINARE Building, Le Duan St., Hoan Kiem, Hanoi, Vietnam

Tel: +84 24 3747 2597 | www.auroratravel.asia | mice@auroratravel.asia