



# THAILAND

## HOTELS



*The Locals Know Best*



# TABLE OF CONTENTS



[auroratravel.asia](http://auroratravel.asia)



**BANGKOK ACCOMMODATIONS**

**CHIANGMAI ACCOMMODATIONS**

**PHUKET ACCOMMODATIONS**

**SAMUI ACCOMMODATIONS**

**PATTAYA ACCOMMODATIONS**



# BANGKOK ACCOMMODATIONS



[auroratravel.asia](http://auroratravel.asia)



**THE BLEND OF ANCIENT TRADITIONS AND MODERNITY**



# Bangkok Accommodations



# MANDARIN ORIENTAL BANGKOK

## NUMBER OF ROOMS

- Deluxe Premier Room (43m2)
- Chao Phraya Room (35m2)
- Deluxe Balcony Room (37m2)
- Mandarin Room (63m2)
- State Room (61m2)
- Junior Terrace Suite (97m2)
- Deluxe One/ Two Bedroom Suite (83 - 125m2)
- Authors' Suite (101m2)
- Deluxe One/ Two Bedroom Theme Suite (83 - 125m2)
- Premier One/ Two Bedroom Theme Suite (108 - 150m2)
- Siam One Bedroom Suite (107m2)
- Selandia Two-Bedroom Suite (169m2)
- Ambassador Two-Bedroom Suite (173m2)
- Royal Suite (306m2)
- Oriental Two-Bedroom Suite (376m2)

## LOCATION

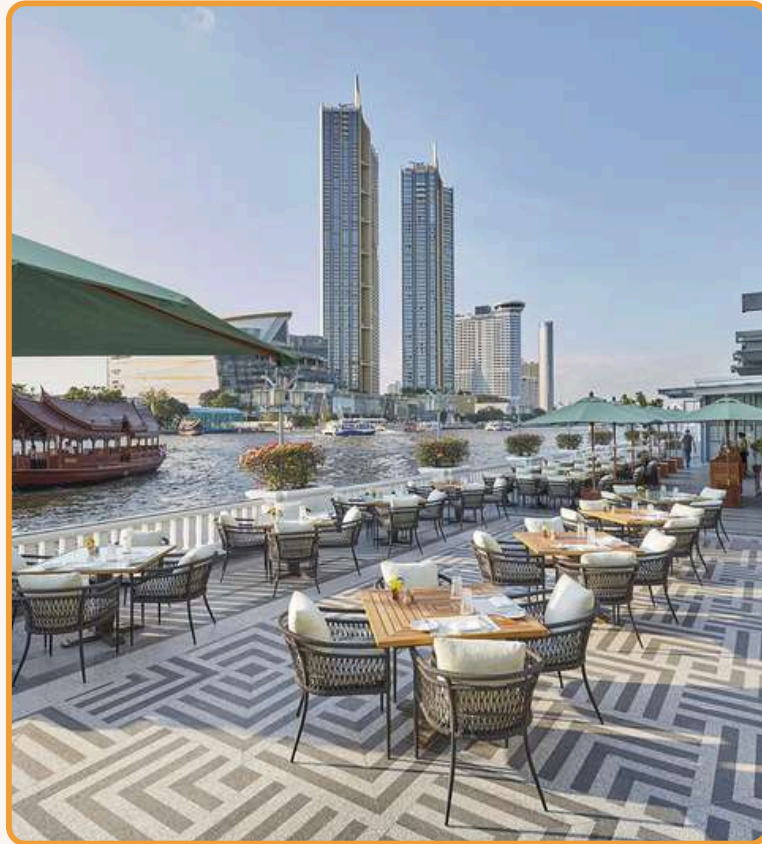
Majestic setting on the Chao Phraya River, 5-minute boat ride to the city's convenient Saphan Taksin Sky Train, and luxurious shopping at IconSiam

## BALLROOM

- Capacity of up to 800 people



# Bangkok Accommodations



## MANDARIN ORIENTAL BANGKOK RESTAURANTS & BARS

### RESTAURANT

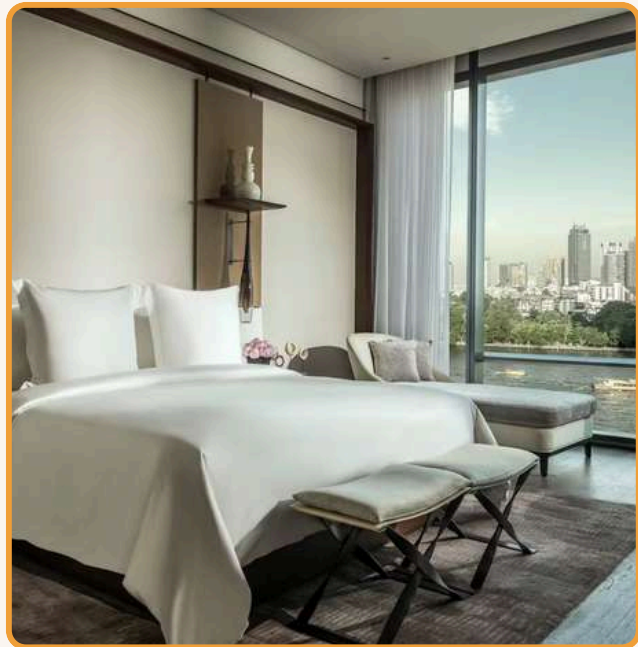
- Lord Jim: Fresh seafood and prime cut meats
- Kinu by Takagi: Traditional Japanese cuisine
- Le Normandie by Alain Roux: Michelin-starred French dining
- The China House: Chinese cuisine

### BAR & LOUNGE

- The Authors' Lounge – Traditional Afternoon Tea in old world charm
- The Bamboo Bar – live jazz and cocktails



# Bangkok Accommodations



# FOUR SEASONS HOTEL BANGKOK

## NUMBER OF ROOMS

- Deluxe Palm Court/ River View Room (50m2)
- Premier River View Room (50m2)
- Premier Balcony Room (64m2)
- State Room (61m2)
- Studio Family Suite (77 - 80m2)
- Studio River View Suite (83 - 125m2)
- Studio River View Terrace Suite (200m2)
- Four Season Balcony Suite (139m2)
- Four Season Executive Suite (110 - 125m2)
- Deluxe River View Two Bed Room (195m2)
- Riverside Terrace Suite (169m2)
- Chao Phraya Terrace Two Bedroom Suite (355m2)
- Riverfront Penthouse (450m2)

## LOCATION

Located within Chao Phraya Estate, an exclusive riverfront development at the heart of Bangkok’s newest shopping, dining, and creative hotspot.

## BALLROOM

- Capacity of up to 900 people



# Bangkok Accommodations



## FOUR SEASONS HOTEL BANGKOK RESTAURANTS & BARS

### RESTAURANT

- Yu Ting Yuan: Chinese cuisine
- Palmier by Guillaume Galliot: International cuisine
- Riva Del Fiume Ristorante: Italian cuisine



### BAR & LOUNGE

- BKK Social Club: Cocktails, craft spirits, cigars
- Lobby Lounge: Afternoon tea
- Cafe Madeleine: Pastry shop and cafe



# Bangkok Accommodations



# CAPELLA BANGKOK

## NUMBER OF ROOMS

- Riverfront (61m2)
- Riverfront Premier (61m2) · Courtyard Suite (101m2)
- Verandah (137m2)
- River Suite (95m2)
- River Premier Suite (110m2)
- Capella Suite (153m2)
- Verandah Suite (209m2)
- 2-Bedroom Family Courtyard Suite (162m2)
- 2-Bedroom Family River Suite (156m2)
- 2-Bedroom Family Capella Suite (214m2) · Villa (259m2)
- Presidential Villa (595m2)

## LOCATION

Located on the Chao Phraya River running through the heart of Bangkok

## BALLROOM

- Capacity of up to 728 people



# Bangkok Accommodations



## CAPELLA BANGKOK RESTAURANTS & BARS

### RESTAURANT

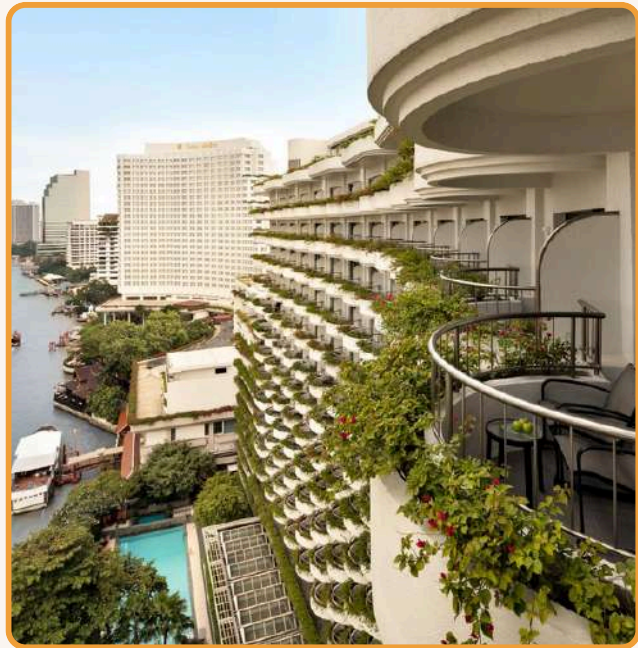
- Phra Nakhon: Thai cuisine
- Côte by Mauro Colagreco: Fine dining

### BAR & LOUNGE

- Stella: Patisserie
- Tea Lounge: Drinks, and afternoon tea



# Bangkok Accommodations



## SHANGRI-LA BANGKOK

### NUMBER OF ROOMS

- Deluxe Room (36m2)
- Deluxe River View Room (36m2)
- Deluxe Balcony Room (42m2)
- Premier Room (56m2)
- Horizon Club Room (36m2)
- Executive Suite (72m2)
- Executive River View Suite (72m2)
- Premier Suite (100m2)
- Specialty Suite (208m2)
- Presidential Suite (235m2) Krungthep Wing
- Krungthep River View Room (44m2)
- Krungthep Deluxe Balcony Room (44 m2)
- Deluxe Suite (84 m2)
- Specialty Suite (129m2)
- Presidential Suite (215m2)

### LOCATION

Located on the banks of the Chao Phraya River, the hotel is close to Bangkok’s shopping business districts.

### BALLROOM

- Capacity of up to 1500 people
- Ceiling height up to 6.5 meters



# Bangkok Accommodations



## SHANGRI-LA BANGKOK RESTAURANTS & BARS

### RESTAURANT

- Volti Restaurant & Bar: Italian cuisine
- NEXT2 Café: International cuisine
- Salathip Restaurant: Thai cuisine
- Horizon Cruise: International cuisine
- Shang Palace Restaurant Cantonese cuisine

### BAR & LOUNGE

- The Long Bar: Signature cocktails and light dining
- The Chocolate: Chocolate and coffee drinks, cake and pastries
- Lobby Lounge: Light dining and afternoon tea
- Riverside Lounge: Light dining and afternoon tea



# Bangkok Accommodations



## THE LANDMARK BANGKOK

### NUMBER OF ROOMS

#### 399 rooms & suites including

- Premium Room (30m2)
- Premium Corner Room (40m2)
- Premium Club Room (30m2)
- Premium Club Corner Room (40m2)
- Deluxe Suite (50m2)
- Executive Suite (80m2)

### LOCATION

Located on lower Sukhumvit Road next to Nana Station of Bangkok’s Skytrain system.

### BALLROOM

- Capacity up to 700 people



# Bangkok Accommodations



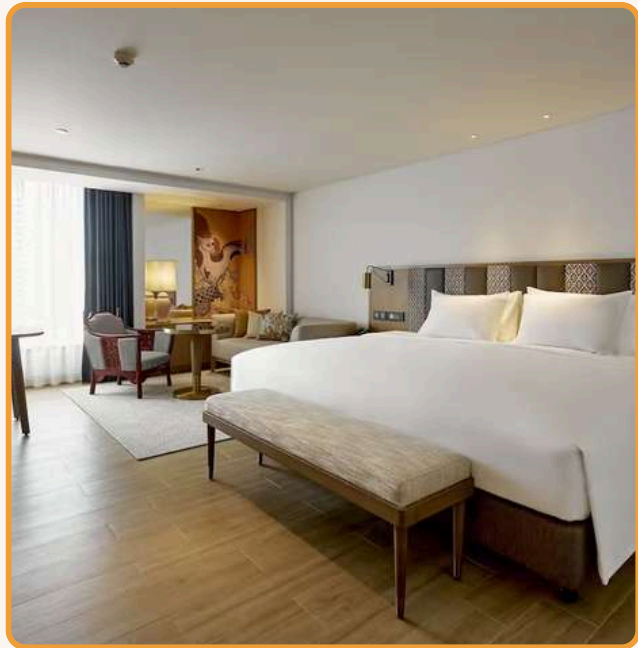
## THE LANDMARK BANGKOK RESTAURANTS & BARS

### RESTAURANT & BAR

- RR&B Steakhouse: Western cuisine
- Atrium: International cuisine
- Sui Sian Chinese Restaurant: Cantonese cuisine
- Rendezvous: Signature coffee and tea



# Bangkok Accommodations



## MONTIEN HOTEL SURAWONG BANGKOK

### NUMBER OF ROOMS

#### 470 rooms including

- Deluxe Rooms (30m2)
- Premier Rooms (32m2)
- Premier Corner (40m2)
- Premier Deluxe (42m2)
- Junior Suite (56m2)
- One-bedroom Balcony Suite (60m2)
- One-bedroom Corner Suite (70m2)

### LOCATION

Located in the heart of the city's most captivating neighbourhood

### BALLROOM

- Capacity up to 800 people



# Bangkok Accommodations



## MONTIEN HOTEL SURAWONG BANGKOK RESTAURANTS & BARS

### RESTAURANT & BAR

- Ruenton: Thai and Chinese cuisine
- Phar-Ram IV Bistro: Light dinning and drinks



# Bangkok Accommodations



## SOFITEL SUKHUMVIT BANGKOK

### NUMBER OF ROOMS

345 rooms including

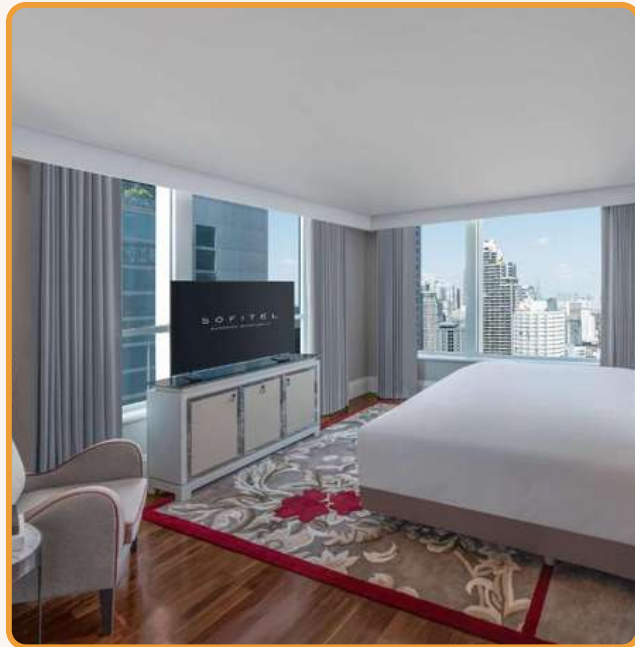
- Luxury Rooms (37m2)
- Magnifique (42m2)
- Family Room (42m2)
- Luxury Room, Club Millésime Access (42m2)

### LOCATION

Located in the heart of Bangkok near famous shopping malls and attractions

### BALLROOM

- Capacity up to 800 people
- Ceiling height up to 4,7 meters



# Bangkok Accommodations



## SOFITEL SUKHUMVIT BANGKOK RESTAURANTS & BARS

### RESTAURANT

- Voila!: International cuisine

### BAR & LOUNGE

- Le Bar De L'Hotel: Wines and Cocktails
- Le Macaron: Patisserie
- Liquide Pool Bar: Fresh Juices and cocktails
- Wine Boutique: Wine



# CHIANG MAI ACCOMMODATIONS



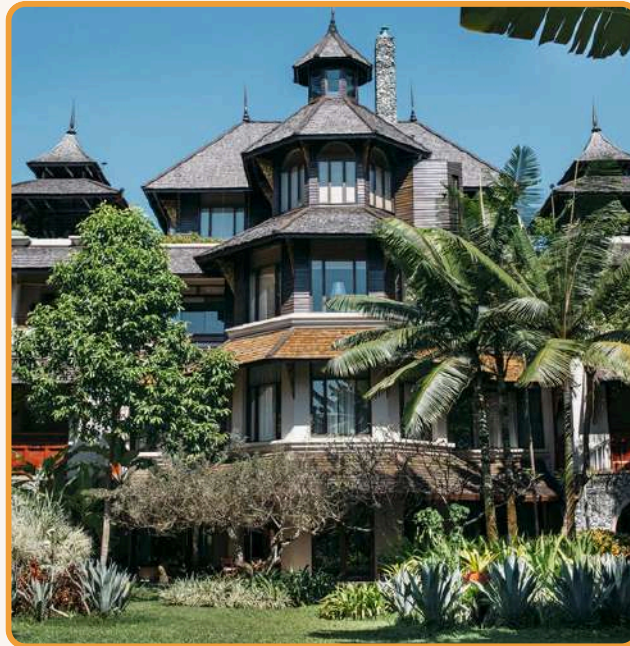
auroratravel.asia



**THE MIX OF CULTURAL HERITAGE AND PICTURESQUE SCENERY**



# Chang Mai Accommodations



## FOUR SEASONS RESORT CHIANG MAI

### NUMBER OF ROOMS

- Upper/ Classic Rice Terrace Pavilion (70m2)
- Upper/ Classic Garden Pavilion (70m2)
- Pool Villa (403m2)
- One Bedroom Family/ Spa Residence (244m2)
- One/ Two Bedroom Residence with Plunge Pool (284/ 390m2)
- Two/ Three Bedroom Residence (350/ 524m2)
- Two/ Three/ Four Bedroom Grand Residence Pool Villa (487/ 803/ 855m2)

### LOCATION

Located 30 minutes from downtown Chiang Mai

### BALLROOM

- Capacity for up to 300 people



# Chang Mai Accommodations



## FOUR SEASONS RESORT CHIANG MAI RESTAURANTS & BARS

### RESTAURANT

- North by Four Seasons: Grill dishes
- Khao by Four Season: Thai cuisine
- Rim Tai Kitchen: Cooking class and Thai dining

### BAR & LOUNGE

- Ratree Bar & Lounge: Snacks and cocktails



# Chang Mai Accommodations



## SHANGRI-LA CHIANG MAI

### NUMBER OF ROOMS

- Deluxe Room (43m2)
- Premier Room (58m2)
- Executive Suite (86m2)
- Horizon Club Deluxe (43m2)
- Horizon Club Premier (58m2)
- Horizon Club Executive Suite (86m2)
- Aranda Suite (129m2)
- Lotus Suite (213m2)
- Presidential (215m2)

### LOCATION

Located on Chang Klan Road within walking distance of the city's Night Bazar, and 10 minutes drive from Chiang Mai International airport

### BALLROOM

- Capacity for up to 1800 people
- Ceiling height up to 8.8 meters



# Chang Mai Accommodations



## SHANGRI-LA CHIANG MAI RESTAURANTS & BARS

### RESTAURANT

- Kad Kafe: International cuisine
- Silapa Thai: Thai cuisine

### BAR & LOUNGE

- Lobby Lounge: Light dining, drinks, and afternoon tea
- WoW Pool Bar: Snacks and drinks



# Chang Mai Accommodations



## ANANTARA CHIANG MAI

### NUMBER OF ROOMS

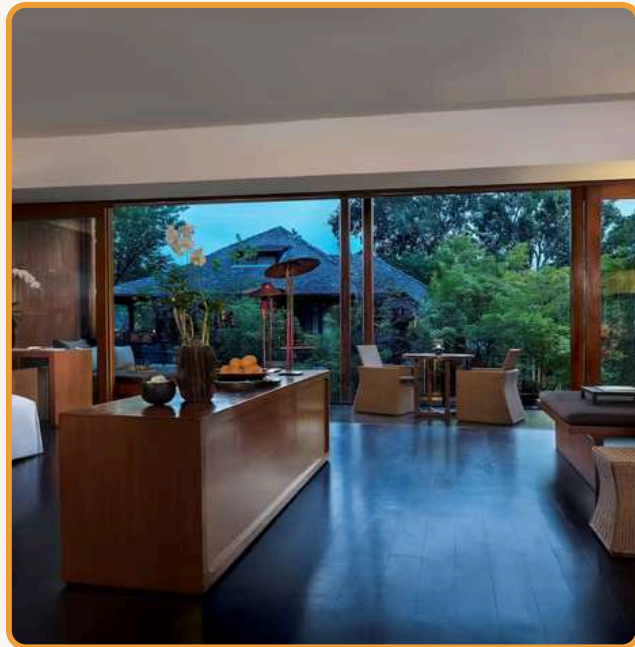
- 40 Deluxe Garden View Room (50m2)
- 12 Deluxe River View Room (50m2)
- 20 Kasara Garden View Suites (105m2)
- 12 Kasara River View Suites (105m2)

### LOCATION

Located on the banks of the Mae Ping River, near the city's attraction

### BALLROOM

- Capacity for up to 80 people
- Ceiling height up to 3 meters



# Chang Mai Accommodations



## ANANTARA CHIANG MAI RESTAURANTS & BARS

### RESTAURANT

- The Service 1921: Western and Grill
- Bodhi Terrace: Thai cuisine

### BAR & LOUNGE

- Brit Bar: Wine, whiskie, cocktail and cigar
- Bubbles Rooftop Bar: Snacks and cocktail
- Afternoon Tea: Afternoon tea with cakes



# Chang Mai Accommodations



## RATILANNA RIVERSIDE SPA RESORT CHIANG MAI

### NUMBER OF ROOMS

- 26 Deluxe Room (40m2)
- 6 Deluxe Terrace Room (48m2)
- 56 Deluxe Balcony (60m2)
- 17 Executive Suite (120m2)
- 1 Riverside Garden Suite (232m2)
- 1 Riverside Pool Suite (205m2)

### LOCATION

Located on Chang Klan Road within walking distance of the city's Night Bazar, and 10 minutes drive from Chiang Mai International airport

### BALLROOM

- Capacity for up to 150 people



# Chang Mai Accommodations



## RATILANNA RIVERSIDE SPA RESORT CHIANG MAI RESTAURANTS & BARS

### RESTAURANT

- Mira Restaurant: Northern Thai cuisine
- Rio Restaurant & Wine Bar: BBQ & wine
- Malin Pavillion: Cocktail and wine



# PHUKET ACCOMMODATIONS



[auroratravel.asia](http://auroratravel.asia)



**THE FUSE OF COASTAL BEAUTY AND BUSTLING NIGHTLIFE**



*The Locals Know Best*



# Phuket Accommodations



## INTERCONTINENTAL PHUKET

### NUMBER OF ROOMS

- Classic/ Pool View/ Mountain View Rooms (43m2)
- Classic Pool/ Premium Pool Access Rooms (43/ 46m2)
- Premium Ocean View Club Lounge Access Rooms (46m2)
- Lagoon Villa Club Lounge Access (104m2)
- Beachside Suite Ocean View Club Lounge Access (60m2)
- One/ Two/ Three Bedroom Pool Villa Club Lounge Access (210/ 260/ 360m2)

### LOCATION

Nestled amidst the forested hills of Kamala Bay with panoramic views of the Andaman Sea

### BALLROOM

- Capacity for up to 220 people
- Ceiling height up to 4.2 meters



# Phuket Accommodations



## INTERCONTINENTAL PHUKET RESTAURANTS & BARS

### RESTAURANT & BAR

- Jaras Restaurant: International cuisine
- Pine Beach Bar: Brunch
- Malin Pavillion: Cocktail and wine



# Phuket Accommodations



## ANGSANA LAGUNA PHUKET

### NUMBER OF ROOMS

- 199 Laguna Room
- 45 Laguna Grand Room
- 16 Laguna Poolside Room
- 47 Laguna Premier Room
- 35 Angsana One Bedroom Loft
- 22 Two Bedroom Island Duplex
- 21 Two bedroom Island Suite
- 1 Grand Angsana Suite
- 6 Two Bedroom Pool Suite Lagoon View
- 3 Two Bedroom Pool Suite Beach View
- 3 Three Bedroom Pool Suite Beachfront

### LOCATION

Located on Bang Tao Bay and the blue waters of the Andaman Sea.

### BALLROOM

- Capacity for up to 1500 people



# Phuket Accommodations



## ANGSANA LAGUNA PHUKET RESTAURANTS & BARS

### RESTAURANT

- Azura Restaurant: Italian cuisine
- XANA: Fusion cuisine and drinks
- Market Place: Thai cuisine
- Bodega & Grill: Fusion cuisine



### BAR & LOUNGE

- Poolside: Snacks and drinks
- Loy Krathong Bar: Snacks and drink



# Phuket Accommodations



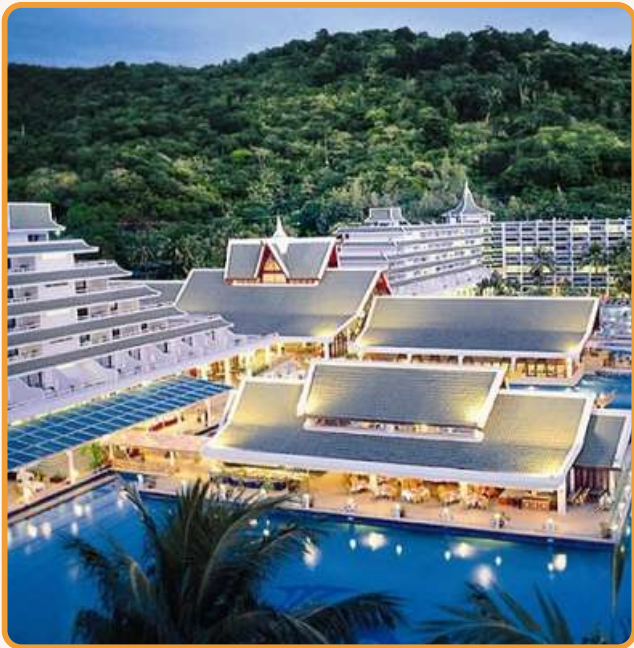
## LE MERIDIEN PHUKET BEACH

### NUMBER OF ROOMS

- Deluxe Garden/ Pool View Rooms (37m2)
- Deluxe Ocean View Rooms (38m2)
- Junior Suites (47m2)

### LOCATION

The Resort is located on a lush cove on a secluded, It is more privacy free from usual tourist distractions

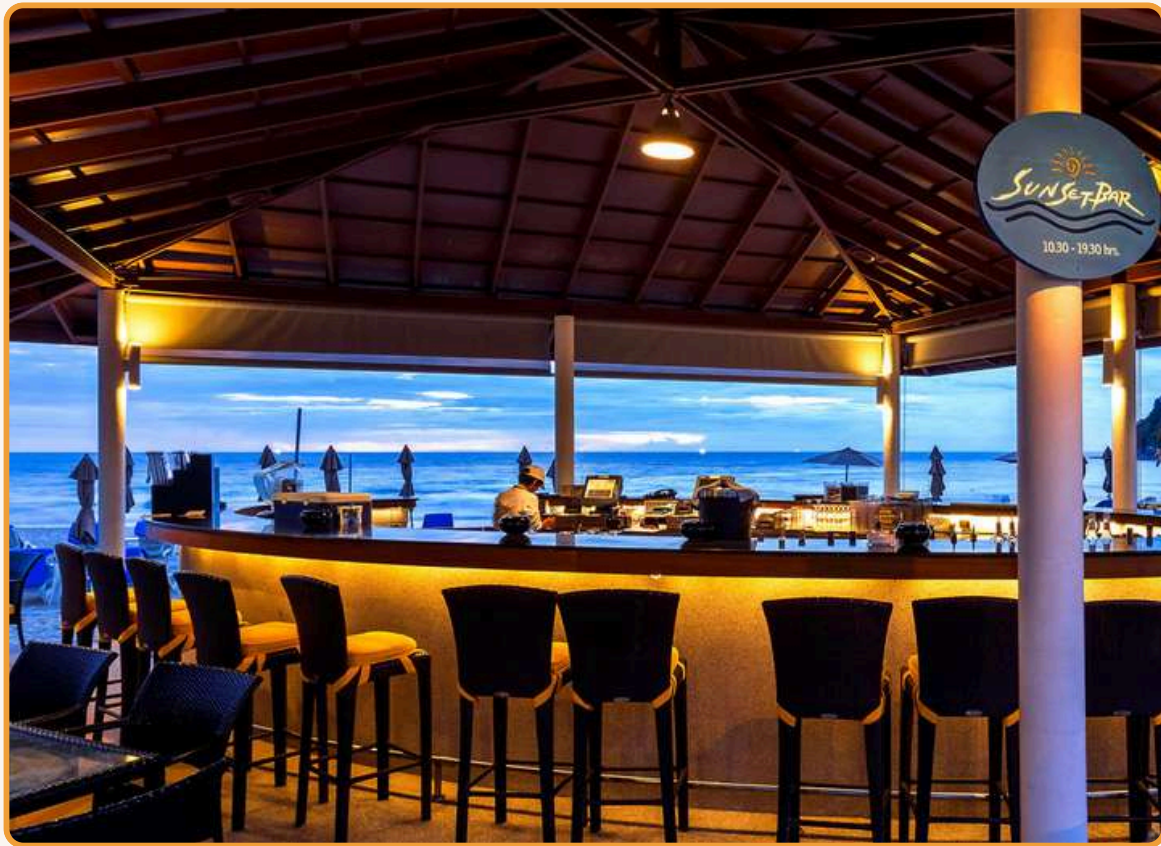


### BALLROOM

- Capacity for up to 1500 people



# Phuket Accommodations



## LE MERIDIEN PHUKET BEACH RESTAURANTS & BARS

### RESTAURANT

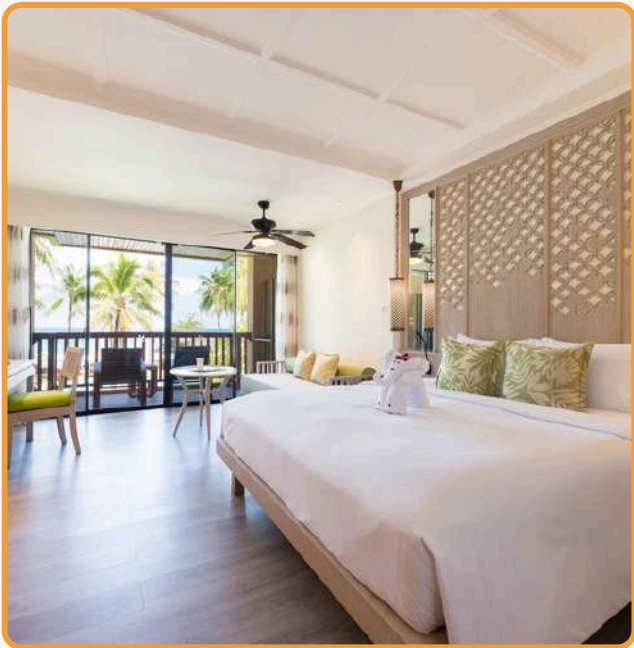
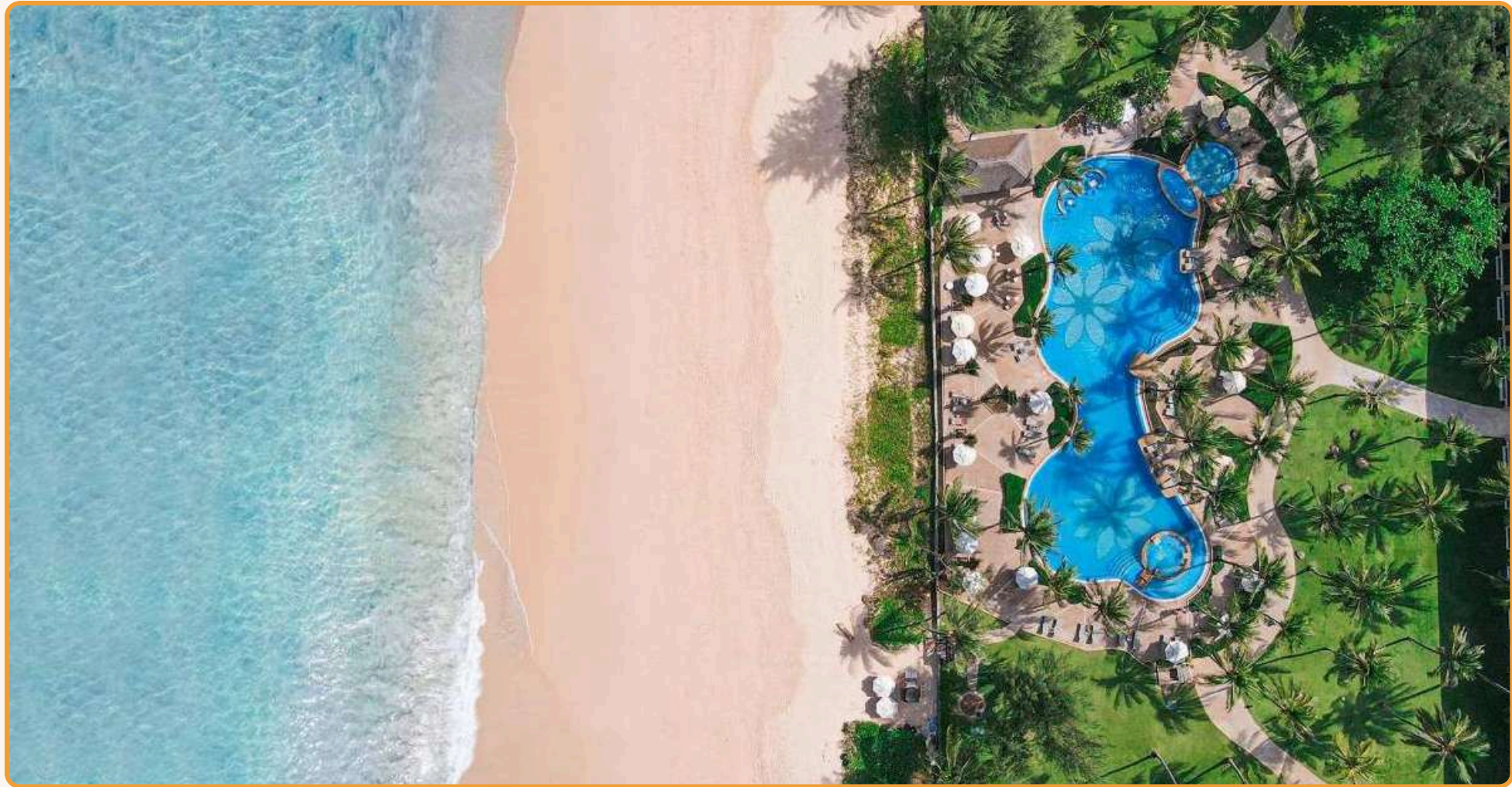
- Ariake Japanese: Japanese cuisine
- Beach BBQ: Seafood and Grill
- La Fiamma: Pizza menu
- Latest Recipe: International cuisine
- Pakarang Restaurant: International cuisine
- Portofino: Italian cuisine
- Wang Warin: Thai cuisine

### BAR & LOUNGE

- Poolside: Snacks and drinks
- Loy Krathong Bar: Snacks and drink



# Phuket Accommodations



## KATATHANI PHUKET BEACH

### NUMBER OF ROOMS

- Deluxe Room (40m2)
- Deluxe Pool (40m2)
- Grand Deluxe (50m2)
- Junior Suite – Thani Wing (45m2)
- Junior Suite Oceanfront – Thani Wing (50m2)

### LOCATION

The Resort is located on a lush cove on a secluded, It is more privacy free from usual tourist distractions

### BALLROOM

- Capacity for up to 980 people
- Ceiling height up to 16.4 meters



# Phuket Accommodations



## KATATHANI PHUKET BEACH RESTAURANTS & BARS

### RESTAURANT

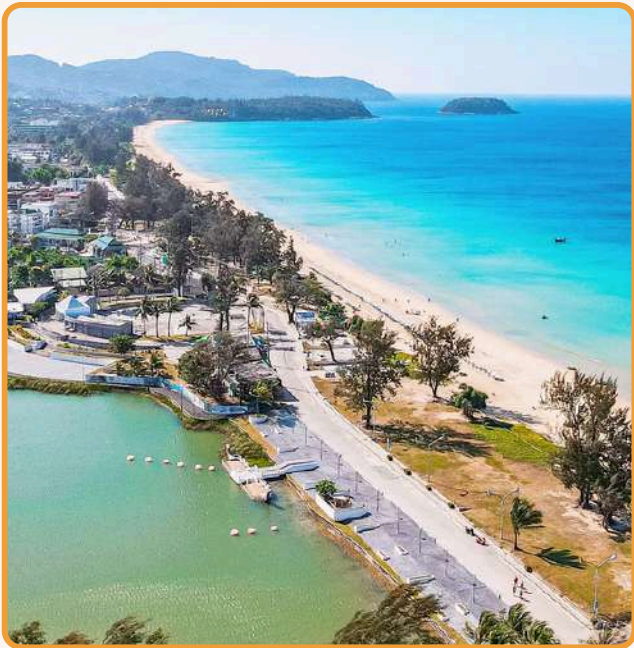
- Chom Talay: Thai and Western cuisine
- Fisherman's Wharf: Seafood
- La Scala: Western cuisine
- Chanadda: Thai cuisine
- Seaside: Italian cuisine
- Seacret: Phuket-styled cuisine
- Wang Warin: Thai cuisine

### BAR & LOUNGE

- Coconut Bar: Snacks and drinks
- Mango Bar: Snacks and drinks
- Pineapple Bar: Snacks and drinks
- Palm Bar: Snacks and drinks
- Beach Club Bar: Snack and drinks
- Lobby Lounge: Drinks: Snacks and drinks



# Phuket Accommodations



## HOLIDAY INN RESORT PHUKET KARON BEACH

### NUMBER OF ROOMS

- 1 Bedroom Villa Plunge Pool (60m2)
- 1 Bedroom Villa (52m2)
- 1 Bedroom Suite (52m2)
- 1 King 1 Bunk Family Suite (38m2)
- 1 King 1 Bunk Premium (33m2)
- 1 King Premium (33m2)
- 1 King Standard Plunge Pool Central Building (28m2)
- 2 Twin Standard Bathtub Central Building (28m2)
- 1 King Standard Central Building (28m2)
- 2 Twin Standard Central Building (28m2)
- 1 King Standard (28m2)
- 2 Twin Standard (28m2)

### LOCATION

60-minute drive from Phuket International Airport

### BALLROOM

- Capacity for up to 36 people



# Phuket Accommodations



## HOLIDAY INN RESORT PHUKET KARON BEACH RESTAURANTS & BARS

### RESTAURANT

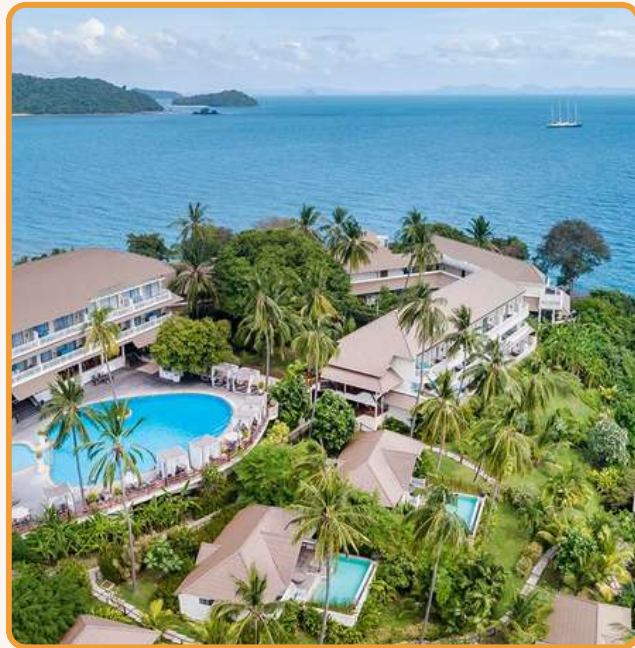
- Horizon Restaurant: International cuisine
- Chef's Table: Thai cuisine

### BAR & LOUNGE

- Joe Kool's Pool Bar: Snacks and drinks
- Pool Bar: Snacks and drinks
- Champions Bar: Snacks and drinks



# Phuket Accommodations



## CAPE PANWA HOTEL PHUKET

### NUMBER OF ROOMS

- 55 Junior Suite (53m2)
- 126 Cape Suite (78m2)
- 2 Cape Signature Corner Suite (127m2)
- 12 Family Suite (114m2)
- 6 Pool Villa (138m2)
- 1 Panwa Lodge (154m2)
- 1 The Cape Absolute Suite (530m2)

### LOCATION

Located on the quiet southern tip of the east coast of Phuket Island.

### BALLROOM

- Capacity for up to 200 people



# KO SAMUI ACCOMMODATIONS



[auroratravel.asia](http://auroratravel.asia)



**AN UNFORGETTABLE TROPICAL ESCAPE FOR ALL**



*The Locals Know Best*



# Ko Samui Accommodations



# ANANTARA BOPHUT KOH SAMUI RESORT

## NUMBER OF ROOMS

- 26 Premier Garden View (32m2)
- 26 Deluxe Garden View (36m2)
- 8 Deluxe Sea View (36m2)
- 22 Junior Garden Suite (44m2)
- 8 Garden View Suite (64m2)
- 6 Garden Pool Suite (64m2)
- 4 Sea View Suite (64m2)
- 4 Luxury Beach Front View Suite (80m2)
- 2 Luxury Beach Front Pool Suite (80m2)
- 1 Two Bedroom Pool Suite (114m2)

## LOCATION

Located near Fisherman's Village, and the island airport is a 15-minute drive

## BALLROOM

- Capacity for up to 200 people
- Ceiling height up to 12 meters



# Ko Samui Accommodations



## ANANTARA BOPHUT KOH SAMUI RESORT RESTAURANTS & BARS

### RESTAURANT

- Guilty Samui: Peruvian cuisine
- Thin Tai: Southern Thai cuisine
- Spice Spoons: Thai cooking class and cuisine

### BAR & LOUNGE

- TĀN Beach Lounge: Light dining and drink



# Ko Samui Accommodations



## MELATI BEACH RESORT & SPA

### NUMBER OF ROOMS

- 26 Premier Garden View (32m2)
- 26 Deluxe Garden View (36m2)
- 8 Deluxe Sea View (36m2)
- 22 Junior Garden Suite (44m2)
- 8 Garden View Suite (64m2)
- 6 Garden Pool Suite (64m2)
- 4 Sea View Suite (64m2)
- 4 Luxury Beach Front View Suite (80m2)
- 2 Luxury Beach Front Pool Suite (80m2)
- 1 Two Bedroom Pool Suite (114m2)

### LOCATION

Conveniently located just 15 minutes away from the vibrant nightlife of Chaweng Beach and a short drive from Samui Airport

### BALLROOM

- Capacity for up to 80 people
- Ceiling height up to 12 meters



# Ko Samui Accommodations



## MELATI BEACH RESORT & SPA RESTAURANTS & BARS

### RESTAURANT

- The View Restaurant: International, Thai cuisine and seafood
- Kan Sak Thong Restaurant: Fusion cuisine
- Private In Villa BBQ: Grill with a personal chef

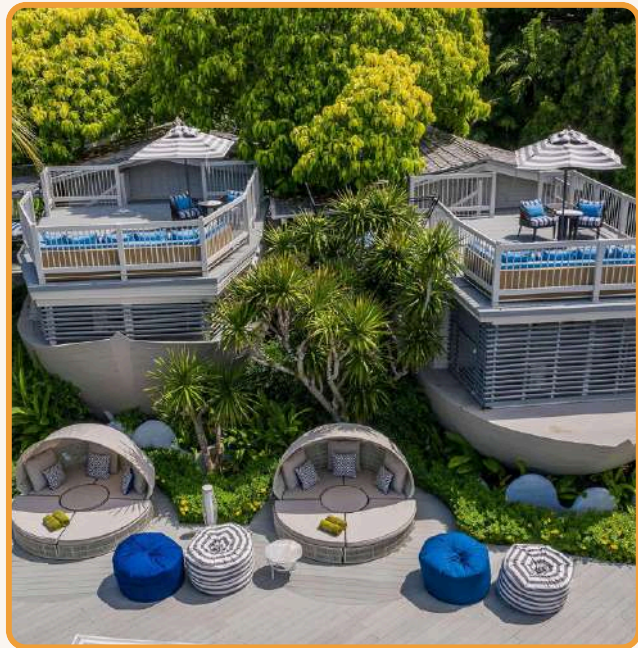
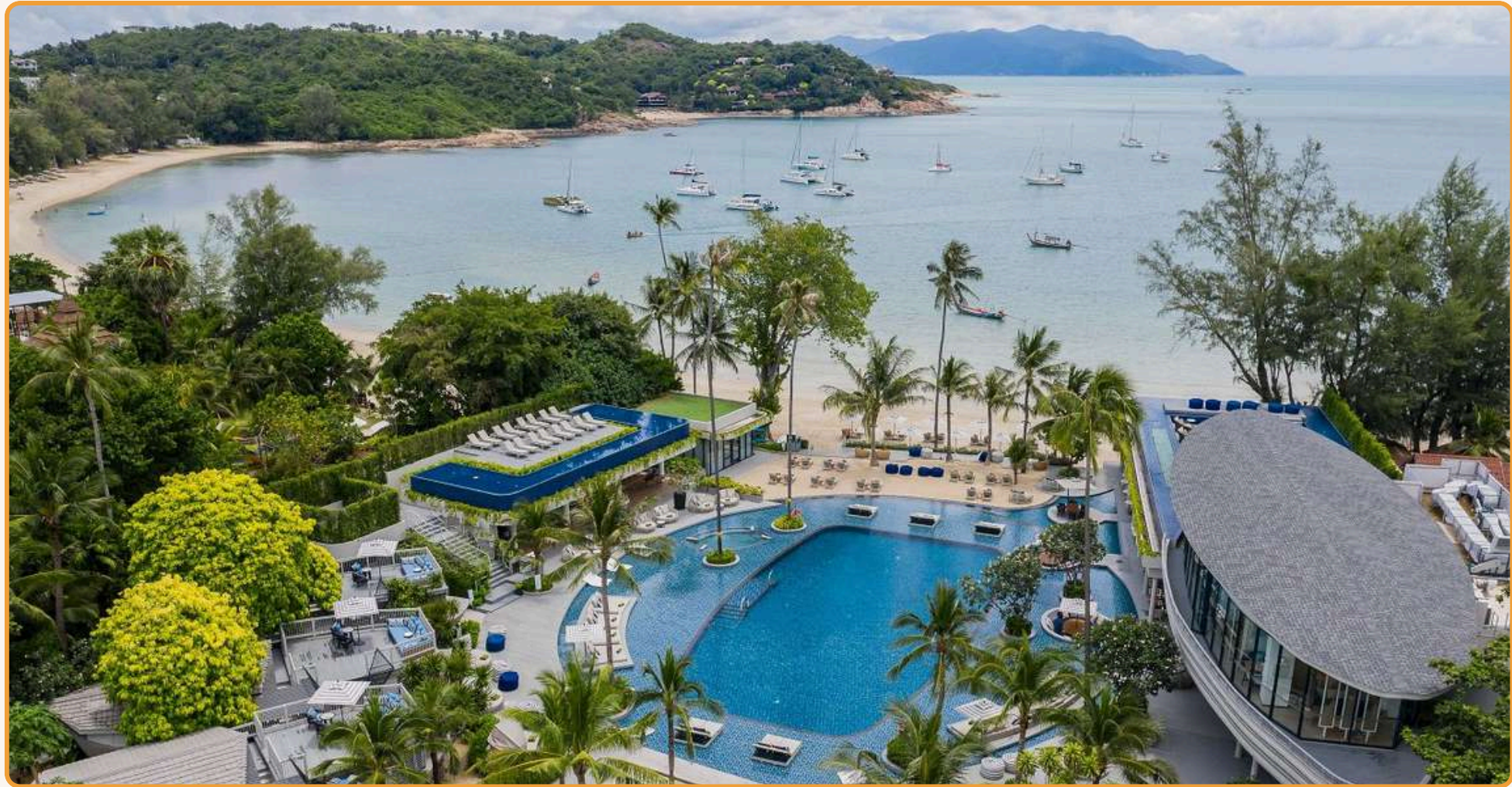


### BAR & LOUNGE

- Sea View Bar: Snacks and drinks



# Ko Samui Accommodations



## MELIA KOH SAMUI

### NUMBER OF ROOMS

- Deluxe One/ Two Bedroom (51m2)
- Premium One/ Two Bedroom (52m2)
- Premium Pool Access Room (58m2)
- Premium Pool Side Room (58m2)
- Grand Suite (104m2)
- Duplex Boat Suite (91m2)

### LOCATION

Just 5km from the airport, Meliá Koh Samui features highly original and surrounded by wild and lush vegetation

### BALLROOM

- Capacity for up to 200 people
- Ceiling height up to 2.75 meters



# Ko Samui Accommodations



## MELIA KOH SAMUI RESTAURANTS & BARS

### RESTAURANT

- Koko Kitchen: Thai cuisine
- The Breeza Beach Restaurant & Bar: Thai and Spanish cuisine

### BAR & LOUNGE

- Boat's Bar: Coffe and Tea
- Pool Bar: Fresh juices, smoothies and cocktails



# Ko Samui Accommodations



# FOUR SEASONS RESORT SAMUI

## NUMBER OF ROOMS

- Beach Villa with Pool (125m2)
- Ocean Pool Villa (102m2)
- Family Pool Villa (118m2)
- Panoramic Ocean View Pool Villa (103m2)
- Premier Ocean View Pool Villa (103m2)
- Island Ocean Pool Villa (103m2)
- Serenity Pool Villa (103m2)
- Two/ Three/ Four/ Five Bedroom Residence Villa with Pool (757/ 1130/ 1210/ 1503m2)
- Three Bedroom Family Residence Villa with Pool (1130m2)
- Island Residence with Pool (660m2)

## LOCATION

Located near main attractions, including historic temples, are a half-hour drive, and Santiburi Samui Country Club is just a 15-minute drive.

## BALLROOM

- Capacity for up to 200 people



# Ko Samui Accommodations



## FOUR SEASONS RESORT SAMUI RESTAURANTS & BARS

### RESTAURANT

- Koh Thai Kitchen: Southern Thai cuisine
- Pla Pla: Seafood
- In-Villa Dining: Privat Grill

### BAR & LOUNGE

- Koh Bar: Wines and cocktails
- Cocorum: Cocktails and spirits
- Rum Vault: Rum



# PATTAYA ACCOMMODATIONS



auroratravel.asia



**THE DIVERSE RANGE OF ATTRACTIONS AND ACTIVITIES**



# Pattaya Accommodations



## CENTARA GRAND MIRAGE BEACH RESORT PATTAYA

### NUMBER OF ROOMS

- 145 Deluxe Ocean Facing (38m2)
- 128 Deluxe Family (38m2)
- 136 Premium Deluxe (38m2)
- 69 Deluxe Spa (38m2)
- 76 Club Mirage (38m2)
- 18 Club Mirage Suite (84 - 150m2)
- 31 Club Mirage Family Residence Suite (52m2)
- 1 Club Grand Mirage Suite (130m2)
- 5 Club Grand Mirage Duplex Suite (130m2)
- 1 Club Mirage The Royal Suite (197m2)

### LOCATION

Set in a multifaceted city with an array of good restaurants and shopping malls

### BALLROOM

- Capacity for up to 988 people
- Ceiling height up to 6 meters



# Pattaya Accommodations



## CENTARA GRAND MIRAGE BEACH RESORT PATTAYA RESTAURANTS & BARS

### RESTAURANT

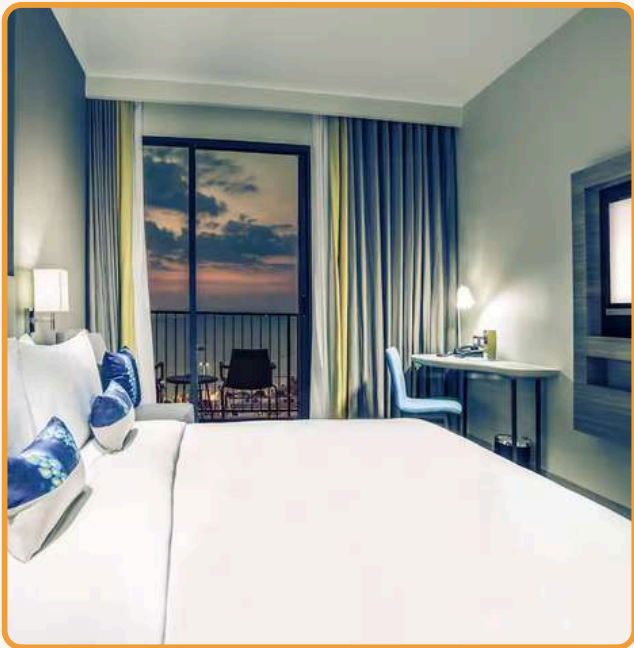
- Oasis: International cuisine
- Acqua: Italian cuisine
- Waves: Coastal and noodle dishes
- In-room dining: International cuisine

### BAR & LOUNGE

- COAST Beach Club & Bistro: Coastal and cocktails
- Vistas: Snacks and drinks



# Pattaya Accommodations



## MERCURE PATTAYA OCEAN

### NUMBER OF ROOMS

- Superior King (26m2)
- Superior Twin (26m2)
- Superior Ocean View King (26m2)
- Deluxe Ocean View King (26m2)
- Deluxe Ocean View Twin (26m2)
- Executive Family Suite (66m2)
- Ocean View Suite (40m2)

### LOCATION

The hotel is located in Northern Pattaya, 2-minute walk from the beach and close to Terminal 21 Pattaya, Central Marina, BigC Supercenter, and Walking Street.

### BALLROOM

- Capacity for up to 60 people
- Ceiling height up to 6 meters



# Pattaya Accommodations



## MERCURE PATTAYA OCEAN RESTAURANTS & BARS

### RESTAURANT

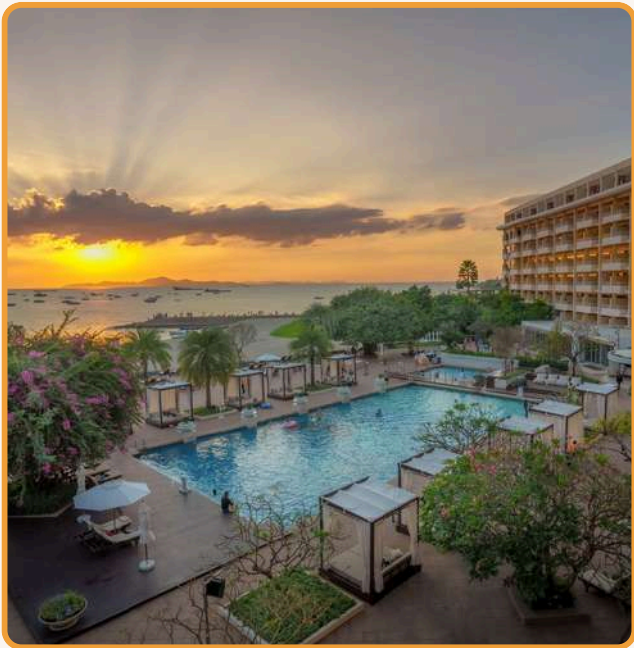
- Molten: Thai and international cuisine

### BAR & LOUNGE

- M Lounge: Snacks and drinks
- Pool Bar: Snacks and drinks



# Pattaya Accommodations



# DUSIT THANI PATTAYA

## NUMBER OF ROOMS

- Deluxe Room (40m2)
- Premium Garden View Room (40m2)
- Premium Sea View Room (40m2)
- Club Room (40m2)
- One Bedroom Suite (80m2)
- Club Grand Room (80m2)
- Two Bedroom Suite (120m2)
- Royal Princess Suite (160m2)

## LOCATION

Conveniently located near the shopping and dining hotspots of Pattaya City

## BALLROOM

- Capacity for up to 2,500 people



# Pattaya Accommodations



## DUSIT THANI PATTAYA RESTAURANTS & BARS

### RESTAURANT

- The Cascade Restaurant: Thai cuisine
- The Bay Restaurant: Seafood

### BAR & LOUNGE

- Lagoon Pool Bar: Snacks and drinks
- Dusit Gourmet: Cakes and afternoon tea
- The Lobby Lounge: Snacks and drinks





# Thank You



**Head Office:** VINARE Building, Le Duan St., Hoan Kiem, Hanoi, Vietnam

Tel: +84 24 3747 2597 | [www.auroratravel.asia](http://www.auroratravel.asia) | [mice@auroratravel.asia](mailto:mice@auroratravel.asia)