



# LAOS

## HOTELS





# TABLE OF CONTENTS



[auroratravel.asia](http://auroratravel.asia)



## LUANG PRABANG ACCOMMODATIONS





# LUANG PRABANG ACCOMMODATIONS



auroratravel.asia



**UNESCO WORLD HERITAGE-LISTED BOASTS A RICH TAPESTRY OF CULTURAL LEGACIES**

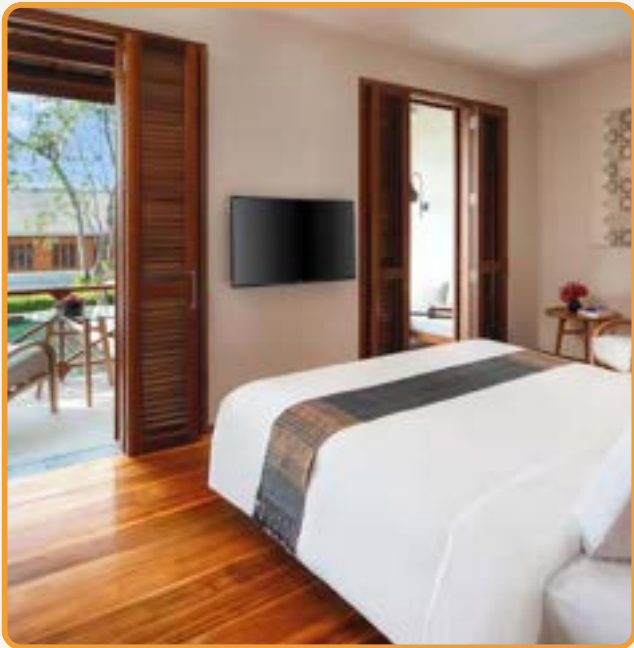


*The Locals Know Best*





# Luang Prabang Accommodations



## AVANI+ LUANG PRABANG

### NUMBER OF ROOMS

- 26 AVANI Deluxe Room (35m2)
- 23 AVANI Deluxe Pool View Room (35m2) · 4 AVANI Suite (58 – 85m2)

### LOCATION

Join the locals in alms giving at dawn as saffron-robed monks file silently by. Explore the dozens of temples that surround the resort between the bends of the Mekong and Khan River

### BALLROOM

- Capacity of up to 25 people
- Ceiling height up to 3 meters





# Luang Prabang Accommodations



## AVANI+ LUANG PRABANG RESTAURANTS & BARS

### RESTAURANT & BAR

- Main Street Bar & Grill: Grill dishes & drinks
- Main Street Bar: Cocktail infused with traditional Lao spirits
- Poolside Bar: Snacks, tropical smoothie, and wine





# Luang Prabang Accommodations



## PULLMAN LUANG PRABANG

### NUMBER OF ROOMS

123 rooms, suites including:

- Deluxe Room (42m2)
- Premium Deluxe Room (67m2)
- Deluxe Suite (83m2)
- Premium Deluxe Suite (105m2)
- Two-Bedroom Pool Villa (270m2)

### LOCATION

15 minutes away from the Luang Prabang International Airport and 10 minutes from the city center. The famous Kuang Si Waterfalls and Tad Sae Waterfalls are only 30 minutes away and other local attractions.

### BALLROOM

- Capacity of up to 180 people
- Ceiling height up to 7.8 meters





# Luang Prabang Accommodations



## PULLMAN LUANG PRABANG RESTAURANTS & BARS

### RESTAURANT & BAR

- L'Atelier Restaurant: Buffets feature local and international delicacies
- The Junction: Local and international snack & drinks
- H2O Pool Bar: Healthy salads (from the hotel gardens), sandwiches and local specialties and creative cocktails.





# Luang Prabang Accommodations



## LA RESIDENCE PHOU VAO, A BELMOND HOTEL

### NUMBER OF ROOMS

- Junior Suites (55m2)
- Phou Vao Garden Suites (65m2)

### LOCATION

12-minute drive from Luang Prabang International Airport (LPQ) and only 15-minute drive from central Luang Prabang

### BALLROOM

- Capacity of up to 70 people





# Luang Prabang Accommodations



## LA RESIDENCE PHOU VAO, A BELMOND HOTEL RESTAURANTS & BARS

### RESTAURANT & BAR

- Tam Nan: Local cuisine and vegetarian
- Starlit Romance: Signature Champagnes





# Luang Prabang Accommodations



## SOFITEL LUANG PRABANG

### NUMBER OF ROOMS

- Garden Suite (56m2)
- Heritage Suites (70 m2)
- Signature Governor's Residence (120m2)

### LOCATION

Sofitel Luang Prabang is only a 15-minute drive from Luang Prabang International Airport in the peaceful Ban Mano quarter of the city.



### BALLROOM

- Capacity of up to 80 people
- Ceiling height up to 3 meters





# Luang Prabang Accommodations



## SOFITEL LUANG PRABANG RESTAURANTS & BARS

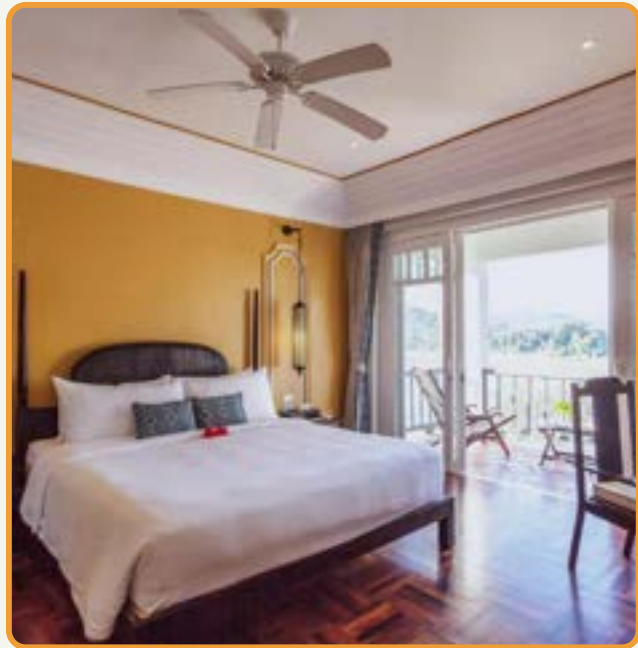
### RESTAURANT & BAR

- Governor's Grill: Western or Lao fusion cuisine
- Home The Library: Vintage wine with snack





# Luang Prabang Accommodations



## THE GRAND LUANG PRABANG

### NUMBER OF ROOMS

- Deluxe Room
- Mekong Deluxe Room
- Executive Suite
- Mekong Executive Suite

### LOCATION

Sofitel Luang Prabang is only a 15-minute drive from Luang Prabang International Airport in the peaceful Ban Mano quarter of the city.

### BALLROOM

- Capacity of up to 200 people





# Luang Prabang Accommodations



## THE GRAND LUANG PRABANG RESTAURANTS & BARS

### RESTAURANT & BAR

- Governor’s Grill: Western or Lao fusion cuisine
- Home The Library: Vintage wine with snack







# Thank You



**Head Office:** VINARE Building, Le Duan St., Hoan Kiem, Hanoi, Vietnam

Tel: +84 24 3747 2597 | [www.auroratravel.asia](http://www.auroratravel.asia) | [mice@auroratravel.asia](mailto:mice@auroratravel.asia)