



NORTHERN VIETNAM HOTELS

TABLE OF CONTENTS

1	Hanoi Accommodations
2	Halong Cruise
3	Ninh Binh Accommodations

HANOI

THE GREAT STARTING
POINT FOR YOUR
VIETNAM EXPERIENCE





SOFITEL LEGEND METROPOLE

Number of Rooms

- Luxury Room (32m²)
- Grand Luxury Room (37m²)
- Metropole Suite (69m²)
- Graham Greene Suite (70m²)
- Charlie Chaplin Suite (70m²)
- Somerset Maugham Suite (70m²)
- Premium Room (32m²)
- Grand Premium Room (48m²)
- Prestige Suite (64m²)
- Grand Pesticte Suite (176m²)

Location

- Sofitel Legend Metropole is located in the heart of Hanoi, next to Hoan Kiem Lake

Ballroom

- Capacity of up to 120 people
- Ceiling height up to 3 meters





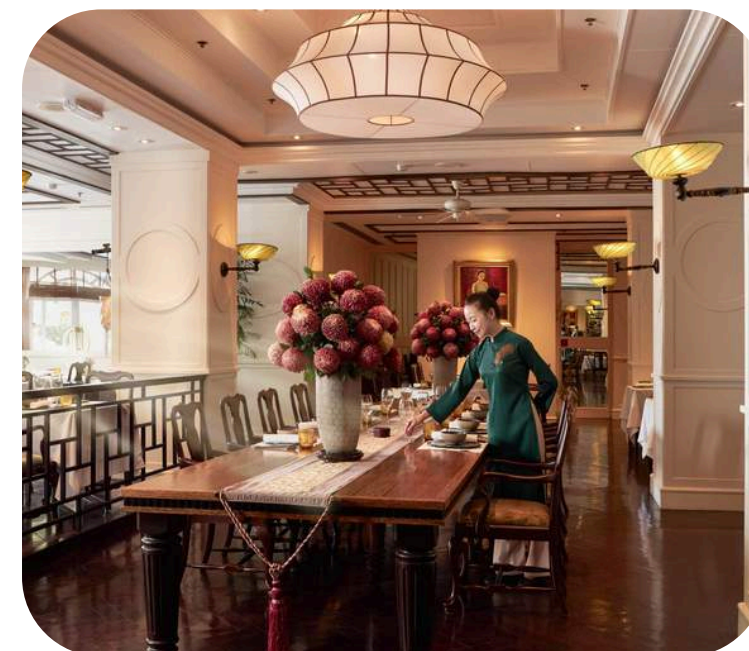
SOFITEL LEGEND METROPOLE RESTAURANTS & BARS

Restaurant & Bar

- Le Beaulieu : French cuisine
- Spice Garden: Vietnamese cuisine
- Le Club Bar: Brasserie-style Western and Asian menu
- La Terrasse: Al Fresco brasserie, French and Vietnamese cuisine

Bar & Lounge

- Bamboo Bar: French and Vietnamese cuisine
- Angelina: Cocktail bar and whisky lounge





CAPELLA HANOI

Number of Rooms

- 11 Premier Queen Room (35m²)
- 4 Premier Twin Room (41m²)
- 4 Junior Suites (59m²)
- 4 Premier Suites (69m²)
- 16 Deluxe Suites (71m²)
- 4 Capella Suites (83m²)
- 4 Opera Suites (194m²)

Location

- Capella Hanoi nestles on a peaceful boulevard along Hoan Kiem Lake right next to Sofitel Legend Metropole





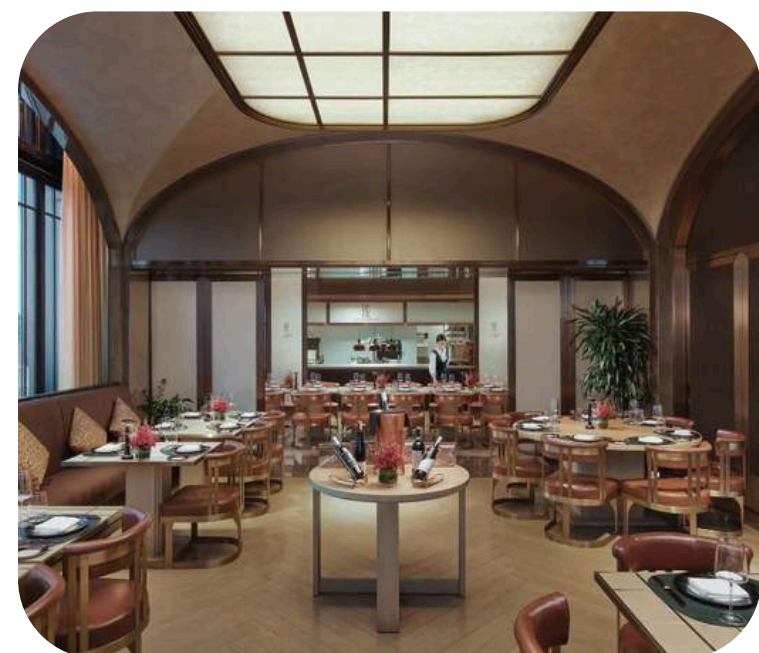
CAPELLA HANOI RESTAURANTS & BARS

Restaurant

- Backstage Restaurant: Vietnamese cuisine
- The Hudson Rooms: Vietnamese cuisine
- Koki Restaurant: Japanese cuisine

Bar & Lounge

- Divas's Lounge: Drinks and snacks





HOTEL DE L'OPERA HANOI

Number of Rooms

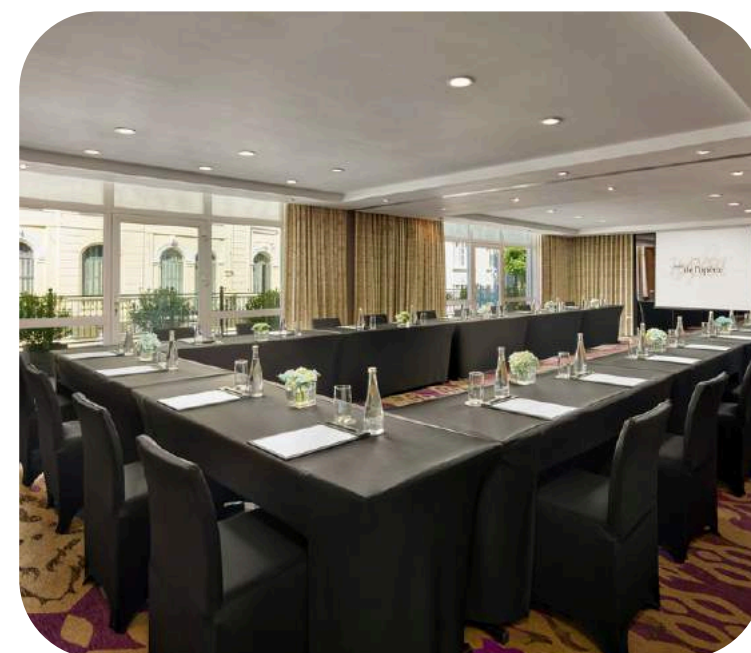
- 64 L'opera Deluxe Rooms (30-32m²)
- 21 L'opera Grand Deluxe Rooms (35 m²)
- 16 L'opera Suite (49-77m²)
- 6 L'opera Grand Suite (40-46 m²)

Location

- Located in the center of Hanoi, close to the Historic Opera House.
- 3 minutes walk from Hoan Kiem Lake and the Old Quarter.

Ballroom

- Capacity of up to 120 people
- Ceiling height up to 2.3 meters
- Provide the unique The Courtyard venue





HOTEL DE L'OPERA HANOI RESTAURANTS & BARS

Restaurant

- Café Lautrec: Western style dishes
- Satine: Vietnamese cuisine

Bar & Lounge

- La Fée Verte: French style bar





LOTTE HOTEL

Number of Rooms

318 Rooms & Suites Including:

- 9 King & 5 Twin Club Deluxe (42-44m²)
- 152 King, 61 Twin & 8 Family Deluxe (42-44m²)
- 42 King, 29 Twin & 2 Family Club Junior Suite (61-64 m²)
- 6 Deluxe Suite (99m²)
- 2 Premier Suites (147m²)
- 1 Presidential Suite (199m²)
- 1 Royal Suite (329m²)

Location

- In the center of Ba Dinh district Hanoi

Ballroom

- Capacity of up to 1000 people
- Ceiling height up to 6.5 meters





LOTTE HOTEL RESTAURANTS & BARS

Restaurant

- 7 restaurants & bars including:
- Grill63: Western and Vietnamese dishes
- Red River: Contemporary Chinese cuisine
- Tim Ho Wan: Hong Kong cuisine

Bar & Lounge

- Top of Hanoi: Brasserie & Bar with Open-air Live Kitchen
- Pharaoh's Bar & Upper: Contemporary Theme Bar
- The Lounge Sky: Lobby Lounge

Bakery

- Delica Hans: Bakery & Sidewalk Cafe





JW MARIOTT

Number of Rooms

450 guest rooms including:

- Guest Room City View: (48m²)
- Executive Lounge Access, Guest Room (48m²)
- Executive Lounge Access, Junior Suite (65m²)
- Executive Lounge Access, Executive Suite (90m²)
- Executive Lounge Access, Suite (90m²)
- Executive Lounge Access Lake View, Family Room (110m²)
- Grand Suite (150m²)
- Chairman Suite (250m²)
- Presidential Suite (320m²)

Location

- The hotel is located not too far nor too close to the center of Hanoi

Ballroom

- Capacity of up to 950 people





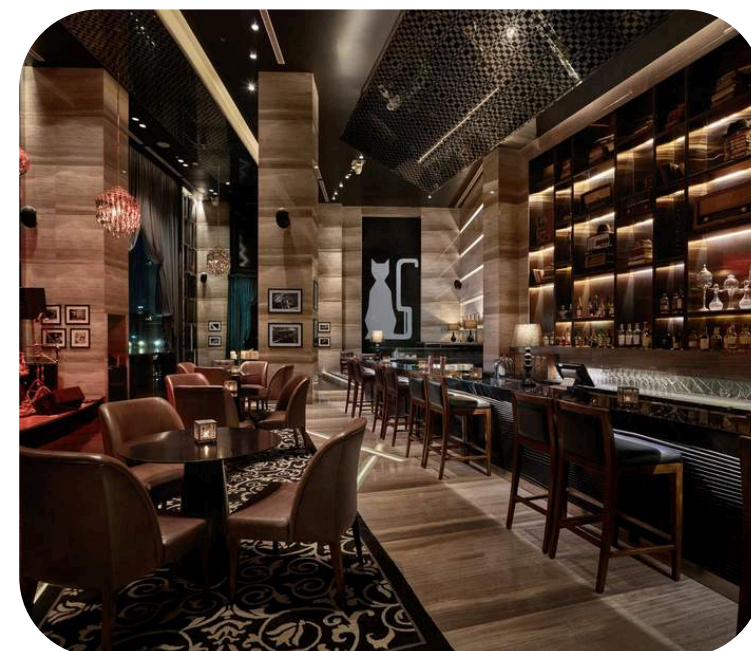
JW MARRIOTT HANOI RESTAURANTS & BARS

Restaurant & Bar

- Kumihimo: Modern Japanese Restaurant & Bar
- JW Lakeside Gardens: Multiple Cuisines
- JW Café: International Cuisine
- John Anthony Cantonese Grill & Dim Sum: Chinese Cuisine
- French Grill: French Cuisine

Bar & Lounge

- Cool Cats Jazz Club: International Cuisine
- The Lounge: International Cuisine
- Milk & Co: International Cuisine
- JW Patisserie: International Cuisine





PAN PACIFIC

Number of Rooms

- 181 Deluxe Room (35m²)
- 24 Premier Lakeview Room (35m²)
- 44 Pacific Club Room (35m²)
- 16 Studio Suite (40m²)
- 1 Premier Suite (50m²)
- 3 Executive Suite (65m²)
- 1 Presidential Suite (287m²)
- 54 Serviced Suite (60m²)

Location

- Strategically located at the edge of the city center within walking distance of downtown Hanoi

Ballroom

- Capacity of up to 450 people
- Ceiling height up to 5.6 meters





PAN PACIFIC RESTAURANTS & BARS

Restaurant

- Pacifica: International cuisine
- Ming: Authentic Cantonese cuisine

Bar & Lounge

- The Summit: Beverages
- Song Hong Bar: International cuisine

Bakery

- The Pastry Corner: Bread, and pastries





MELIÁ HANOI

Number of Rooms

306 Rooms & Suites including:

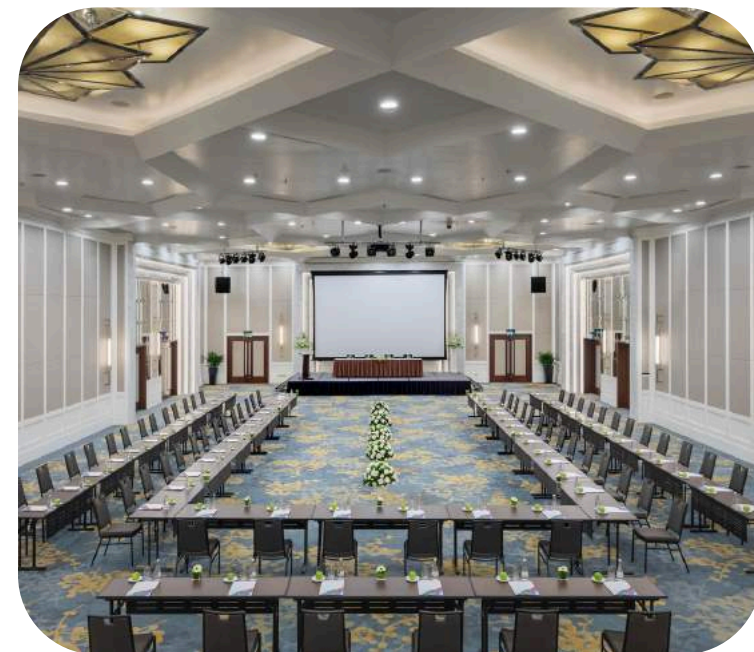
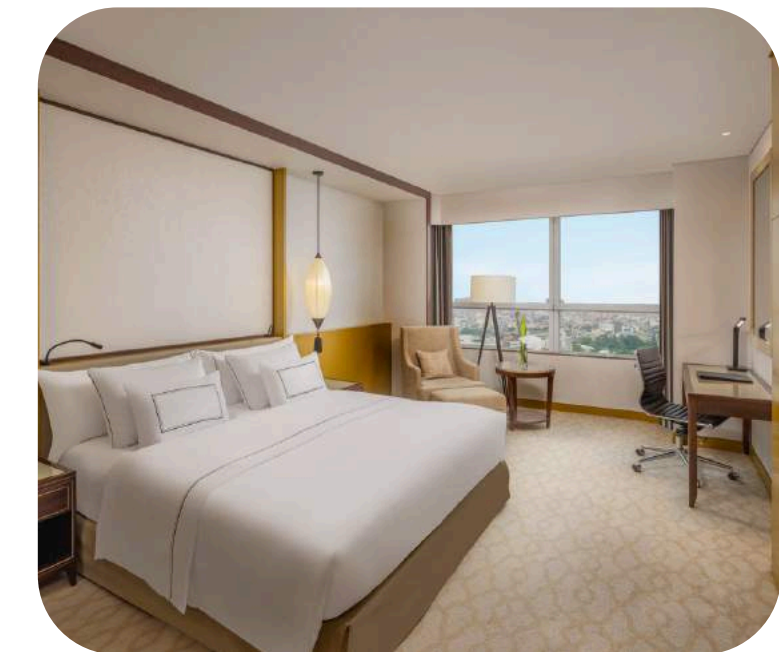
- Deluxe Room (32m²)
- Premium Room (32m²)
- Suite (68m²)
- Family Suite (68m²)
- Deluxe Connecting Room (64m²)
- The Level Premium Room (32m²)
- The Level Suite (68m²)
- The Level Suite with Balcony (68m²)

Location

- In the center of Hanoi and near Hoa Lo Prison

Ballroom

- Capacity of up to 1300 people
- Ceiling height up to 7 meters





MELIÁ HANOI RESTAURANTS & BARS

Restaurant & Bar

- Mosaico: International cuisine
- Cham Restaurant: Asian cuisine
- Garbo Bar: Beverages





PERIDOT GRAND LUXURY

Number of Rooms

- 7 Chic Deluxe (28m²)
- 27 Premier Deluxe (28-32m²)
- 45 Grand Deluxe (28-32m²)
- 11 Junior Suite (30m²)
- 6 Luxury Suite (54m²)
- 5 Grand Suite (54m²)
- 3 Grand Balcony Suite (54m²)

Location

- Being an oasis of tranquility in the hustle and bustle of Hanoi Old Quarter

Ballroom

- Capacity of up to 86 people

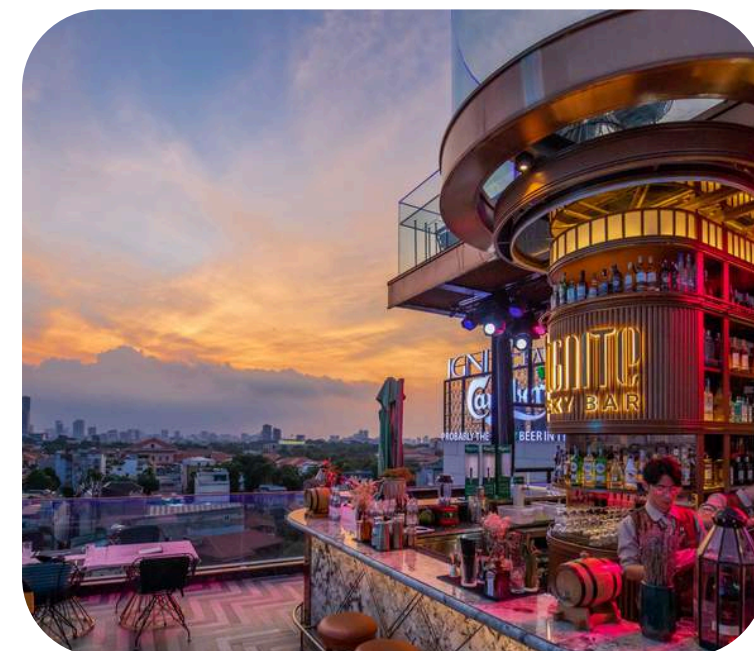




PERIDOT GRAND LUXURY RESTAURANTS & BARS

Restaurant & Bar

- 1968 Restaurant: All-day dining with Asia cuisine
- Olivine Restaurant: Fine dining Western cuisine & food performance
- Ignite Sky Bar: Signature cocktails and a diverse selection of tapas and Vietnamese specialties





INTERCONTINENTAL WESTLAKE

Number of Rooms

293 rooms including:

- Classic Rooms (43m²)
- Presidential Suite (305m²)
- Junior Suite (60m²)
- One Bedroom Suite (86m²)
- Two Bedroom Suite (129m²)
- Three Bedroom Overwater Pavilion Suite (137m²)

Location

- Located on the peaceful waters of the city's largest lake and adjacent to the famous 800-year-old Kim Lien Pagoda.

Ballroom

- Capacity of up to 450 people





INTERCONTINENTAL WESTLAKE RESTAURANT & BAR

Restaurant & Bar

- Milan Restaurant: Italian Cuisine
- Saigon Restaurant: Authentic Vietnamese Cuisine
- Sunset Bar: The place to be for cocktails
- Café Du Lac Restaurant: The contemporary French brasserie



HA LONG

THE BREATHTAKING
UNESCO WORLD
HERITAGE SITE





ESSENSE GRAND CRUISE

Number of Rooms

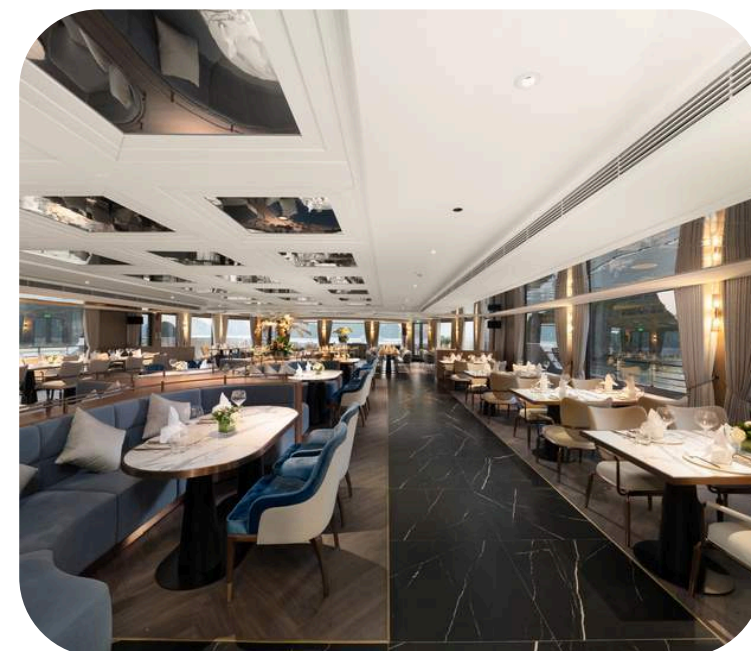
- 2 Ocean Suite (30m²)
- 4 Ocean Suite - TPL (43m²)
- 12 Ocean Balcony Suite (40m² + 5m² balcony)
- 14 Veranda Suite (40m² + 5m² balcony)
- 18 Executive Suite (40m² + 5m² balcony)
- 2 Essence Suite (60m² + 20m² balcony)
- 1 Oceania Suite (95m²)
- 1 Owner Suite (150m² + 200m² sundeck)

Location

- Overnight cruise on Ha Long Bay

Ballroom

- VIP dining room combined with a private meeting room, accommodating up to 30 guests

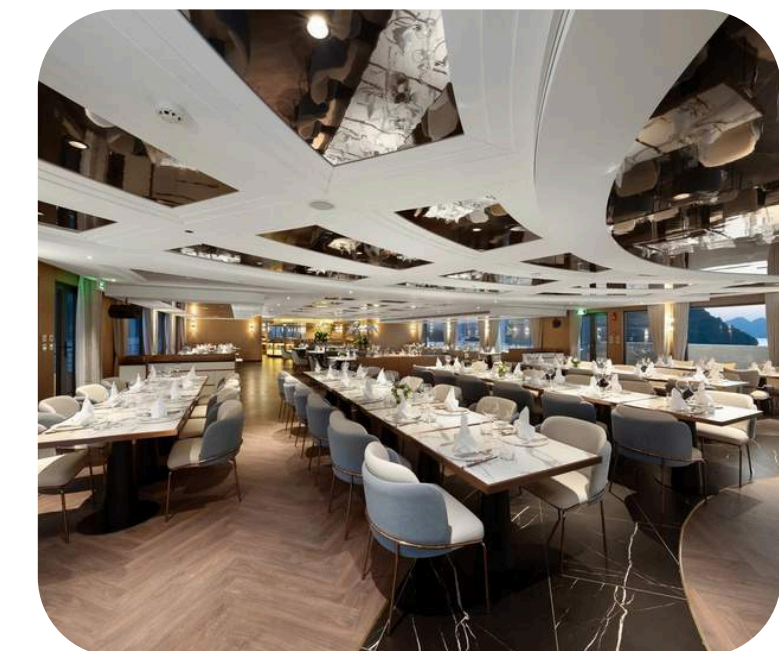




ESSENCE GRAND CRUISE RESTAURANT & BAR

Restaurant & Bar

- Dining By The Bay Restaurant: Asian and European cuisine
- Stellar Sky Bar: Cocktails, wines, and other exquisite beverages





PARADISE ELEGANCE

Number of Rooms

- 14 Deluxe Balcony (25m2)
- 13 Executive Balcony (25m2)
- 2 Elegance Balcony Suite (35m2)
- 2 Captain's View Terrace Suites (35m2)

Location

- Overnight cruise on Ha Long Bay

Ballroom

- Sundeck can accommodate up to 90 people

Restaurant & Bar

- La Marin restaurant serves Asian and Western menus suitable for tourists





PARADISE GRAND

Number of Rooms

- 18 Grand Balcony (28m²)
- 17 Executive Grand Balcony (28m²)
- 2 Grand Balcony Suites (35m²)
- 2 Captain's View Grand Suites (35m²)

Location

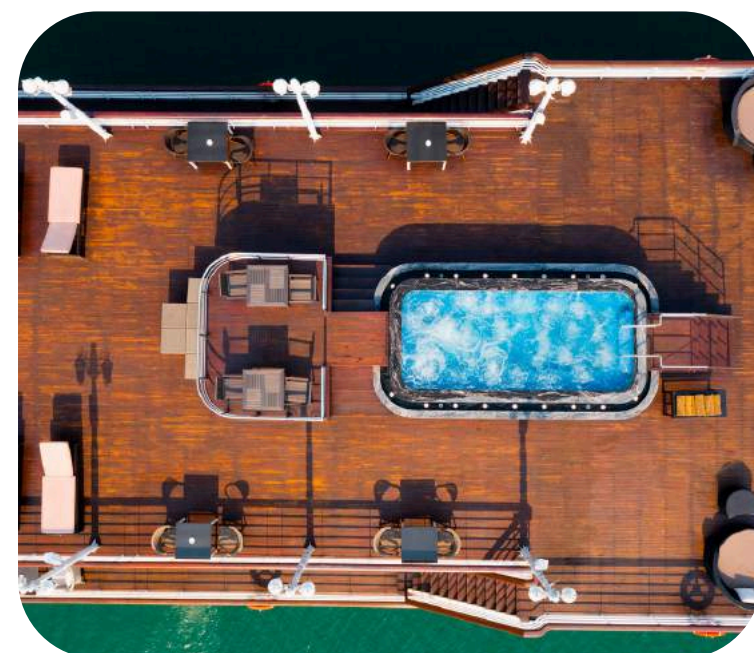
- Overnight cruise on Lan Ha Bay

Ballroom

- Large sundeck space of up to 450m² and capacity of up to 120 people

Restaurant & Bar

- La Espacia restaurant serves Asian and Western menus suitable for tourists





CAPELLA CRUISE

Number of Rooms

- 11 Oasis Suite (32m²)
- 5 Harmony Suite (32m²)
- 1 Harmony Family Suite (48m²)
- 2 La Suite De Capella (57m²)
- 7 Sky Suite (32m²)
- 1 Sky Family Suite (43m²)
- 2 Sky Terrace Suite (45m²)
- 1 The Owner Suite (92m²)
- 6 Connecting Room

Location

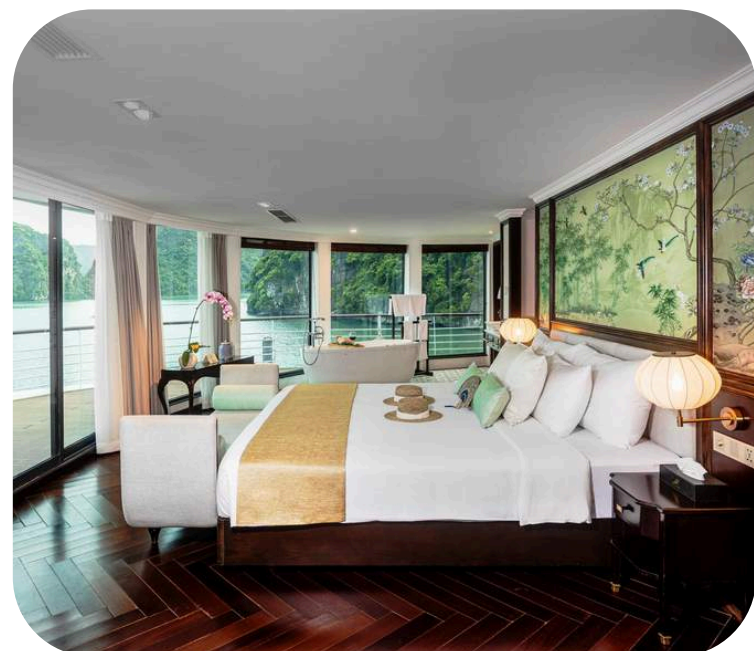
- Overnight cruise on Lan Ha Bay

Ballroom

- Can arrange up to 70 people for meetings and conferences

Restaurant & Bar

- Harmony of The Sea restaurant serving 4 meals daily
- Spirit Of The Sea Lounge serving drinks by the pool





CAPELLA CRUISE RESTAURANT & BAR

Restaurant & Bar

- Harmony of The Sea Restaurant serving 4 meals daily
- Spirit Of The Sea Lounge serving drinks by the pool





LA REGINA ROYAL

Number of Rooms

- 12 Noble Suite (26m²)
- 6 Imperial Suite (26m²)
- 2 Grand Royal Suite (35m²)

Location

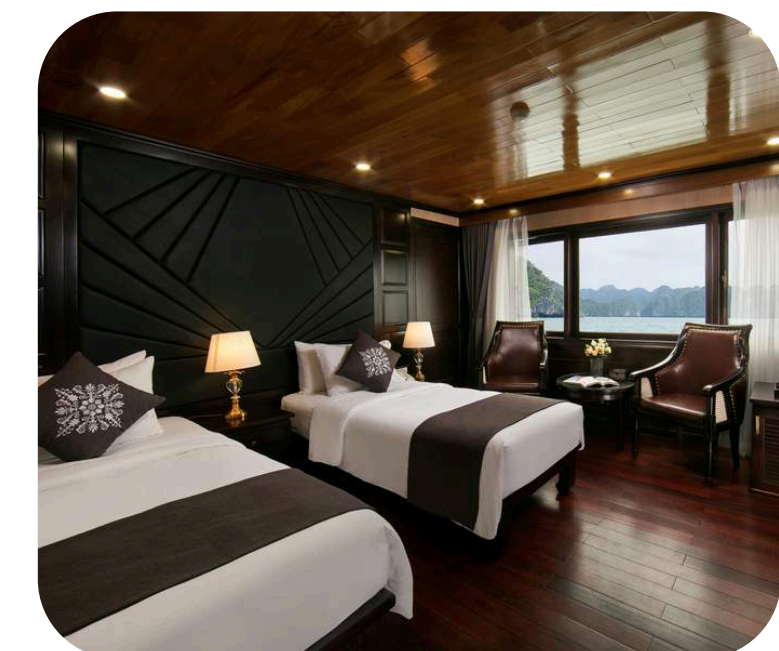
- Overnight cruise on Lan Ha Bay

Ballroom

- Can arrange up to 60 people in the restaurant

Restaurant & Bar

- The Grace restaurants and bar serve a wide range of foods and drinks with a beautiful view of the bay





LA REGINA LEGEND

Number of Rooms

- 22 Princess Suite (45m²)
- 4 Queen Triple Suite (54m²)
- 1 Queen Regent Suite (VIP Suite) (135m²)

Location

- Overnight cruise on Halong

Ballroom

- Can arrange up to 100 people in the restaurant

Restaurant & Bar

- The Grace restaurants and bar serve wide range of foods and drinks with beautiful view of the bay





LA REGINA GRAND

Number of Rooms

- 12 Bai Tu Long Suite (45m2)
- 5 Halong Suite (45m2)
- 5 Lan Ha Suite (45m2)
- 1 Lan Ha Trio Suite (54m2)
- 2 Lan Ha Junior Suite (60m2)
- 1 Lan Ha Duplex Suite (90m2)
- 1 Lan Ha Grand Suite (135m2)

Location

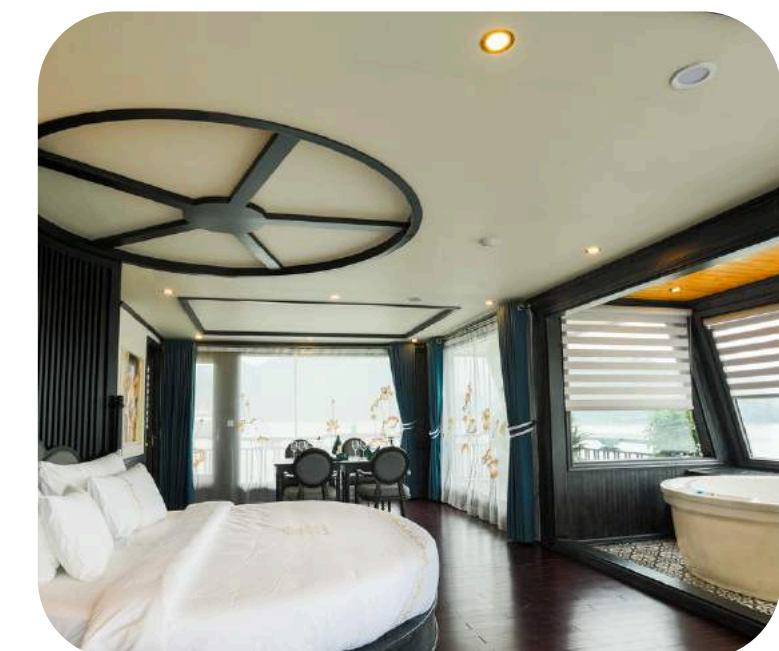
- Overnight cruise on Halong

Ballroom

- Can arrange up to 90 people in the restaurant

Restaurant & Bar

- Ha Long Bar and Restaurant: Fusion Cuisines
- Cat Ba Oasis Lounge and Restaurant: Fusion Cuisines





LA REGINA GRAND RESTAURANT & BAR

Restaurant & Bar

- Ha Long Bar and Restaurant: Fusion Cuisines
- Cat Ba Oasis Lounge and Restaurant: Fusion Cuisines





CATHERINE CRUISE

Number of Rooms

- Premier Suite (40m²)
- Royal Suite (56m²)
- Grand Suite (85m²)
- Villa President (200m²)

Location

- Overnight cruise on Ha Long Bay

Ballroom

- Catherine can accommodate up to 117 guests

Restaurant & Bar

- 02 Restaurants on the 2nd floor & the 4th floor. Locally sourced and regionally inspired cuisine.
- Rooftop Bar: a modern LED lighting system and monumental stage will bring colorful sophisticated music parties.





CATHERINE CRUISE RESTAURANT & BAR

Restaurant & Bar

- 02 Restaurants on the 2nd floor & the 4th floor. Locally sourced and regionally inspired cuisine.
- Rooftop Bar: a modern LED lighting system and monumental stage will bring colorful sophisticated music parties.





ELITE OF THE SEA

Number of Rooms

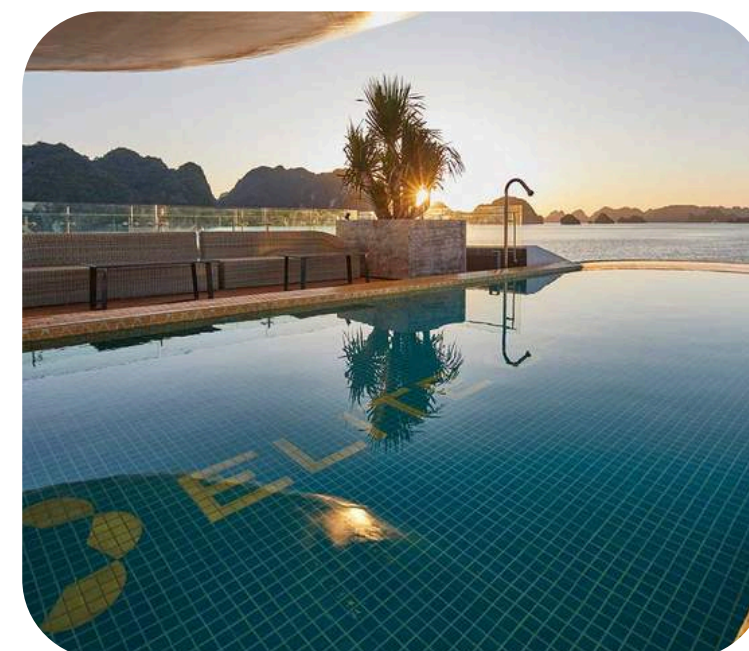
- Elite Junior Suite (28m2)
- Elite Junior Premium Suite (43m2)
- Elite Senior Suite (26m2)
- Elite Senior Premium Suite (35m2)
- Elite Executive Suite (45m2)
- Elite Executive Premium Suite (58m2)
- Elite President Suite (88m2)

Location

- Cruise on Halong – Lan Ha Bay

Ballroom

- Capacity of up to 99 people





ELITE OF THE SEA RESTAURANT & BAR

Restaurant & Bar

- Fine Dining Room: Offer Western food, famous Vietnamese traditional food served in BBQ, buffet, and a la carte.
- Panoramic Bar: a wide selection of international wines, cocktails, non-alcoholic beverages, coffee
- Wine & Cigars Cellar: wines and famous cigars





STELLAR OF THE SEAS

Number of Rooms

- Junior Suites (28m²)
- Senior Suites (30m²)
- Executive Suites (32m²)
- President Suite (60m²)

Location

- Overnight cruise on Ha Long Bay

Ballroom

- Capacity of up to 62 people





STELLAR OF THE SEAS RESTAURANT & BAR

Restaurant & Bar

- The fine dining room: local light breakfast, set menu lunch, and BBQ dinner in the swimming pool side.
- Panoramic bar: the luxury bar is fully stocked with fine wines, spirits, alcoholic and non-alcoholic drinks



NINH BINH

THE BREATHTAKING
UNESCO WORLD
HERITAGE SITE





EMERALDA NINH BINH

Number of Rooms

- 116 Superior Room (50m²)
- 36 Deluxe Room (77m²)
- 20 Duplex Room (107m²)

Location

- Located on the edge of Van Long Nature Reserve, a primeval tropical forest in Ninh Binh

Ballroom

- Can arrange up to 450 people





EMERALDA NINH BINH RESTAURANT & BAR

Restaurant & Bar

- Sen Restaurant: Vietnamese Cuisine
- Organic Restaurant: Asian and Western Cuisine





EMERALDA TAM COC

Number of Rooms

- Superior Room (36m²)
- Deluxe Room (50m²)
- Premium Deluxe Room (66m²)
- Imperial Room (88m²)

Location

- Set in Village Van Lam, Ninh Hai Commune, Hoa Lu District, Ninh Binh, 24 km from Bai Dinh Temple...

Ballroom

- Can arrange up to 100 people in the restaurant





EMERALDA TAM COC RESTAURANT & BAR

Restaurant & Bar

- Com Restaurant: From Asian to Western dishes
- Jade Bar: Snacks and Drinks





T H A N K Y O U

Head Office: VINARE Building, Le Duan St., Hoan Kiem, Hanoi, Vietnam

T: +84 24 3747 2597 | www.auroratravel.asia | mice@auroratravel.asia