



CAMBODIA HOTELS

SIEM REAP

THE BLEND OF
ANCIENT HISTORY,
RICH CULTURE, AND
BUSTLING MARKETS





SOFITEL ANGKOR

Number of Rooms

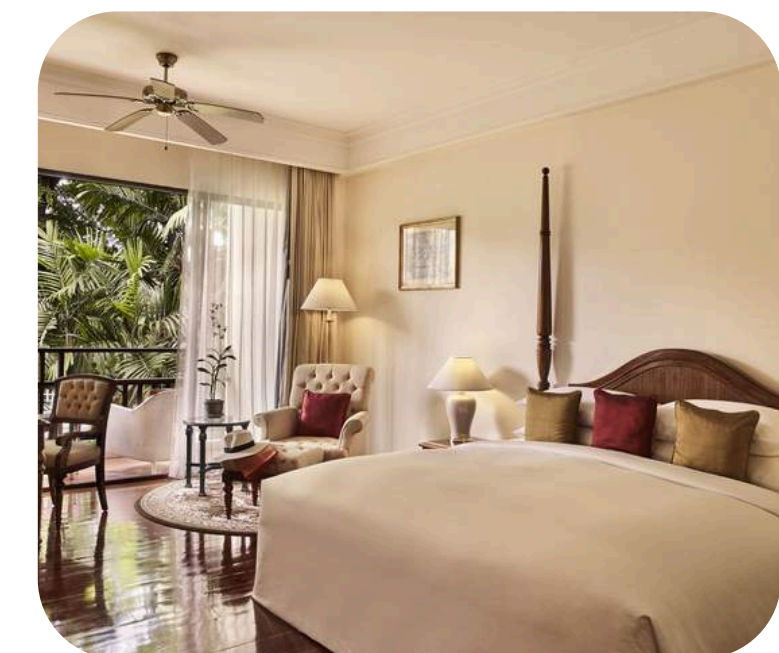
- 136 Superior (Twin, King, Triple) (36m²)
- 88 Luxury (Twin, King, Triple) (46m²)
- 6 Junior Suite (Twin, King) (70m²)
- 8 Prestige Suite (Twin, King) (90m²)
- 1 Opera Suite (1 King & 1 Twin) (140m²)

Location

- Near Angkor Heritage Site, Tonle Sap, Landmine Museum
- Under 5 minutes walk to a convenience store and ATM

Ballroom

- Capacity of up to 400 people
- Ceiling height up to 7.2 meters





SOFITEL ANGKOR RESTAURANT & BAR

Restaurant

- The Citadel: contemporary Western and Asian cuisines
- Mouhot's Dream: French cuisine
- Royal Court Terrace: Cambodian-style buffet
- Chef's Table: French Gastronomy
- Explorer's Tales: A diverse range of beverages, including afternoon tea and cocktails, accompanied by live piano music.

Bar & Lounge

- Serpent Bar (Poolside): offers drinks and snacks all day. Enjoy tropical cocktails, imported beers, and local favorites.
- The Sanctuary (Wine room): Enjoy signature drinks and a wide wine selection
- Club Millesime: Breakfast, afternoon tea, Apéro Chic.





ANANTARA ANGKOR RESORT

Number of Rooms

- Suite (6 King, 3 Twin) (46m²)
- Premier Suite (4 King, 4 Twin) (51m²)
- Terrace Suite (6 King, 2 Twin) (54m²)
- Premier Terrace Suite (4 King, 4 Twin) (58m²)
- Anantara Suite (2 King) (78m²)
- Sothea Suite (2 King) (112m²)
- Anantara Explorer Suite (1 King) (178m²)
- Henri Mouhot Two Bedroom Suite (2 King) (253m²)
- Family Suite (1 King, 1 Twin) (163m²)
- Family Pool Suite (2 King) (253m²)

Location

- Located in the quaint town of Siem Reap in north-western Cambodia, a 15-minute drive from the glorious Angkor Wat

Ballroom

- Capacity of up to 90 people
- Ceiling height up to 7 meters

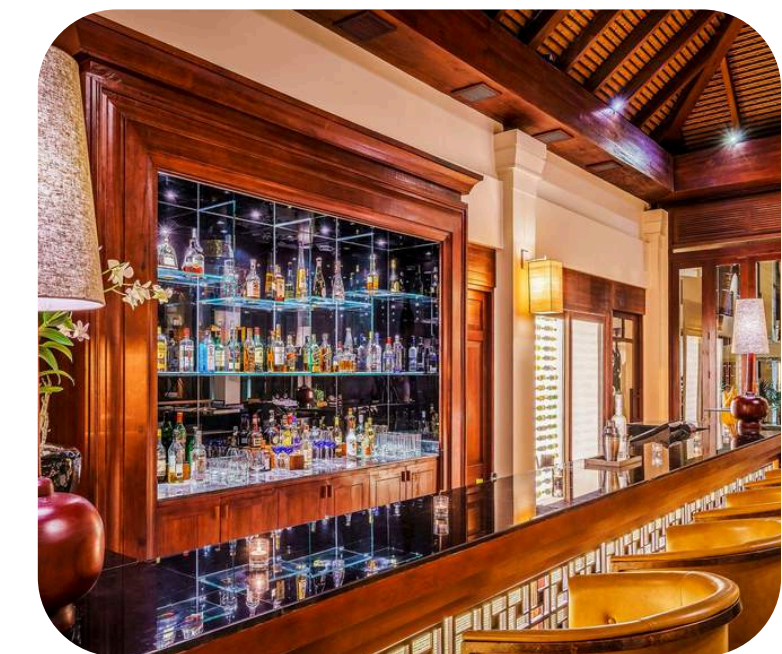




ANANTARA ANGKOR RESORT RESTAURANT & BAR

Restaurant & Bar

- Chi Restaurant & Bar: Khmer cuisine
- L Lounge: offers Western favourites and pan-Asian comfort food





BOREI ANGKOR RESORT

Number of Rooms

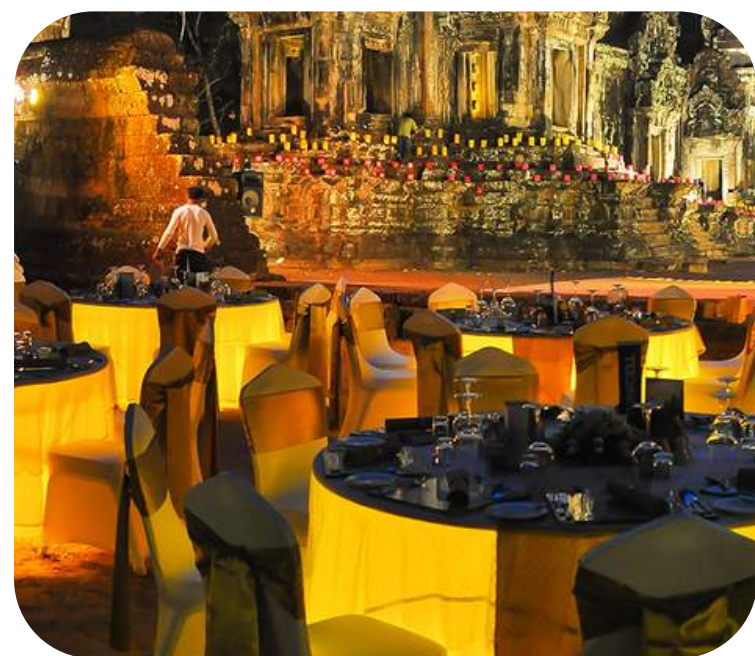
- Deluxe (28 double, 18 twin) (40m²)
- Landmark (65 double, 46 twin, 7 triple) (47m²)
- Junior Suite (50m²)
- Club Suite (65m²)
- Borei Suite (65m²)
- Royal Suite (188m²)

Location

- National Road 6, Banteay Chas, Siem Reap, Cambodia
- Borei Angkor Resort & Spa is ideally situated within 9 km from Siem Reap Airport, 7.8 km from Angkor Wat, and approximately within 5-minute drive to the major attractions in towns.

Ballroom

- Ceiling height up to 3.8 meters





BOREI ANGKOR RESORT RESTAURANT & BAR

Restaurant & Bar

- Bakan Restaurant: Khmer & Western Cuisine
- Ox Club Restaurant: Contemporary European Cuisine
- Meada Restaurant: Authentic Khmer Cuisine
- Rosil Pool Bar
- Borei Cafe





ANGKOR PALACE HOTEL

Number of Rooms

- 72 Deluxe Room (42m²)
- 142 Premier Deluxe Room (42m²)
- 32 Palace Club Room (42m²)
- 16 Two-Bedroom Family Deluxe - Connecting (84m²)
- 7 One-Bedroom Suites (84m²)
- 6 Studio Villa (80-100m²)
- 1 One-Bedroom Villa, Private Pool (120m²)
- 1 Two-Bedroom Villa, Private Pool (220m²)
- 1 Three-Bedroom Villa, Private Pool (320m²)

Location

- Located at Phum Kruos, Sangkat Svay Dangkum, Siem Reap, Kingdom of Cambodia.

Ballroom

- Capacity of up to 200 people





ANGKOR PALACE HOTEL RESTAURANT & BAR

Restaurant

- Soriya Restaurant: Khmer & International A La Carte and Set Menu
- Sunset Café Restaurant: International Buffet Menu
- Phum Kreuz Khmer: Royal Khmer Cuisine

Bar & Lounge

- Club Lounge: mini-buffet of snacks and a selection of beverage
- Lobby Bar: Mocktails, Cocktails, Champagne and Wine





FCC ANGKOR BY AVANI

Number of Rooms

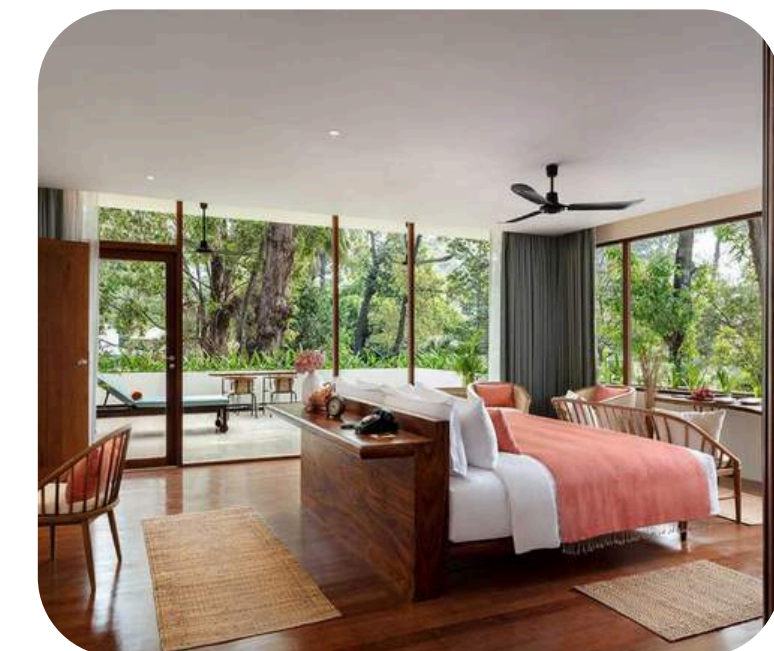
- Deluxe Room (33m²)
- Deluxe Courtyard Room (33m²)
- Premier Room (38m²)
- Premier Triple Room (38m²)
- Governor Suite (66m²)
- Garden Suite (66m²)
- Family Suite (93m²)
- River View Suite (149m²)

Location

- Located in the heart of Siem Reap, FCC Angkor by Avani is a 10-minute drive from Angkor Wat and steps away from Royal Independence Gardens and Royal Residence

Ballroom

- Capacity of up to 100 people





FCC ANGKOR BY AVANI RESTAURANT & BARS

Restaurant & Bar

- SCRIBE Restaurant: Khmer cuisine, Drinks, Light bites
- The Mansion: Khmer, Asian, International cuisine
- The Khmer Royal Ballet's Culinary Experience: Cambodia, Asian cuisine





PHNOM PENH

IMMERSE YOURSELF IN
THE LIVELY ATMOSPHERE
OF BUSTLING MARKETS,
SAVOR THE DELICIOUS
KHMER CUISINE



RAFFLES HOTEL LE ROYAL

Number of Rooms

175 Rooms & Suites including:

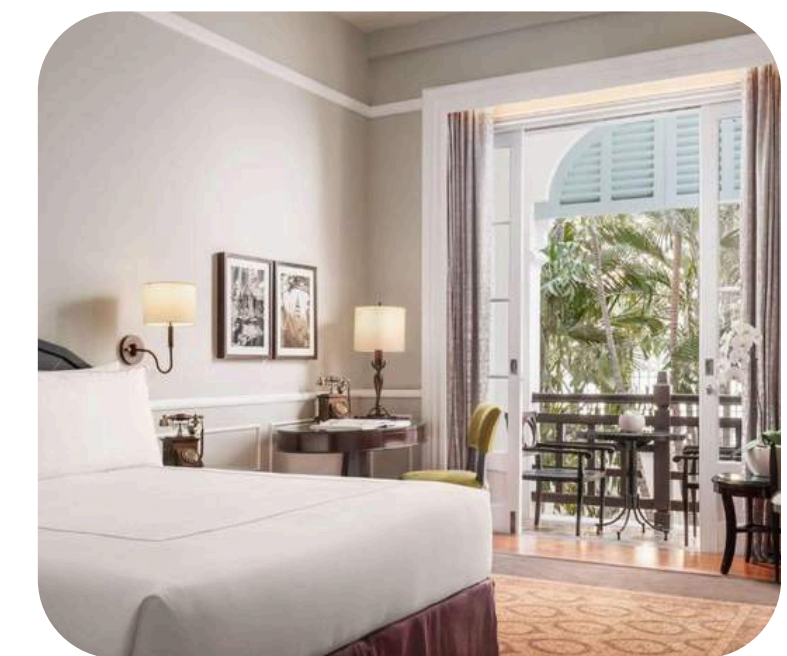
- State Room King Bed/ Pool View (33m²)
- State Room Twin Beds/ Pool View (33m²)
- Landmark Room King Bed/ Pool View (34m²)
- Landmark Room Twin Beds/ Pool View (34m²)
- Landmark Suite (140m²)
- Le Royal Suite (223m²)

Location

- It's a short walk to Wat Phnom, and 10 minutes to the riverfront, with the National Museum, Royal Palace, and the Russian Market all a short tuk-tuk ride away. Phnom Penh International Airport is a 45-minute drive.

Ballroom

- Capacity of up to 400 people





RAFFLES HOTEL LE ROYAL RESTAURANT & BAR

Restaurant

- Restaurant Le Royal: Traditional Cambodian royal family recipes, and modern Khmer gastronomy
- Le Phnom 1929: French-style brasserie

Bar & Lounge

- Elephant Bar: Signature cocktails such as Femme Fatale
- Pool Terrace: Chilled wines, beers, and tropical cocktails served with tapas and light meals





SOFITEL PHNOM PENH PHOKEETHRA

Number of Rooms

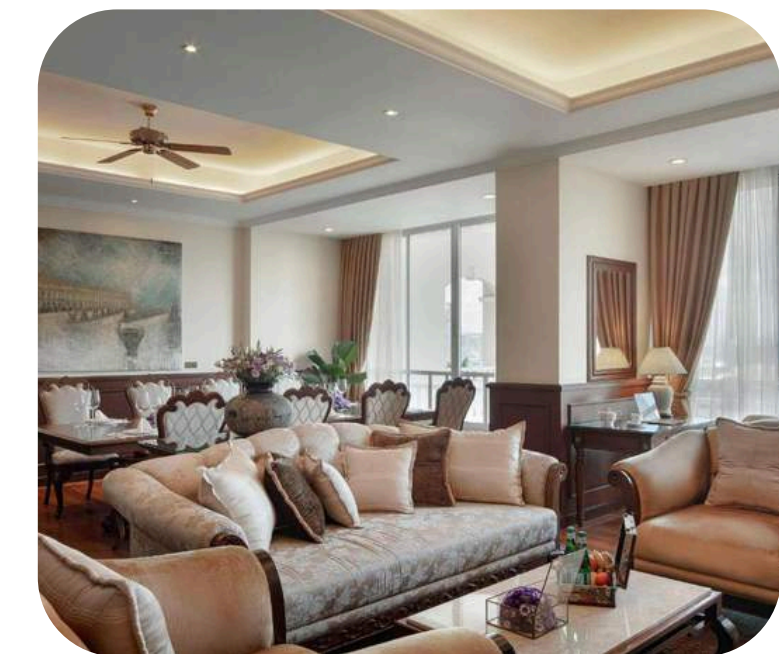
- Superior Room (40m²)
- Luxury Room (47m²)
- Junior Family Suite (53m²)
- Superior Club Room (40m²)
- Luxury Club Room (47m²)

Location

- Sofitel Phnom Penh Phokeethra is situated amongst the landscaped gardens in the city's old quarters. The stunning 12 story colonial style hotel is conveniently located along the riverside, and close to major tourist attractions

Ballroom

- Capacity of up to 2000 people
- Ceiling height 9m





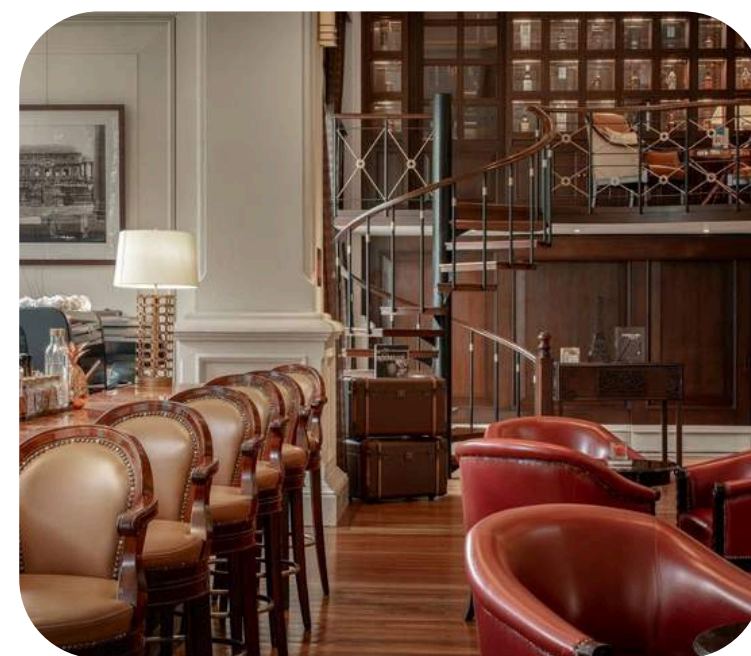
SOFITEL PHNOM PENH PHOKEETHRA RESTAURANT & BAR

Restaurant

- Do Forni: Offers authentic Italian cuisines
- Fu Lu Zu: Offers unique Chinese and Seafood
- Hachi: Japanese menu with Sidhi, Sashimi, and Don

Bar & Lounge

- Le Bar: Cocktails Served with the charming riverfront view
- Club Millésime: Exclusively offered to Club and Suite guests with special services
- Phokeethra Sports Bar: Offers healthy meals and refreshing beverages
- Champagne Boutique: Offers popular champagne of France
- Cigar Chamber: Exclusive and intimate space to enjoy premium Cuban cigars





BAITONG HOTEL & RESORT

Number of Rooms

106 rooms and suites including:

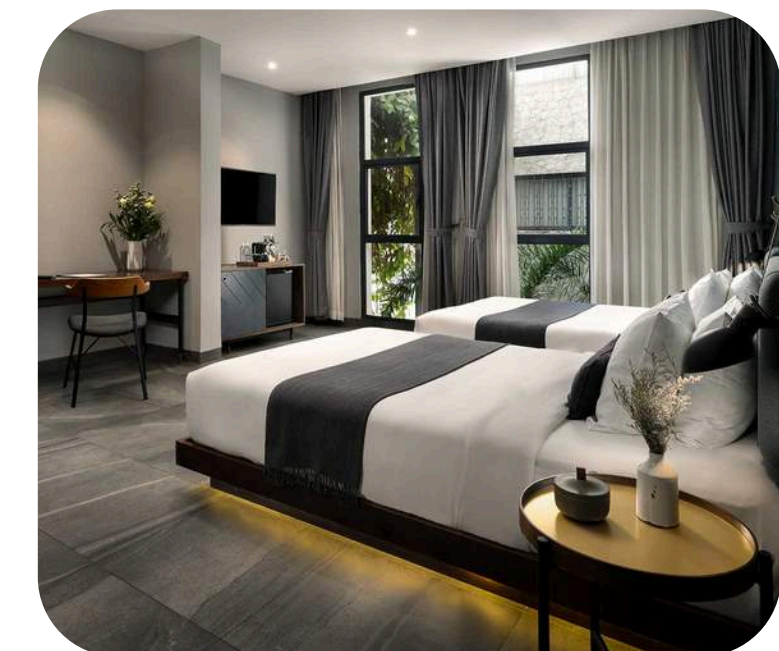
- Standard Room (28m²)
- Deluxe Pool View/ Plunge Pool/ City View (37m²/ 42m²/ 44m²)
- Superior City View/ Pool View/ Garden Terrace/ Plunge Pool (34m²/ 36m²/ 37m²)
- Suite Room (54m²)

Location

- Baitong is located in the center of Phnom Penh and near most of the popular attractions

Ballroom

- Conference Room can be set up for up to 60 people

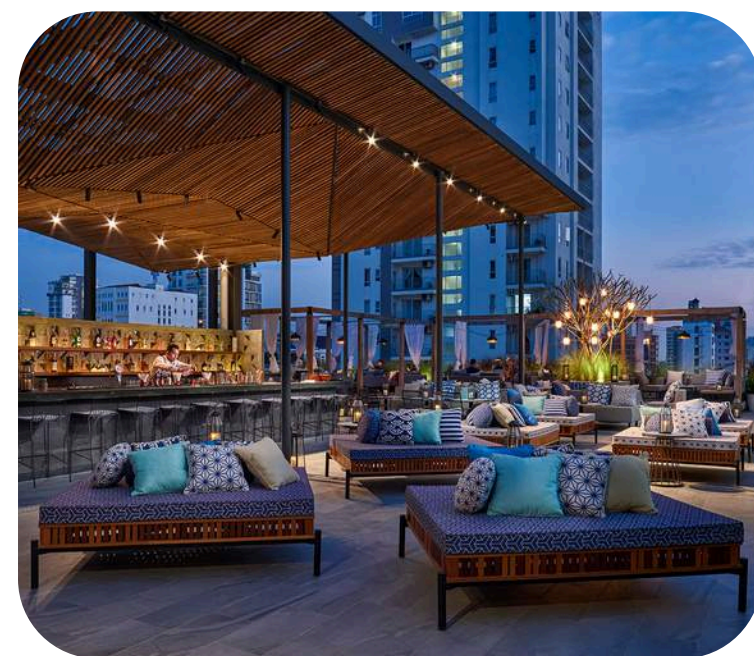




BAITONG HOTEL & RESORT RESTAURANT & BAR

Restaurant & Bar

- Kuang Seafood Restaurant: Serves seafood and can be set up for business dinner
- Lantern Rooftop Bar: A chic rooftop bar, ideal for fashion shows, special celebrations, and themed parties





PALACE GATE HOTEL & RESORT

Number of Rooms

- Apsara Deluxe Double (32m²)
- Royal Deluxe Double (35m²)
- Royal Deluxe Double/ Twin (35m²/ 45m²)
- Royal Deluxe Double/ Twin View (45m²)
- Royal Suite Double/ Twin Balcony (45m²)
- Royal Suite Double/ Twin Balcony Pool View (45m²)
- Apsara Suite (43m²)
- Majesty Suite (55m²)
- Palace Suite (95m²)

Location

- Only 11.5km from Phnom Penh International Airport, and within a short walking distance of the Riverside area of Sisowath Quay

Ballroom

- Lobby Meeting Room can be set up for up to 40 people

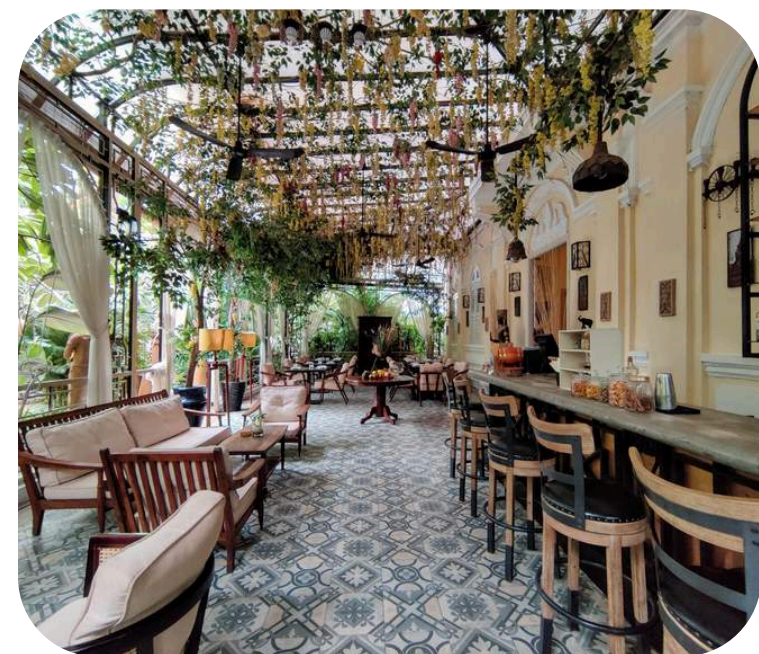
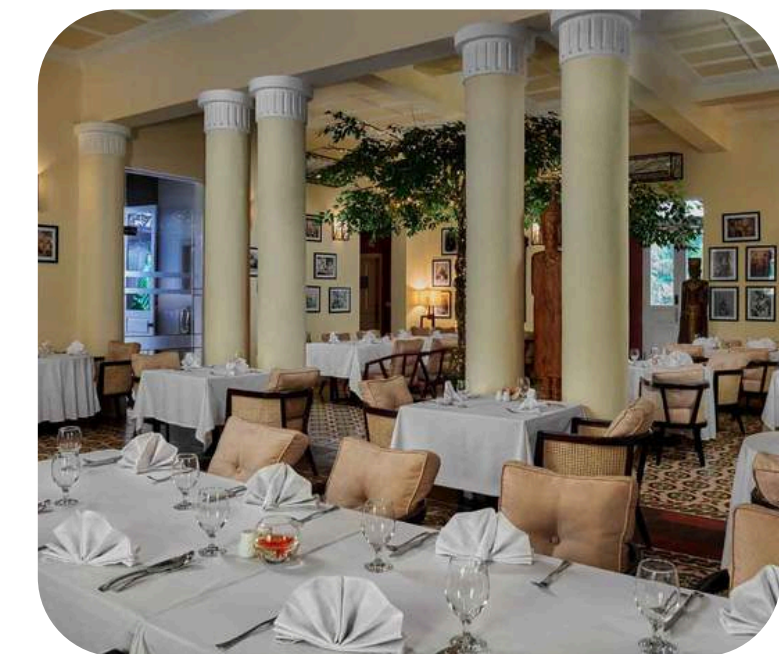




PALACE GATE HOTEL & RESORT RESTAURANT & BAR

Restaurant & Bar

- Mealea Restaurant: Offers fusion cuisine
- Organic Skybar: Offers cocktails and tapas
- Orchid Bar: Offers refreshment and relaxation
- Pool Bar: Offers chilled wines, beers, cocktails, tropical fresh juices, and light meals



KOH RONG

LUXURIOUS PRIVATE
ISLAND RESORT OFFERS
AN IDYLIC RETREAT
SURROUNDED BY
TURQUOISE WATERS





SONG SAA PRIVATE ISLAND

Number of Rooms

- Jungle Villas One/ Two Bedroom (135m2/ 300m2)
- Overwater One/ Two Bedroom Villas (135m2/ 300m2)
- Royal Villa (300m2)

Location

- Song Saa Private Island lies secluded in this magnificent seascape, just 29 km or 45 minutes by speedboat from the port of Sihanoukville Archipelago

Ballroom

- Weddings and Events, Executive Retreats, and Family Reunions accommodating 30 – 70 persons depending on sharing options





SONG SAA PRIVATE ISLAND RESTAURANT & BAR

Restaurant & Bar

· Driftwood Bar & Kitchen: Offers pizza and tapas-style menus, as well as cold beer, chilled wines, or one of our signature cocktails





T H A N K Y O U

Head Office: VINARE Building, Le Duan St., Hoan Kiem, Hanoi, Vietnam

T: +84 24 3747 2597 | www.auroratravel.asia | mice@auroratravel.asia